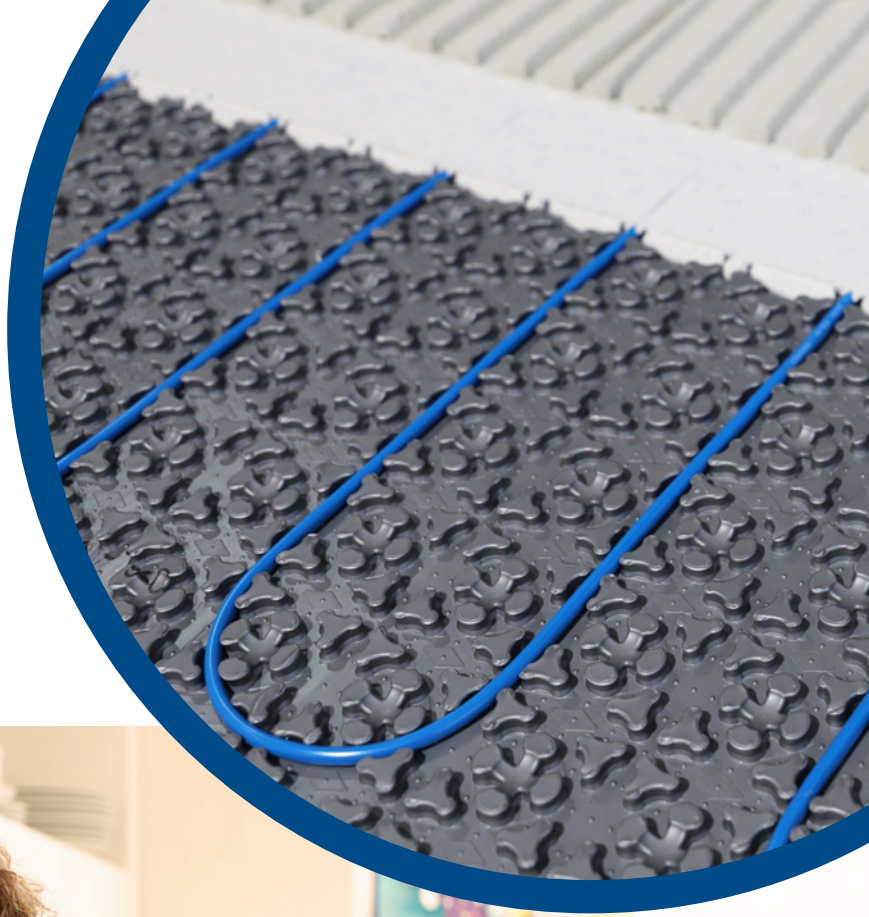


# ARDEX FLEXBONE<sup>®</sup> HEAT

IN-FLOOR HEATING SYSTEMS



Innovative Design for  
Maximum Comfort  
and Energy Efficiency



tile & stone  
Installation Systems

724-203-5000 • [www.ardexamericas.com](http://www.ardexamericas.com)



# ARDEX FLEXBONE<sup>®</sup> HEAT

## IN-FLOOR HEATING SYSTEMS

Warmth, comfort AND outstanding energy efficiency in any room!

**Three convenient thermostat options** for the FLEXBONE HEAT System, to ensure you can find the right fit for you; Wi-Fi Enabled (shown), Touch Programmable and Basic.

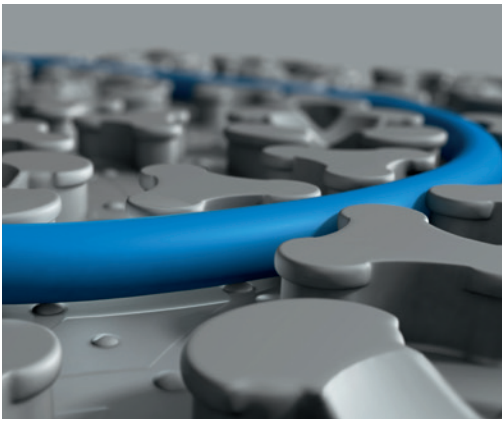
**Smart Phone Control App** for real time control from anywhere! Monitor and adjust heating to lower energy usage.

The uniquely designed ARDEX FLEXBONE® HEAT Membrane is a **3 in 1 solution**: for **heating, uncoupling and waterproofing**.

## ARDEX FLEXBONE® HEAT

The most comprehensive, single-source, in-floor radiant heat system available. With precision German engineering and inspired design, **ARDEX FLEXBONE® HEAT** delivers customizable heat faster and more efficiently than any other system, **using up to 11% less energy!**

**ARDEX FLEXBONE® HEAT** is ideal for all types of tile, stone and other manufacturer-approved floor coverings, and the 10-Year complete system warranty leaves you feeling more comfortable.



## ARDEX FLEXBONE® HEAT Membrane

The uniquely designed ARDEX FLEXBONE® HEAT Membrane is a **3 in 1** solution: for heating, uncoupling and waterproofing.

### Thoughtful engineering for greater heat efficiency:

- Up to 81% less air space under the membrane allows for faster and more efficient heating
- Holds cable securely, with less membrane contact for increased heat efficiency

### Designed for ease of installation:

- Pre-fill in **JUST ONE PASS!**
- Little to no memory, rolls out flat every time



## ARDEX FLEXBONE® Heating Cables

The FLEXBONE® Heating Cables are manufactured to the highest safety and quality standards. Engineered with aluminum tubing and FEP cable insulation, FLEXBONE® Heating Cables produce maximum heat spread using minimal wattage. There are 34 cable lengths available and all share the same diameter, for a reliably secure fit every time!

- Cold/Hot junction self-contained within the cable; no bulky connection to cut and bury
- Two (2) provided Floor Sensors (one with heat cable / one with thermostat)
- Available in both 120V and 240V
- Less heating cable required per sq. ft.



## ARDEX FLEXBONE® HEAT Thermostats

There are three convenient options for the FLEXBONE HEAT System to ensure you can find the right fit for you, the Wi-Fi enabled (shown), Touch Programmable and Basic models.

- **Wi-Fi Enabled:**
  - Smart Phone Control App for real time control from anywhere
  - Monitor and adjust heating while not at home to save energy
- Floor sensors included with all models
- FLEXBONE® HEAT Power Module - connects two cables to one thermostat

# ARDEX FLEXBONE® HEAT IN-FLOOR HEATING SYSTEMS

The Most Comprehensive, Single-Source System Solutions

# LEAVING THE COMPETITION OUT IN THE COLD

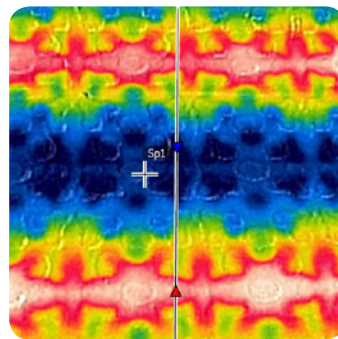
TEMPERATURE ON SURFACE OF TILE		
	Start	AFTER 30 MINUTES
<b>ARDEX FLEXBONE® HEAT</b>	<b>65°F (18.4°C)</b>	<b>79.5°F (26.4°C)</b>
Leading Competitor	65°F (18.4°C)	77.9°F (25.5°C)

The FLEXBONE® HEAT floor also stays warmer longer after the system is turned off. After turning the system off, **30 minutes later the FLEXBONE® HEAT floor is 2 DEGREES WARMER!**

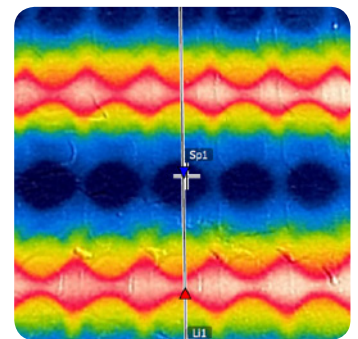


## MORE HEAT less of a footprint!

- Better heat spread
- 11% less wattage required per sq. ft.
- Less cable required per sq. ft.



FLEXBONE® HEAT THERMAL IMAGE



COMPETITOR THERMAL IMAGE

The revolutionary, innovative design of the ARDEX FLEXBONE® HEAT system has outstanding energy efficiency and delivers more warmth faster, exactly where you want it...on your bare feet!

# ARDEX FLEXBONE® HEAT WARRANTY

The **ARDEX FLEXBONE® HEAT Warranty** is a **10-Year comprehensive system warranty** that covers substrate preparation, waterproofing, mortar, grout and all the components of the ARDEX FLEXBONE® HEAT System!

It's easy to register your installation. For complete details, visit [www.ardexamericas.com](http://www.ardexamericas.com) or call our Technical Department at 1-888-512-7339.

## ARDEX FLEXBONE® **HEAT** COMPLETE SINGLE-SOURCE SYSTEM SOLUTIONS

ARDEX high-performance mortars are extremely creamy, with great strength and outstanding working times.

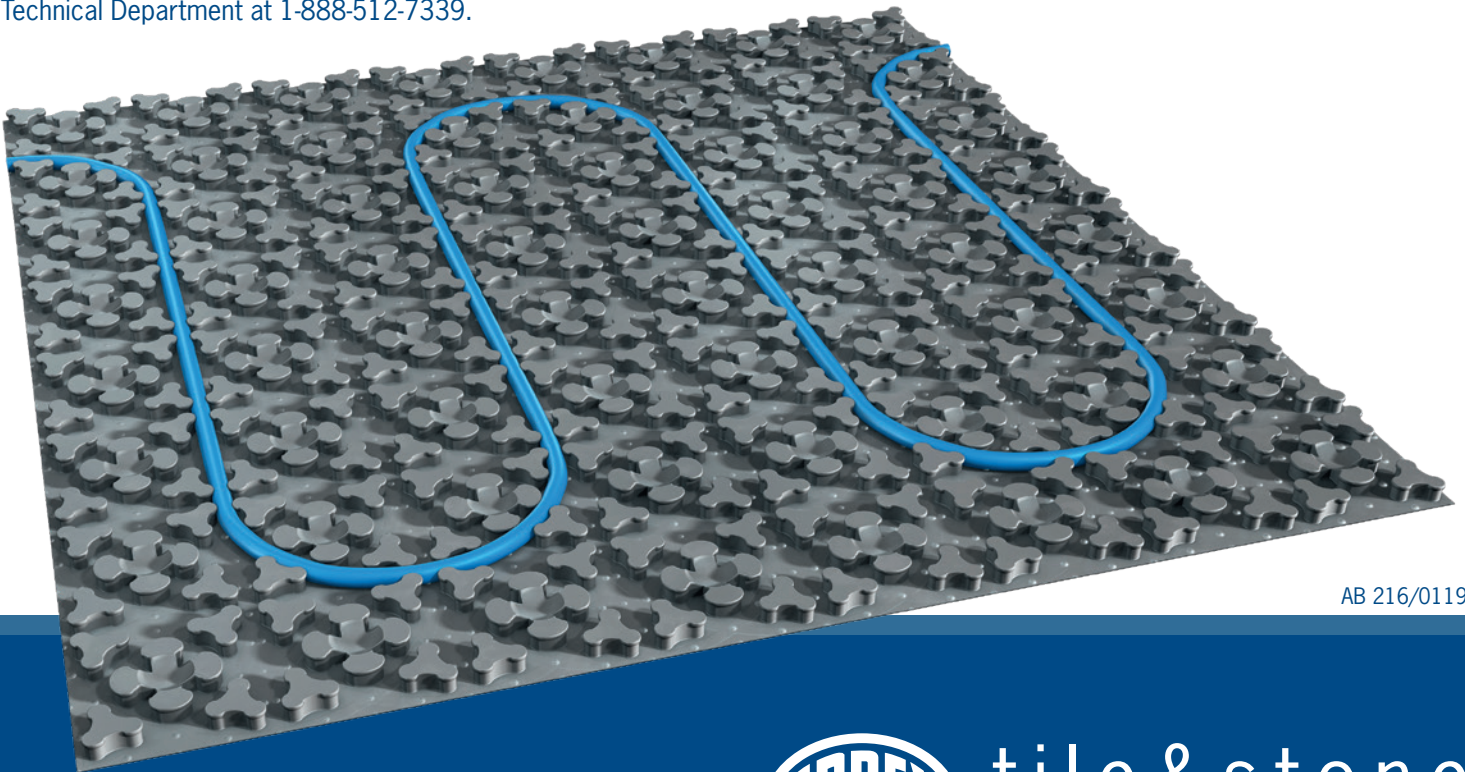
- **ARDEX S 28™ MICROTEC®** Rapid-Set, Rapid-Dry, Super-Format Tile and Uncoupling Membrane Mortar
- **ARDEX X 77™ MICROTEC®** Fiber Reinforced Tile and Stone Mortar
- **ARDEX X 78™ MICROTEC®** Fiber Reinforced, Semi-Pourable Tile and Stone Mortar
- **ARDEX X 5™** Flexible Tile and Stone Mortar
- **ARDEX AF 207™** Premixed, Rapid Set, Uncoupling Membrane Bonding Adhesive

Our industry-known self-leveling underlayments offer a very fast pre-fill option to easily encase the cables.

- **ARDEX Liquid BackerBoard®**
- **ARDEX K 60™ ARDITEX**

ARDEX revolutionary grouts are color-consistent and offer you fuller, stronger grout joints.

- **ARDEX FL™** Rapid Set, Flexible, Sanded Grout
- **ARDEX WA™** High Performance, 100% Solids Epoxy Grout and Adhesive
- **ARDEX FH™** Sanded Floor and Wall Grout



AB 216/0119



tile & stone  
Installation Systems

724-203-5000 • [www.ardexamericas.com](http://www.ardexamericas.com)