

ACCESSORIES

	Part No	Description	Application
	20001	Heavy duty drum complete with T.C.T. cutters and spacers.	For all concrete texturing, scabbling, planing and grooving applications. Also for the removal of road markings, roof chippings and brittle coatings. Use on heavy applications for longer cutter life and higher output.
	20002	Heavy duty drum complete with beam flails.	For the removal of paint, laitance and coatings from floors. De-rusting and descaling ship decks. Also used removing build up of grease, dirt and ice deposits. Keying of concrete when a fine textured surface is required.
	20003	Heavy duty drum complete with milling cutters and spacers.	For the removal of thermoplastic road/runway markings. Very efficient and cost effective with none of the problems associated with burning off thermoplastics. Also for removal of bituminous and rubber deposits.
	45500	T.C.T. Cutter: 5 point hardened steel cutter with tungsten carbide insert.	For all concrete texturing, scabbling, planing and grooving applications. Also for the removal of road markings, roof chippings and brittle coatings. Use on heavy applications for longer cutter life and higher output.
	45120	Beam Cutter: Heat treated steel cutter.	For the removal of paint, laitance and coatings from floors. De-rusting and descaling ship decks. Also used for removing build-up of grease, dirt and ice deposits. Keying of concrete when a fine textured surface is required.
	45600	Milling Cutter: Tipped with tungsten carbide.	For the removal of thermoplastic road/runway markings, rubber based deposits, cold plastic coatings from asphalt and concrete.

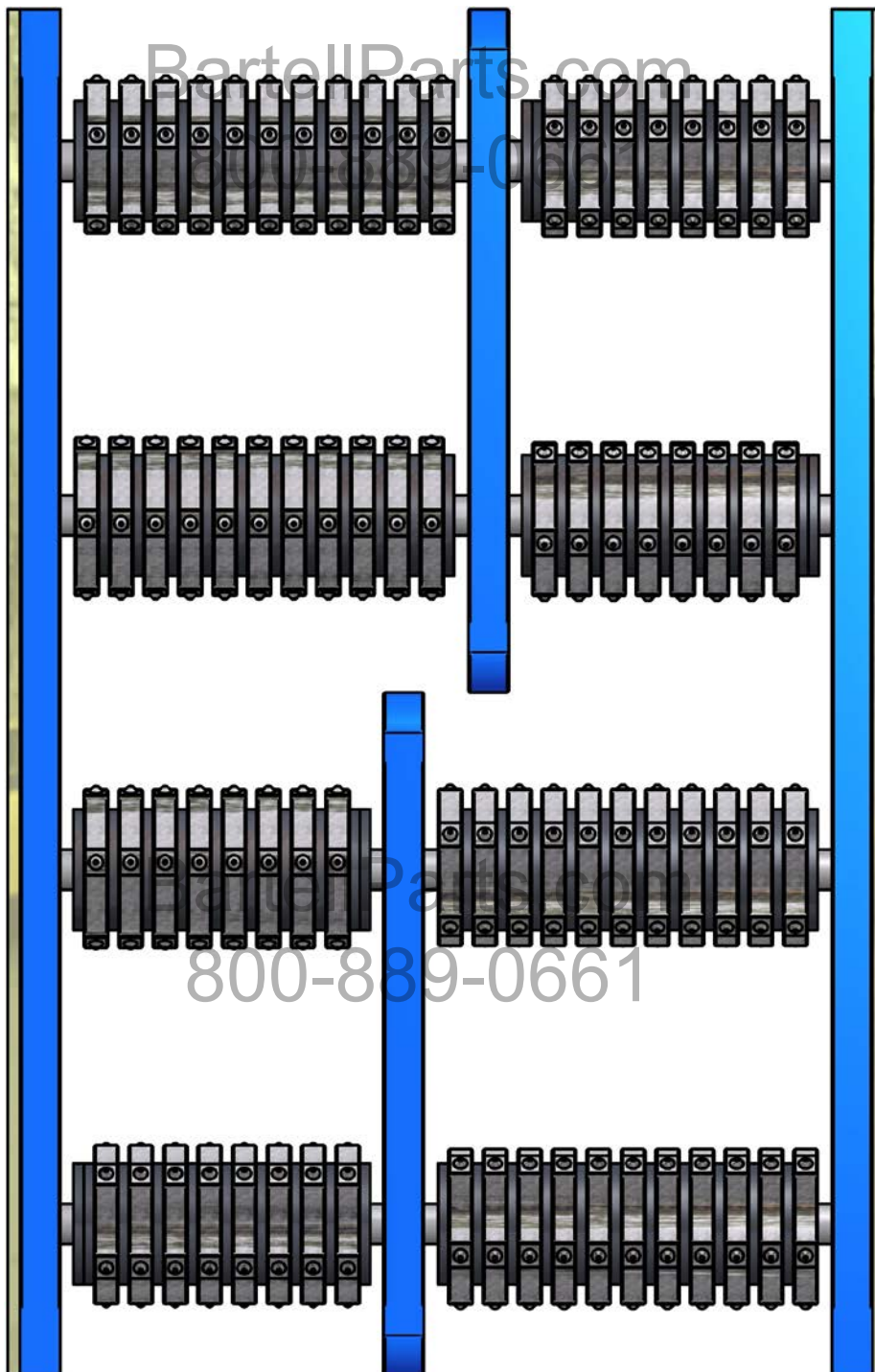
	<p>20020</p>	<p>Wire brush crimped.</p>	<p>Removal of light deposits, rust. Cleaning and polishing steel.</p>
	<p>20021</p>	<p>Wire brush twist knot.</p>	<p>Removal of laitance, grease, oil, rubber deposits, rust and flaky paint.</p>
	<p>20000</p>	<p>Heavy Duty drum complete with flail shafts.</p>	<p>For use with various cutter configurations.</p>
	<p>20010</p>	<p>Heavy duty flail shaft.</p>	<p>Hardened cutter shaft.</p>
	<p>24140</p>	<p>Spacing washer.</p>	<p>Hardened spacing washer</p>

800-889-0661

DRUM CUTTER SET-UP

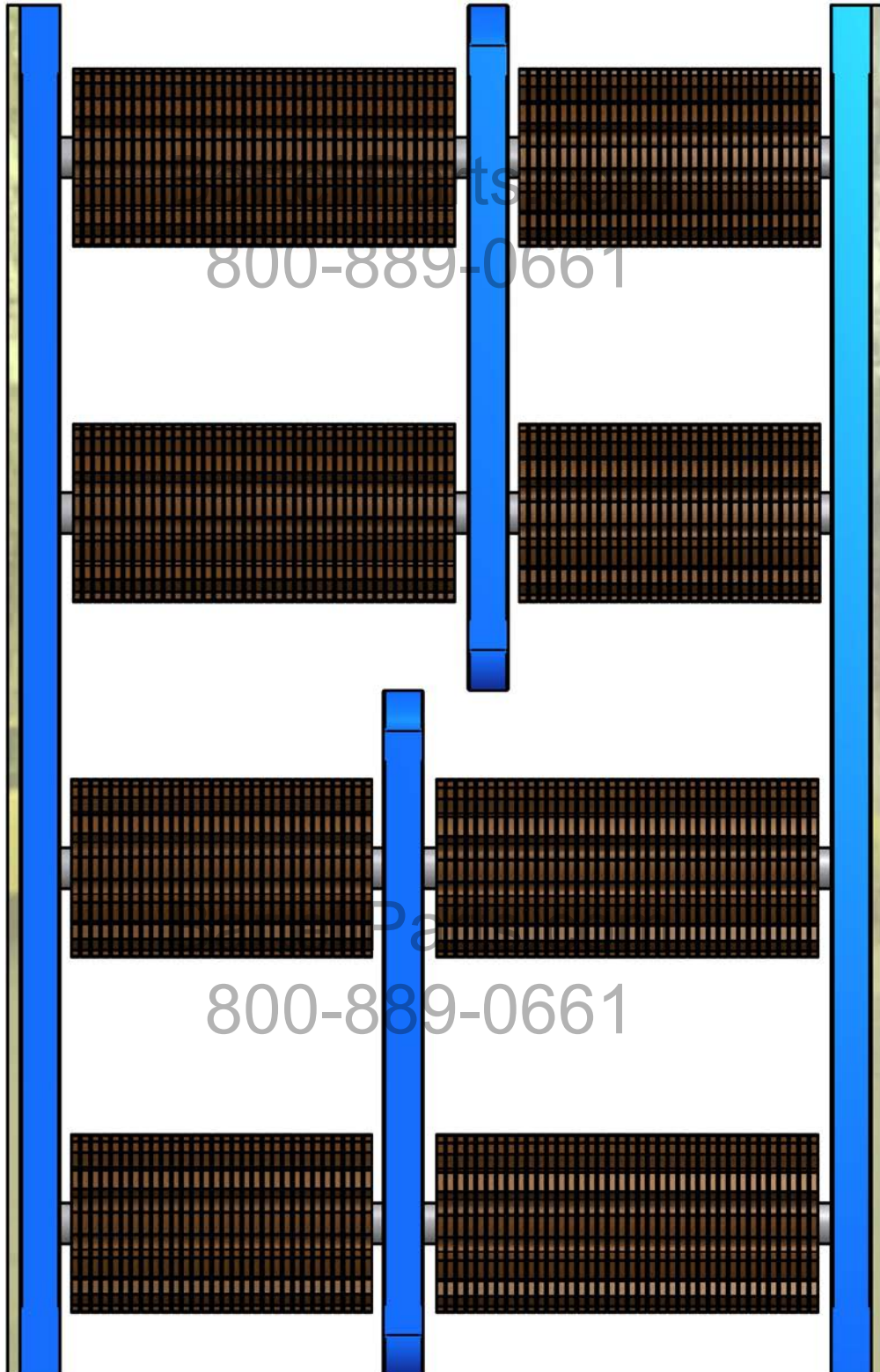
TCT

PART No.	DESCRIPTION	QTY
45500	TCT CUTTER	76
24140	SPACER	84



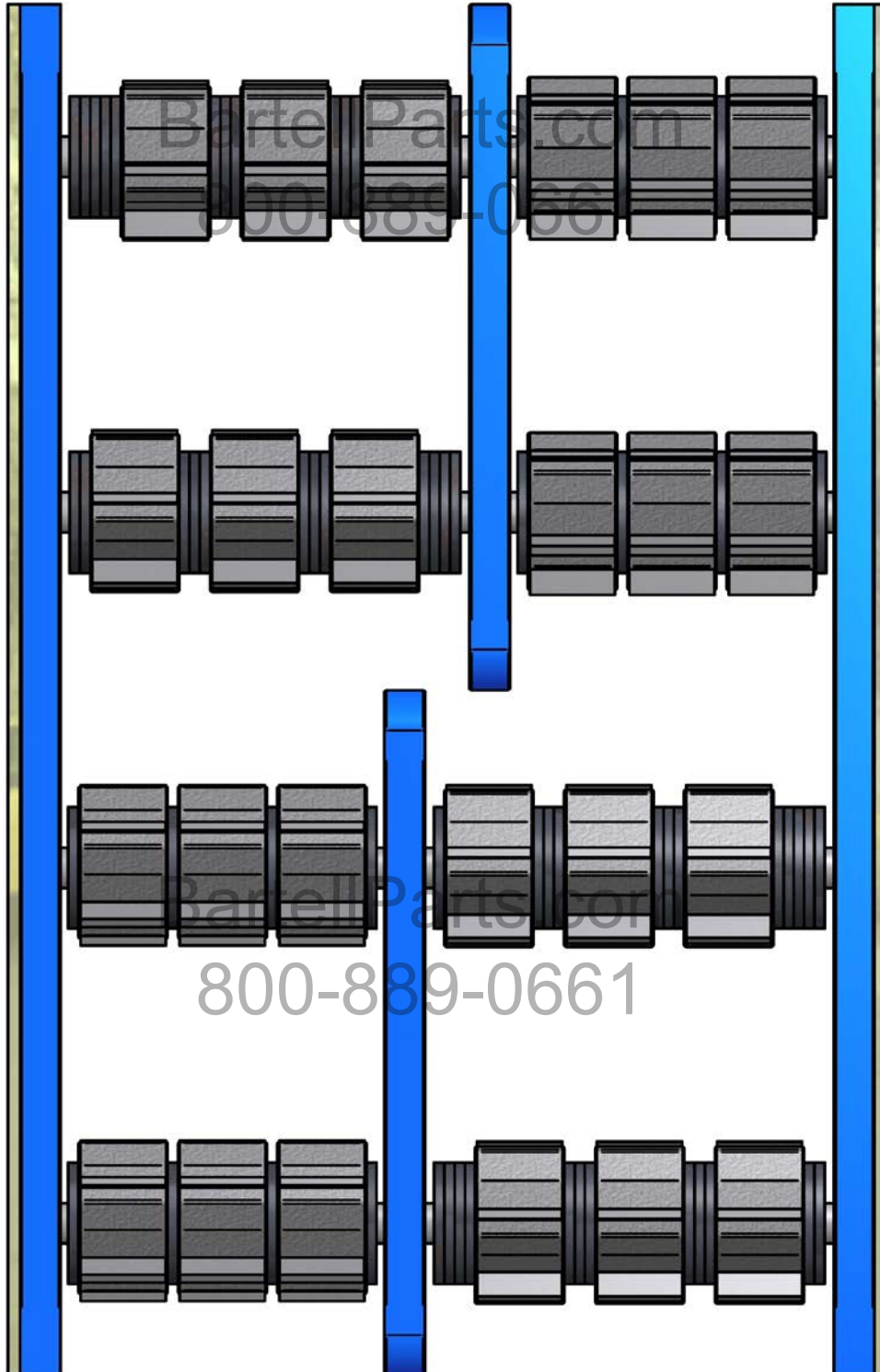
BEAM FLAILS

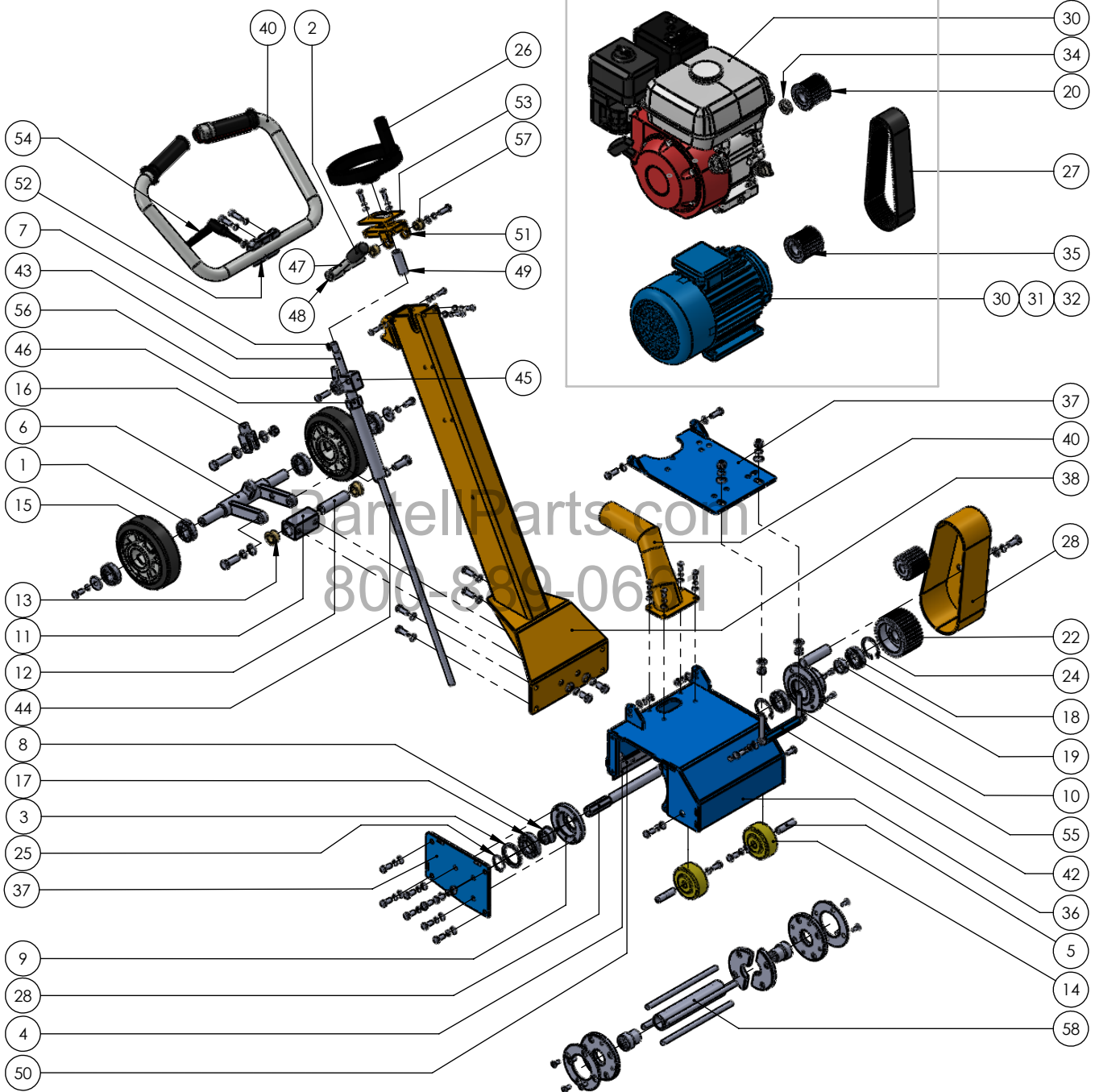
PART No.	DESCRIPTION	QTY
45120	BEAM CUTTER	272



MILLING CUTTERS

PART No.	DESCRIPTION	QTY
45600	MILLING CUTTER	24
24140	SPACER	64





ITEM NO.	SPENo	DESCRIPTION	QTY.
1	6204	Bearing	4
2	7034	Knob Grip	1
3	9102	S/P Spacer	1
4	9106	Dust Skirt	1
5	9107	Front Axle	2
6	9110	Rear Axle Assembly	1
7	9113A	Key	1
8	9114	Hex Drive Bush	1
9	9115	S/P Bearing Housing	1
10	9116	Bearing Housing Assembly	1
11	9117	Swing Arm Boss	1
12	9118	Swing Arm Pin	1
13	9119	Oillite Bush	2
14	9120	Wheel	2
15	9121	Wheel	2
16	9122	Clevis	1
17	9123	Bearing	1
18	9124	Bearing	2
19	9125	Drive Shaft Spacer	1
20	9126	Pulley (Gas)	1
21	9127	Pulley (Electric)	1

ITEM NO.	SPENo	DESCRIPTION	QTY.
22	9128	Drive Pulley	1
23	9131	Key	1
24	9132	Circlip	2
25	9133	Circlip	1
26	9135	Knob	1
27	9137	Belt (Electric & Gas/Petrol)	1
28	9138	Belt Guard	1
28	9140	Drive Shaft	1
30	9141	Engine (Honda GX160)	1
31	9142	Motor (110V)	1
32	9144	Motor (400V)	1
33	9146	Motor (230V)	1
34	9158	Spacer (Gas Drive Pulley)	1
35	9160	Pulley (NA)	2
36	9200	Main Body Assembly	1
37	9201	Right Side Plate	1
37	9202	Motor Plate	1
38	9203	Handle Assembly	1
40	9205	Handle Assembly (with Switch)	1
40	9206	Vac Port	1
42	9301	Height Adjust Block	1

ITEM NO.	SPENo	DESCRIPTION	QTY.
43	9302	Height Screw	1
44	9303	Main Rod	1
45	9304	Pitch Block	1
46	9305	Adjustable Height Tube	1
47	9308	Pitch Handle	1
48	9309	Pitch Handle Rod	1
49	9310	Handle Sleeve	1
50	9311	Wear Plate	1
51	9312	Handle Cap	1
52	9313	Handle Plate	1
53	9314	Handle Top Plate	1
54	9315	M8 Lock Handle	1
55	9316	M8 Swing Bolt	2
56	9317	Rod End	1
57	9318	Bush	2
58	9321	Spacer	1
58	20025	Drum	1

DWG No.

REV ISSUE
BEF200N A 1.01

SCALE **NOT TO SCALE**

ELECTRICAL COMPONENTS

110V

SPE PART NO	DESCRIPTION	QTY
SP2518-11	Panel box	1
SP190005	Hinge kit	1
SP630-304	Surface Mount Plug	1
9245	Rubber Mount	4
9249	Panel Box Back plate	1
9250	Plug retaining plate	1
9254	Rotary switch	1
9255	Contactor 110V	1
9256	Contact breaker	1
9258	Conduit gland	1
9259	Conduit	1
156MF@240V	Start capacitor	1
70MF@450V	Run capacitor	1

230V

SPE PART NO	DESCRIPTION	QTY
SP2518-11	Panel box	1
SP190005	Hinge kit	1
SPBF181023	Contactor 220V	1
SPLM2B7223	On/Off Push Button	1
SP60HD216	Trip 2 Pole 16 Amp	1
SPRF3814	Overload 9-14A	1
SPLM2TC10	On/Off Contact	1
SPLM2TC01	On/Off Contact	1
SPLM2AU120	Contact Holder	1
SP7302	220V 16A Schuko T/Plug	1
7562	2.5mm Cable (Black)	6
9245	Rubber Mount	4
9249	Panel Box Back plate	1
9258	Conduit gland	1
9259	Conduit	1

400V

SPE PART NO	DESCRIPTION	QTY
SP2518-11	Panel box	1
SP190005	Hinge kit	1
SPBF181040	Contactor 400V	1
SPLM2B7223	On/Off Push Button	1
SP60HD310	Trip 3 Pole 10 Amp	1
SPRF3806	Overload 4-6.5A	1
SPLM2TC10	On/Off Contact	1
SPLM2TC01	On/Off Contact	1
SPLM2AU120	Contact Holder	1
SP610PH	5 Pin 16A Ph/Rev Surface Plug	1
9242	Surface Plug Ret Plate 230/415V	1
9245	Rubber Mount	4
9249	Panel Box Back plate	1
9250	Plug retaining plate	1
9258	Conduit gland	1
9259	Conduit	1

BartellParts.com
800-889-0661