

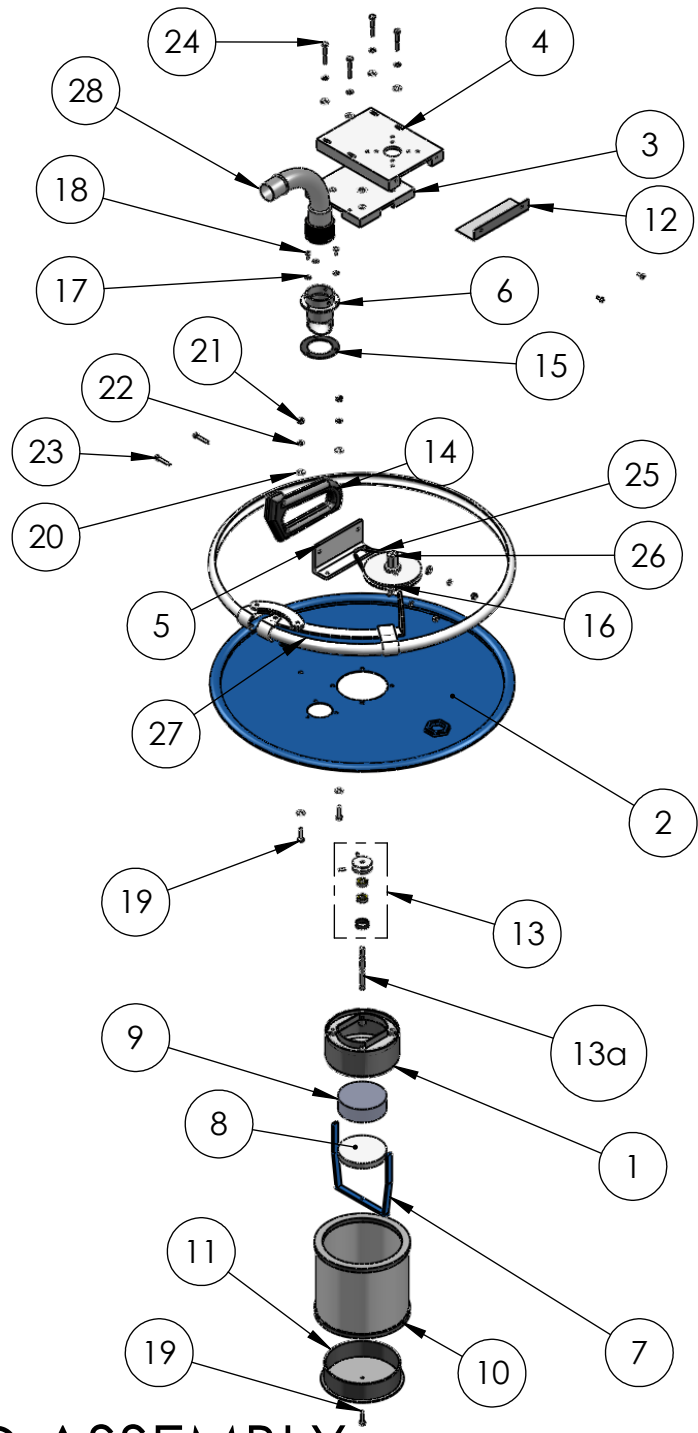


**MACHINE PARTS LIST**

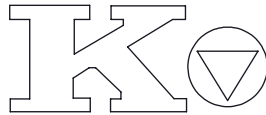
**KV-55**

**KOR-VAC**

Ref #	Part #	Description	Price
	KMG1.6	35cc Motor	\$ 390.00
14	KV-01-001	Throttle Control Assembly	\$ 89.52
5	KV-01-001A	Throttle Mounting Bracket	\$ 125.00
13	KV-01-002	1.5" Pulley	\$ 89.90
16	KV-01-003	3.5" Puley	\$ 89.90
1	KV-01-004	Vac Motor	\$ 166.46
26	KV-01-005	Motor Shaft	\$ 69.90
13a	KV-01-006	Pump Shaft	\$ 59.72
	KV-01-007	Retaining Rings 5/16(2per)	\$ 3.98
4	KV-01-008	Motor Plate	\$ 149.36
3	KV-01-009	Vent Plate	\$ 149.36
25	KV-01-013	Belt	\$ 17.88
12	KV-01-013A	Belt Guard	\$ 25.00
7	KV-01-012	Filter Brkt.	\$ 69.72
8 & 9	KV-01-010	Wet Kit	\$ 50.00
10	KV-01-011	Filter	\$ 19.90
6	KV-02-001	Lid Inlet	\$ 50.76
15	KV-02-001A	Lid Inlet gasket	\$ 7.50
28	KV-02-002	Quick Connect 90	\$ 57.20
	KV-02-003	Hose 1 1/2"-10'	\$ 35.20
	KV-02-004	1 1/2 Wand	\$ 126.44
	KV-02-005	14 inch Floor Tool	\$ 58.00
2	KV-03-001	Lid-55	\$ 230.00
27	KV-03-001A	Barrel Hoop - 55 Gallon	\$ 125.00
	KV-04-001	55 Gal Drum	\$ 120.00
	KV-04-003	2" Dump Valve	\$ 136.10
	KV-04-004-55	Cart 55 Gallon	\$ 140.00
	KV-04-005	Hose Hanger Kit	\$ 69.90



# HEAD ASSEMBLY

	NAME	DATE	Part #	<b>KV55-01-00</b>	
DRAWN	CLS	3/23/2009		 <p>2442 Rice ave. West Sacramento CA, 95691 USA (916) 372-9248 FAX (916) 372-9248 (888) 727-4560 WWW.KOR-IT.COM</p>	
CHECKED					
COMMENTS: BREAK ALL SHARP EDGES.					
<b>PROPRIETARY AND CONFIDENTIAL</b> THE INFORMATION CONTAINED IN THIS DRAWING IS THE SOLE PROPERTY OF KOR-IT <sup>®</sup> Inc. ANY REPRODUCTION IN PART OR AS A WHOLE WITHOUT THE WRITTEN PERMISSION OF KOR-IT <sup>®</sup> Inc. IS PROHIBITED.			SIZE	DWG. NO.	REV
			<b>A</b>	<b>KV55010000</b>	<b>0</b>
SCALE: NTS		WEIGHT:	SHEET 2 OF 31		