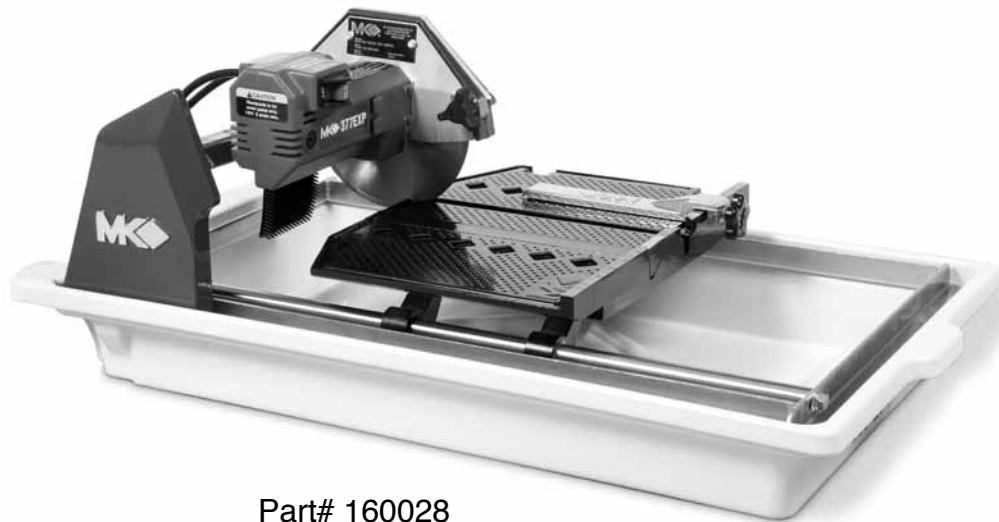


www.mkdiamond.com

MK-377EXP TILE SAW OWNER'S MANUAL OPERATING INSTRUCTIONS & PARTS LIST

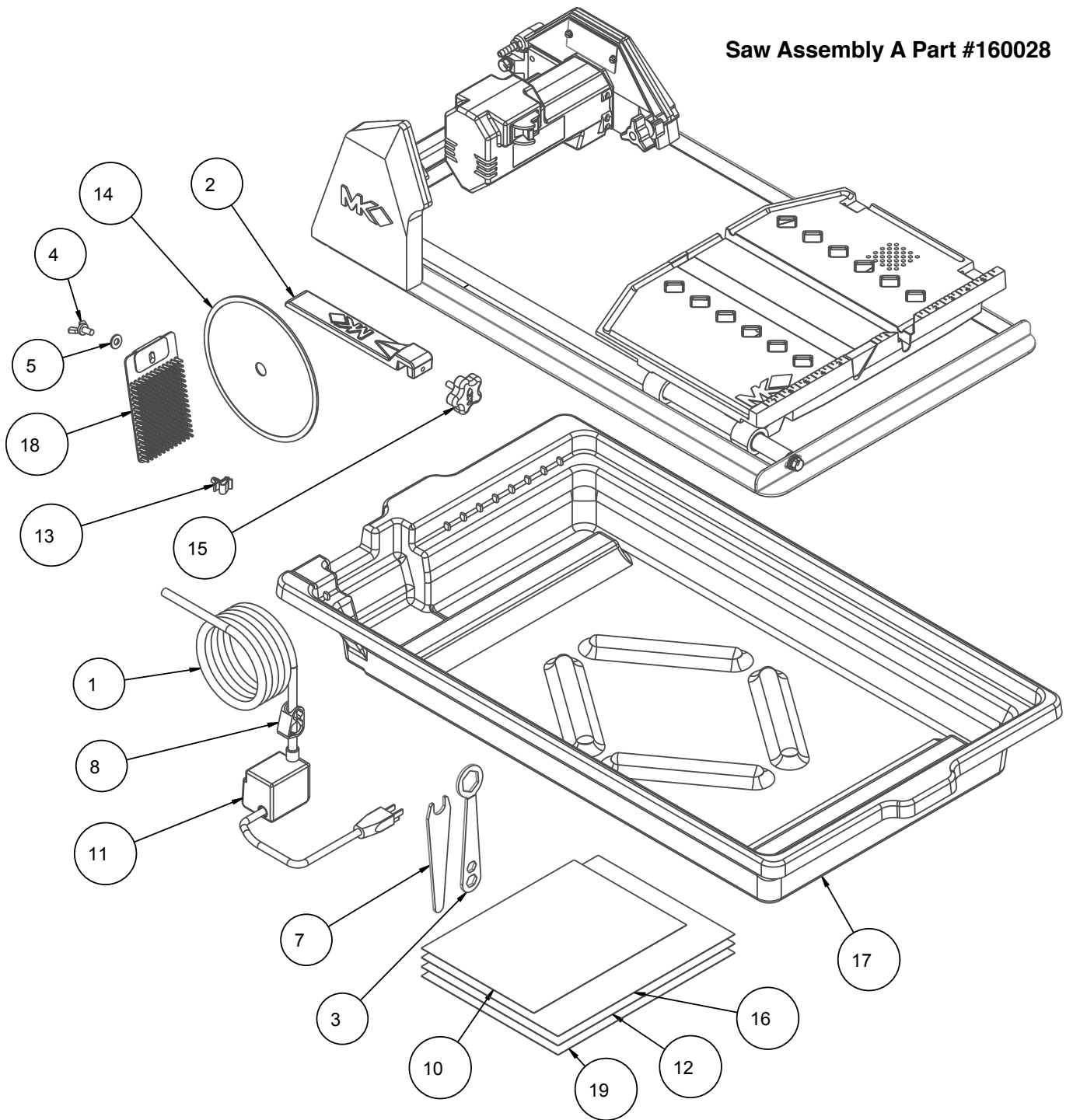


Part# 160028

Revision 202	02.2017
Manual Part No. 160030	

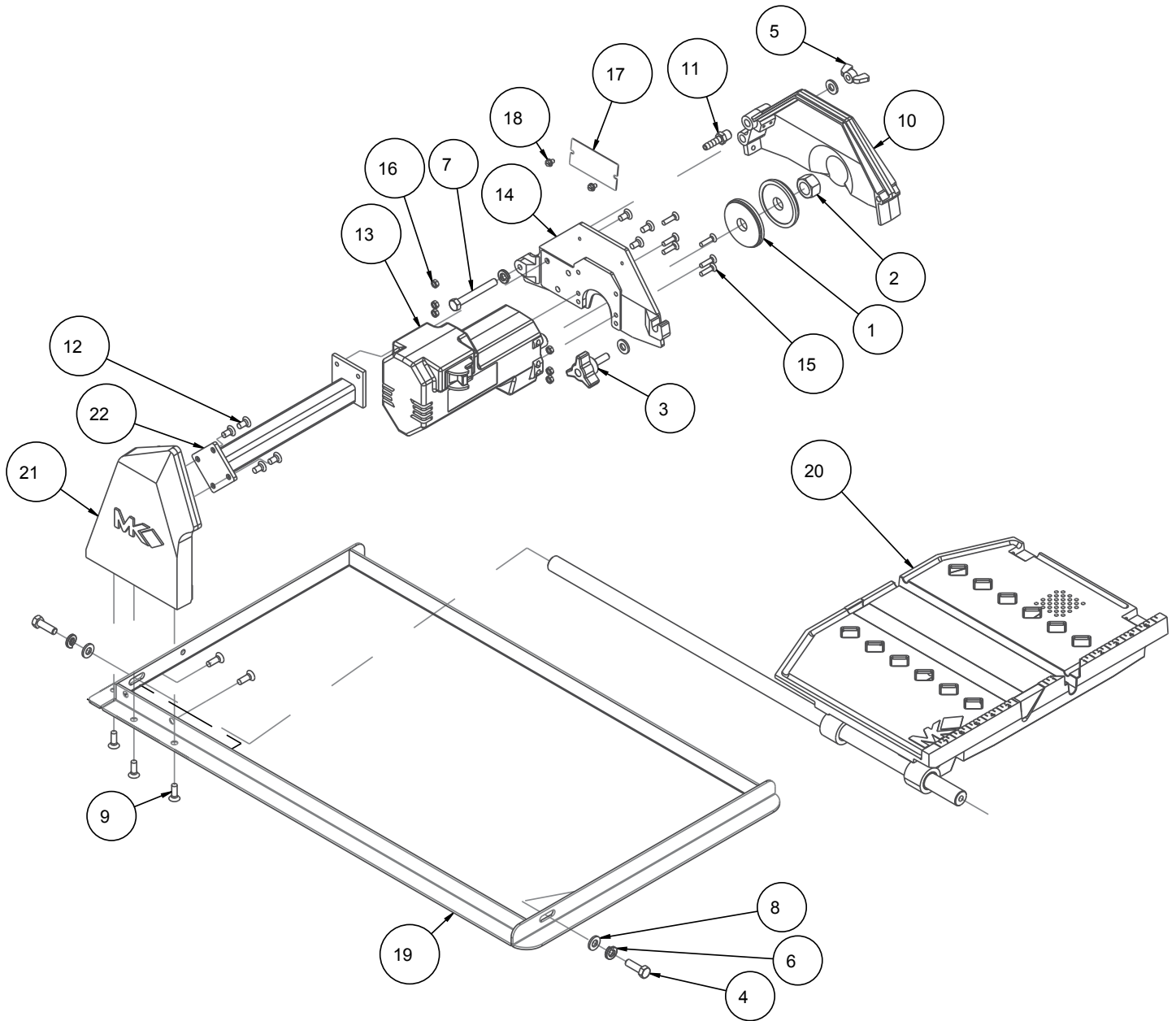
Caution: Read all safety and operating instructions before using this equipment. This parts list **MUST** accompany the equipment at all times.

Saw Assembly A Part #160028



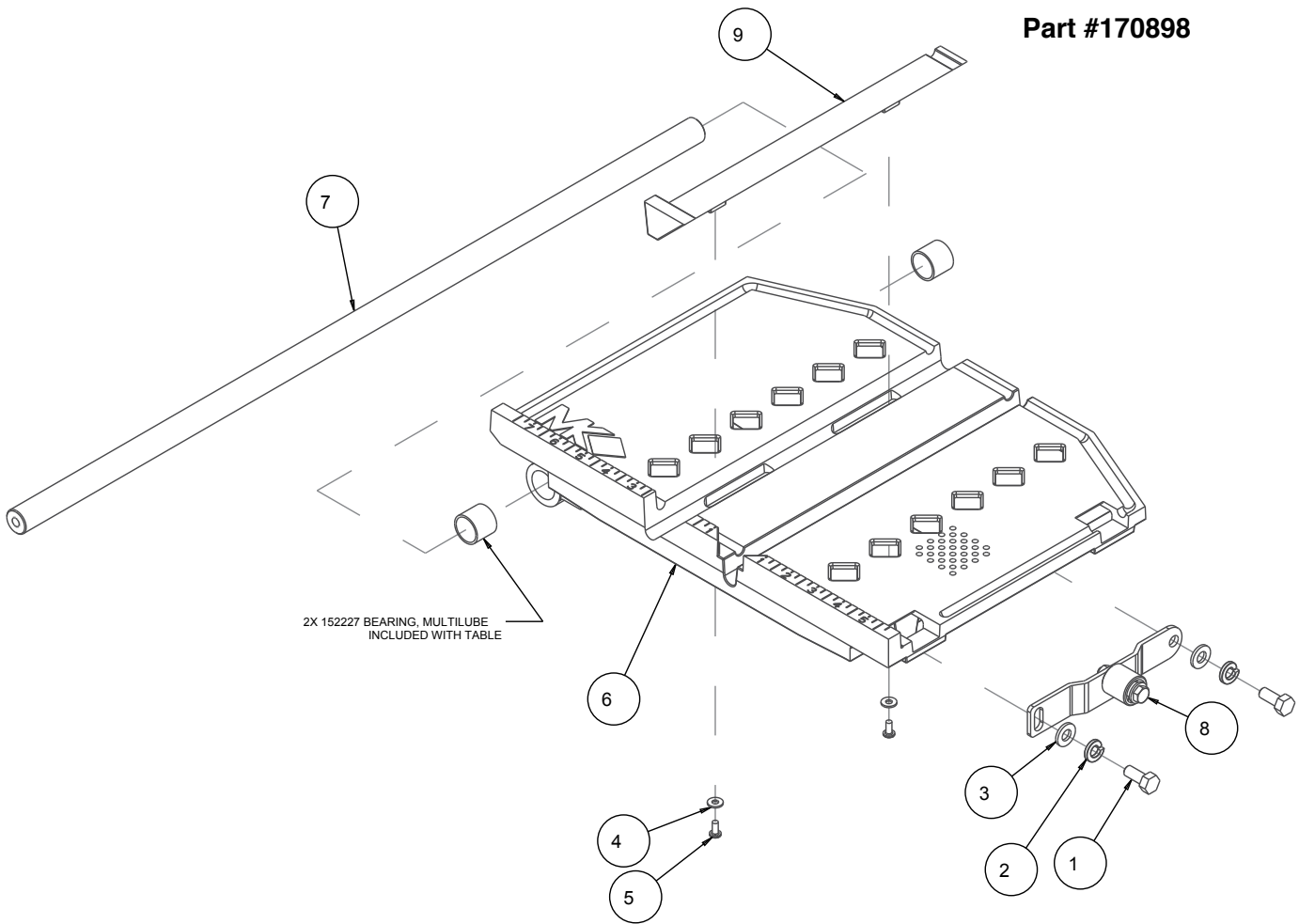
Item	Description	Part #	Qty
1	HOSE, VINYL, 1/4X3/8 (6.0')	132951	1
2	CASTING, ACC RIP GUIDE-COMP	134551	1
3	WRENCH, TILE SAW NUT 15/16	134684	1
4	SCREW, WING, 1/4-20X1/2	151888	1
5	WASHER, FLAT, SAE, 1/4	151915	1
6	CARTON, ACCESS PK-101/1080/880	153366	1
7	WRENCH, TILES AW, 11/16 OPEN END	153450	1
8	CLAMP, HOSE, 1/4-1/2 FLOW	154394	1
9	CASTING, BLD GRD, 7", COMP	154811	1
10	CARD, WARRANTY REGISTER SAW	155037	1
11	PUMP, WATER, 115V 60HZ	155987-VP	1
12	SELL SHT, TILE ACCESSORY	156915	1
13	CLIP, CORD 1/4" PUSH MOUNT	157259	1
14	MK-HDTCM WET 7X060X7/8	157913	1
15	KNOB, RUBBER, 1/4-20 X 3/4" LONG	159428-1	1
16	OWNER'S MANUAL MK-377EXP	160030	1
17	PAN, WATER MK-370EXP/1080	160041	1
18	GUARD, SPLASH	160310	1
19	SHEET, WARNING LABELS, TILE SAW	166012	1

Saw Assembly B Part #160028



Item	Description	Part #	Qty
1	FLANGE, OUTER, 2-3/8	135830	2
2	NUT, HEX, 5/8-18	135848	1
3	KNOB, DAVIES, 5/16-18 X 1	151681	1
4	SCREW, HEX HD, 5/16-18 X 1	151743	2
5	NUT, WING, NYLK, 5/16-18	151746	1
6	WASHER, LOCK, SPLIT, 5/16	151747	3
7	SCREW, HEX HD, TAP, 5/16-18X2-1/2	151748	1
8	WASHER, FLAT, SAE, 5/16	151754	4
9	SCREW, FLAT HD, 1/4-20X3/4	151657	5
10	CASTING, BLD GRD, 7", COMP	154811	1
11	FITTING, 1/8 MNPT X 1/4 BARB	155809	1
12	SCREW, FLAT HEAD, 1/4-20X1/2 PHIL	155812	7
13	MTR, 5.0 AMP 115V 50/60HZ	157226-G	1
14	CASTING 170, MOTOR MOUNT, COMP	157403	1
15	SCREW, FLAT HD, M5-8X16MM	157404	6
16	NUT, HEX, M5-.8	157405	6
17	TAG, SERIAL NUMBER, BLANK	157500-RW	1
18	SCREW, QUICK DRIVE, #8-32X1/4	162850	2
19	WELDMENT, FRAME	167449	1
20	ASSY, TABLE, 377EXP	170898	1
21	CASTING, POST, 377EXP, COMP	170899	1
22	ARM, CUTTING HEAD, 377EXP	170902	1

Part #170898



Item	Description	Part #	Qty
1	SCREW, HEX HD, CAP, 5/16-18 X 3/4	151369	2
2	WASHER, LOCK, SPLIT, 5/16	151747	2
3	WASHER, FLAT, SAE, 5/16	151754	2
4	WASHER, FLAT, SAE, #8	155454	2
5	SCREW, 8-32 X 3/8 PAN HEAD PHILLIPS	156614	2
6	CASTING, TABLE, 370/770EXP-COMP	159939	1
7	BAR, GUIDE 3/4 DIA	159942	1
8	ASSY, WHEEL BRKT, 370EXP	168023	1
9	INSERT, TABLE, 377EXP, COMP	170901	1

ITEM	NUMBER	DESCRIPTION	
1.	139295	MK-200, 7" x 5/8 Arbor Premium grade Diamond Blade for smooth, chip-free cutting on tile	
2.	139311	MK-215, 7" x 5/8 Arbor Supreme grade diamond blade for hard materials	
3.	153293	MK-315, 7" x 5/8 Arbor Supreme super hi-rim diamond blade	
4.	134577-MK	Dual 45° Flat Angle Guide	
5.	134551-MK	Rip Guide	
5.	134569-MK	90° Protractor	
6.	152792	Dressing Stone	
7.	152610	Ground Fault Circuit Interrupter	
8.	160131	Stand for 7" Tile Saw	

ORDERING INFORMATION

You may order MK Diamond products through your local MK Diamond distributor or, you may order direct from MK Diamond.

When ordering direct from MK Diamond, please have the following information ready before calling:

- The Model Number of the saw
- The Serial Number of the saw
- Where the saw was purchased and when
- The Part Number for the part(s) being ordered
- The Part Description for the part(s) being ordered

NOTE: There is a \$25.00 minimum order when ordering direct from MK Diamond. A \$6.00 charge will be added to orders having a net billing value under \$50.00. All purchases must be made using VISA, MasterCard or American Express.

All parts may be ordered by calling toll free to – 800 421-5830 or 310 539-5221 and asking for Customer Service. For technical questions, call – 800 474-5594.

RETURN MATERIALS POLICY

To expedite the service relative to the return of a product purchased through MK Diamond, please observe the following:

NOTE: When returning all items, they must have been purchased within the previous twelve (12) months.

- Have the Model Number of the saw
- Have the Serial Number of the saw
- Have the location of where the saw was purchased
- Have the date when the saw was purchased
- Contact Customer Service for approval to return the item(s)
- Obtain a Returned Goods Number (RGA) authorizing the return
- Follow the packaging instructions in the following section
- Ensure the RGA number is on the outside of the returned package
- Ensure your item(s) are prepaid to the destination

For returned items, call toll free to – 800 421-5830 or 310 539-5221 and ask for Customer Service.

PACKAGING INSTRUCTIONS

- Remove the Cutting Head and Support Angle Assembly
- Dry the saw before shipping
- When packing, include the following: Saw, Diamond Blade, Blade Guard and Support Angle Assembly and Adjustable Cutting Guide (Other Accessories are not required)
- Package the unit in its original container or one of comparable size (do not ship the unit partially exposed)
- Ensure all parts are secured in the packaging to prevent moving

AUTHORIZED SERVICE CENTERS

For quicker repair time, you may contact MK Diamond Customer Service, toll free, at 800 421-5830 or 310 539-5221 for the Authorized Service Center closest to you or visit our web site at www.mkdiamond.com. For technical questions, call – 800 474-5594.

CONTACT

Please contact MK Diamond Products, Inc. Customer Service Department with any questions you might have regarding distributors, parts or service.

Telephone: **(800) 421-5830**

Fax: **(310) 539-5158**

E-mail: **Customer_Service@MKDiamond.com**

Customer Service Hours: **Monday through Friday, 6AM-4PM PST**

MK Diamond Products, Inc.

1315 Storm Parkway

Torrance, CA 90501

MK DIAMOND PRODUCTS, INC. LIMITED WARRANTY

MK DIAMOND PRODUCTS, INC. will guarantee every machine they build, to be free from defects in material and workmanship for (1) one year from date of purchase. The obligation of MK DIAMOND PRODUCTS, INC. under this warranty is limited to the repair or replacement of any parts which, under normal use, prove to be defective in material or workmanship. The parts involved or the unit in question should be returned to MK DIAMOND PRODUCTS, INC. or to a point designated by us, transportation prepaid.

This warranty does not obligate us to bear the cost of labor or transportation charges in connection with replacement or repair of defective parts. Likewise, it shall NOT apply to any unit which has been subjected to misuse, neglect or accident. This warranty does NOT apply to any machine which has been repaired or altered outside our factory.

This warranty does NOT obligate MK DIAMOND PRODUCTS, INC., with respect to items not of our manufacture, such as engines, motors, hydraulics, etc., which are subject to their own guarantees and warranties.

We shall in no event be liable for consequential damages or contingent liabilities arising out of failure of any equipment or parts to operate properly.

© COPYRIGHT 2017, MK DIAMOND PRODUCTS, INC. ALL RIGHTS RESERVED.

The MK Diamond logo is a registered trademark of MK Diamond Products, Inc. and may not be used, reproduced, or altered without written permission. All other trademarks are the property of their respective owners and used with permission.

MK Diamond may have patents, patent applications, trade marks, copyrights of other intellectual property right covering this product in this document.

This manual MUST accompany the equipment at all times. This manual is considered a permanent part of the equipment and should remain with the unit if resold.

The information and specifications included in this publication were in effect at the time of approval for printing.

MK-377EXP TILE SAW
OWNER'S MANUAL & OPERATING INSTRUCTIONS



MK Diamond Products, Inc.

MK Diamond Products, Inc.
1315 Storm Parkway
Torrance, CA 90501

Toll-Free: (800) 421-5830
Phone: (310) 539-5221
Fax: (310) 539-5158
www.mkdiamond.com