

www.mkdiamond.com

MK-212 SERIES PARTS LIST

MODELS	P/N
MK-212-4	159414
MK-212-4-SPCL	159414-SPCL
MK-212-6	167882



Revision 104	09.2019
Manual Part No. 159862-PM	

Caution: Read all safety and operating instructions before using this equipment. This owners manual **MUST** accompany the equipment at all times.

We at MK Diamond want to congratulate you on selecting the MK-212 Saw. We are certain that you will be pleased with your purchase. MK Diamond takes pride in producing the finest products in the industry.

Operated correctly, your MK-212 Saw should provide you with years of quality service. In order to help you, we have included this manual. This owners manual contains information necessary to operate and maintain your MK-212 Saw safely and correctly. Please take a few minutes to familiarize yourself with the MK-212 Saw by reading and reviewing this manual.

If you should have questions concerning your MK-212 Saw, please feel free to call our friendly customer service department at: 800 421-5830

Regards,

MK Diamond

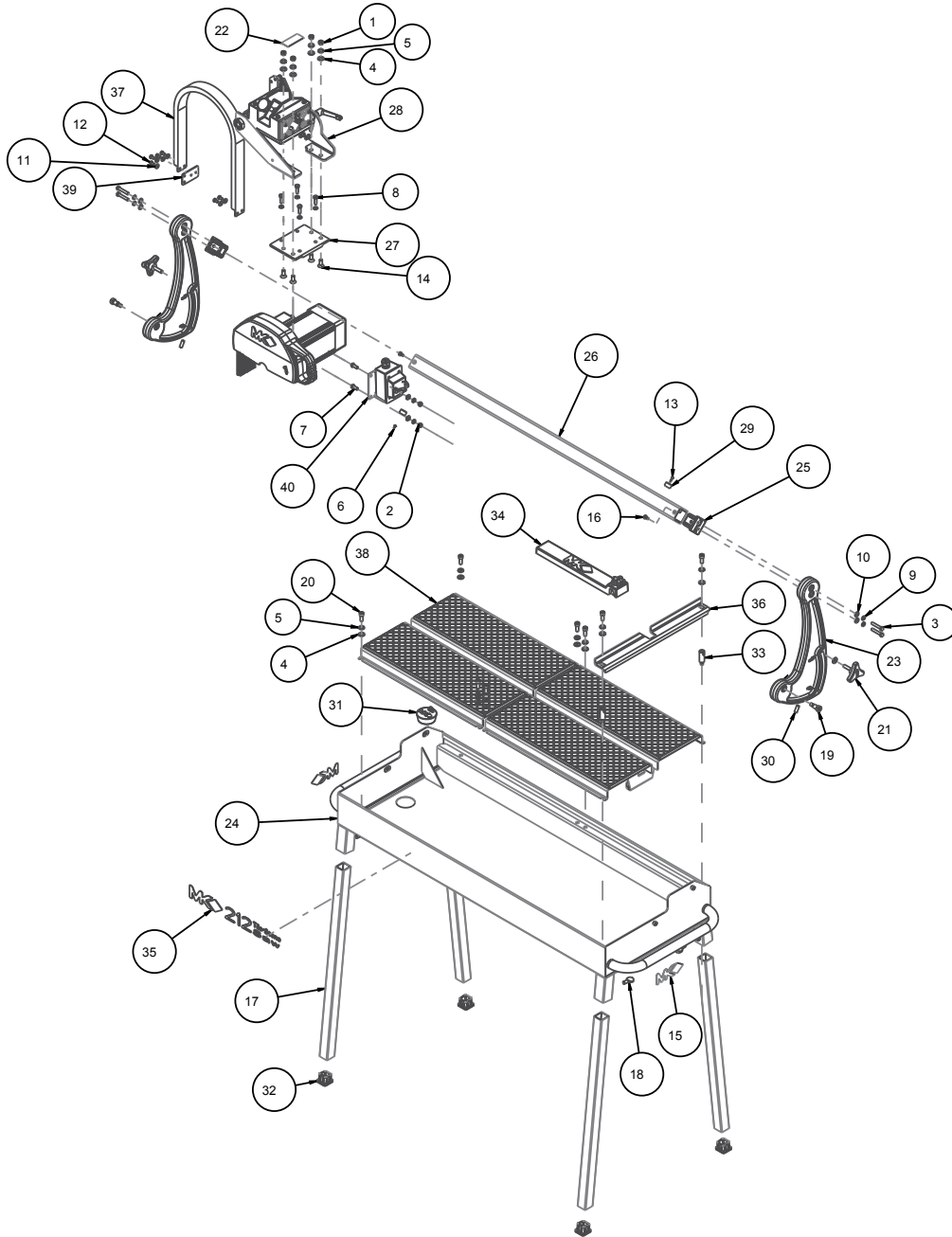
NOTE THIS INFORMATION FOR FUTURE USE:

MODEL NUMBER:	
SERIAL NUMBER:	
PURCHASE PLACE:	
PURCHASE DATE:	

IMPORTANT: For your (1) one year warranty to be effective, complete the warranty card (including the Serial Number) and mail it in as soon as possible.

FIGURE 1 - MK-212-4 TILE SAW P/N 159414	4-5
FIGURE 2 - MK-212-4 MOTOR P/N 159414	6-7
FIGURE 3 - MK-212-4 TILE SAW W/12" CUTTING HEAD P/N 159414-SPCL	8-9
FIGURE 4 - MK-212-4 MOTOR P/N 159414-SPCL	10-11
FIGURE 5 - MK-212-6 TILE SAW P/N 167882	12-13
FIGURE 6 - MK-212-6 ASSY, MOTOR P/N 167882	14-15
FIGURE 7 - MK-212 ASSY, CUTTING HEAD P/N 159853	16-17
FIGURE 8 - MK-212-4 ASSY, SWITCH BOX P/N 172836-14	18
FIGURE 9 - MK-212-6 ASSY, SWITCH BOX P/N 172836-16	19
FIGURE 10 - WIRE DIAGRAM	20
FIGURE 11 - MK-212 ASSY, TABLE P/N 167762	21
FIGURE 12 - MK-212 ASSY, TABLE P/N 167762-MK	22
FIGURE 13 - MK-212-6, ASSY, TABLE P/N 168054	23
FIGURE 14 - MK-212-6, ASSY, TABLE P/N 168054-MK	24
FIGURE 15 - MK-212 ACCESSORY KIT P/N 160688	25

FIGURE 1 MK-212-4 TILE SAW P/N 159414



ITEM	DESCRIPTION	P/N	QTY.
1	NUT, 3/8-16 HEX	101188	4
2	NUT, HEX, 5/16 - 18	101196	2
3	SCREW, HEX HD, CAP, 5/16-18 X 1-3/4	150919	4
4	WASHER, 3/8 SAE FLAT	150923	14
5	WASHER, 3/8 SPLIT LOCK	150925	12

FIGURE 1 MK-212-4 TILE SAW P/N 159414

ITEM	DESCRIPTION	P/N	QTY.
6	SCREW, PAN HD SELF TPI0-24 X 3/8	151262	1
7	SCREW, HEX HD, CAP, 5/16-18 X 3/4	151369	2
8	SCREW, HEX HD, 5/16-18X1	151743	4
9	WASHER, LOCK, SPLIT, 5/16	151747	10
10	WASHER, FLAT, SAE, 5/16	151754	6
11	WASHER, FLAT, SAE, 1/4	151915	6
12	SCREW, 1/4-20X1/2 HEX HEAD	152608	6
13	SCREW, PHILP SELF TAP 10-24 X 5/8"	153681	1
14	SCREW, FLAT, HD, ALN, 3/8-16 X1	154019	4
15	LABEL, 1-3/4 X 5 MK LOGO	154335	2
16	SCREW, FLAT HD, 1/4-20X3/4	154657	4
17	LEG	155397	4
18	SCREW, THUMB 3/8-16 X 3/4"	155398	4
19	SCREW, SHLDR, SOC HD, 1/2X3/4	156177	2
20	SCREW, SOCKET HEAD CAP 3/8-16 X1	156602	8
21	KNOB, TRI PLASTIC MK-660 1-1/2	156770-02	2
22	TAG, SERIAL NUMBER, BLANK	157500-RW	1
23	POST, PIVOT COMP	159418	2
24	FRAME, PAN WELDMENT	159419	1
25	CASTING, RAIL BLOCK, MK-212-COM	159622	2
26	RAIL, 2 X 2 X 50	159641	1
27	MOUNT, SOGA MOTOR	159642	1
28	CUTTING HEAD	159853	1
29	STOP, RUBBER BUMPER	159855	2
30	SCREW, SET CUP, LOC, 3/8-16 X 1"	159856	2
31	PLUG, 2 1/2 DIA RUBBER	159858	1
32	FOOT, RUBBER	159977	4
33	STAND OFF, BACKSTOP	160117	2
34	ASSY, 15" RIP GUIDE	160288	1
35	LABEL, MK-212, TITLE	160669	2
36	STOP, BACK	165685	1
37	CARRIER, CABLE	167430	1
38	ASSY, TABLE, MK-212	167762	2
39	BRACKET, CABLE CARRIER, POST MNT	168048	1
40	ASSY, SWITCH BOX, 30A, 212	172836-14	1

FIGURE 2 MK-212-4 TILE SAW P/N 159414

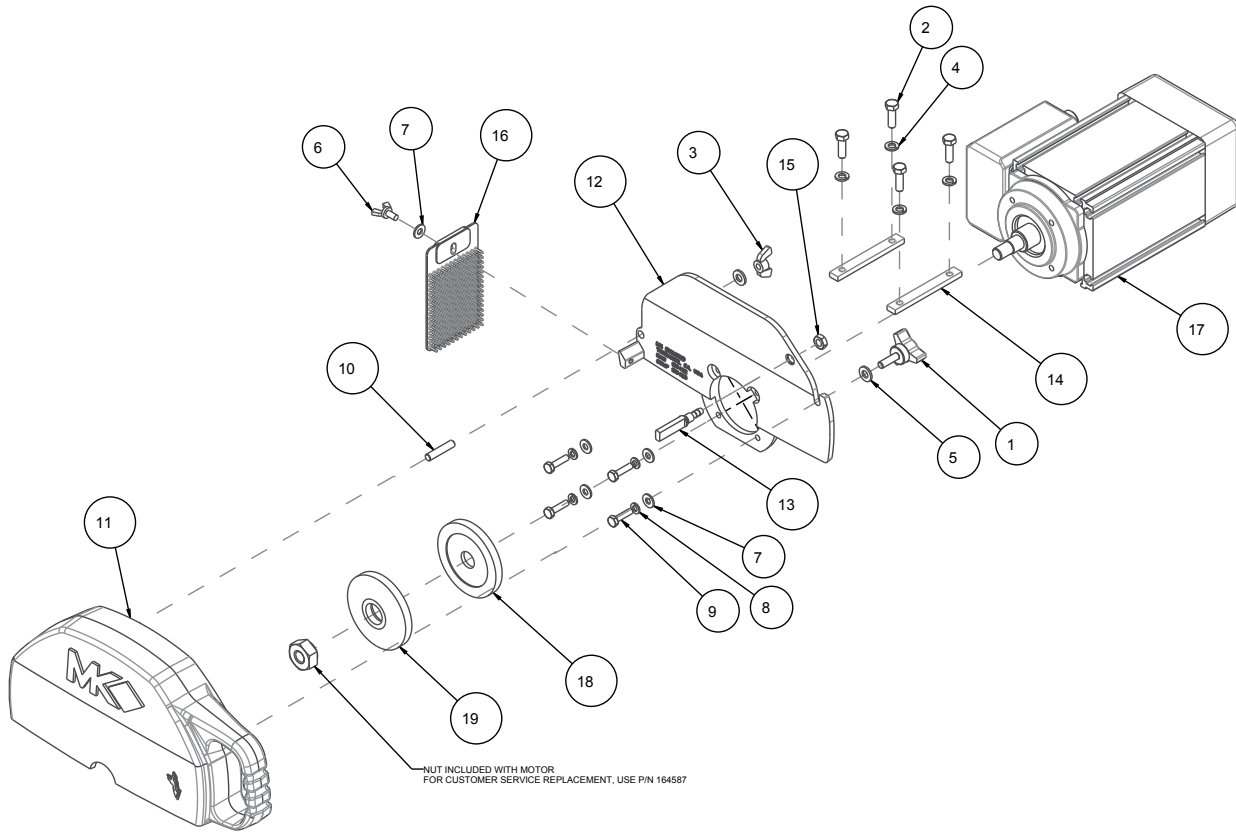
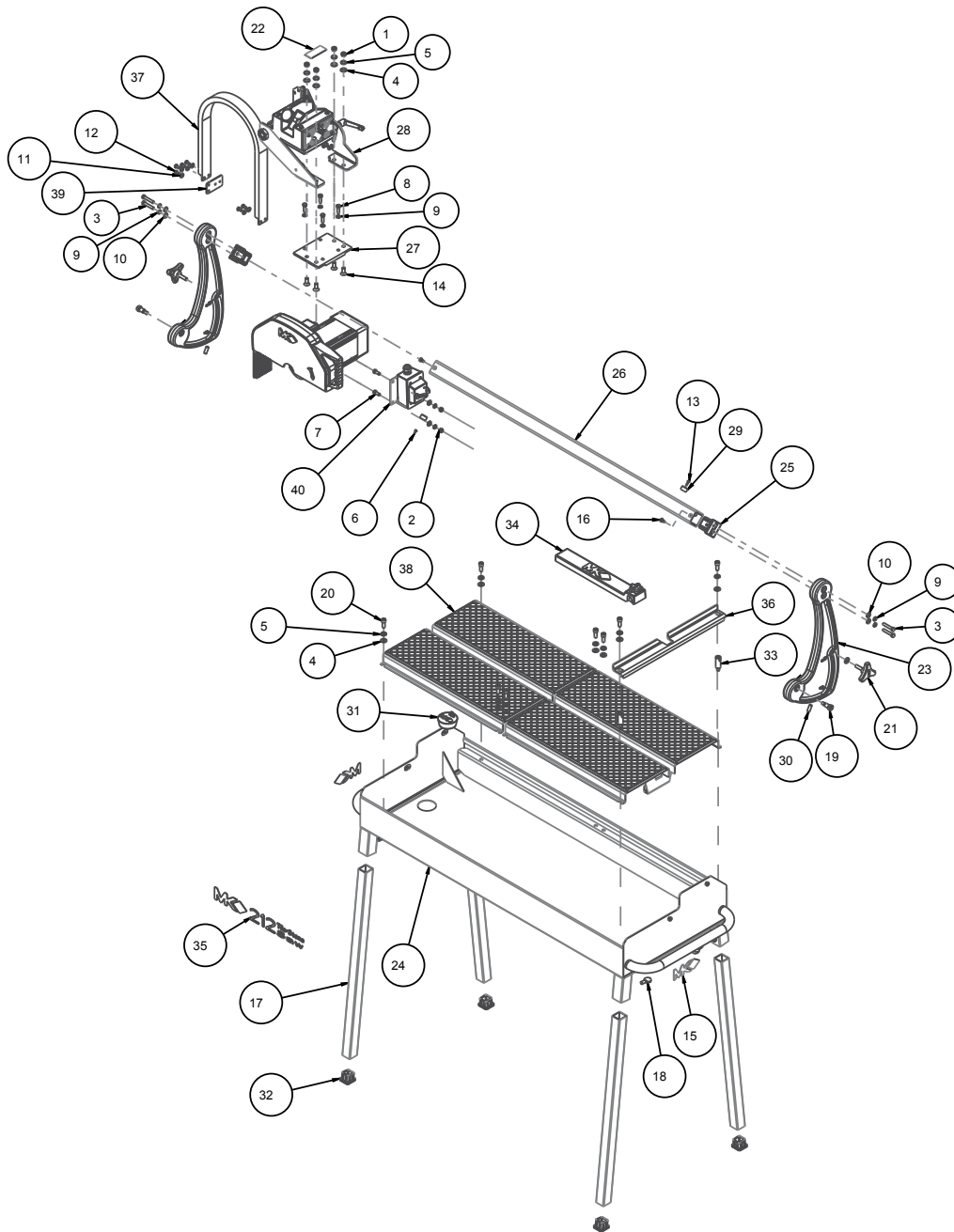


FIGURE 2 MK-212-4 TILE SAW P/N 159414

ITEM	DESCRIPTION	P/N	QTY.
1	KNOB, DAVIES, 5/16-18 X 1	151681	1
2	SCREW, HEX HD, 5/16 - 18 X 1	151743	4
3	NUT, WING, NYLK, 5/16-18	151746	1
4	WASHER, LOCK, SPLIT, 5/16	151747	4
5	WASHER, FLAT, SAE, 5/16	151754	2
6	SCREW, WING, 1/4-20X1/2	151888	1
7	WASHER, FLAT, SAE, 1/4	151915	5
8	WASHER, LOCK, SPLIT, 1/4	152591	4
9	SCREW, HEX HD, TAP, 1/4-20X1	152676	4
10	STUD, 5/16-18 X 1-1/2	153680	1
11	GUARD, BLADE -COMP	159416	1
12	GUARD, INNER BLADE (COMP)	159423	1
13	MANIFOLD, WATER	159854	1
14	KEY, MOTOR MOUNT	159859	2
15	NUT, 3/8-16 HEX	159863	1
16	GUARD, SPLASH	160310	1
17	2 H.P. SOGA 115V MOTOR	162078	1
18	FLANGE, BLADE, INNER, 10"	172647	1
19	FLANGE, BLADE, OUTER	172648	1

FIGURE 3 MK-212-4 TILE SAW WITH 12" CUTTING HEAD P/N 159414-SPCL



ITEM	DESCRIPTION	P/N	QTY.
1	NUT, 3/8-16 HEX	101188	4
2	NUT, HEX, 5/16 - 18	101196	2
3	SCREW, HEX HD, CAP, 5/16-18 X 1-3/4	150919	4
4	WASHER, 3/8 SAE FLAT	150923	14
5	WASHER, 3/8 SPLIT LOCK	150925	12
6	SCREW, PAN HD SELF TPI0-24 X 3/8	151262	1

FIGURE 3 MK-212-4 TILE SAW WITH 12" CUTTING HEAD P/N 159414-SPCL

ITEM	DESCRIPTION	P/N	QTY.
7	SCREW, HEX HD, CAP, 5/16-18 X 3/4	151369	2
8	SCREW, HEX HD, 5/16-18X1	151743	4
9	WASHER, LOCK, SPLIT, 5/16	151747	10
10	WASHER, FLAT, SAE, 5/16	151754	6
11	WASHER FLAT SAE, 1/4	151915	6
12	SCREW, 1/4-20 X 1/2 HEX HEAD	152608	6
13	SCREW, PHILP SELF TAP 10-24 X 5/8"	153681	1
14	SCREW, FLAT, HD, ALN, 3/8-16 X1	154019	4
15	LABEL, 1-3/4 X 5 MK LOGO	154335	2
16	SCREW, FLAT HD, 1/4-20X3/4	154657	4
17	LEG	155397	4
18	SCREW, THUMB 3/8-16 X 3/4"	155398	4
19	SCREW, SHLDR, SOC HD, 1/2X3/4	156177	2
20	SCREW, SOCKET HEAD CAP 3/8-16 X1	156602	8
21	KNOB, TRI PLASTIC MK-660 1-1/2	156770-02	2
22	TAG, SERIAL NUMBER, BLANK	157500-RW	1
23	POST, PIVOT (COMP)	159418	2
24	FRAME, PAN WELDMENT, SPCL	159419-SPCL	1
25	CASTING, RAIL BLOCK, MK-212-COM	159622	2
26	RAIL, 2 X 2 X 50	159641	1
27	MOUNT, SOGA MOTOR	159642	1
28	CUTTING HEAD	159853	1
29	STOP, RUBBER BUMPER	159855	2
30	SCREW, SET CUP 3/8-16 X 1"	159856	2
31	PLUG, 2 1/2 DIA RUBBER	159858	1
32	FOOT, RUBBER	159977	4
33	STAND OFF, BACKSTOP	160117	2
34	ASSY, 15" RIP GUIDE	160288	1
35	LABEL, MK-212, TITLE	160669	2
36	STOP, BACK	165685	1
37	CARRIER, CABLE	167430	1
38	ASSY, TABLE, MK-212	167762	2
39	BRACKET, CABLE CARRIER, POST MNT	168048	1
40	ASSY, SWITCH BOX, 30A, 212	172836-14	1

FIGURE 4 MK-212-4 TILE SAW WITH 12" CUTTING HEAD P/N 159414-SPCL

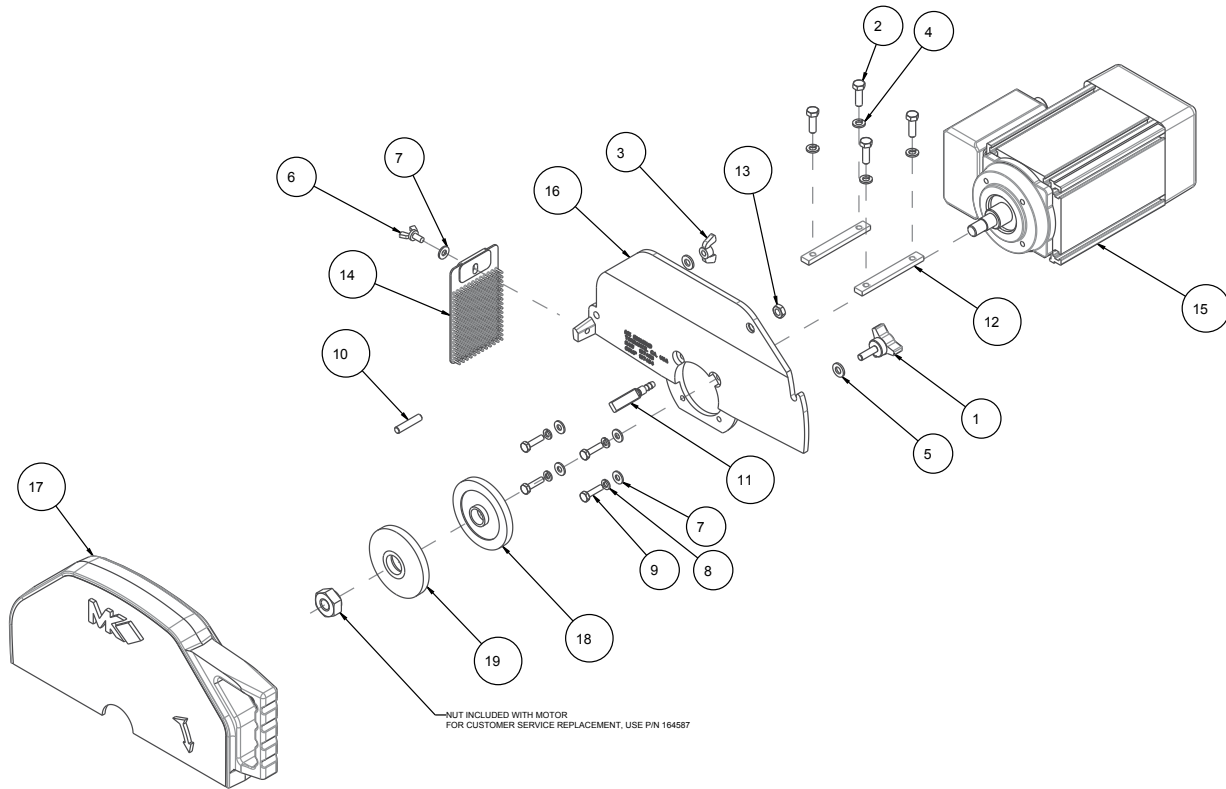
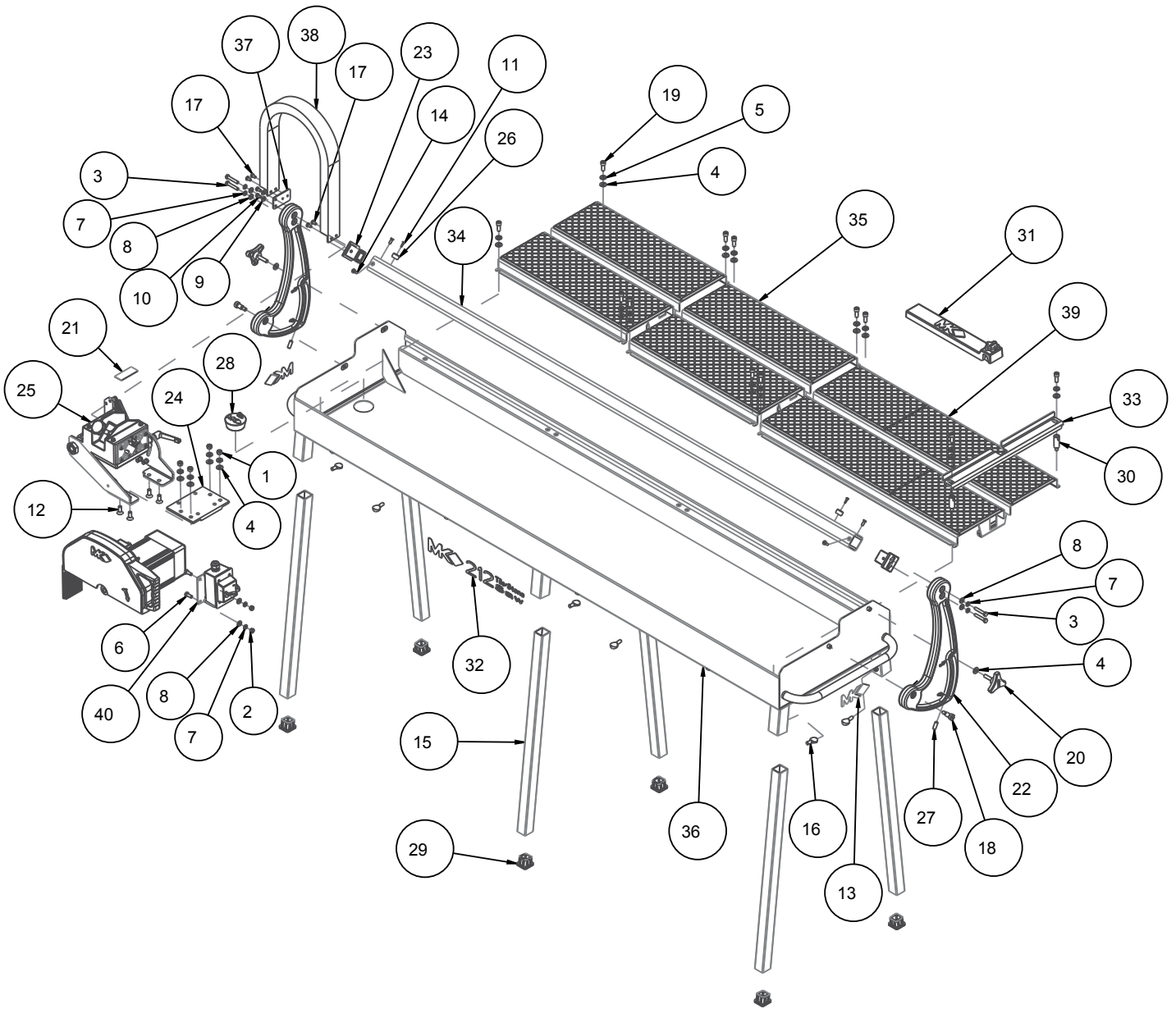


FIGURE 4 MK-212-4 TILE SAW WITH 12" CUTTING HEAD P/N 159414-SPCL

ITEM	DESCRIPTION	P/N	QTY.
1	KNOB, DAVIES, 5/16-18 X 1	151681	1
2	SCREW, HEX HD, 5/16-18 X 1	151743	4
3	NUT, WING, NYLK, 5/16-18	151746	1
4	WASHER, LOCK SPLIT, 5/16	151747	4
5	WASHER, FLAT, SAE, 5/16	151754	2
6	SCREW, WING, 1/4-20X1/2	151888	1
7	WASHER, FLAT, SAE, 1/4	151915	5
8	WASHER, LOCK, SPLIT, 1/4	152591	4
9	SCREW, HEX HD, TAP, 1/4-20X1	152676	4
10	STUD, 5/16-18 X 1-1/2"	153680	1
11	MANIFOLD, WATER	159854	1
12	KEY, MOTOR MOUNT	159859	2
13	NUT, 3/8-16 HEX	159863	1
14	GUARD, SPLASH	160310	1
15	MOTOR, 115V, 2HP SOGA	162078	1
16	GUARD, BLADE INNER - COMP	167494	1
17	GUARD, BLADE, OUTER-COMP	167496	1
18	FLANGE, BLADE, INNER, 12"	167539	1
19	FLANGE, BLADE OUTER	172648	1

FIGURE 5 MK-212-6 TILE SAW P/N 167882



ITEM	DESCRIPTION	P/N	QTY.
1	NUT, HEX 3/8-16	101188	4
2	NUT, HEX, 5/16 - 18	101196	2
3	SCREW, HEX HD, CAP, 5/16-18 X 1-3/4	150919	4
4	WASHER, 3/8 SAE FLAT	150923	18
5	WASHER, 3/8 SPLIT LOCK	150925	16

FIGURE 5 MK-212-6 TILE SAW P/N 167882

ITEM	DESCRIPTION	P/N	QTY.
6	SCREW, HEX HD, CAP, 5/16-18 X 3/4	151369	2
7	WASHER, LOCK, SPLIT, 5/16	151747	6
8	WASHER, FLAT, SAE, 5/16	151754	6
9	WASHER, FLAT, SAE, 1/4	151915	2
10	SCREW, 1/4-20 X 1/2 HEX HEAD	152608	2
11	SCREW, PHILP SELF TAP 10-24 X 5/8"	153681	2
12	SCREW, FLAT, HD, ALN, 3/8-16 X1	154019	4
13	LABEL, 1-3/4 X 5 MK LOGO	154335	2
14	SCREW, FLAT HD, 1/4-20X3/4	154657	4
15	LEG	155397	6
16	SCREW, THUMB 3/8-16 X 3/4"	155398	6
17	SCREW, PAN HD, CAP, 1/4-20 X 1/2	155452	4
18	SCREW, SHLDR, SOC HD, 1/2X3/4	156177	2
19	SCREW, SOCKET HEAD CAP 3/8-16 X1	156602	12
20	KNOB, TRI PLASTIC MK-660 1-1/2	156770-02	2
21	TAG, SERIAL NUMBER, BLANK	157500-RW	1
22	POST, PIVOT (COMP)	159418	2
23	RAIL BLOCK, MK-212-72 MOD	159622-MOD	2
24	MOUNT, SOGA MOTOR	159642	1
25	CUTTING HEAD	159853	1
26	STOP, RUBBER BUMPER	159855	2
27	SCREW, SET CUP 3/8-16 X 1"	159856	2
28	PLUG, 2 1/2 DIA RUBBER	159858	1
29	FOOT, RUBBER	159977	6
30	STAND OFF, BACKSTOP	160117	2
31	ASSY, 15" RIP GUIDE	160288	1
32	LABEL, MK-212, TITLE	160669	2
33	STOP, BACK	165685	1
34	RAIL	166887	1
35	ASSY, TABLE, MK-212	167762	2
36	FRAME, PAN	167883	1
37	BRACKET, CABLE CARRIER, POST MNT	168048	1
38	CARRIER, CABLE	168051	1
39	ASSY, TABLE, MK-212-6	168054	1
40	ASSY, SWITCH BOX, 30A, 212-6	172836-16	1

FIGURE 6 MK-212-6 TILE SAW P/N 167882

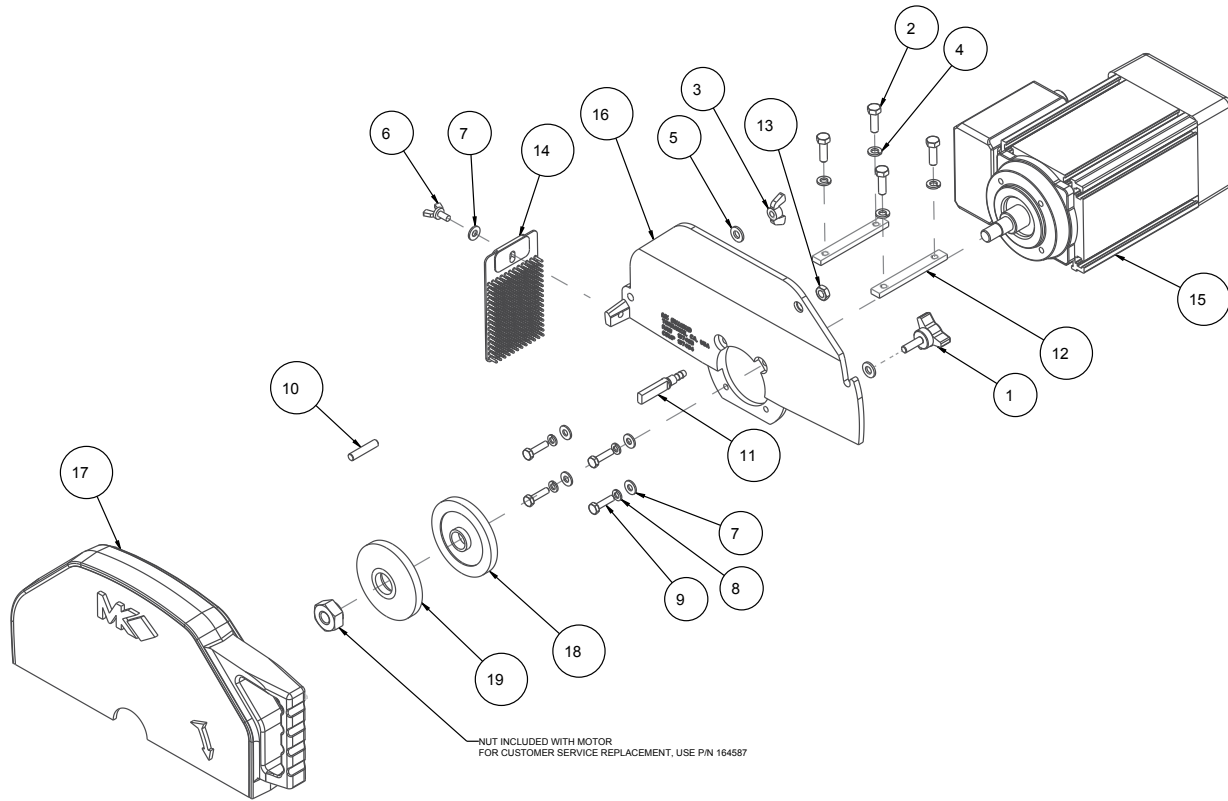


FIGURE 6 MK-212-6 TILE SAW P/N 167882

ITEM	DESCRIPTION	P/N	QTY.
1	KNOB, DAVIES, 5/16-18 X 1	151681	1
2	SCREW, HEX HD, 5/16-18X1	151743	4
3	NUT, WING, NYLK, 5/16-18	151746	1
4	WASHER, LOCK, SPLIT, 5/16	151747	4
5	WASHER, FLAT, SAE, 5/16	151754	2
6	SCREW, WING, 1/4-20X1/2	151888	1
7	WASHER, FLAT, SAE, 1/4	151915	5
8	WASHER, LOCK, SPLIT, 1/4	152591	4
9	SCREW, HEX HD, TAP, 1/4-20X1	152676	4
10	STUD, 5/16-18 X 1-1/2	153680	1
11	MANIFOLD, WATER	159854	1
12	KEY, MOTOR MOUNT	159859	2
13	NUT, 3/8-16 HEX	159863	1
14	GUARD, SPLASH	160310	1
15	MOTOR, 115V, 2HP SOGA	162078	1
16	GUARD, BLADE INNER - COMP	167494	1
17	GUARD, BLADE OUTER - COMP	167496	1
18	FLANGE, BLADE INNER 12"	167539	1
19	FLANGE, BLADE, OUTER	172648	1

FIGURE 7 MK-212 TILE/STONE SAW CUTTING HEAD P/N 159853

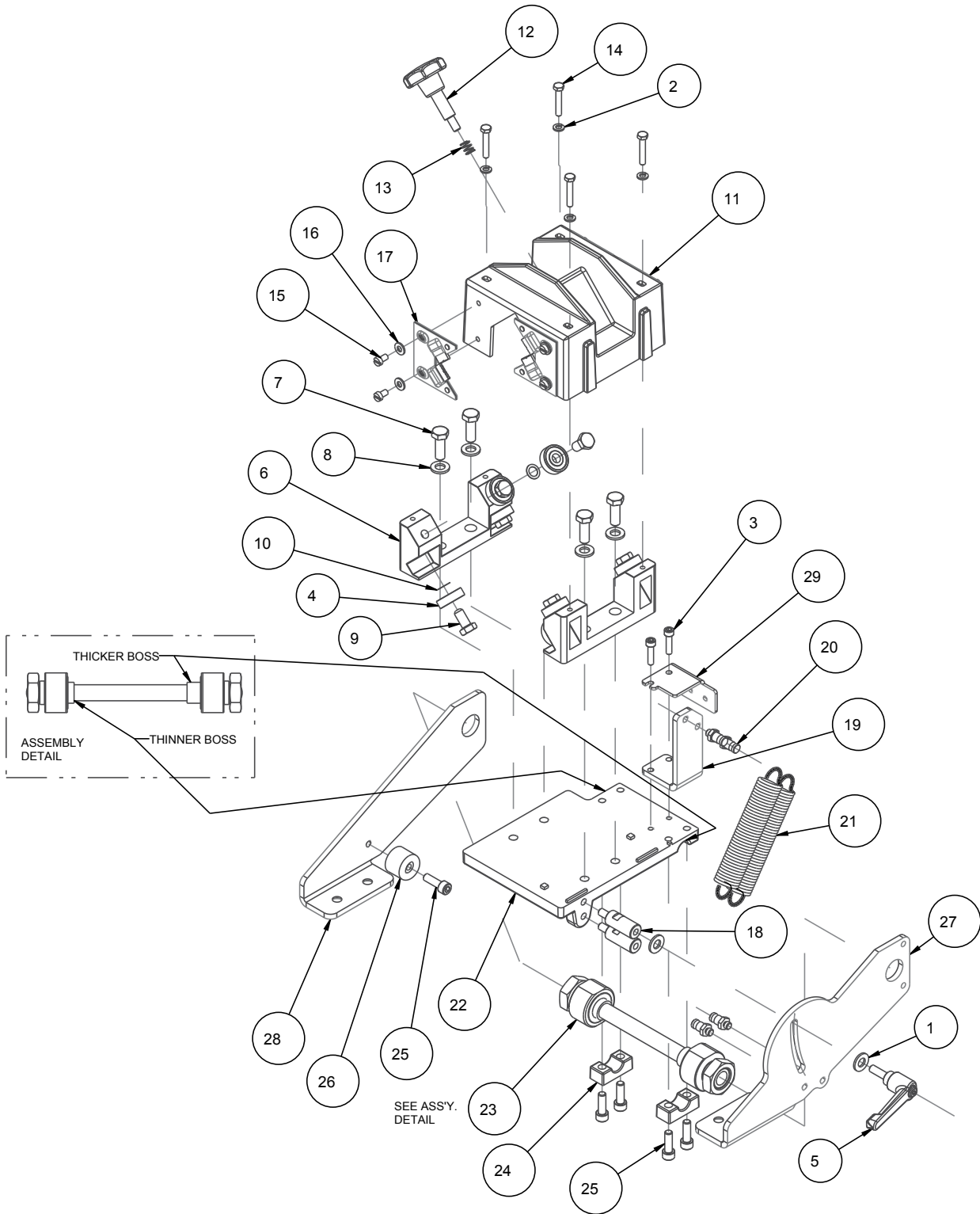
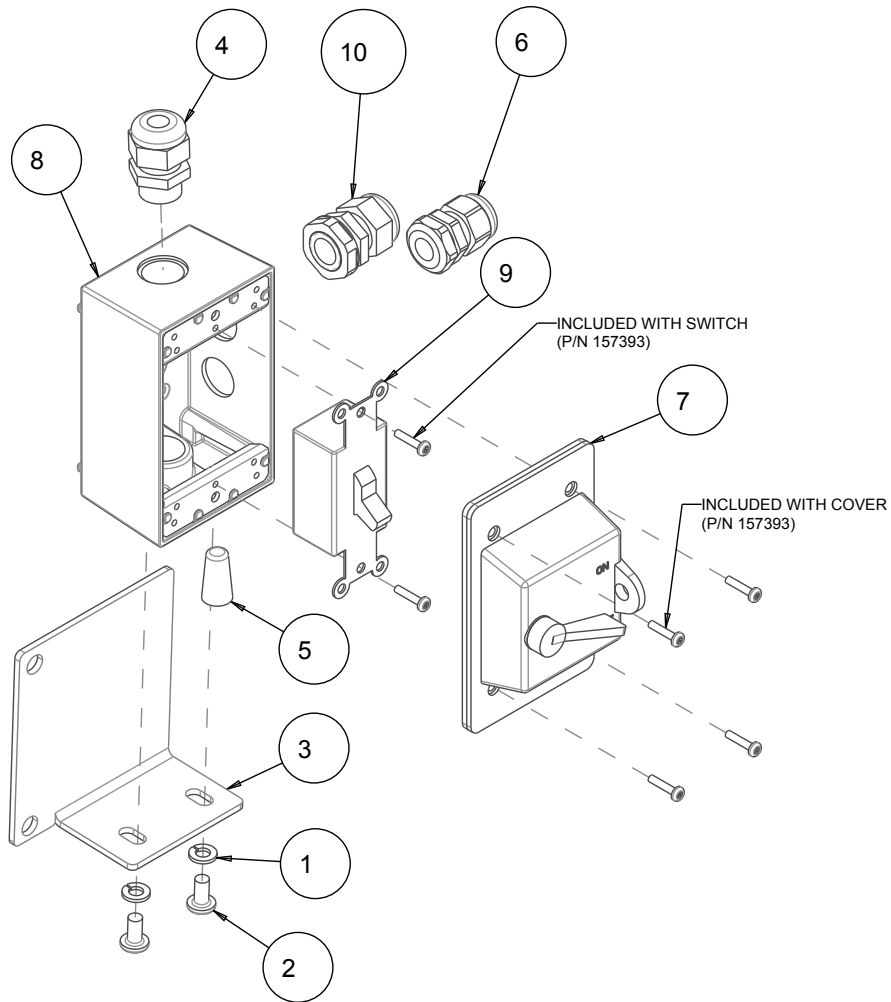


FIGURE 7 MK-212 TILE/STONE SAW CUTTING HEAD P/N 159853

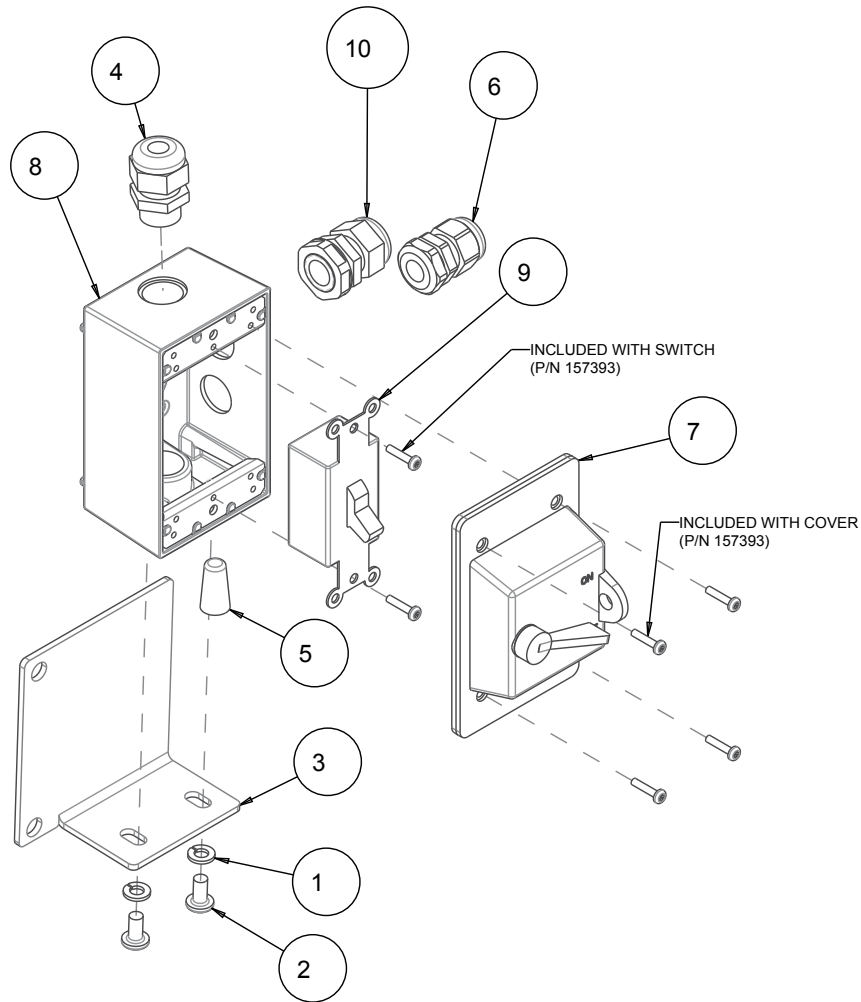
ITEM	DESCRIPTION	P/N	QTY.
1	WASHER, 3/8 SAE FLAT	150923	2
2	WASHER, LOCK, SPLIT, M6	158159	4
3	SCREW, SOC HD, CAP, M6X25MM	158268	2
4	BEARING, BALL, DEEP GROOVE	160097	8
5	KNOB, ADJUSTMENT	160184	1
6	BLOCK, BEARING RAIL (COMP)	160201	2
7	SCREW, HEX HEAD M10-1.5 X 30MM	160202	4
8	WASHER, FLAT, N, M10	160203	4
9	SCREW, HEX HEAD CAP M10 X20MM	160204	8
10	SHIM, 3/8 X 5/8 X .008 STEEL	160205	8
11	CASTING, COVER, BEARING COMP	160207	1
12	KNOB, LOCKING	160210	1
13	SPRING, COMPRESSION	160211	1
14	SCREW, HEX HEAD CAP, M6 X 30MM	160212	4
15	SCREW, PAN HEAD SLOT M6 X 10MM	160214	8
16	WASHER, FLAT M6	160215	8
17	ASSEMBLY, WIPER, MK-212	160216	4
18	STAND-OFF, BEARING SUPPORT BASE	160218	2
19	BRACKET, SPRING SUPPORT	160220	1
20	PIN, SPRING SUPPORT	160221	4
21	SPRING	160222	2
22	BASE, BEARING SUPPORT	160223	1
23	ASSY, CUTTING HEAD PIVOT AXLE	160224	1
24	CLAMP, PIVOT AXLE	160226	2
25	SCREW, SOCKET HEAD CAP M8 X 25MM	160227	5
26	STOP, RUBBER BUMPER	160228	1
27	ARM, MK-212 SWING (LEFT)	160238	1
28	ARM, MK-212 SWING (RIGHT)	160242	1
29	BRACKET, CABLE CARRIER, HD MNT	171877	1

FIGURE 8 MK-212-6 ASSY, SWITCH BOX 30V MK-212-4 P/N 172836-14



ITEM	DESCRIPTION	P/N	QTY.
1	WASHER, LOCK, SPLIT, 1/4	152591	2
2	SCREW, PAN HD, CAP, 1/4-20 X 1/2	155452	2
3	BRACKET, SWITCH MK-212	159864	1
4	CORD, MOTOR, 14/3 SJTW	159907	1
5	WIRE NUT 4#16 (YELLOW)	159968	1
6	CORD, PUMP, 16/3 SJTW, 120V	167302-4	1
7	COVER, 30A SWITCH, PLAS	171264-P	1
8	BOX, SWITCH, COMP MK-212	172835-1	1
9	SWITCH, 30A 120/240-277V 2HP	172840	1
10	CORD, POWER, MK-212 120V	172866	1

FIGURE 9 MK-212-6 ASSY, SWITCH BOX 30V MK-212-6 P/N 172836-16



ITEM	DESCRIPTION	P/N	QTY.
1	WASHER, LOCK, SPLIT, 1/4	152591	2
2	SCREW, PAN HD, CAP, 1/4-20 X 1/2	155452	2
3	BRACKET, SWITCH MK-212	159864	1
4	CORD, MOTOR, 14/3 SJTW	159907	1
5	WIRE NUT 4#16 (YELLOW)	159968	1
6	CORD, PUMP, 16/3 SJTW, 120V	167302	1
7	COVER, 30A SWITCH, PLAS	171264-P	1
8	BOX, SWITCH, COMP MK-212	172835-1	1
9	SWITCH, 30A 120/240-277V 2HP	172840	1
10	CORD, POWER, MK-212 120V	172866	1

FIGURE 10 WIRE DIAGRAM

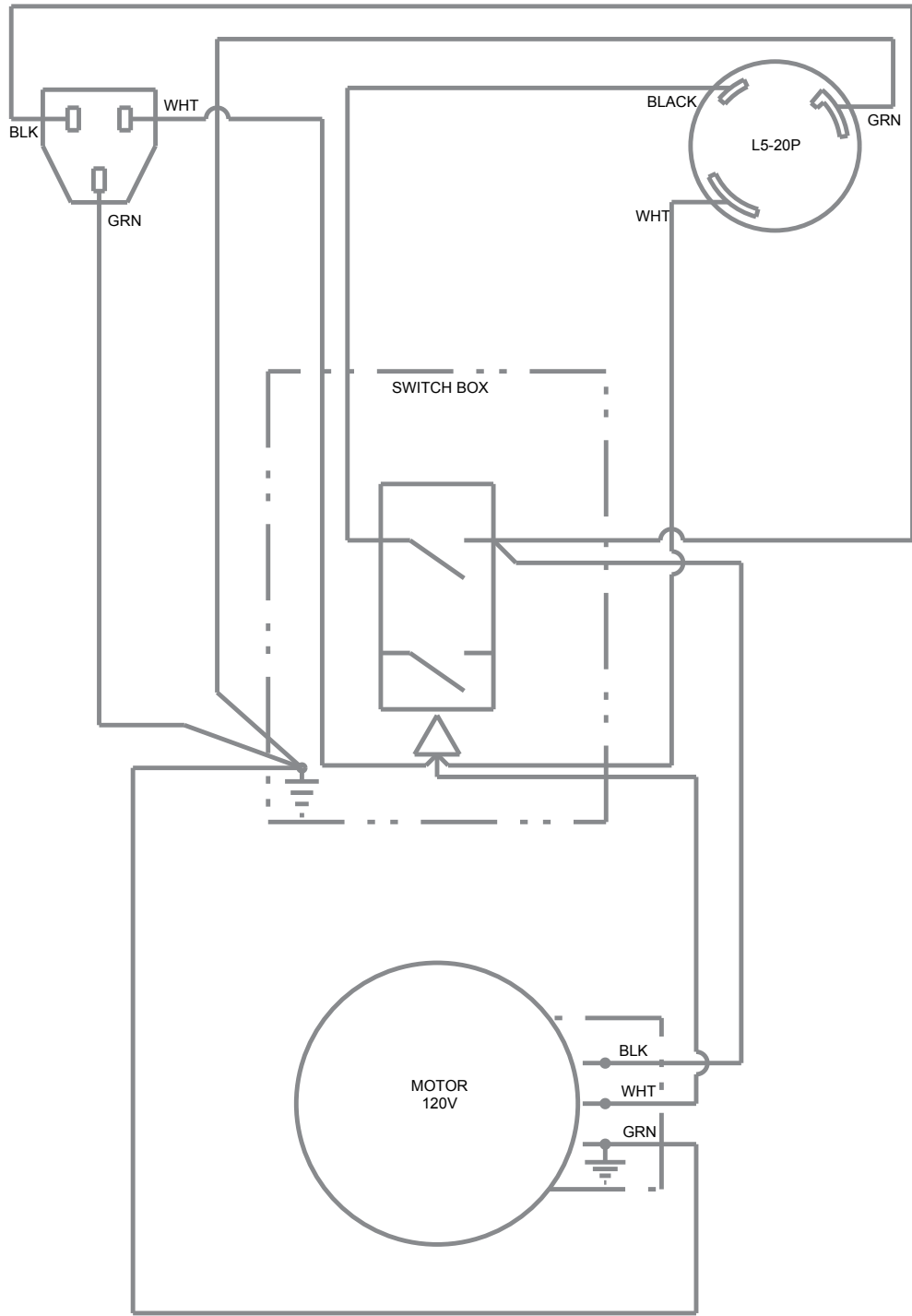
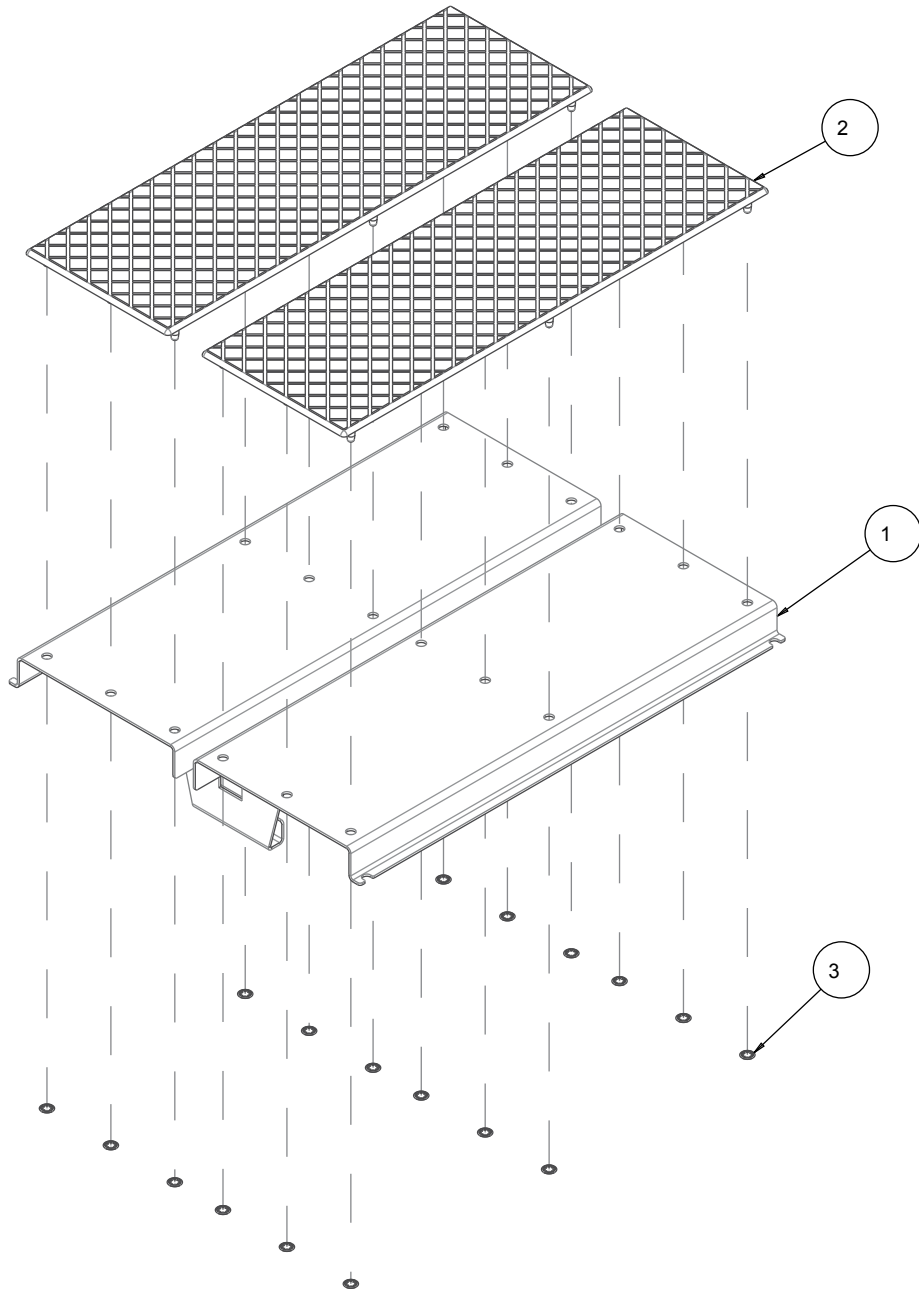
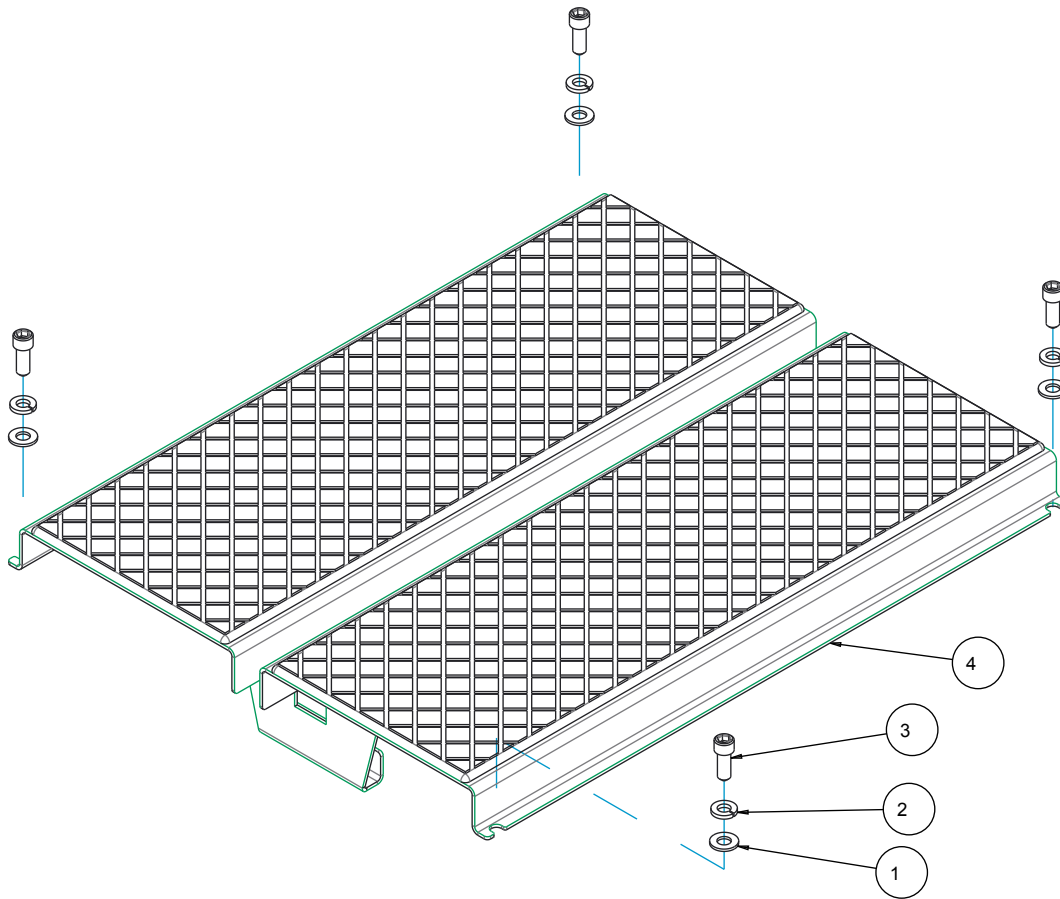


FIGURE 11 MK-212 ASSY, TABLE, MK-212 P/N 167762



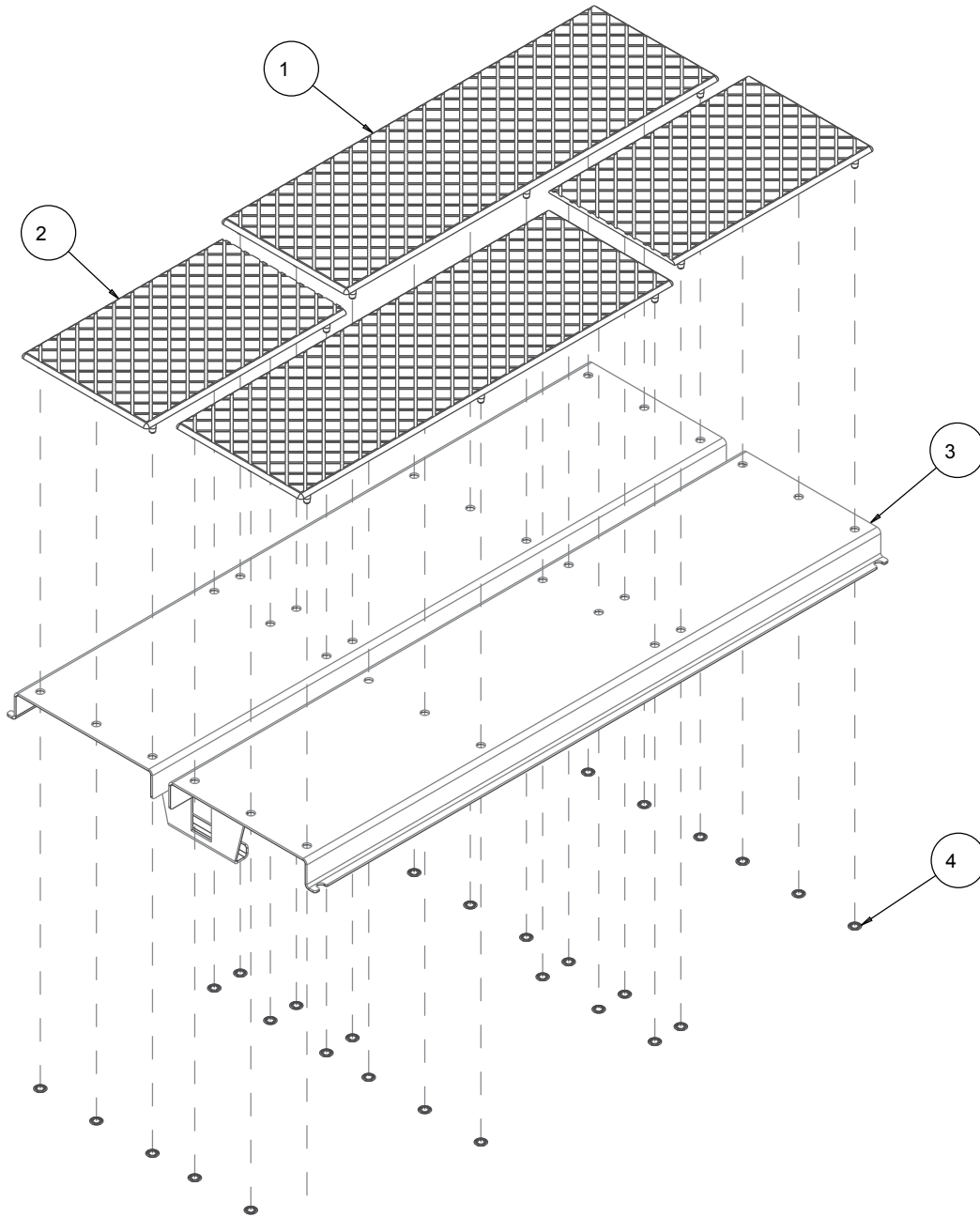
ITEM	DESCRIPTION	P/N	QTY.
1	TABLE	159420	1
2	MAT, TABLE, MK-212	166418	2
3	RING, RETAINING, 5/16 SHAFT	171878	18

FIGURE 12 MK-212 ASSY, TABLE, MK-212 P/N 167762-MK



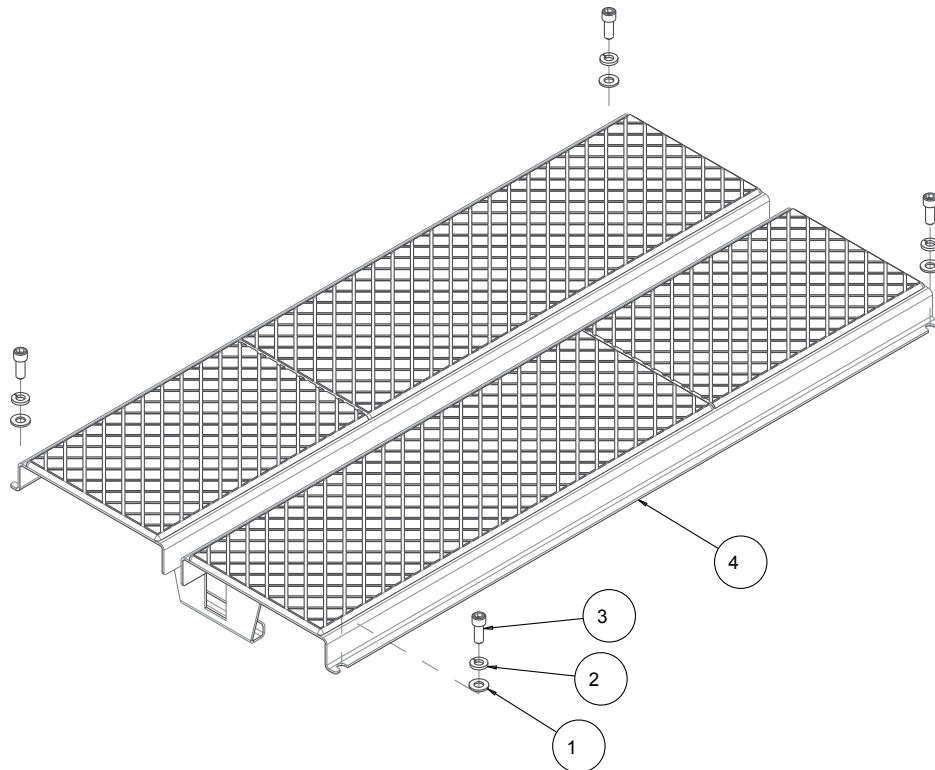
ITEM	DESCRIPTION	P/N	QTY.
1	WASHER, FLAT, SAE, 3/8	150923	4
2	WASHER, LOCK, SPLIT, 3/8	150925	4
3	SCREW, SOCKET HEAD CAP 3/8-16 X 1	156602	4
4	ASSY, TABLE, MK-212	167762	1

FIGURE 13 MK-212 ASSY, TABLE, MK-212 P/N 168054



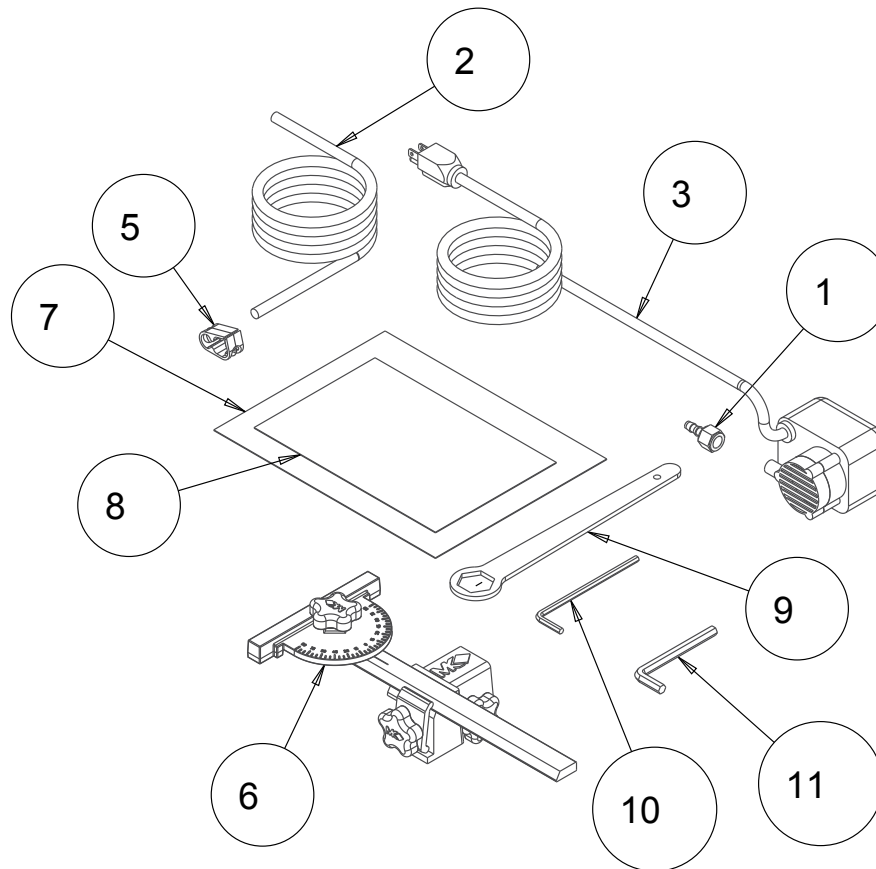
ITEM	DESCRIPTION	P/N	QTY.
1	MAT, TABLE, MK-212	166418	2
2	MAT, TABLE, MK-212-6, MOD	166890	2
3	TABLE, MK-212-6	167937	1
4	RING, RETAINING, 5/16 SHAFT	171878	30

FIGURE 14 MK-212-6, ASSY, TABLE P/N 168054-MK



ITEM	DESCRIPTION	P/N	QTY.
1	WASHER, FLAT, SAE, 3/8	150923	4
2	WASHER, LOCK, SPLIT, 3/8	150925	4
3	SCREW, SOCKET HEAD CAP 3/8-16 X 1	156602	4
4	ASSY, TABLE, MK-212-6	168054	1

FIGURE 15 MK-212 ACCESSORY KIT, MK-212 P/N 160688



ITEM	DESCRIPTION	P/N	QTY.
1	ADAPTER, PUMP TPF-22 1/4 X 1/4	128397	1
2	HOSE, VINYL, 1/4X 3/8 (6.0')	132951	1
3	PUMP, WATER 115V/60HZ UL/CSA	151271	1
4	CARTON, #13 SHIPPING (8' & 10)	153738	1
5	CLAMP, HOSE, 1/4-1/2 FLOW	154394	1
6	PROTRACTOR ASSEMBLY	159572	1
7	OWNER'S MANUAL, MK-212	159862	1
8	PARTS MANUAL, MK-212	159862-PM	1
9	WRENCH, BOX END, 30MM	159978	1
10	WRENCH, 5MM ALLEN	159979	1
11	WRENCH, 5/16" ALLEN	167679	1

NOTES

NOTES

**MK-212 SERIES SAW
PARTS LIST**



MK Diamond Products, Inc.

MK Diamond Products, Inc.
1315 Storm Parkway
Torrance, CA 90501

Toll-Free: (800) 841-5830
Phone: (310) 539-5221
Fax: (310) 539-5158
www.mkdiamond.com