

# PEARL®

## 17" PRO BUFFERS

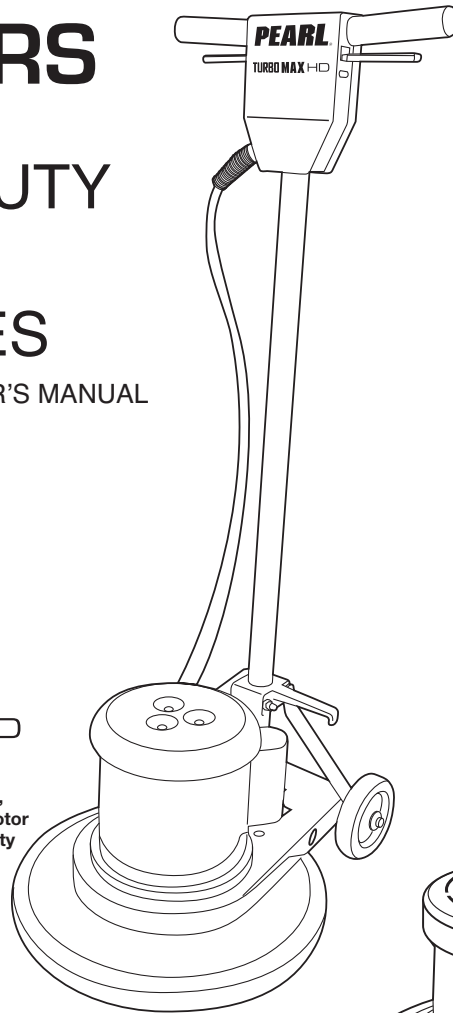
### HEAVY-DUTY FLOOR MACHINES

OWNER'S/OPERATOR'S MANUAL

**TURBOMAX** HD

#HEX1BFRHD

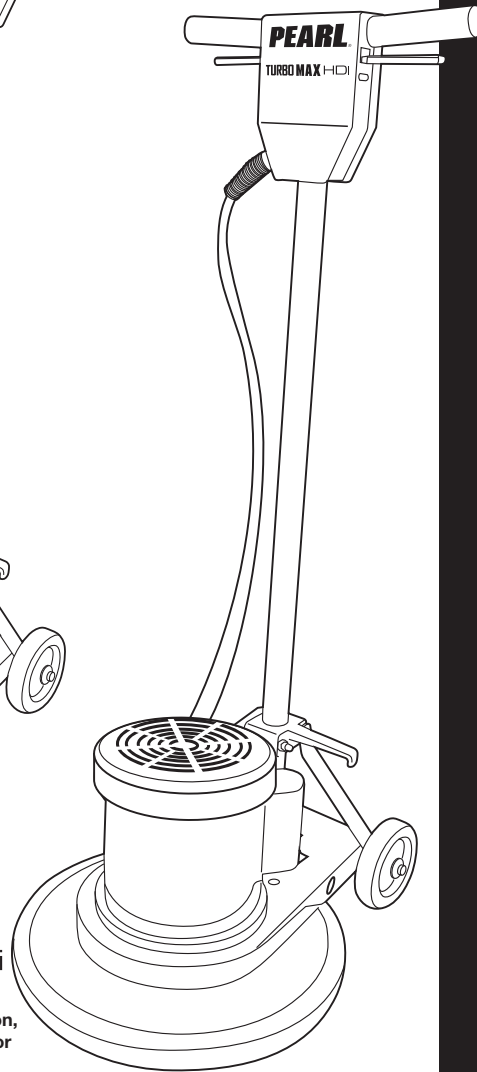
1-1/2 HP Induction,  
Dual Capacitor AC Motor  
and SDP (Severe Duty  
Planetary)



**TURBOMAX** HDi

#HEX1BFRHDi

1-1/2 HP *Sealed* Induction,  
Dual Capacitor AC Motor  
and SDP (Severe Duty  
Planetary)



**Operation | Care | Service**

**Caution!** Read Safety and General Instructions carefully before using for the first time.

REV. 3

PEARL ABRASIVE CO. FLOOR BUFFER

## WHEN THE MACHINE IS DELIVERED

Check the carton carefully for signs of rough handling. Remove the machine from the carton. If the machine is damaged, notify the carrier IMMEDIATELY and request an inspection. Be sure to keep the carton, packing inserts, packing lists and carrier's receipt until the inspector has verified your claim.

Pearl's liability ceases when the carrier picks up the shipment but our customer service staff will be glad to furnish any information needed in connection with the claim and will expedite repair of the machine.



## BEFORE OPERATING THE MACHINE

Read the manual carefully and completely before attempting to operate the unit. This manual has important information for the use and safe operation of the machine. Keep this manual handy at all times. This machine will assure years of satisfactory service if operated and maintained according to recommendations in this manual. If additional information is needed, please contact: 800-969-5561

All information and specifications printed in the manual and parts list are current at the time of printing; however, because of Pearl's policy of continual product development, we reserve the right to make changes at any time without notice.



### WARNING! To reduce the risk of fire, electric shock or injury:



- Do not operate the machine unless trained and authorized.
- Do not leave the machine when plugged in. Unplug from the outlet when not in use, before servicing, and when changing the brushes or pads.
- Use indoors only.
- Do not allow to be used as a toy. Close attention is necessary when used by or near children.
- Do not bypass or defeat the safety "lock-out lever."
- The machine was designed for use as per instruction and recommendations written in this manual. Any deviation from its proper use or purpose and the consequential damage that may occur is the sole responsibility of the end user.
- Do not use with damaged cord or plug. If the machine is not working as it should, or it has been dropped,

damaged, left outdoors or dropped into water, return it to an authorized service center.

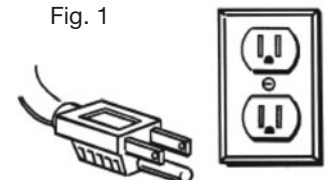
- Do not pull or carry by cord, use cord as handle, close a door on the cord or pull cord around sharp edges or corners. Do not run machine over cord. Keep cord away from heated surfaces.
- Do not unplug by pulling on cord. To unplug, grasp the plug, not the cord.
- Do not handle plug or appliance with wet hands.
- Make sure the machine is plugged into an electrical outlet with the same voltage and frequency rating as shown on the nameplate of the machine. Do not attempt to plug a 115- volt machine into a 230- volt outlet.
- Do not immerse or use this machine in standing water. Such use can cause electric shock.
- Keep the electrical supply cord from contacting the rotating brush or drive block.
- Do not expose machine to freezing temperatures.
- To avoid electric shock, do not expose the unit to rain. Store indoors only.
- Connect to a properly grounded outlet only. See "Grounding Instructions."
- Turn off all controls before unplugging.
- When using an extension cord, use a 3 conductor grounding cord, 12 gauge wire or heavier. Do not use more than 25' extension cord.
- Do not put any object into openings. Do not use with any opening blocked. Keep free of dust, lint, hair and anything that may reduce air flow.
- Do not operate machine in flammable or explosive areas.
- All servicing of Pearl's equipment should be performed by Pearl authorized service center.
- Keep hair, loose clothing, fingers and all parts of body away from openings and moving parts.
- Use extra care when cleaning on stairs. When servicing machine, use manufacturer's supplied or approved replacement parts.

FAILURE TO COMPLY WITH THE ABOVE WARNING INSTRUCTIONS WILL VOID THE WARRANTY.

## GROUNDING INSTRUCTIONS

Machine must be grounded. If it should malfunction or breakdown, grounding provides a path of least

Fig. 1



resistance for electrical current to reduce the risk of electric shock. This machine is equipped with a cord having an equipment-grounding plug (Fig. 1). The plug must be plugged into an appropriate outlet that is properly installed in accordance with all local codes and ordinances. Do not remove ground pin; if missing, replace plug before use.

## PREPARING THE MACHINE FOR OPERATION

Your floor machine will operate in a wide variety of hard floors and carpet cleaning applications. Consult with your local dealer or Pearl Customer Service to select the correct accessories for the job you are going to perform.

### HEXPLATE™, BRUSH, PAD DRIVER INSTALLATION

Lock the handle in the upright position and tip the machine back so it rests on the handle and wheels. Fit the three slots of the clutch plate in the back of the brush or pad driver over the three lugs of the drive plate. Push it firmly into position and turn it counterclockwise until it locks in place (Fig. 2).

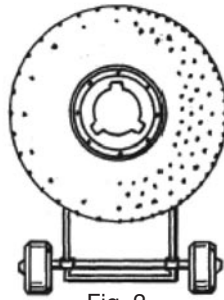


Fig. 2

To remove: Tip the machine back so it rests on the handle and wheels. Turn the brush or pad driver clockwise until it disengages and lifts off. Do not store the machine with the brush or pad drivers installed.

### PAD INSTALLATION

To install pad, tilt the machine back on wheels until machine is resting on handle. Center the pad on the pad holder and insert pad center lock by twisting clockwise. Make sure the center lock is tight.

To remove: Twist the center lock counterclockwise.

### SOLUTION TANK INSTALLATION

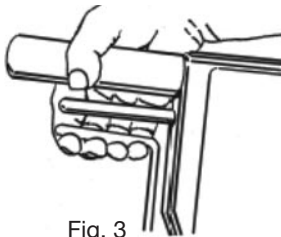


Fig. 3

Position the tank in front of the floor machine with the water release lever of the tank resting below the floor machine lever. There should be enough room for you to pull the tank lever without accidentally pulling the floor machine lever (Fig. 3). Attach the tank to the machine using the two "V" bolts already included on the tank. (Fig. 4).

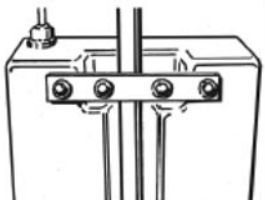


Fig. 4



The base of the tank has a solution hose connected to it on one end. Insert the other end of the solution hose in the motor frame (Fig. 5).

Fig. 5

## MACHINE OPERATION

1. Install the pad driver and pad, brush or attachment.
2. Plug in machine.
3. Lower the handle to the desired operating position.
4. Place both hands on the handle grips with your fingers around the on/off lever which extends from one side to the other underneath the handle grips.

5. The safety "lock-out" lever is located underneath the right side handle grip and switch lever. To unlock the "lock-out" lever, use your right hand forefinger to press the lever down toward the back of the switch box (Fig. 6).

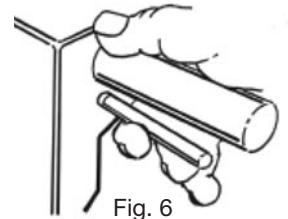


Fig. 6

6. While still pressing the lever, pull the on/off switch lever to start the machine, then release the "lock-out" lever. The "lock-out" lever will automatically engage when you release the on/off switch lever.

## TO MANEUVER YOUR FLOOR MACHINE

1. Raise the handle slightly and the machine will go to the right. The higher you raise it, the faster it will go.
2. Lower the handle and the machine will go left. The more you lower it, the faster it will go.
3. Practice on a smooth surface until you gain experience in operating the unit.

## TO RE-ADJUST THE HANDLE-LOCK MECHANISM

Unlock the handle and place it in the upright position. Tighten the adjusting nuts until there is a slight drag when the handle is raised or lowered (Fig. 7).

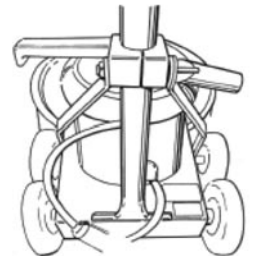


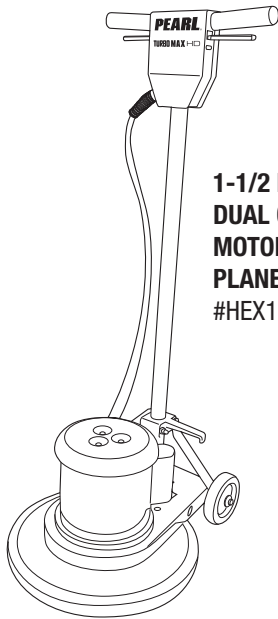
Fig. 7

## CLEAN UP & STORAGE

1. Unplug and wrap it under the cord hook and around the left side handle grip. Clean the cord and inspect it for cuts, gashes and loose prongs.
2. Wipe down the machine and store in clean dry place.

# TURBO MAX HD

## SPECS AND REPLACEMENT PARTS LIST



**1-1/2 HP INDUCTION,  
DUAL CAPACITOR AC  
MOTOR AND HEAVY DUTY  
PLANETARY HEAD  
#HEX1BFRHD**

**Dual metal switch levers,  
left or right hand operation**

**All steel and stainless steel  
construction**

**Optimal weight delivers the  
right resistance against the  
floor to get the job done better  
and faster**

**Extremely durable and  
convenient handle adjustment  
mechanism is foot operated**

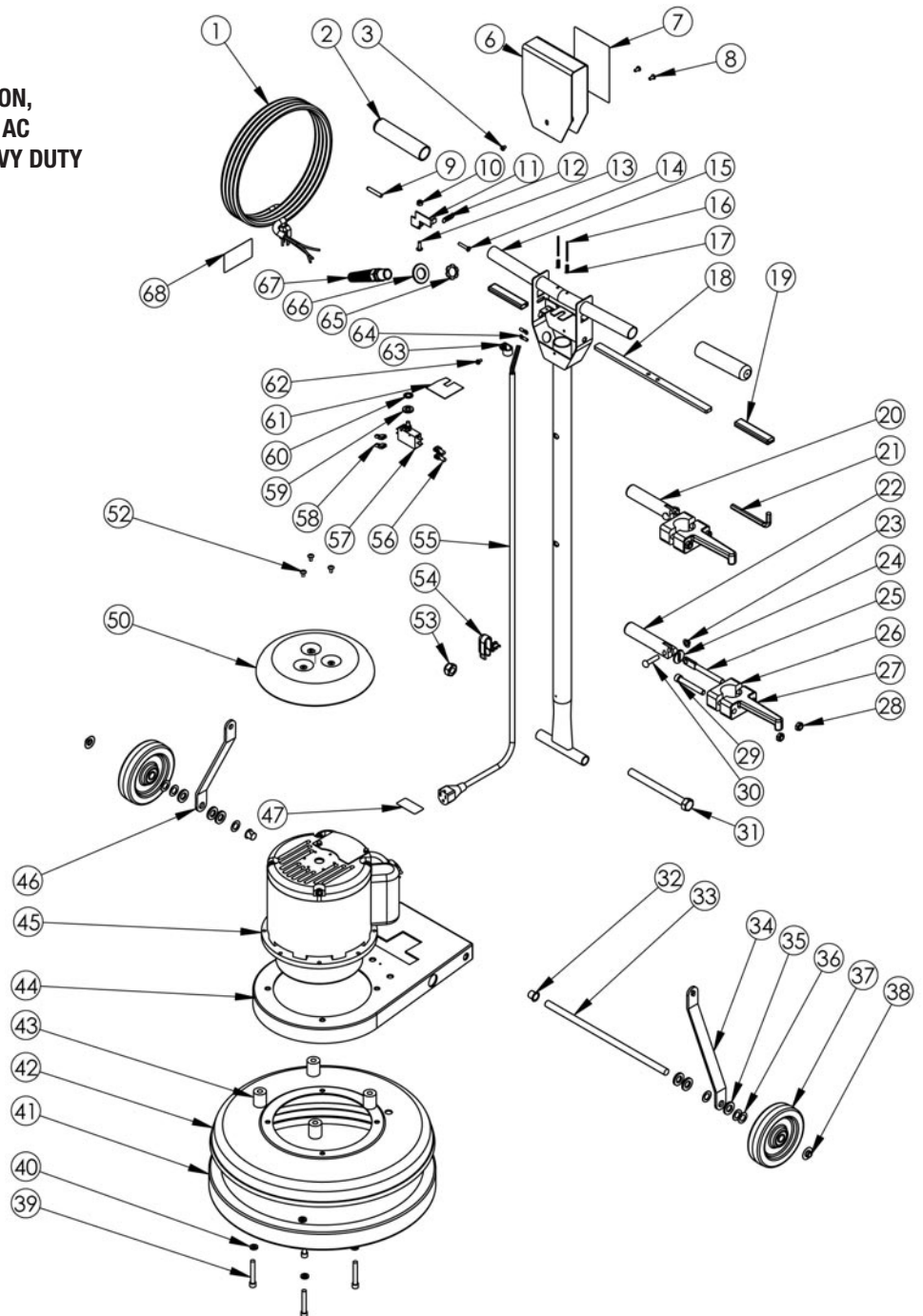
**5" non-marking wheels**

**Non-marking PVC bumper  
prevents marking furniture  
or walls**

**Assembled in the U.S.A.**

### SPECIFICATIONS:

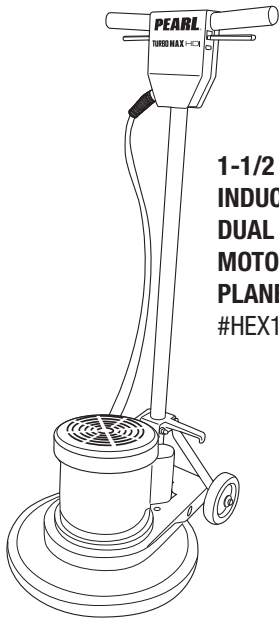
- 17" Head
- 175 RPM
- 1.5 HP 66 frame motor
- 14.4 amps
- 110/115v motor
- 50' Power cord
- Triple planetary steel gears
- 95 lbs.
- Shipping Weight: 112 lbs.
- Shipping dimensions:  
48"H x 26.5"L x 23"W
- One-year limited warranty



| <i>PART NUMBER</i> | <i>PART NAME</i>                                      | <i>QTY</i> |
|--------------------|---|------------|
| 1                  | PAB11487 Power Cord, 14-3, 50 FT, SJTW                | 1          |
| 2                  | PAK11498 Grip   | 2          |
| 3                  | PAC11528 Screw, 10-32 X .25 in                        | 1          |
| 6                  | PAD11496B Switch Box Cover, Black                     | 1          |
| 7                  | PAH11493 Label, Safety, Floor Machine                 | 1          |
| 8                  | PAC11529 Screw, 10-32 X .375 in                       | 2          |
| 9                  | PAK11519 Lever Grip, Lockout, Black                   | 1          |
| 10                 | PAC00278 Locknut, 10-32, Nylon, SS                    | 1          |
| 11                 | PAD11494 Lockout Bracket                              | 1          |
| 12                 | PAD11524 Spring, Lockout                              | 1          |
| 13                 | PAC90007 Screw, 10-32 X .625 Phillips, Truss Head, SS | 1          |
| 14                 | PAC11491 Screw, 10-32 X 1 in, SS                      | 1          |
| 15                 | PAD11479 Handle, Chrome, Floormachine                 | 1          |
| 16                 | PAC00306 Roll Pin, .125 X 1.75                        | 2          |
| 17                 | PAD11523 Spring, Trigger                              | 2          |
| 18                 | PAD11495 Trigger, Zinc Plated                         | 1          |
| 19                 | PAK11520 Lever Grip, Trigger, Black                   | 2          |
| 20                 | PA11507A Assembled Locking Handle, Cord Hook          | 1          |
| 21                 | PAC11619 Allen Wrench, .31 in                         | 1          |
| 22                 | PAD11497 Handle, Locking Clamp                        | 1          |
| 23                 | PAC11538 Cap Nut, .31 in, Push-On                     | 1          |
| 24                 | PAC00259 Washer, Slotted, Zinc                        | 1          |
| 25                 | PAC11536 Spade Bolt, .375-16 X 4 in                   | 1          |
| 26                 | PAD11507 Cord Hook Clamp                              | 1          |
| 27                 | PAD11507-2 Cord Hook Body                             | 1          |
| 28                 | PAC11558 Locknut, Black Oxide, Thin                   | 2          |
| 29                 | PAC11502 Socket Cap Screw, .375-16 X 2.5 in           | 1          |
| 30                 | PAC11537 Dowel Pin, .31 X 1.5 in                      | 1          |
| 31                 | PAC13101 Screw, Hex Cap, M14-2.0                      | 1          |
| 32                 | PAK00674 Bushing, .50 in, Nylon                       | 2          |
| 33                 | PAD11510 Axle, Floor Machine                          | 1          |
| 34                 | PAD11482 Handle Brace, Right, Black                   | 1          |
| 35                 | PAC00240 Washer, Shoulder, Nylon                      | 6          |
| 36                 | PAC11559 Washer, .515 X .875 X .032                   | 6          |

| <i>PART NUMBER</i> | <i>PART NAME</i>                              | <i>QTY</i> |
|--------------------|---|------------|
| 37                 | PAG11943 Wheel, 5 in Saturn                   | 2          |
| 38                 | PAC02305 Cap Nut, .5in Push-on                | 2          |
| 39                 | PAC11501 Socket Cap Screw, .31 - 18           | 4          |
| 40                 | PAC00251 Lockwasher, .31, Split               | 4          |
| 41                 | PAE11477 Bumper, 17 in Floor Machine          | 1          |
| 42                 | PAD11485B Brush Cover, 17 in, Black           | 1          |
| 43                 | PAK11521 Spacer, Base, Floor Machine          | 4          |
| 44                 | PAD11483 Frame, Motor, Black                  | 1          |
| 45                 | PAG11468 Motor W-Gearbox, 1.5 HP              | 1          |
| 46                 | PAD11481 Handle Brace, Left, Black            | 1          |
| 47                 | PAH10976-1 Label, UL STD 561-507              | 1          |
| 50                 | PAD11490B Drip Cover, Black                   | 1          |
| 52                 | PAC11916 Screw, 10-32 X .375 Phillips         | 3          |
| 53                 | PAC13100 Nut, M14-2.0 Nylon Insert            | 1          |
| 54                 | PAB10734 Strain Relief, Handle                | 1          |
| 55                 | PAB11513 Cord, Handle, 14-3 SJTW              | 1          |
| 56                 | PAB11762 Terminal Lug, Nylon, Female          | 2          |
| 57                 | PAB11465 Switch, DPST, Pushbutton             | 1          |
| 58                 | PAB00177 Terminal Lug, Female, QD, .25 X .032 | 2          |
| 59                 | PAC00252 Washer, .375 in, Flat                | 1          |
| 60                 | PAC11541 Washer, .375 in, Star                | 1          |
| 61                 | PAB11518 Switch Insulation                    | 1          |
| 62                 | PAC00284 Screw, 10-32 X .375 Ground           | 1          |
| 63                 | PAB00187 Cable Clamp, Nylon, .43 in.          | 1          |
| 64                 | PAB00180-10-3 Ring Terminal, #10 Center       | 2          |
| 65                 | PAB11505 Strain Relief Nut, Metal             | 1          |
| 66                 | PAC11560 Washer, .93 ID X 1.5 OD              | 1          |
| 67                 | PAB11504 Strain Relief, Metal                 | 1          |
| 68                 | PAH02548-2 Label, Important, Cord             | 1          |

# TURBO MAX HDi SPECS AND REPLACEMENT PARTS LIST



**1-1/2 HP SEALED  
INDUCTION,  
DUAL CAPACITOR AC  
MOTOR AND HEAVY DUTY  
PLANETARY HEAD  
#HEX1BFRHDI**

**Dual metal switch levers,  
left or right hand operation**

**All steel and stainless steel  
construction**

**Optimal weight delivers the  
right resistance against the  
floor to get the job done better  
and faster**

**Extremely durable and  
convenient handle adjustment  
mechanism is foot operated**

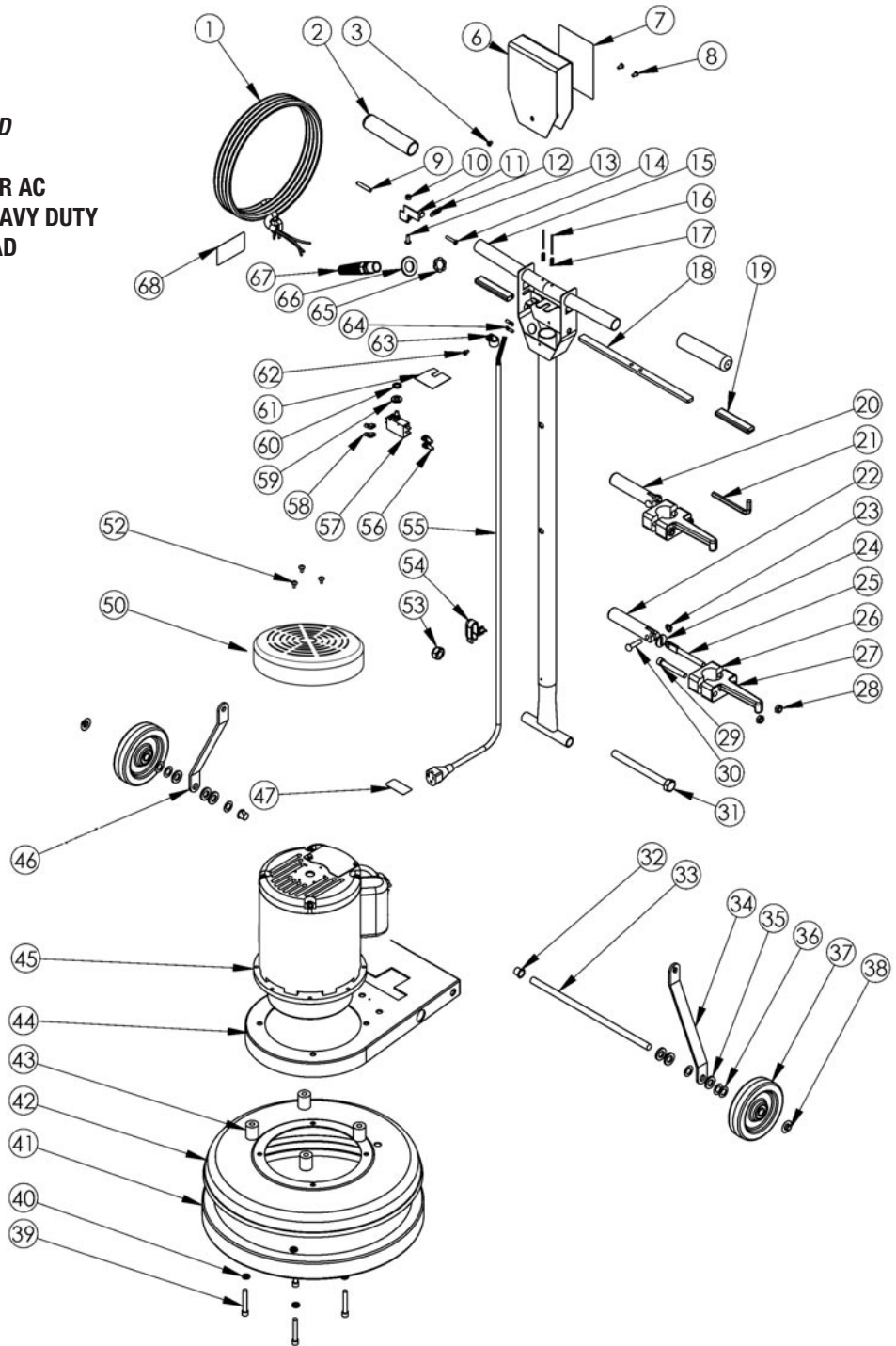
**5" non-marking wheels**

**Non-marking PVC bumper  
prevents marking furniture  
or walls**

**Assembled in the U.S.A.**

**SPECIFICATIONS:**

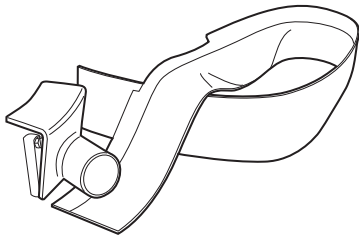
- 175 RPM
- 1.5 HP, TEFC motor
- 13 amps
- 110/115v motor
- 50' Power cord
- Triple planetary steel gears
- 113 lbs.
- Shipping Weight: 130 lbs.
- Shipping dimensions:  
48"H x 26.5"L x 23"W
- One-year limited warranty



| <i>PART NUMBER</i> | <i>PART NAME</i> | <i>QTY</i>                                   |   |
|--------------------|------------------|--|---|
| 1                  | PAB11487         | Power Cord, 14-3, 50 FT, SJTW                | 1 |
| 2                  | PAK11498         | Grip   | 2 |
| 3                  | PAC11528         | Screw, 10-32 X .25 in                        | 1 |
| 6                  | PAD11496B        | Switch Box Cover, Black                      | 1 |
| 7                  | PAH11493         | Label, Safety, Floor Machine                 | 1 |
| 8                  | PAC11529         | Screw, 10-32 X .375 in                       | 2 |
| 9                  | PAK11519         | Lever Grip, Lockout, Black                   | 1 |
| 10                 | PAC00278         | Locknut, 10-32, Nylon, SS                    | 1 |
| 11                 | PAD11494         | Lockout Bracket                              | 1 |
| 12                 | PAD11524         | Spring, Lockout                              | 1 |
| 13                 | PAC90007         | Screw, 10-32 X .625 Phillips, Truss Head, SS | 1 |
| 14                 | PAC11491         | Screw, 10-32 X 1 in, SS                      | 1 |
| 15                 | PAD11479         | Handle, Chrome, Floormachine                 | 1 |
| 16                 | PAC00306         | Roll Pin, .125 X 1.75                        | 2 |
| 17                 | PAD11523         | Spring, Trigger                              | 2 |
| 18                 | PAD11495         | Trigger, Zinc Plated                         | 1 |
| 19                 | PAK11520         | Lever Grip, Trigger, Black                   | 2 |
| 20                 | PA11507A         | Assembled Locking Handle, Cord Hook          | 1 |
| 21                 | PAC11619         | Allen Wrench, .31 in                         | 1 |
| 22                 | PAD11497         | Handle, Locking Clamp                        | 1 |
| 23                 | PAC11538         | Cap Nut, .31 in, Push-On                     | 1 |
| 24                 | PAC00259         | Washer, Slotted, Zinc                        | 1 |
| 25                 | PAC11536         | Spade Bolt, .375-16 X 4 in                   | 1 |
| 26                 | PAD11507         | Cord Hook Clamp                              | 1 |
| 27                 | PAD11507-2       | Cord Hook Body                               | 1 |
| 28                 | PAC11558         | Locknut, Black Oxide, Thin                   | 2 |
| 29                 | PAC11502         | Socket Cap Screw, .375-16 X 2.5 in           | 1 |
| 30                 | PAC11537         | Dowel Pin, .31 X 1.5 in                      | 1 |
| 31                 | PAC13101         | Screw, Hex Cap, M14-2.0                      | 1 |
| 32                 | PAK00674         | Bushing, .50 in, Nylon                       | 2 |
| 33                 | PAD11510         | Axle, Floor Machine                          | 1 |
| 34                 | PAD11482         | Handle Brace, Right, Black                   | 1 |
| 35                 | PAC00240         | Washer, Shoulder, Nylon                      | 6 |
| 36                 | PAC11559         | Washer, .515 X .875 X .032                   | 6 |

| <i>PART NUMBER</i> | <i>PART NAME</i> | <i>QTY</i>                           |   |
|--------------------|------------------|--------------------------------------|---|
| 37                 | PAG11943         | Wheel, 5 in Saturn                   | 2 |
| 38                 | PAC02305         | Cap Nut, .5in Push-on                | 2 |
| 39                 | PAC11501         | Socket Cap Screw, .31 - 18           | 4 |
| 40                 | PAC00251         | Lockwasher, .31, Split               | 4 |
| 41                 | PAE11477         | Bumper, 17 in Floor Machine          | 1 |
| 42                 | PAD11485B        | Brush Cover, 17 in, Black            | 1 |
| 43                 | PAK11521         | Spacer, Base, Floor Machine          | 4 |
| 44                 | PAD11483         | Frame, Motor, Black                  | 1 |
| 45                 | PA11476A         | HD Motor W-Gearbox, 1 .5 HP          | 1 |
| 46                 | PAD11481         | Handle Brace, Left, Black            | 1 |
| 47                 | PAH10976-1       | Label, UL STD 561-507                | 1 |
| 50                 | PAD11490B        | Drip Cover, Black                    | 1 |
| 52                 | PAC11916         | Screw, 10-32 X .375 Phillips         | 3 |
| 53                 | PAC13100         | Nut, M14-2.0 Nylon Insert            | 1 |
| 54                 | PAB10734         | Strain Relief, Handle                | 1 |
| 55                 | PAB11513         | Cord, Handle, 14-3 SJTW              | 1 |
| 56                 | PAB11762         | Terminal Lug, Nylon, Female          | 2 |
| 57                 | PAB11465         | Switch, DPST, Pushbutton             | 1 |
| 58                 | PAB00177         | Terminal Lug, Female, QD, .25 X .032 | 2 |
| 59                 | PAC00252         | Washer, .375 in, Flat                | 1 |
| 60                 | PAC11541         | Washer, .375 in, Star                | 1 |
| 61                 | PAB11518         | Switch Insulation                    | 1 |
| 62                 | PAC00284         | Screw, 10-32 X .375 Ground           | 1 |
| 63                 | PAB00187         | Cable Clamp, Nylon, .43 in.          | 1 |
| 64                 | PAB00180-10-3    | Ring Terminal, #10 Center            | 2 |
| 65                 | PAB11505         | Strain Relief Nut, Metal             | 1 |
| 66                 | PAC11560         | Washer, .93 ID X 1.5 OD              | 1 |
| 67                 | PAB11504         | Strain Relief, Metal                 | 1 |
| 68                 | PAH02548-2       | Label, Important, Cord               | 1 |

## ACCESSORIES (Optional)



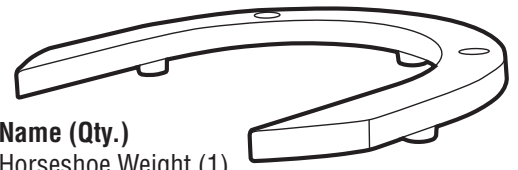
**Name (Qty.)**  
 BUFVAC Dust  
 Containment System (1)

**Part Number**  
 BUFVAC1



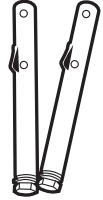
**Name (Qty.)**  
 Solution Tank (1)

**Part Number**  
 BUFTNK02



**Name (Qty.)**  
 Horseshoe Weight (1)

**Part Number**  
 HEX21LBS



**Name (Qty.)**  
 Weight Posts (2)

**Part Number**  
 HP03PIN

### PEARL LIMITED WARRANTY

Every PEARL ABRASIVE CO. tool is thoroughly inspected and tested before leaving the factory. It is warranted to be free of defects in materials and workmanship for a period of ONE YEAR from the date of original purchase. Pearl will repair or (at our opinion) replace a product, or part thereof, found by PEARL ABRASIVE CO. to be defective, provided the defective product is returned to PEARL ABRASIVE CO., freight pre-paid, with proof of purchase.

**RG# NUMBER IS REQUIRED.** Prior to the return of any product or part, a Return Goods Authorization number must be obtained from PEARL ABRASIVE CO. by fax (562) 928-3857 or calling (800) 969-5561. The owner's name, address, phone number, as well as the serial number of the product, proof of purchase, and a brief statement detailing the nature of the claimed defect, are required for authorization.

**This Warranty does not apply where:**

- repairs have been made or attempted by others
- repairs are required because of normal wear and tear
- the tool has been abused, misused or improperly maintained
- alterations have been made to the tool
- the product is used in a manner or with a blade not recommended by the manufacturer

**In no event shall Pearl Abrasive Co. be liable for any indirect, incidental or consequential damages from the sale or use of the equipment. This disclaimer applies both during and after the term of warranty.**

**Pearl Abrasive Co. disclaims liability for any implied warranties, including implied warranties of "merchantability" and "fitness for a specific purpose", after the one year term of this warranty.**

This warranty gives you specific legal rights, and you may also have other rights which vary from state to state. Some states do not allow the exclusion or limitation of incidental or consequential damages, so the above limitation or exclusion may not apply to you. Some states do not allow limitation on how long an implied warranty lasts, so the above limitation may not apply to you.

All parts replaced under warranty will be considered as part of the original product and any warranty on these parts will expire coincidentally with the original product warranty.

This warranty supersedes all previous PEARL ABRASIVE product warranties.

# PEARL®

**CORPORATE OFFICE: SO. CALIFORNIA • USA**  
 4900 ZAMBRANO ST., COMMERCE, CA 90040-0031  
 562-927-5561 • FAX 562-928-3857  
**Toll Free: 800-969-5561**  
**www.pearlabrasive.com**

**GEORGIA • USA**  
 3950 STEVE REYNOLDS BLVD.,  
 NORCROSS, GA 30093

**ONTARIO • CANADA**  
 375 PIDO ROAD  
 PETERBOROUGH, ONTARIO K9J-6X7