



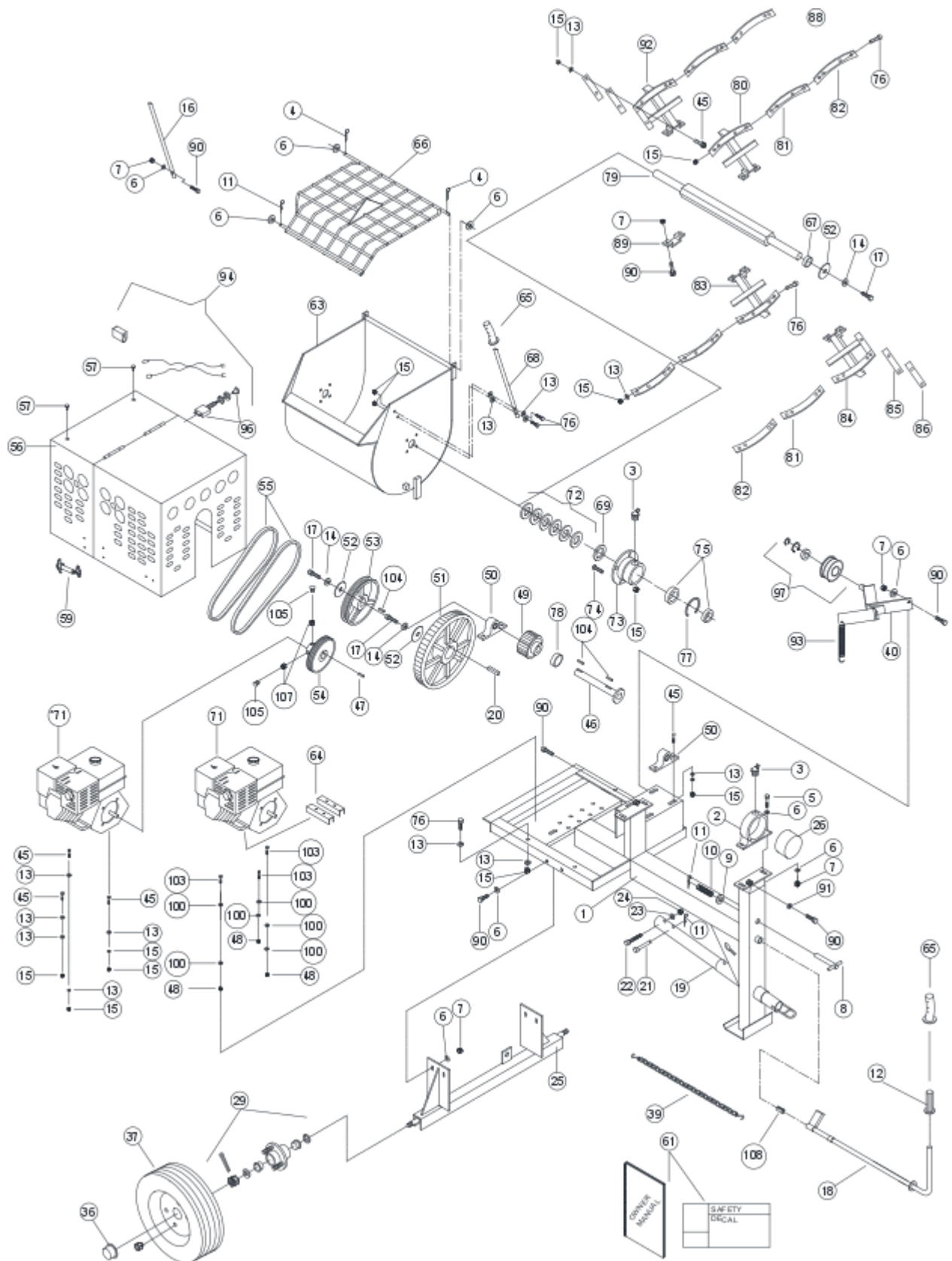
MORTAR AND PLASTER MIXER

MM6SH160 MM8SH240 MM9SH240
MM6PH160 MM8PH240 MM9SE200
MM6SE150 MM8SE200
MM6PE150 MM8PE200

PARTS BOOK







Item #	Part No.	Description	QTY		
			MM6	MM8	MM9
1	T200	Frame (Serial 4946 and higher)	1		
	T300	Frame		1	
	T400	Frame			1
2	T101	Pillow Block	2	2	2
3	T102	Grease Fitting, 45 deg.	4	4	4
4	T111	Cotter Pin, 3/16 x 2"	2	2	2
5	T104	Hex Head Cap Screw, 1/2"-13 x 2-1/2" LG	4	4	4
6	T105	Washer, Flat, 1/2"	20	20	20
7	T106	Locknut, 1/2"	17	17	17
8	T107	Pin, Lock	1	1	1
9	T108	Washer, Flat, 3/4"	1	1	1
10	T109	Spring	1	1	1
11	T110	Pin, Hair	3	3	3
12	T414	Handle Grip, Small	1	1	1
13	T112	Washer, Flat, 3/8"	64	68	68
14	T113	Washer, Lock, 3/8"	3	3	3
15	T114	Lock Nut, 3/8"	42	44	44
16	T115	Handle, Grid	1	1	1
17	T116	Hex Head Screw, 3/8"NF x 1" LG	3	3	3
18	T117	Control Handle, MM6, MM8	1	1	
	T415	Control Handle, MM9			1
19	T118	Pintle Hitch	1	1	1
	T119	2" Ball Hitch (Optional)	1	1	1
20	T120	Key, 3/8" x 2	1	1	1
21	T121	Pin, Locking	1	1	1
22	T122	Hex Head Screw, 3/4"NF x 3-1/2" LG	1	1	1
23	T123	Lockwasher, 3/4"	1	1	1
24	T124	Nut, Hex 3/4" NF	1	1	1
25	T125	Axle	1	1	1
	T225-1	Axle Assembly (Includes T129)	1	1	1
26	T126	Dust Cover, Paddle Shaft (Not all models)	1	1	1
29	T129	Hub Assembly, 4 bolts (Includes T136)	2	2	2
36	T136	Dust Cover	2	2	2
37	T137	Wheel and Tire Assembly	2	2	2
39	T501	Chain	1	1	1
40	T140	Idler Arm	1	1	1
45	T145	Hex Head Screw, 3/8 x 2	10	10	10
46	T146	Transmission Shaft, 1" x 7-1/4"	1	1	1
47	T147	Key, 1/4 (For 8HP and 13HP Engines)	1	1	1

Item #	Part No.	Description	QTY		
			MM6	MM8	MM9
	T147-1	Key, 3/16" (For 5.5HP Engine)	1	1	1
48	T148	Screw Screw, 5/16 (For 5.5HP Engine)	4	4	4
49	T149	Pinion, 12 Teeth	1	1	1
50	T150	Pillow Block Bearing, 1"	2	2	2
51	T151	Gear, 96 Teeth	1	1	1
52	T152	Washer, 3/16", For Central Shaft	3	3	3
53	T153	Pulley, 8"	1	1	1
	T153-1	Pulley, 12" (For Electric Motor)	1	1	1
54	T154	Pulley, 3-3/4" (For 8HP Engine)	1	1	1
	T154-1	Pulley, 4-1/4", 3 Groove (For 5.5HP Engine)	1	1	1
	T154-2	Pulley, 2.5 x 5/8", 2 Groove (For Electric Motor)	1	1	1
	T154-3	Pulley, 2.5 x 7/8", 2 Groove (For Electric Motor)	1	1	1
	T154-4	Pulley, 2.5 x 1-1/8", 2 Groove (For Electric Motor)	1	1	1
55	T155	Transmission Belt, Gas Engine	2	2	2
	T155-1	Transmission Belt, Electric Motor	2	2	2
56	T157	Shroud Assembly	1	1	1
57	T158	Rubber Screw	2	2	2
59	T160	Hook Assembly	2	2	2
61	T299	Safety Decal and Owner's Manual	1	1	1
63	T164	Drum, MM6	1		
	T211	Drum Assembly, Complete, MM6	1		
	T211-0	Drum Assembly, Complete, MM6 (Serials 3999 and lower)	1		
	T302	Drum, MM8		1	
	T212	Drum Assembly, Complete, MM8		1	
	T402	Drum, MM9			1
	T213	Drum Assembly, Complete, MM9			1
64	T165	Bracket Support	2		
65	T166	Handle Grip	2	2	2
66	T167	Grid, MM6	1		
	T303	Grid, MM8		1	
	T403	Grid, MM9			1
67	T413	Bushing, Main Shaft	1	1	1
68	T168	Handle, Tilt	1	1	1
69	T169	Steel seal	2	2	2
71	-	Engine/Motor	1	1	1
72	T172	Kit, Seal (6 Seals Per Kit)	2	2	2
73	T173-2	Trunnion Bolt, 3/8"	2	2	2
74	T174	Carriage Bolt, 3/8" x 1-1/2"	8	8	8
75	T175	Bearing, 208-24 (With Locking Ring)	2	2	2

Item #	Part No.	Description	QTY		
			MM6	MM8	MM9
76	T176	Hex Head Cap Screw, 3/8" x 1-1/2"	24	26	26
77	T177	Retaining Ring, 3" Internal Diameter	2	2	2
78	T205	Bushing, 1" x 5/8" Transmission	1	1	1
79	T178	Main Shaft, MM6	1		
	T305	Main Shaft, MM8		1	
	T404	Main Shaft, MM9			1
80	T179	Paddle, Center Right	1		
	T179-3	Paddle, Center Right, Four Holes	1		
	T179-1	Complete Paddle Set, MM6, with hardware&rubber	1		
	T179-2	Complete Paddle Set, MM6, Four Holes	1		
	T306	Paddle, Center Right, Two Holes		1	1
	T306-2	Paddle, Center Right, Four Holes		1	1
	T306-1	Complete Paddle Set, MM8 and MM9, Two Holes		1	1
T306-3	Complete Paddle Set, MM8 and MM9, Four Holes		1	1	
81	T180	Blade, Rubber, Center	4	4	4
82	T181	Center Blade	4	4	4
83	T182	Paddle, Center Left, Two Holes, MM6	1		
	T182-1	Paddle, Center Left, Four Holes, MM6	1		
	T308	Paddle, Center Left, Two Holes		1	1
	T308-1	Paddle, Center Left, Four Holes		1	1
84	T183	Paddle, End Left, Two Holes, MM6	1		
	T183-1	Paddle, End Left, Four Holes, MM6	1		
	T309	Paddle, End Left, Two Holes		1	1
	T309-1	Paddle, End Left, Four Holes		1	1
85	T184	Blade, Rubber Side, MM6	2		
	T310	Blade, Rubber Side		2	2
86	T185	Blade, Side Wiper, MM6	2		
	T311	Blade, Sider Wiper		2	2
88	T301-1	Rubber Blade Kit, MM6	1		
	T301	Rubber Blade Kit		1	1
89	T188	Bracket, Paddle Arm	2	2	2
	T188-1	Bracket, Paddle Arm, Four Holes	2	2	2
90	T189	Hex Head Cap Screw, 1/2" x 1-3/4"	14	14	14
91	T190	Nut, Hex, 1/2"	2	2	2
92	T191	Paddle, End Right, Two Holes, MM6	1		
	T191-1	Paddle, End Right, Four Holes, MM6	1		
	T314	Paddle, End Right, Two Holes		1	1
	T314-1	Paddle, End Right, Four Holes		1	1
93	T192	Spring	1	1	1

Item #	Part No.	Description	QTY		
			MM6	MM8	MM9
94	T193	Push Stop, Complete	1	1	1
96	T195	Switch	1	1	1
97	T197-1	Clutch, Complete	1	1	1
100	T198	Washer, Flat, 5/16" ID x 3/4" OD (For 5.5HP Engine)	8	8	8
103	T201	Hex Head Screw, 5/16" x 3" (For 5.5HP Engine)	4	4	4
104	T202	Key, 1/4" x 1-7/8"	3	3	3
105	T203	Socket Head Set Screw, 3/8" x 1" (For 8HP Engine)	2	2	2
	T203-1	Socket Head Set Screw, 3/8" x 1-1/4" (For 5.5HP Engine)	2		
106	T206	Complete Steel Spiral Blade Kit, MM6	1		
	T206-1	Complete Steel Spiral Blade Kit, MM8		1	
	T206-2	Complete Steel Spiral Blade Kit, MM9			1
107	T410	Nut, Hex, 3/8NC	2	2	2
108	T505	Pin, Lock, 3/8" x 1-1/2"	1	1	1



morrison

BARTELL  GLOBAL



Bartell Morrison Inc.
170 Traders Blvd E
Mississauga, Ontario, Canada
L4Z 1W7
Tel: 1-647-953-4100
Fax: 1-647-953-4101



Bartell Morrison (USA) LLC
200 Commerce Drive, Unit A
Freehold, New Jersey, USA
07728
Tel: 1-848-225-8100
Fax: 1-848-225-8101



Innovatech
4701 Allmond Ave
Louisville, Kentucky, USA
40209
Tel: (425) 405-9100
Fax: (425) 405-9101



SPE International
Honeyholes Lane
Dunholme, Lincoln, UK
LN2 3SU
Tel: +44 (0)1673 860709
Fax: +44 (0)1673 861119



**BARTELL
GLOBAL**

5 BRANDS - 1 SOURCE FOR
GREAT EQUIPMENT
BARTELL morrison   

BARTELLGLOBAL.COM