



M-6 CORE BORE DRILLING MACHINE PARTS LIST

February 26, 2014

Part # 1800844

Proposition 65
State of California

Warning !

Engine exhaust and some its constituents are known to the State of California to cause cancer, birth defects, and/or other reproductive harm.

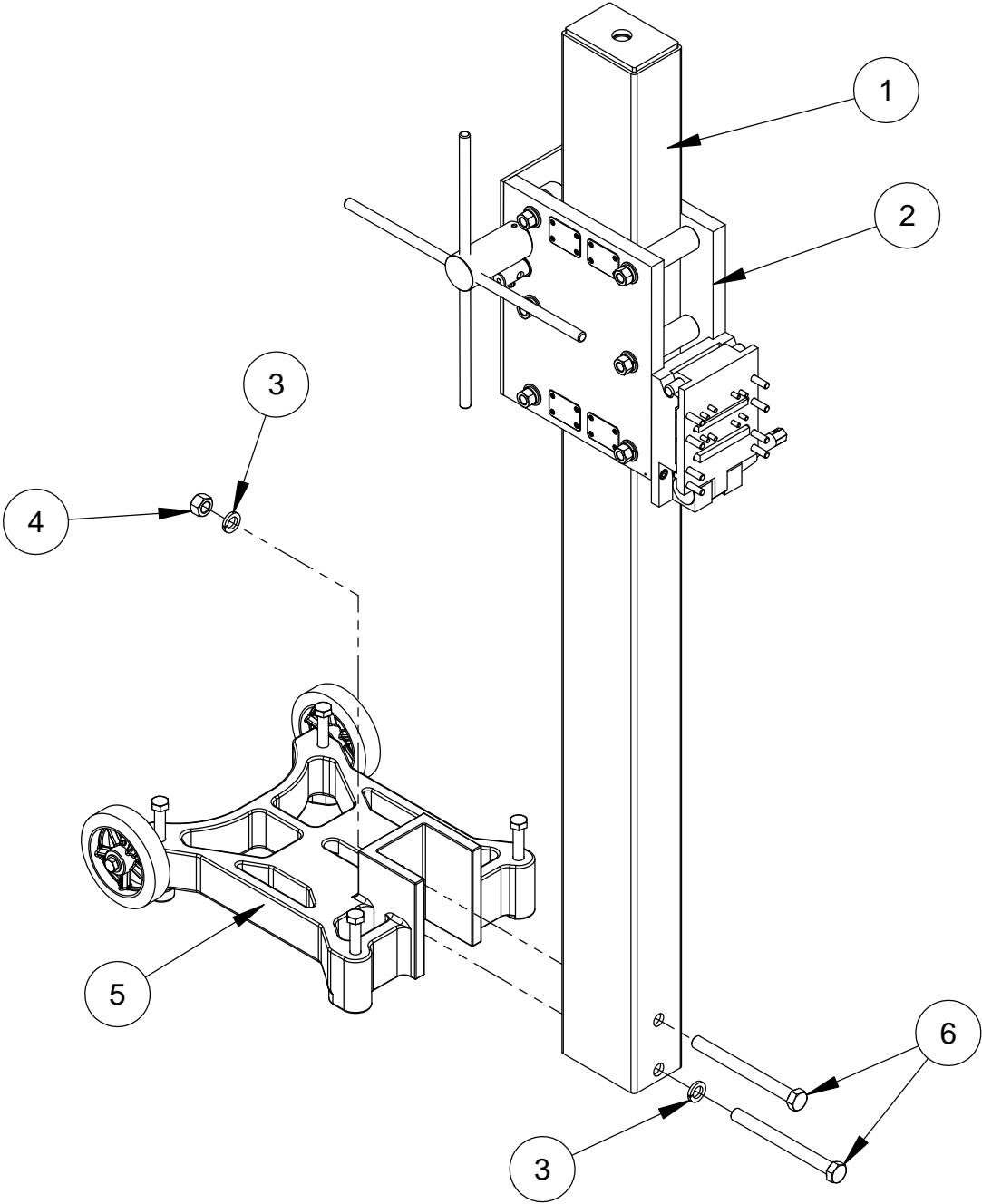
Notification of Spark Arrester Requirement for
State of California

It is a violation of Section 4442 or 4443 to use or operate the engine on any forest-covered, brush-covered, or grass-covered land unless the engine is equipped with a spark arrester, as defined in Section 4442, maintained in effective working order or the engine is constructed, equipped, and maintained for the prevention of fire pursuant to Section 4443.

TABLE OF CONTENTS

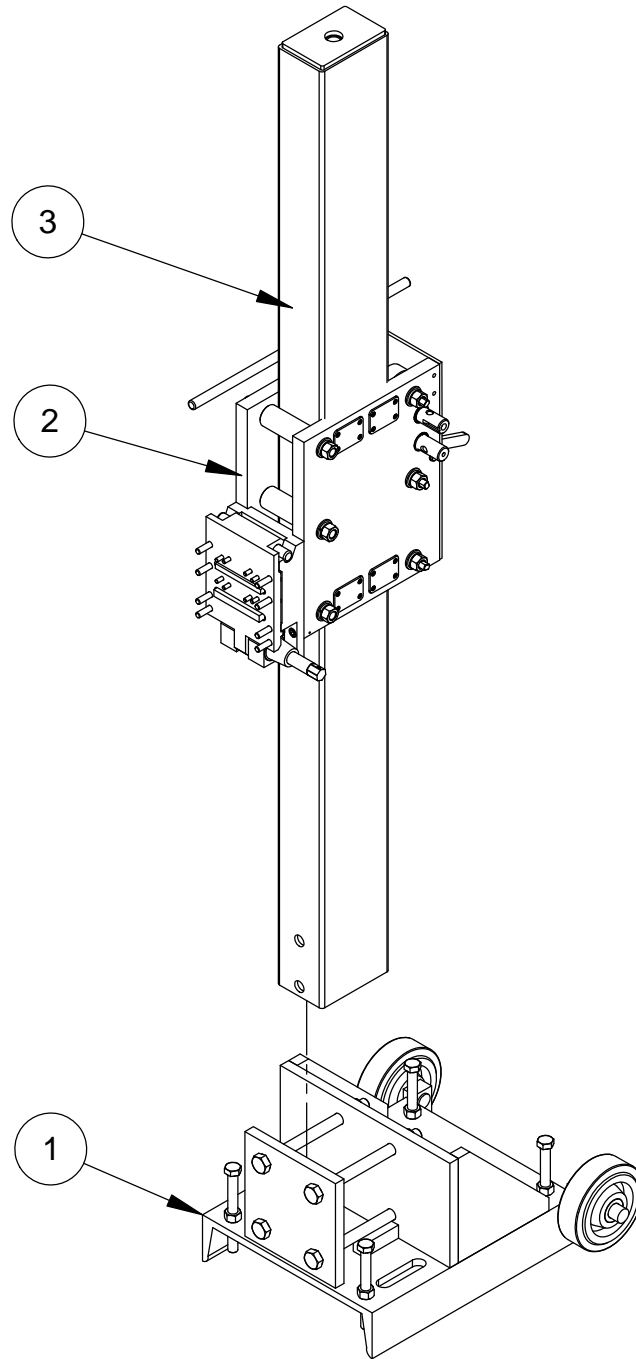
<u>Description</u>	<u>Page No.</u>
Anchor Drill Stand with Wheels and Carriage.....	4
Steel Base Drill Stand with Carriage.....	5
Anchor Drill Stand with Wheels Assembly.....	6
Steel Base Stand Assembly	7
Heavy Duty Roller Carriage Assembly.....	8
Autofeed Quick Disconnect Carriage Assembly.....	10 - 11
Carriage Plate Assembly – Right and Left Side.....	12
Quick Disconnect Motor Mount Assembly	13
Quick Disconnect Motor Plate	14
Quick Disconnect Adapter Assembly	15
Adjustable Roller Assembly.....	16
Non- Adjustable Roller Assembly.....	17
Pinion Gear Assembly	18
Spur Gear Assembly	19
Side Roller Assembly	20
Warranty	Rear Cover

#4277581
M-6 Large Anchor Drill Stand w/Carriage



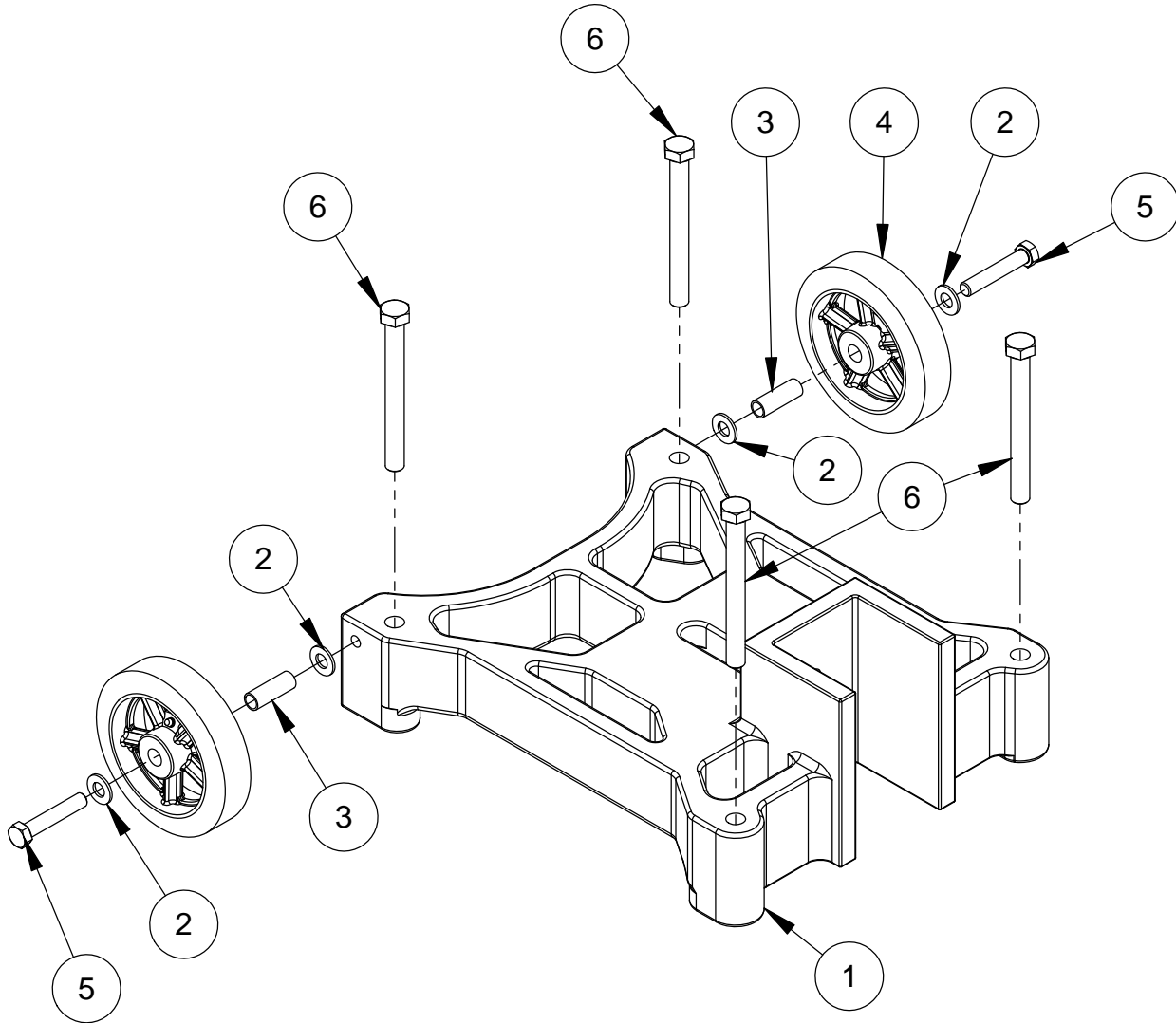
ITEM	PART NO.	QTY.	DESCRIPTION
1	4640000	1	M-6 Mast w/Gear Rack, 72" Long
2	4640114	1	Carriage Assembly, M-6
3	2900042	2	Lock Washer, 3/4" Split
4	2900041	1	Hex Nut, 3/4-10
5	4640005	1	Large Anchor Base Assembly, M-6
6	2900351	2	Cap Screw, Hex Hd., 3/4-10 x 8"

#4277589
M-6 Steel Base Drill Stand w/Carriage



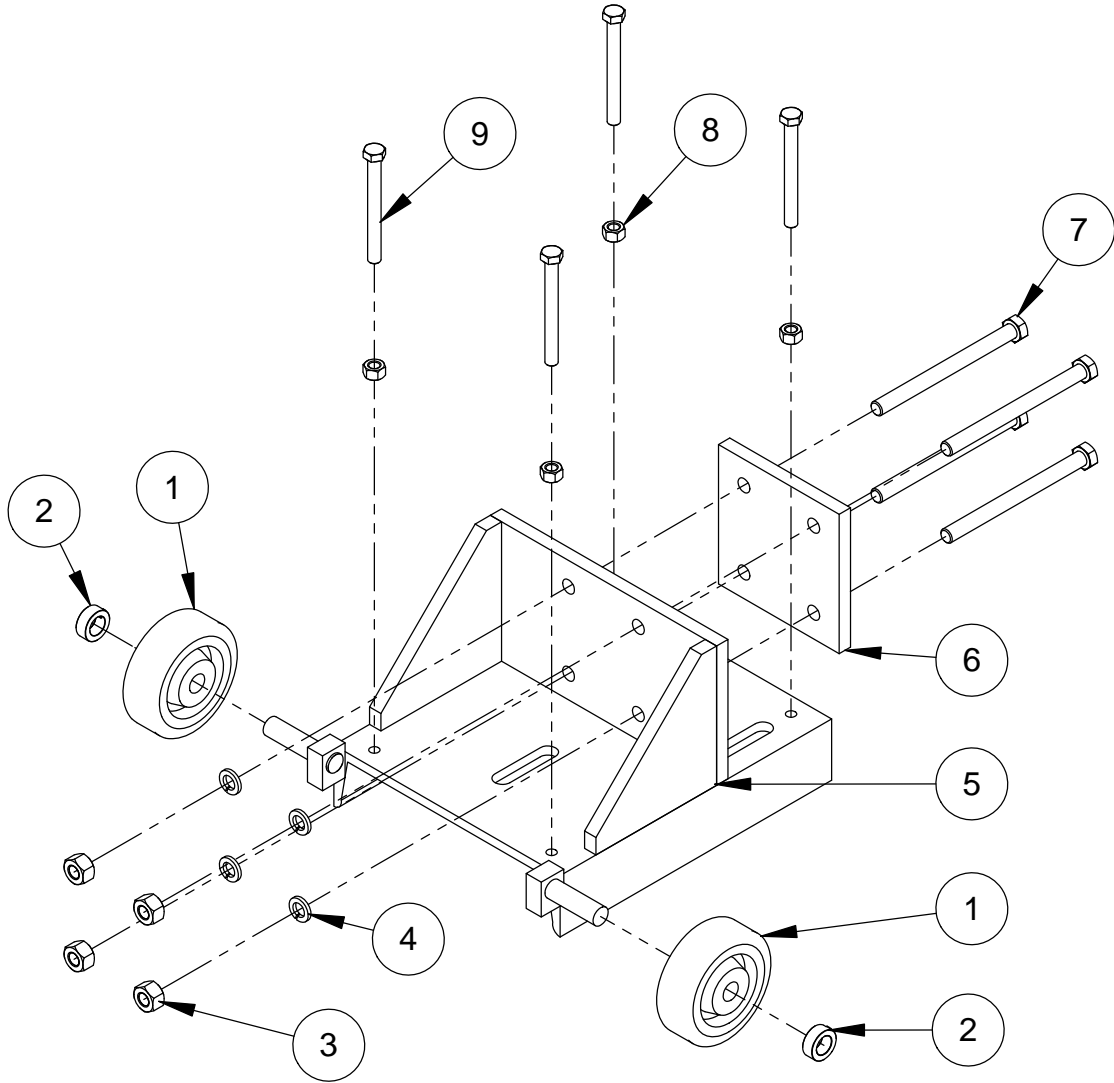
ITEM	PART NO.	QTY.	DESCRIPTION
1	4640083	1	M-6 Steel Base Assembly
2	4640114	1	Carriage Assembly, M-6
3	4640000	1	M-6 Mast w/Gear Rack, 72" Long

#4640005
M-6 Large Anchor Base Assembly



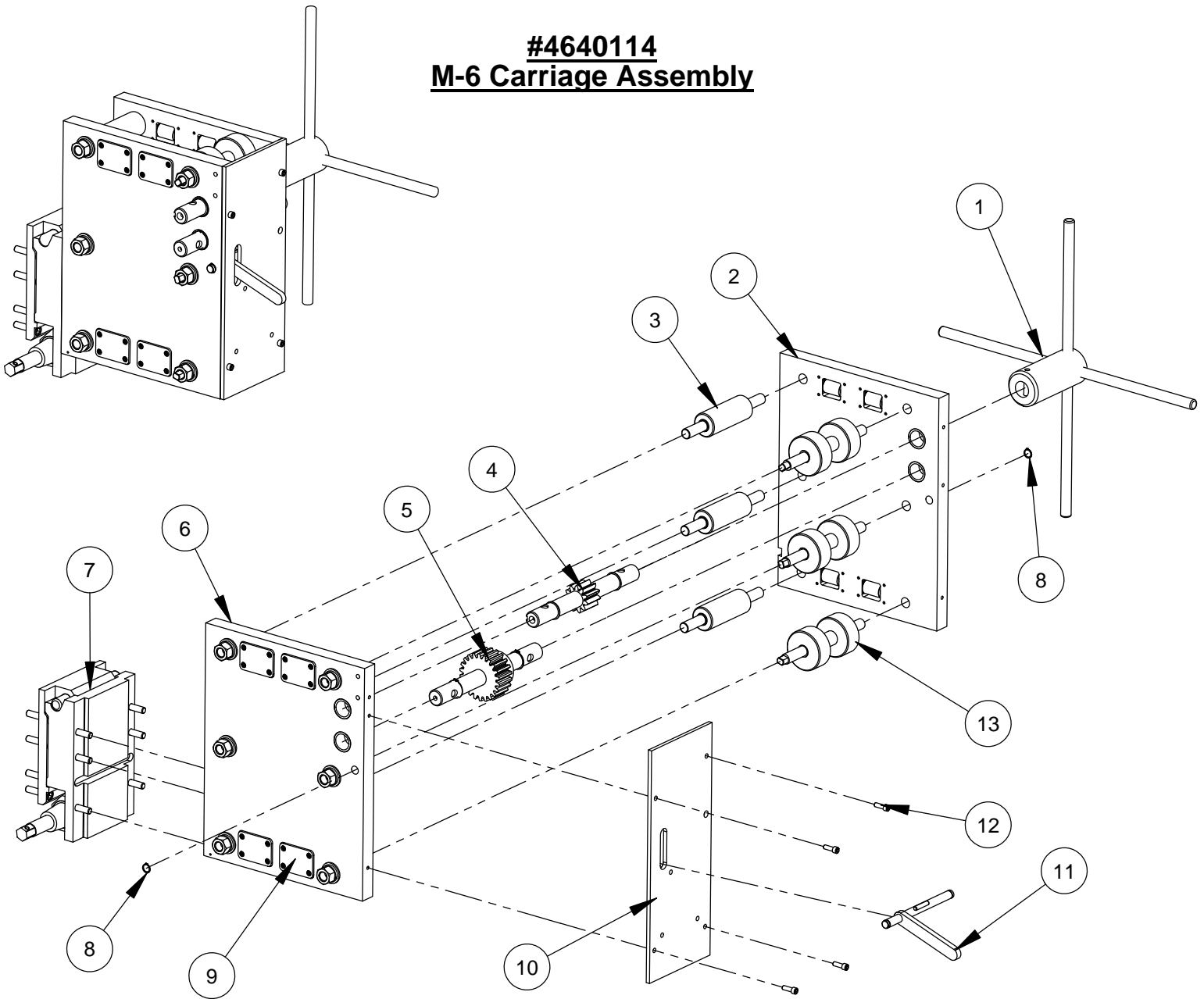
ITEM	PART NO.	QTY.	DESCRIPTION
1	4640006	1	M-6 Large Anchor Base Assembly
2	2900058	4	Flat Washer, 1/2" SAE
3	4640034	2	Wheel Bushing
4	2500003	2	Wheel 6" x 1-1/2" x 5/8"
5	2900105	2	Cap Screw, Hex Hd., 1/2-13 x 2-3/4"
6	2900104	4	Tap Bolt, Hex Hd., 5/8-11 x 6"

#4640083
M-6 Steel Anchor Base Assembly



ITEM	PART NO.	QTY.	DESCRIPTION
1	2500299	2	Wheel, 6" X 2" X 1"
2	2500009	2	Set Collar, 1" ID
3	2900609	4	Heavy Hex Nut, 3/4-10
4	2900042	4	Lock Washer, 3/4" Split
5	4640088	1	Steel Base Weldment, M-6
6	4640085	1	Mast Retainer, M-6
7	2900608	4	Cap Screw, Hex Hd., 3/4-10 x 9"
8	2900112	4	Hex Nut, 5/8-11
9	2900104	4	Tap Bolt, Hex Hd., 5/8-11 x 6"

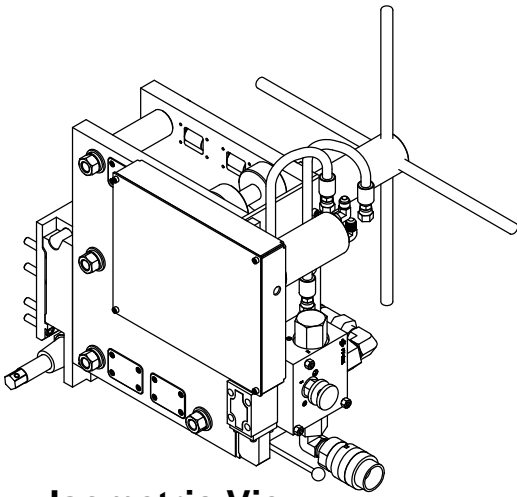
#4640114 M-6 Carriage Assembly



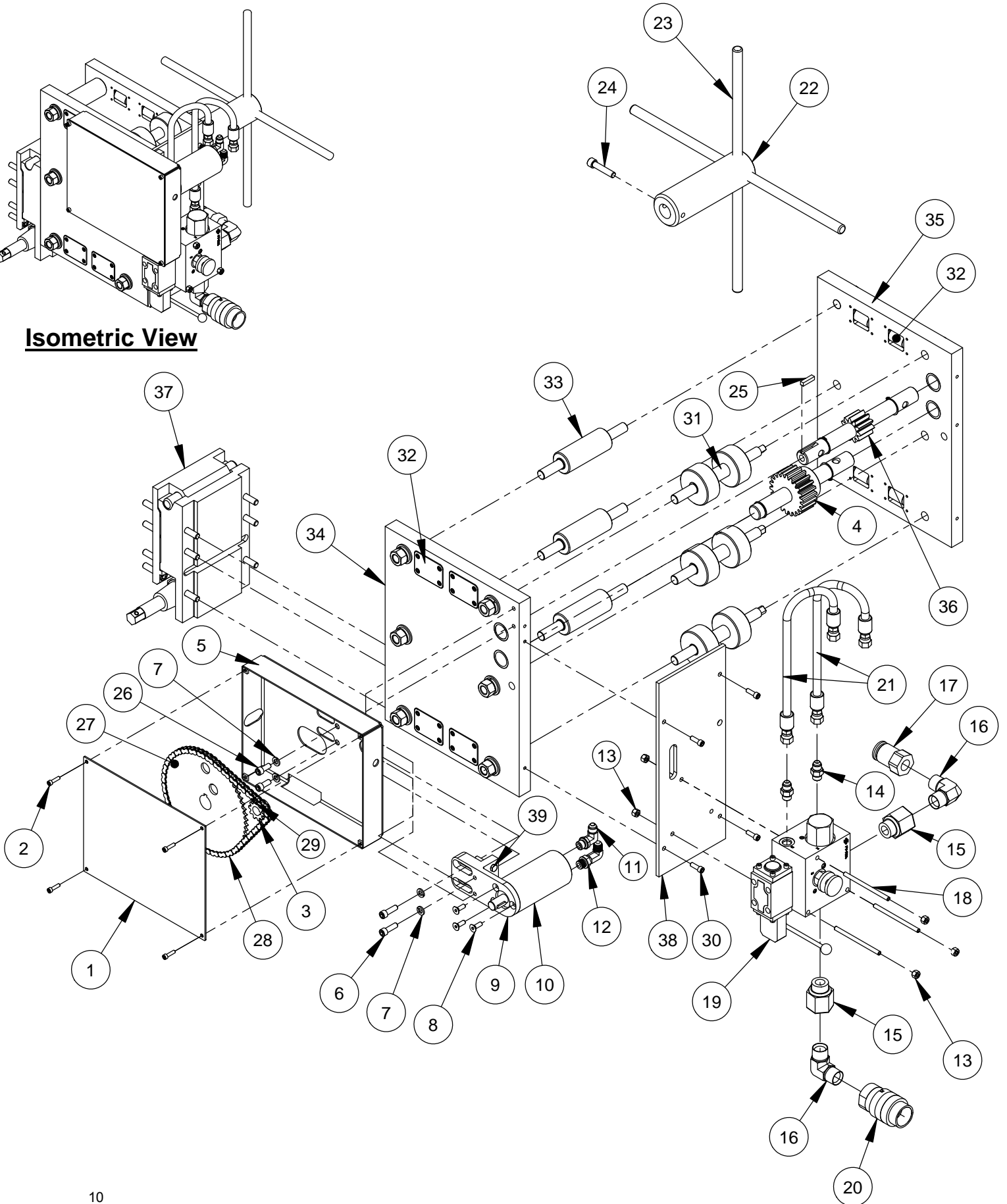
ITEM	PART NO.	QTY.	DESCRIPTION
1	4640029	1	Spoke Handle Assembly, M-6, Complete
2	4640099	1	M-6 Right Side Carriage Plate Ass'y
3	4640013	3	Non-Adjustable Roller Assembly, M-6
4	4640015	1	Pinion Gear Assembly, M-6
5	4640017	1	Spur Gear Assembly, M-6
6	4640098	1	M-6 Left Side Carriage Plate Ass'y
7	4699997	1	M6 QD Motor Mount Assembly
8	2500697	2	Retaining Ring, 1/2" Ext. 5100-50
9	4640033	8	Side Roller Assembly, M-6 Only
10	4640024	1	Cover Plate, M-6, Power Raise & Lower
11	4640023	1	Carriage Lock, M-6
12	2900247	4	Cap Screw, Soc. Hd., 1/4-20 x 3/4"
13	4640009	3	Adjustable Roller Assembly, M-6

Intentionally Blank

#4640115
M-6 Autofeed Quick Disconnect Carriage Assembly



Isometric View

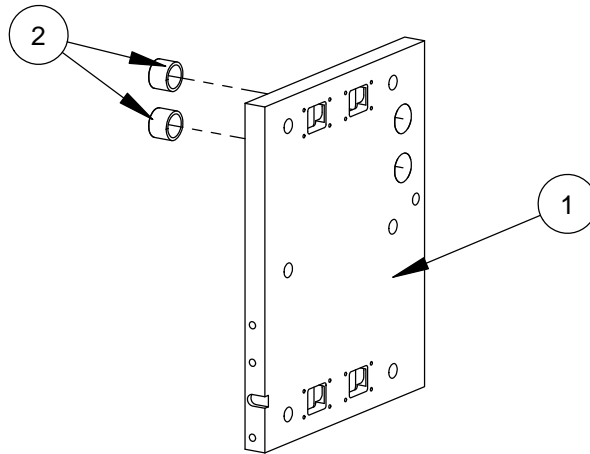


#4640115
M-6 Autofeed Quick Disconnect Carriage Assembly

ITEM	PART NO.	QTY.	DESCRIPTION
1	4640050	1	Cover Plate
2	2900116	4	Cap Screw, Soc. Hd., #10-24 x 3/4"
3	2500249	1	Sprocket, #35,10 Tooth
4	4640092	1	Spur Gear Assembly, Modified, M-6
5	4640049	1	Chain Guard for Hyd. M-6
6	2900103	2	Cap Screw, Soc. Hd., 5/16-18 x 1"
7	2900031	4	Lock Washer, 5/16" Split
8	2900506	3	Cap Screw, Flat Head, 1/4-28 x 3/4"
9	4640048	1	Motor Mount (OMM Hyd.)
10	2600083	1	Hydraulic Motor, Danfoss OMM32
11	3200271	1	Elbow, 3/8" O-Ring to 3/8" M. JIC
12	3200272	1	Long Elbow, 3/8" O-Ring to 3/8" M. JIC
13	2900010	6	Lock Nut, 1/4-20 Nylon
14	3200263	2	Adapter, 3/8" O-Ring to 3/8" M. JIC
15	3200138	2	Adapter, 1" O-Ring to 3/4" F. Pipe
16	3200036	2	Elbow, 3/4" Male Pipe
17	3200101	1	Nipple, 3/4" Quick Disconnect
18	4640093	3	Threaded Rod, 1/4-20 x 4"
19	3200499	1	Manifold, M-6 Autofeed
20	3200100	1	Coupler, 3/4" Quick Disconnect
21	3200392	2	Hose Assembly, 3/8" x 14" Lg. HP
22	4641023	1	Handle Housing, M-6
23	4641016	4	Handle, Spoke, M-2
24	2900124	1	Cap Screw, Soc. Hd., 3/8-16 x 1-3/4"
25	6011089	1	Key, 1/4" Sq. x 1" Long
26	2900912	2	Cap Screw, Soc. Hd., 5/16-18 x 3/4"
27	4640053	1	Sprocket, Hydraulic, M-6
28	6020018	1	Chain, #35,68 Pitch Length
29	2500020	1	#35 Offset Link
30	2900247	4	Cap Screw, Soc. Hd., 1/4-20 x 3/4"
31	4640009	3	Adjustable Roller Assembly, M-6
32	4640033	8	Side Roller Assembly, M-6 Only
33	4640013	3	Non-Adjustable Roller Assembly, M-6
34	4640098	1	M-6 Left Side Carriage Plate Ass'y
35	4640099	1	M-6 Right Side Carriage Plate Ass'y
36	4640015	1	Pinion Gear Assembly, M-6
37	4699997	1	M6 QD Motor Mount Assembly
38	4640024	1	Cover Plate, M-6, Power Raise & Lower
39	2900416	2	Tap Screw, Hex Hd., 1/4-20 X 1-1/2"

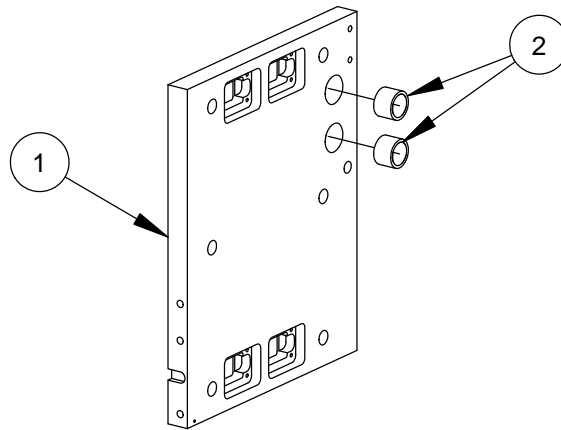
M-6 Carriage Plate Assemblies Right and Left Side

#4640099 Right Side



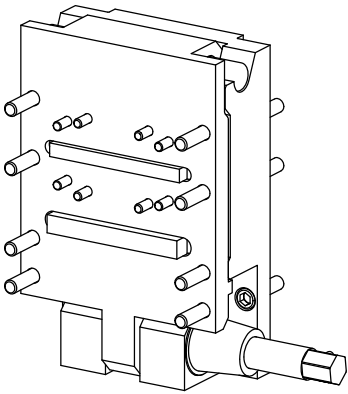
ITEM	PART NO.	QTY.	DESCRIPTION
1	4640117	1	Carriage Plate, Right Side
2	2400006	2	Bearing, 1" x 1-1/4" x 7/8"

#4640098 Left Side

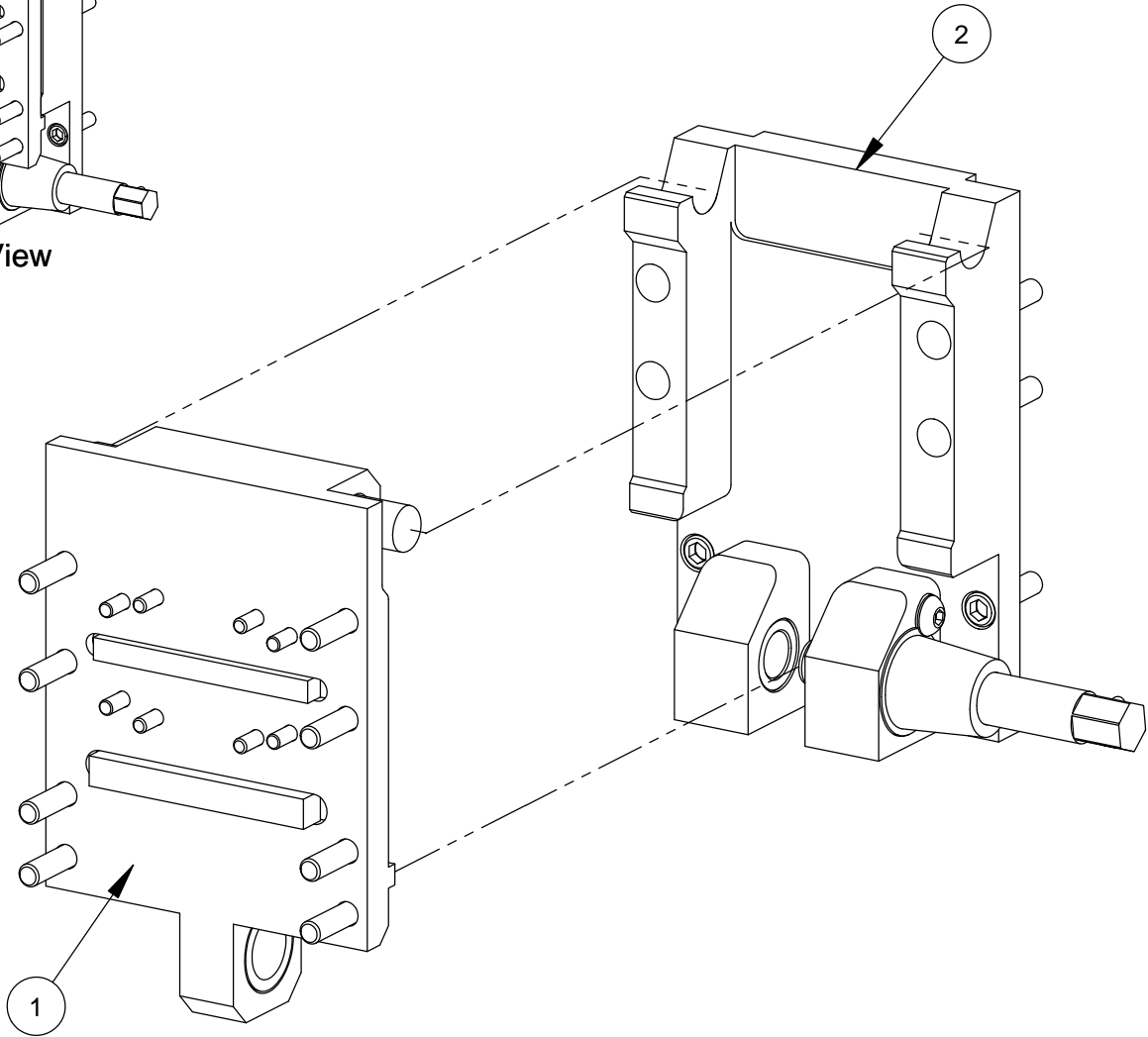


ITEM	PART NO.	QTY.	DESCRIPTION
1	4640116	1	Carriage Plate, Left Side, Hyd. M-6
2	2400006	2	Bearing, 1" x 1-1/4" x 7/8"

469997
M-6 Quick Disconnect Motor Mount Assembly

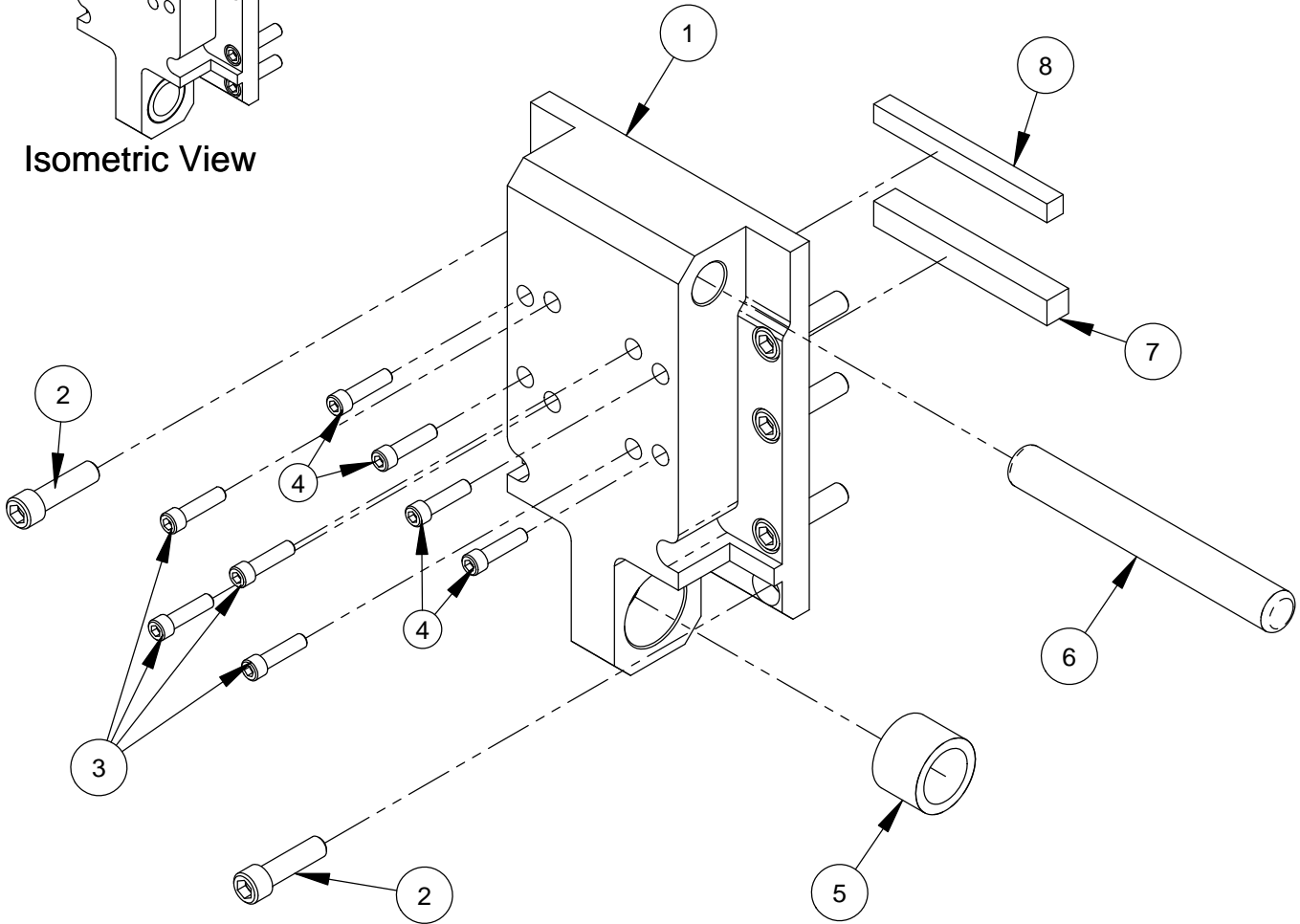
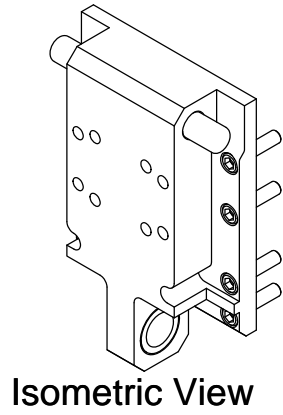


Isometric View



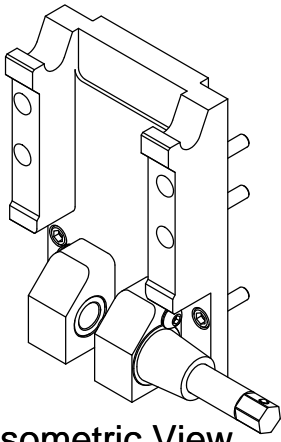
ITEM	PART NO.	QTY.	DESCRIPTION
1	4699995	1	M6 QD Motor Mount Assembly
2	4699996	1	M6 QD Motor Mount Adapter Assembly

#469995
M-6 Quick Disconnect Motor Plate

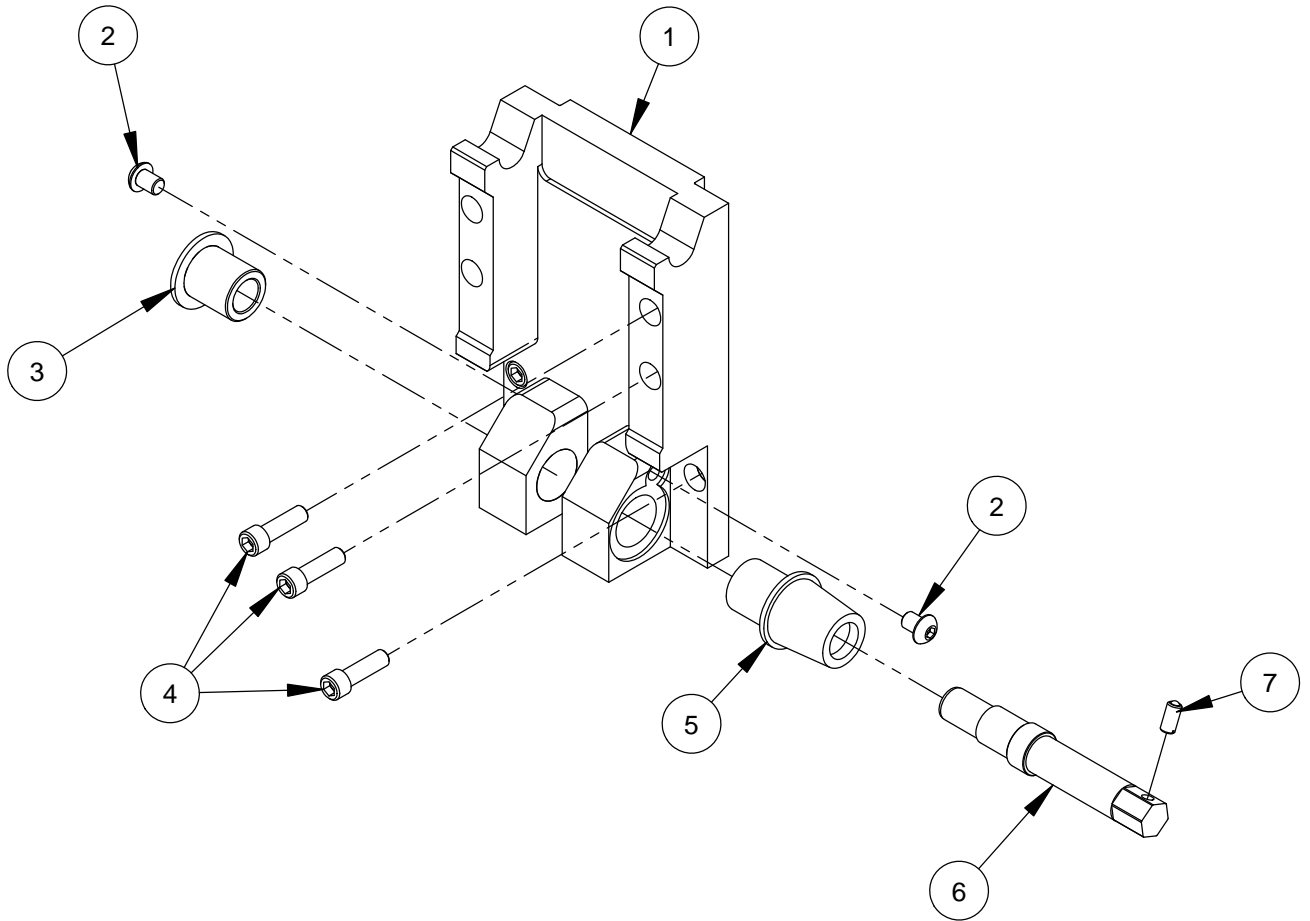


ITEM	PART NO.	QTY.	DESCRIPTION
1	4699993	1	Quick Disconnect Motor Mount
2	2900183	8	Capscrew, Soc Hd., 3/8"-16 X 1-3/8"
3	2900088	4	Cap Screw, Soc. Hd., 1/4-20 x 1"
4	2900089	4	Cap Screw, Soc. Hd., 1/4-28 x 1"
5	2400144	1	Bronze Bearing, 1-3/8" x 1"
6	2900353	1	Dowel Pin, 3/4" Dia. x 6"
7	4641010	1	Key, 1/2" Sq. x 4" Long
8	4645006	1	Key, 3/8" Sq. x 4"

#4699996
M-6 Quick Disconnect Adapter Assembly

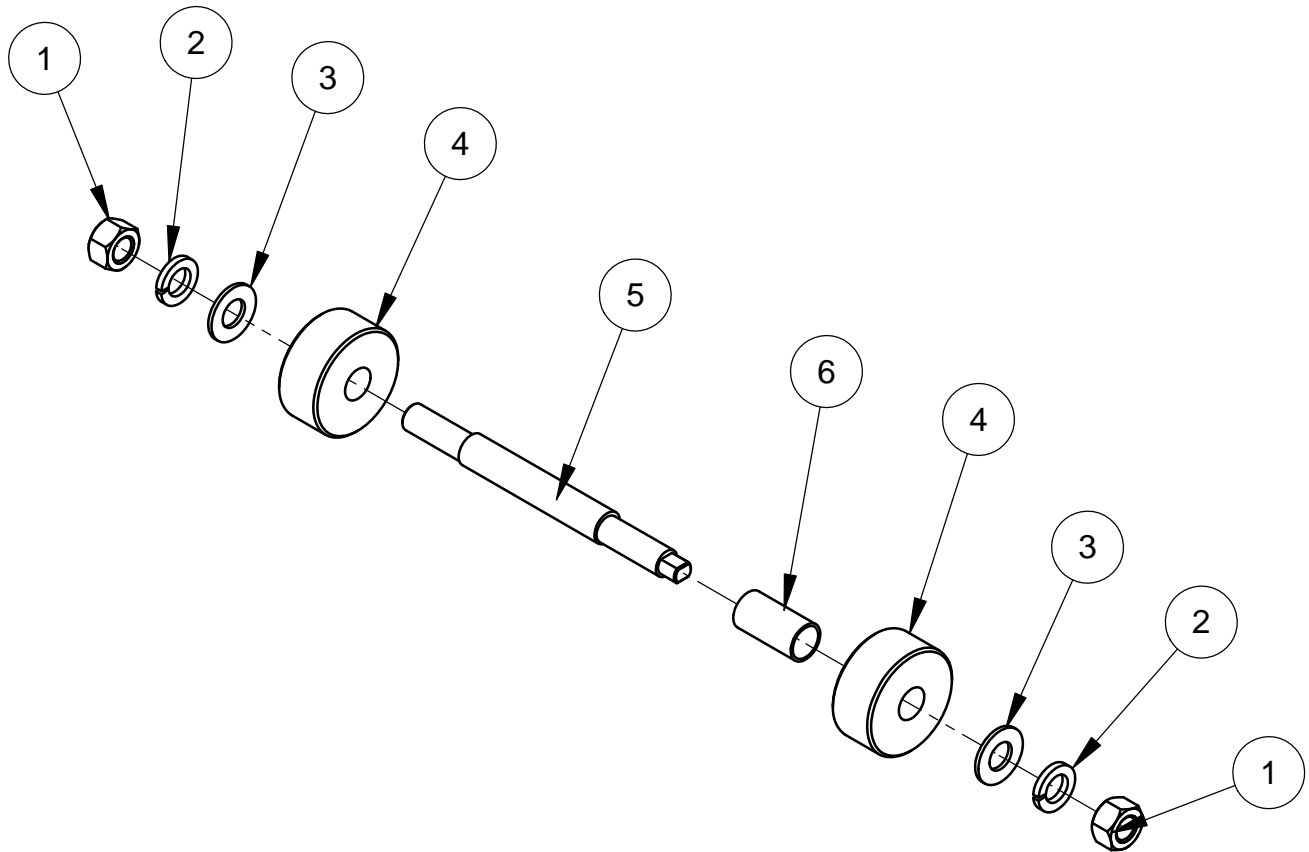


Isometric View



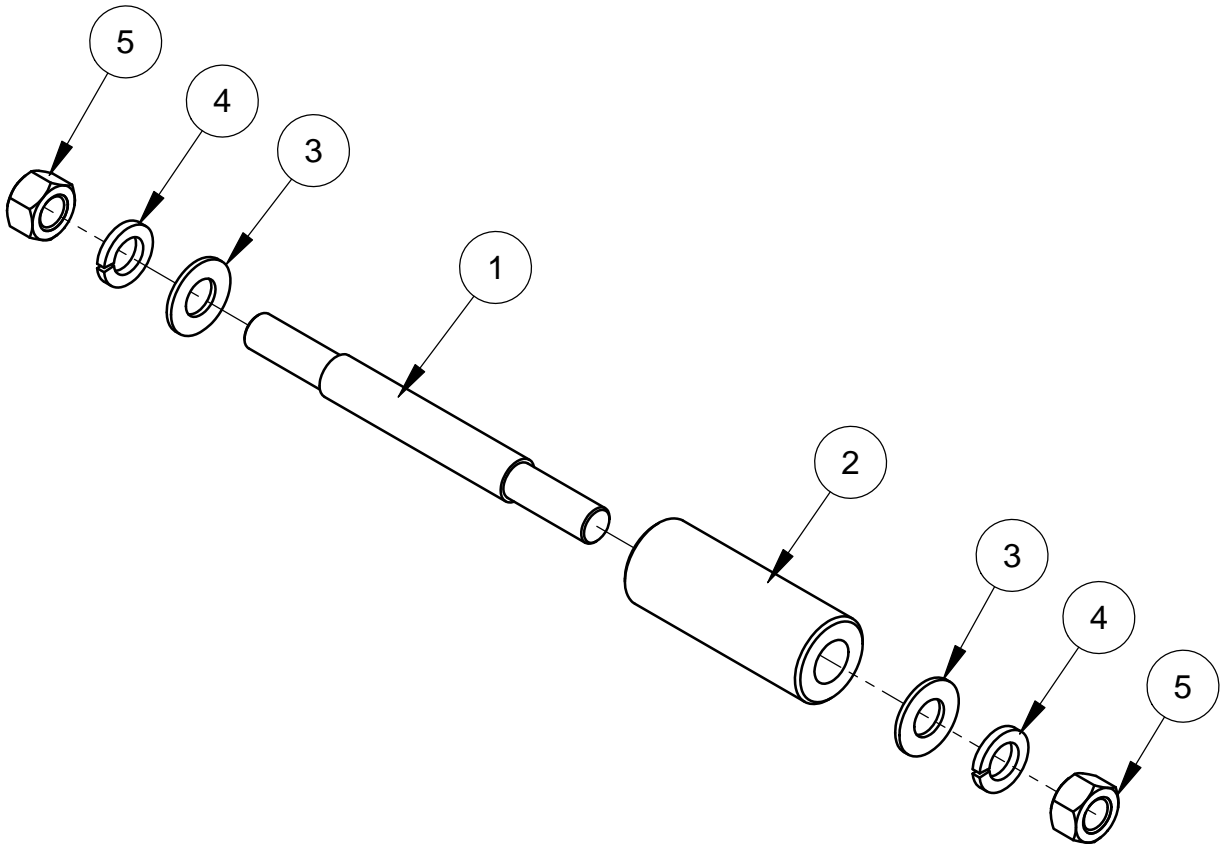
ITEM	PART NO.	QTY.	DESCRIPTION
1	4699994	1	QD Motor Mount Adapter
2	2900285	2	Cap Screw, Button Hd., 3/8-24 x 1/2"
3	4600110	1	Cam Shaft Bushing
4	2900724	6	Cap Screw, Soc. Hd., 3/8-16 x 1-1/4"
5	4600109	1	Cam Shaft Housing
6	4600108	1	Cam Lock Shaft
7	2400143	1	Ball Plunger M8

#4640009
M-6 Adjustable Roller Assembly



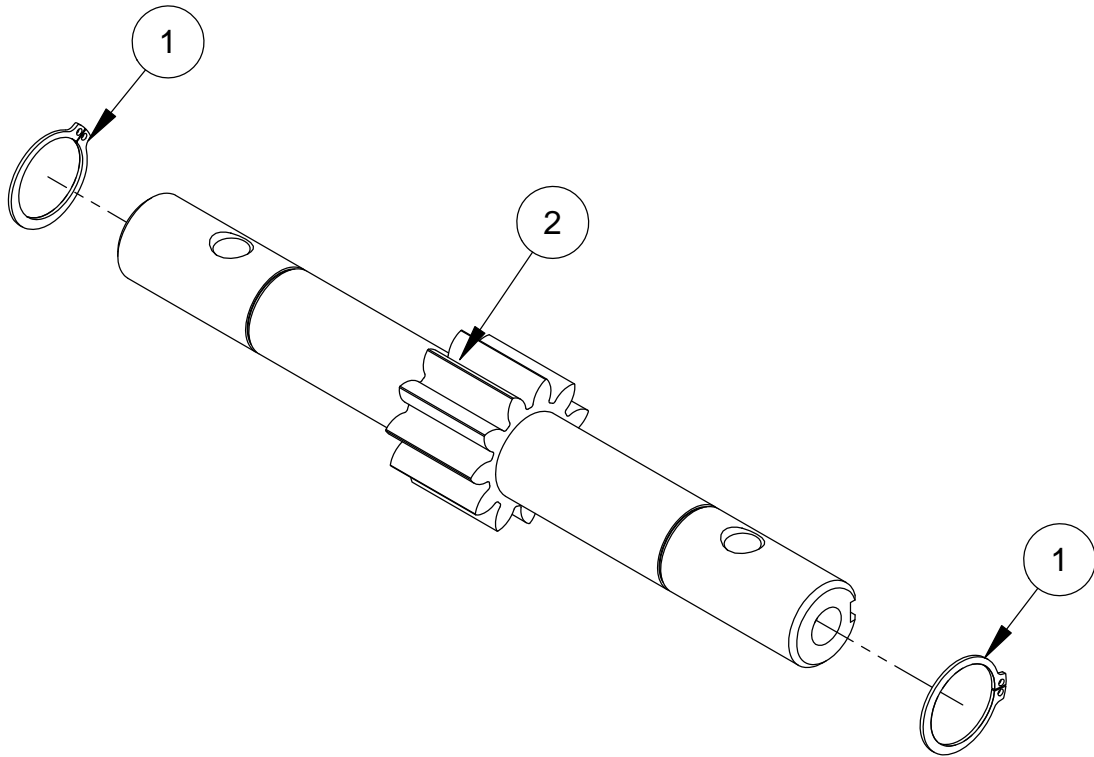
ITEM	PART NO.	QTY.	DESCRIPTION
1	2900112	2	Hex Nut, 5/8-11
2	2900113	2	Lock Washer, 5/8" Split
3	2900002	2	Flat Washer, 5/8" SAE
4	4640010	2	Roller, 2.50" Dia.
5	4640012	1	Eccentric Shaft
6	4640011	1	Spacer, 7/8" O.D.

#4640013
M-6 Non-Adjustable Roller Assembly



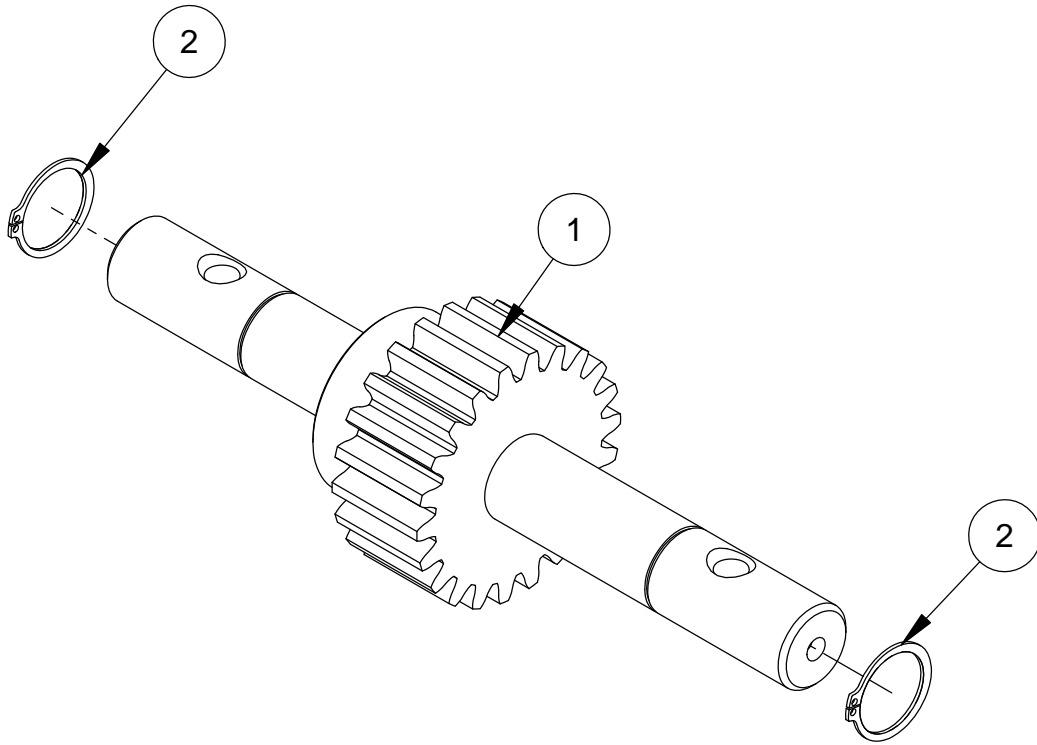
ITEM	PART NO.	QTY.	DESCRIPTION
1	4640028	1	Straight Shaft, M-6
2	4640014	1	Roller, 1.50" Dia.
3	2900002	2	Flat Washer, 5/8" SAE
4	2900113	2	Lock Washer, 5/8" Split
5	2900112	2	Hex Nut, 5/8-11

#4640015
M-6 Pinion Gear Assembly



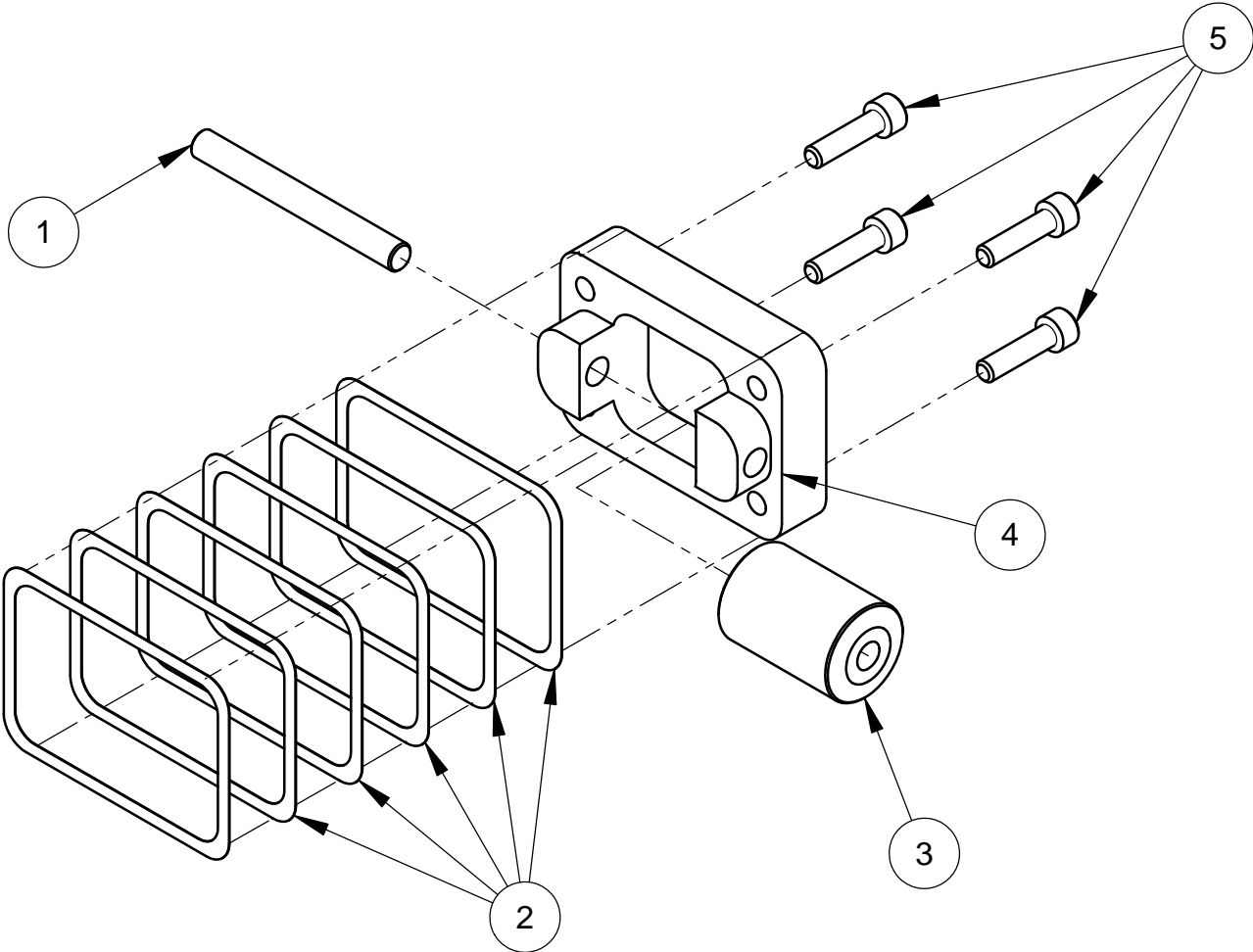
ITEM	PART NO.	QTY.	DESCRIPTION
1	2500711	2	Retaining Ring,1"
2	4640016	1	Spur Gear

#4640017
M-6 Spur Gear Assembly



ITEM	PART NO.	QTY.	DESCRIPTION
1	4640018	1	Spur Gear Assembly, M-6
2	2500711	2	Retaining Ring, 1"

#4640033
M-6 Only, Side Roller Assembly



ITEM	PART NO.	QTY.	DESCRIPTION
1	4647106	1	Side Roller Shaft
2	2400011	6	Aluminum Gasket Shim, .005"
3	4647113	1	Side Roller, Plastic
4	4647102	1	Side Roller Housing
5	2900116	4	Cap Screw, Soc. Hd., #10-24 x 3/4"

EQUIPMENT AND PARTS WARRANTY

Diamond Products warrants all equipment manufactured by it against defects in workmanship or materials for a period of one (1) year from the date of shipment to Customer.

The responsibility of Diamond Products under this Warranty is limited to replacement or repair of defective parts at Diamond Products' Elyria, Ohio factory, or at a point designated by it, of such parts as shall appear to us upon inspection at such parts, to have been defective in material or workmanship, with expense for transportation and labor borne by Customer.

In no event shall Diamond Products be liable for consequential or incidental damages arising out of the failure of any Product to operate properly.

Integral units such as engines, electric motors, batteries, transmissions, etc., are excluded from this Warranty and are subject to the prime manufacturer's warranty.

THIS WARRANTY IS IN LIEU OF ALL OTHER WARRANTIES, EXPRESSED OR IMPLIED, AND ALL SUCH OTHER WARRANTIES ARE HEREBY DISCLAIMED.



333 Prospect Street, Elyria, Ohio 44035
(440) 323-4616 • (800) 321-5336 • Fax (440) 323-8689
www.diamondproducts.com