



SINGLE HEAD
FLOOR GRINDER
PARTS LIST

**MODEL
CC100**

FEBRUARY 2014

RECOMMENDED POWER CORD GAUGE

HORSE POWER	PHASE	VOLTS	AMPS	50 Ft. CORD	100 Ft. CORD	150 Ft. CORD	200 Ft. CORD
5hp	1ph	230v	23A	#10	#8	#6	#4
5hp	3ph	230v	12A	#14	#12	#10	#8
5hp	3ph	460v	6A	#14	#14	#12	#10
7.5hp	1ph	230v	33A	#8	#8	#6	#4
10hp	3ph	230v	24A	#10	#8	#6	#4
10hp	3ph	460v	12A	#14	#12	#10	#8
20hp	3ph	230v	52A	#6	#6	#4	#2
20hp	3ph	460v	26A	#10	#8	#6	#4
25hp	3ph	230v	58A	#6	#6	#4	#2
25hp	3ph	460v	29A	#10	#8	#6	#4
30hp	3ph	230v	74A	#6	#4	#2	#1
30hp	3ph	460v	37A	#8	#6	#4	#2
40hp	3ph	460v	48A	#8	#6	#4	#2
50hp	3ph	460v	62A	#4	#4	#2	#0

CAUTION: Use of a wire gauge that is too small will cause loss of power or overheating and will damage the electric motor.

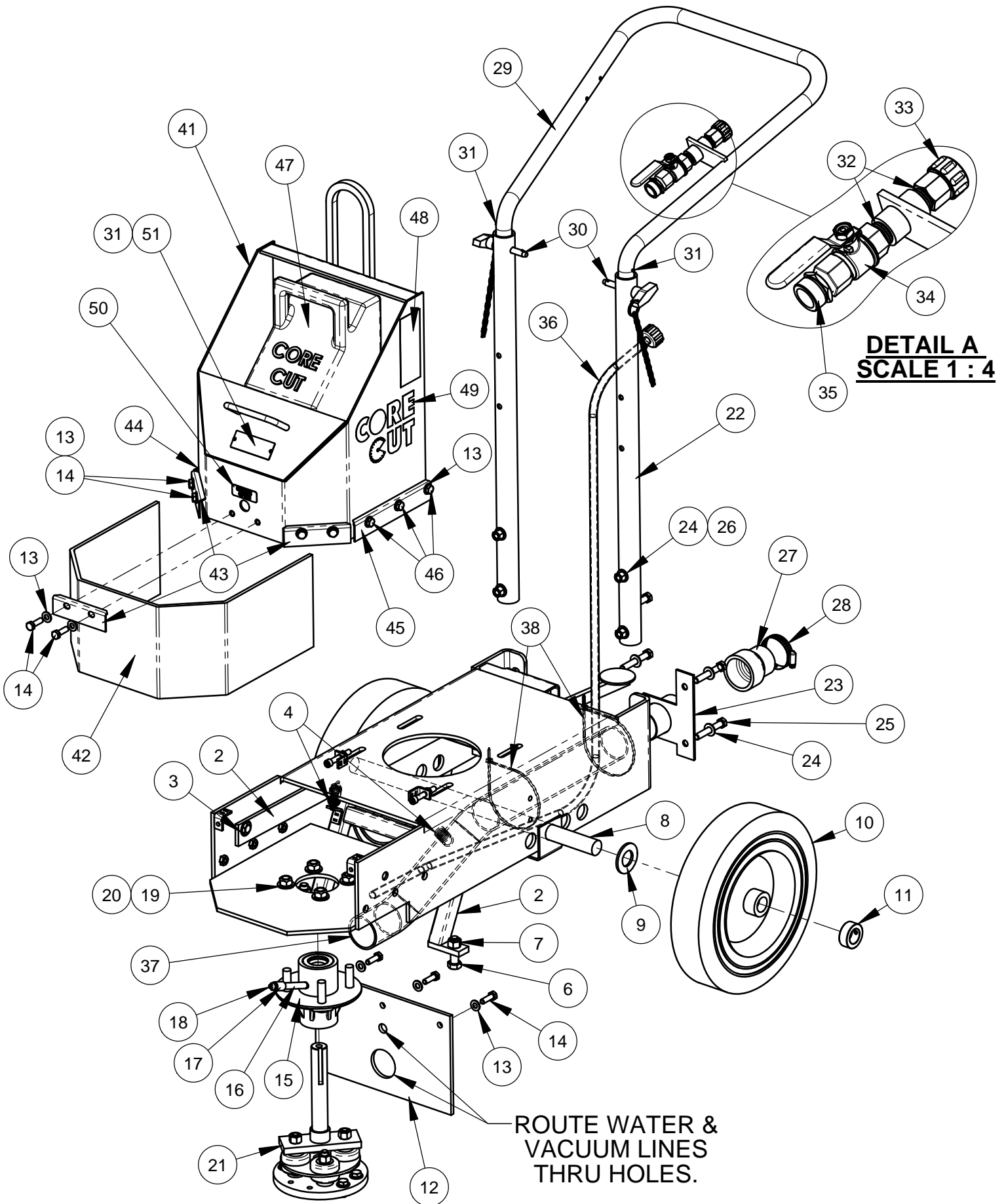
Table of Contents

<u>Description</u>	<u>Page No.</u>
Recommended Power Cords.....	2
Frame Assembly.....	4-5
Shaft and Flex Coupling.....	6
Gas Engine Group, 10 HP Honda.....	7
Gas Tank Assembly.....	8
Hydraulic Motor Group	9
Electric Motor Group, 2 HP.....	10
Electric Motor Group, 7.5 HP 1 Phase, 230V	11
Electric Motor Group, 7.5 HP 3 Phase, 230V	12
Electric Motor Group, 7.5 HP 3 Phase, 460V	13
Starter Box Assembly, 7.5 HP, 1 Phase, 230V.....	14
Starter Box Assembly, 7.5 HP, 3 Phase, 230V.....	15
Starter Box Assembly, 7.5 HP, 3 Phase, 460V,.....	16
Starter Box, 230V.....	18
Starter Box, 460V,	19
Starter Box, 230V.....	20
Starter Box, 460V,	22
Warranty.....	Rear Cover

Quick Reference Service Filters/ Belts

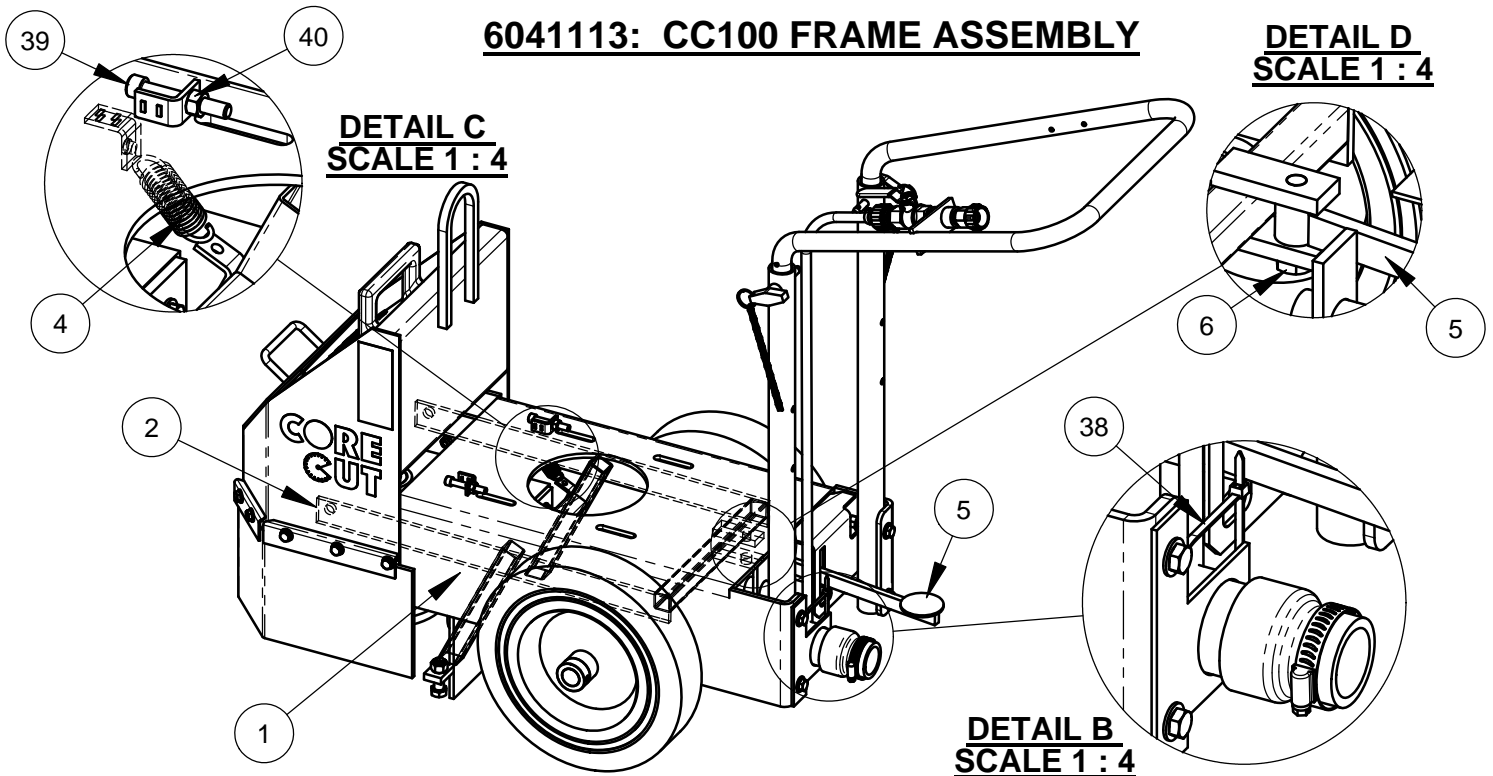
<u>DP Part No.</u>	<u>Description</u>	<u>Manufacturer's Part No.</u>
2703150	Fuel Filter for Honda	(Honda #17676-ZE2-W01)
2702121	Air Filter for 13HP Honda	(Honda #17211-ZF5-V01)
2704186	Air Filter for 9HP Briggs	(Briggs # 698413)
2500032	V-Belt (3) for Honda 13HP& Briggs 9HP Gas	(Gates #4L-390)
2500032	V-Belt (2) for Baldor 2HP, 1PH	(Gates #4L-390)
2500032	V-Belt (3) for Baldor 7.5HP, 3PH	(Gates #4L-390)

6041113: CC100 FRAME ASSEMBLY



6041113: CC100 FRAME ASSEMBLY

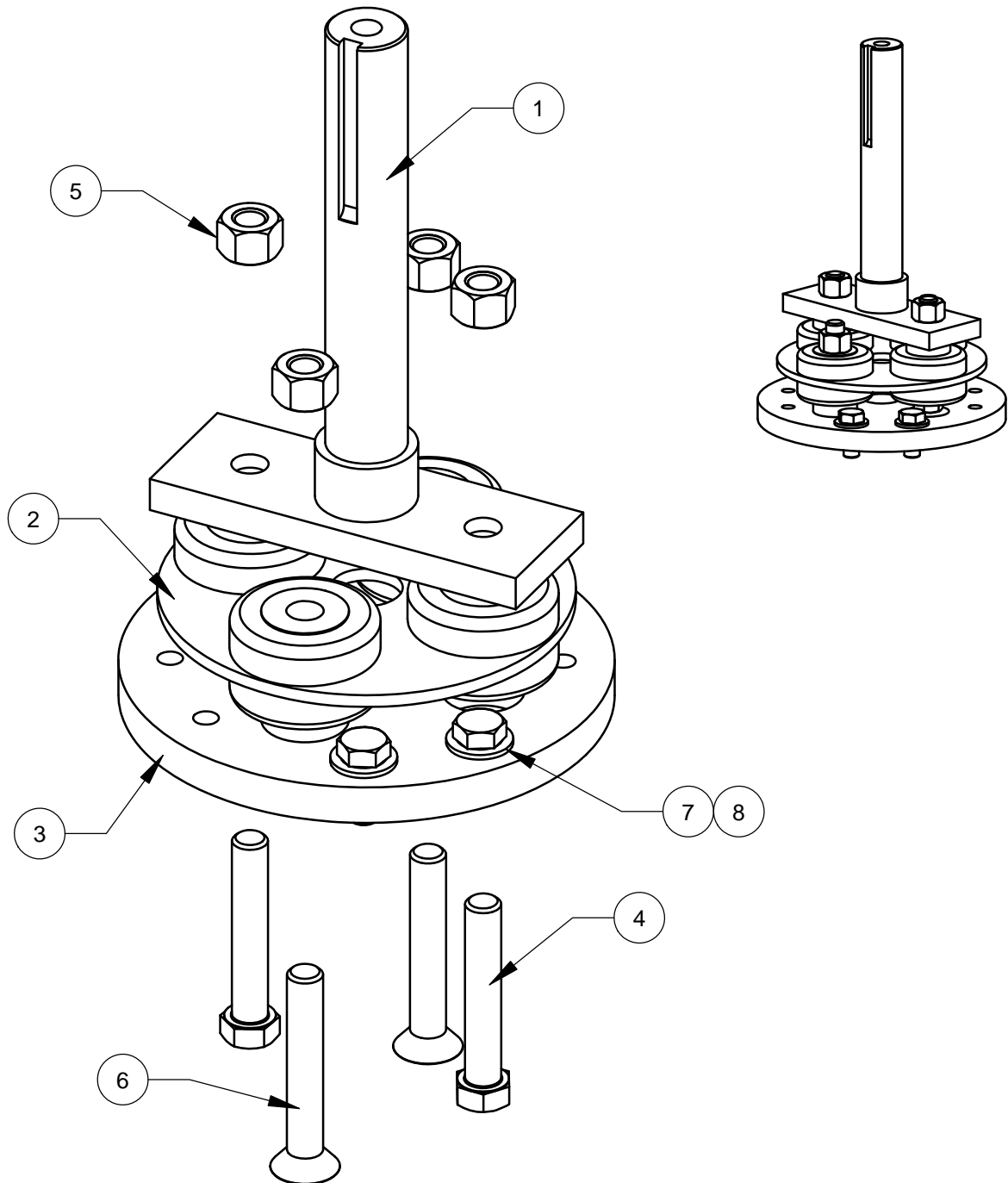
DETAIL D
SCALE 1 : 4



ITEM	PART NO.	QTY.	DESCRIPTION
1	6041033	1	Frame Base Weldment
2	6041047	1	Leg Weldment
3	2900948	2	Retainer, 1/2"
4	2501040	2	Spring, 3/4 x 2-3/4", Extension
5	6041048	1	Foot Pedal Weldment
6	2900139	3	Cap Screw, Hex Hd., 1/2-13 x 1-3/4"
7	2900037	2	Hex Nut, 1/2-13
8	6041049	1	Axle Shaft Weldment
9	2900295	2	Flat Washer, 1" SAE
10	2501039	2	Wheel, 12 x 3 x 1"
11	2500009	2	Set Collar, 1" ID
12	6041026	1	Splashguard, 7 x 11"
13	2900022	15	Flat Washer, 5/16" SAE
14	2900138	9	Cap Screw, Hex Hd., 5/16-18 x 1"
15	6041138	1	Flanged Hub W/ 1/8 Grease Port
16	3200179	1	Pipe Nipple, 1/8" NPT x 3"
17	3200388	1	1/8" Pipe Coupling
18	2900062	1	Grease Fitting, 1/8" NPT
19	2900058	4	Flat Washer, 1/2" SAE
20	2900949	4	Lug Nut, 1/2-20
21	6041146	1	CC100 Shaft/Coupling Assy.
22	6041056	2	Handle Support
23	6041063	1	Dust Port Bracket
24	2900014	8	Flat Washer, 3/8" SAE
25	2900596	4	Cap Screw, Hex Hd., 3/8-16 x 2-1/2"
26	2900018	4	Lock Nut, 3/8-16 Nylon

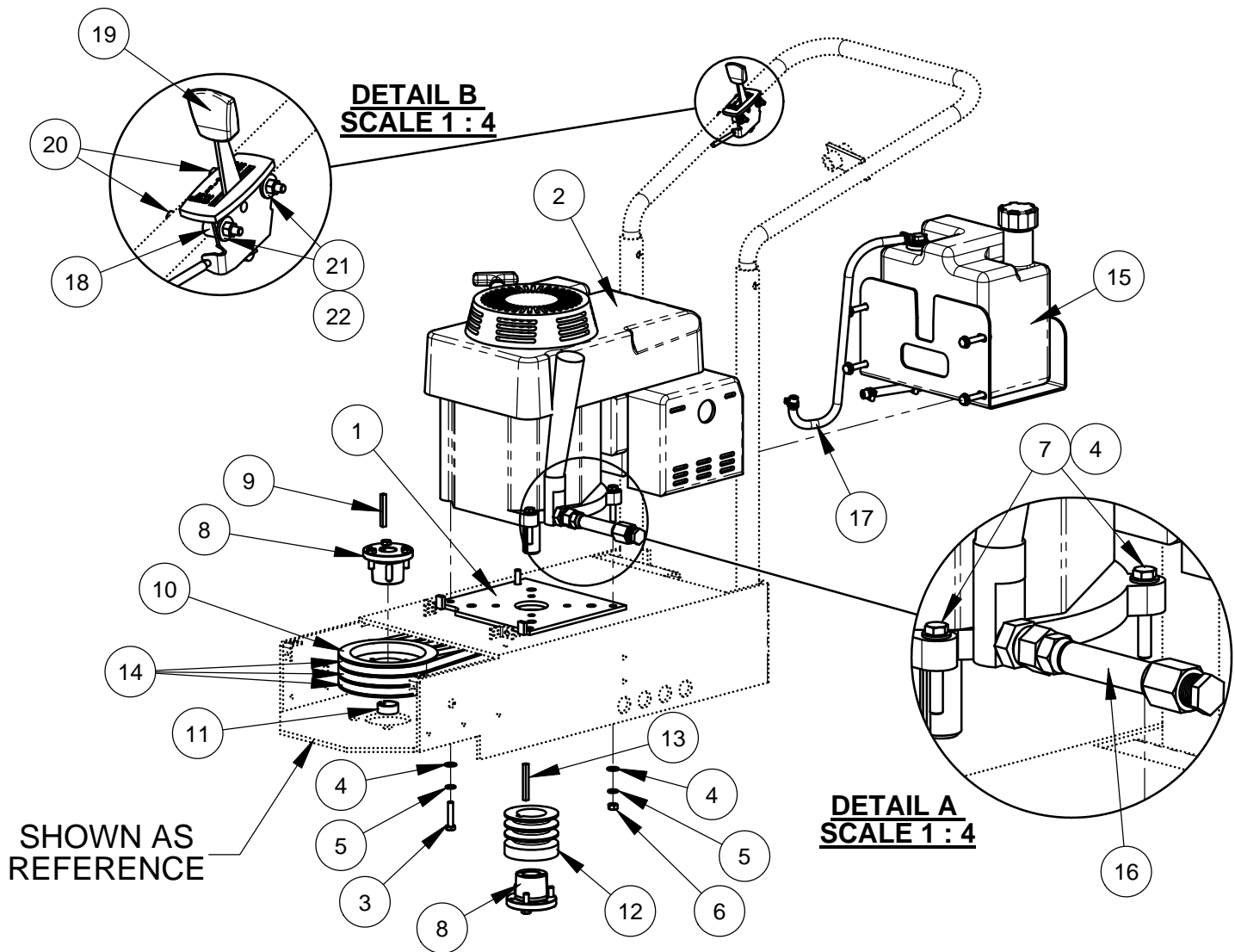
ITEM	PART NO.	QTY.	DESCRIPTION
27	2503177	1	Hose Reducer, 2.0"-1.5" ID
28	3200095	1	Hose Clamp #32
29	6041023	1	Handle Weldment
30	2900257	2	Lock Pin, T Handle, 3/8"
31	2900053	4	Rivet, 3/32" Dia.
32	3200008	2	Close Nipple, 1/2" NPT
33	3200022	1	Fitting, 1/2" F. Pipe to 3/4" F. Garden
34	3200027	1	Water Valve
35	3200155	1	Fitting, 1/2" M. Pipe to 3/4" M. Garden
36	6040299	1	Water Hose Assembly
37	6040595	1	Dust Hose, 2" ID x 27", PVC
38	2800278	2	Wire Tie, 14"
39	2900947	2	Cap Screw, Soc. Hd., 5/16-18 x 2"
40	2900141	2	Hex Nut, 5/16-18
41	6041022	1	Weight Box
42	6041027	1	Splash Guard, 6-1/2 x 32"
43	6041038	3	Guard Clasp, 4.275"
44	6041039	1	Guard Clasp, 7.75"
45	6041052	1	Guard Clasp, 7.75"
46	2900217	6	Cap Screw, Hex Hd., 5/16-18 x 1-1/4"
47	2501047	1	Weight
48	1800001	2	Warning Label
49	1800506	2	Core Cut Decal
50	1800504	1	Label, Grease Often
51	1800169	1	Serial Number Plate, US

6041146: CC100 SHAFT AND FLEX COUPLING



ITEM NO.	PART NUMBER	QTY.	DESCRIPTION
1	6041171	1	Blade Shaft Weldment
2	6041173	1	Flex Coupling
3	6041172	1	Disc Flange
4	2903061	2	Capscrew, Hex Hd., 7/16-14 x 2-1/2"
5	2900045	4	Lock Nut, 7/16-14 Nylon
6	2901072	2	Flat Hd., Soc., Hd., 7/16-14 x 2-3/4"
7	2900014	4	Flat Washer, 3/8" SAE
8	2900954	4	Cap Screw, Hex Hd., 3/8-24 x 7/8"

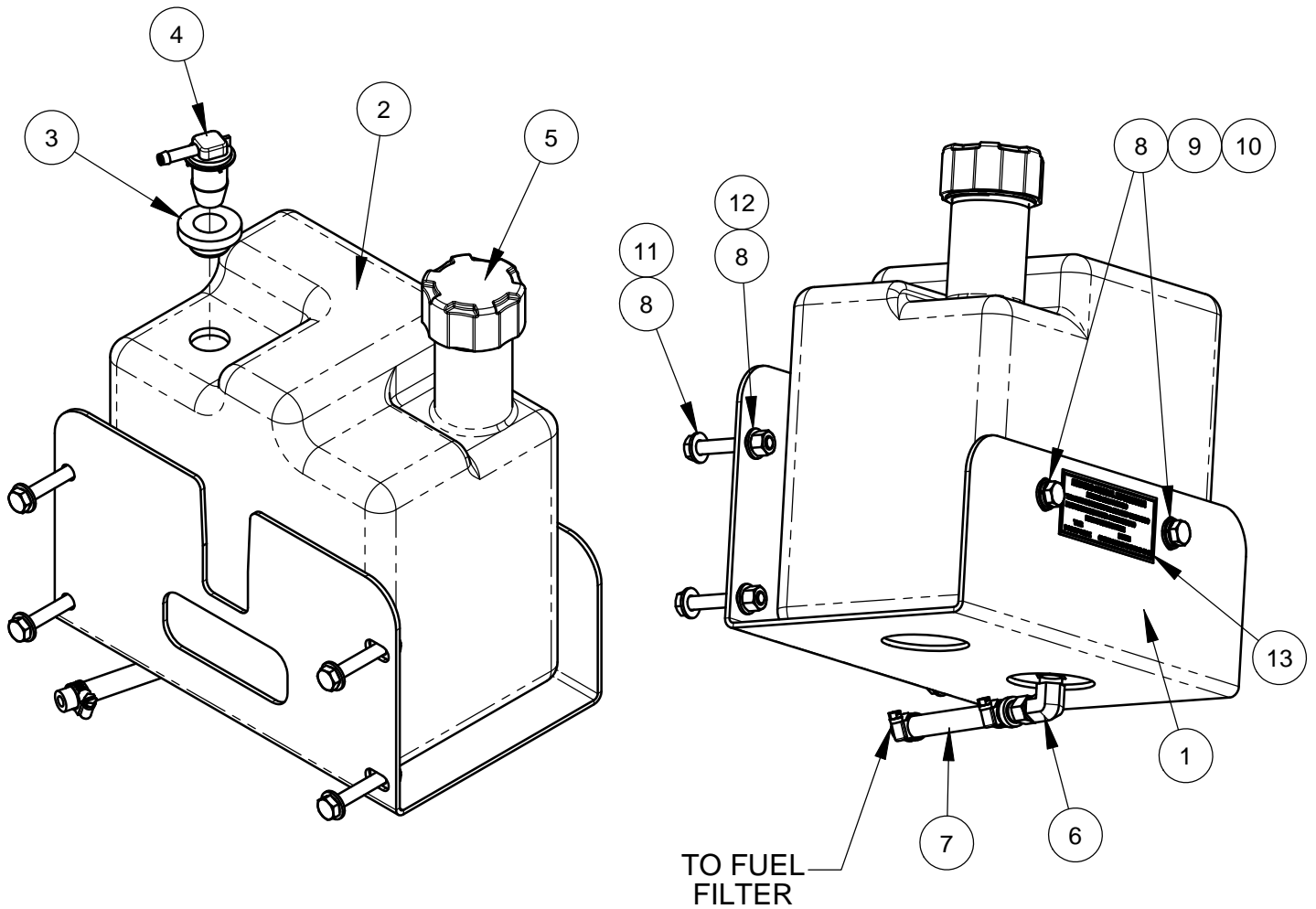
6010483 CC100 HONDA ENGINE GROUP, 10HP



ITEM	PART NO.	QTY.	DESCRIPTION
1	6048335	1	Engine Plate
2	2600259	1	Honda GXV390, Vertical Shaft
3	2900945	2	Cap Screw, Hex Hd., 5/16-24 x 1-1/2"
4	2900022	6	Flat Washer, 5/16" SAE
5	2900031	4	Lock Washer, 5/16" Split
6	2900946	2	Hex Nut, 5/16-24
7	2900944	2	Cap Screw, Hex Hd., 5/16-24 x 2"
8	2501044	2	Bushing, Taper Lock, w/Fasteners
	2900138	3	Cap Screw, Hex Hd., 5/16-18 x 1"
9	2501357	1	Key, 1/4" Sq., x 2.0"
10	2501043	1	Sheave, 3 Groove
11	6041042	1	Spacer, Blade Shaft
12	2501045	1	Sheave, 3.00 - 3 Groove
13	6048134	1	Key, 1/4" Sq. x 2-1/4"
14	2500032	3	V-Belt 4L-390
15	6017351	1	Gas Tank Assy., CC100/200

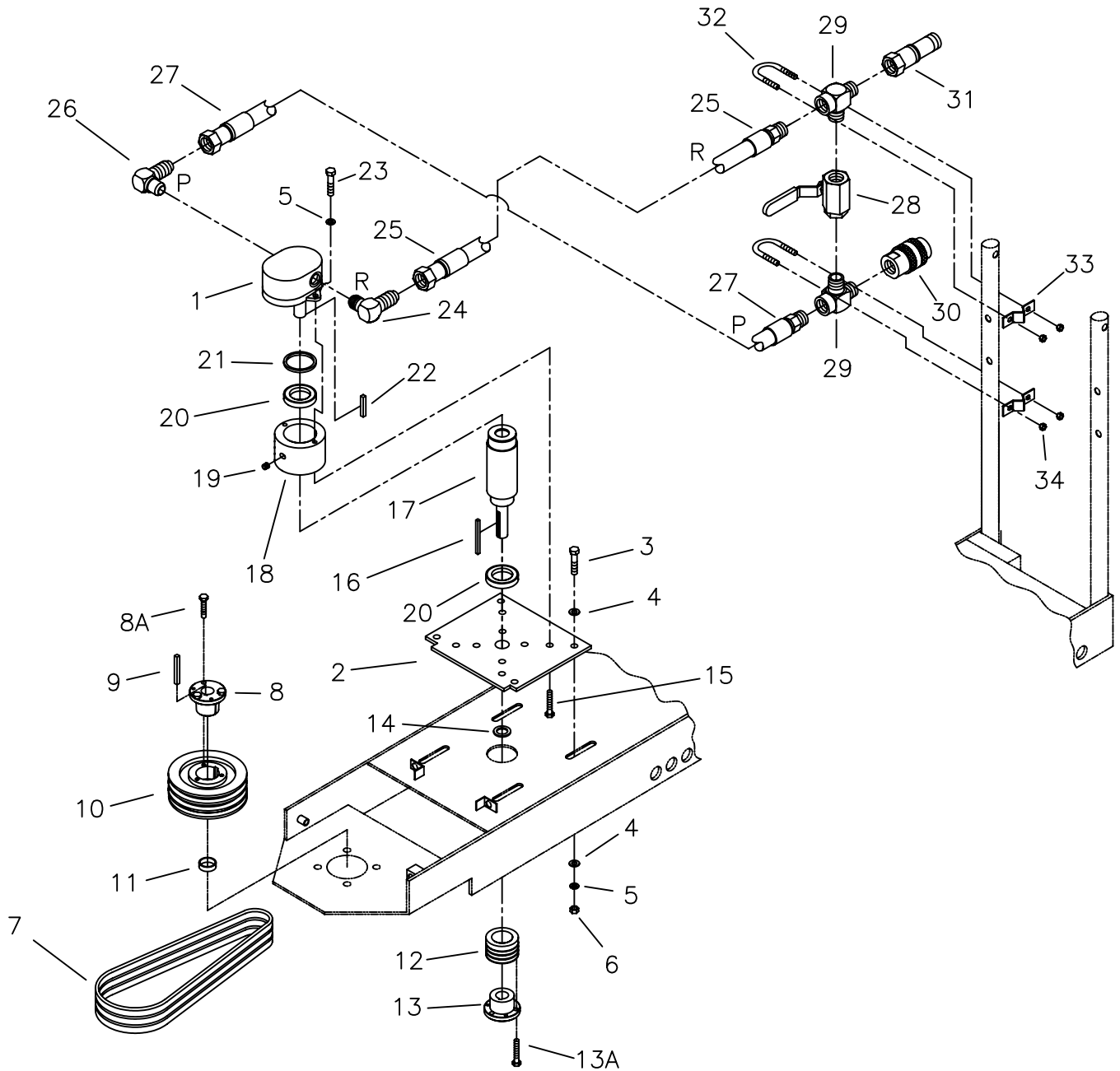
ITEM	PART NO.	QTY.	DESCRIPTION
16	6041121	1	Oil Drain Hose Assembly
	3200462	1	Fitting, M20 x 1.5 to 5/8" M. JIC
	3200440	1	Fitting, 5/8" F. to 1/2" M. JIC
	3200181	1	Fitting, 1/2" F. JIC to 1/2" Pushlok
	6010435	1	Hose, 1/2" I.D. x 3"
	3200163	1	Fitting, 1/2" F. Pipe to 1/2" Push Lock
	3200160	1	Plug, 1/2-14 NPT
17	6013200	1	1/4 x 19" Fuel Line W/ Clamps
	3200062	2	Hose Clamp #4
18	6041062	2	Throttle Spacer
19	2501046	1	Throttle Cable Assembly
20	2900597	2	Cap Screw, Hex Hd., M5-0.8 x 50mm
21	2900926	2	Flat Washer, M5
22	2900301	2	Lock Nut, M5-0.8 Nylon Insert
23	6041033	1	Frame Base Weldment
24	6041056	2	Handle Support
25	6041023	1	Handle Weldment

6017351 CC100/200 GAS TANK ASSEMBLY



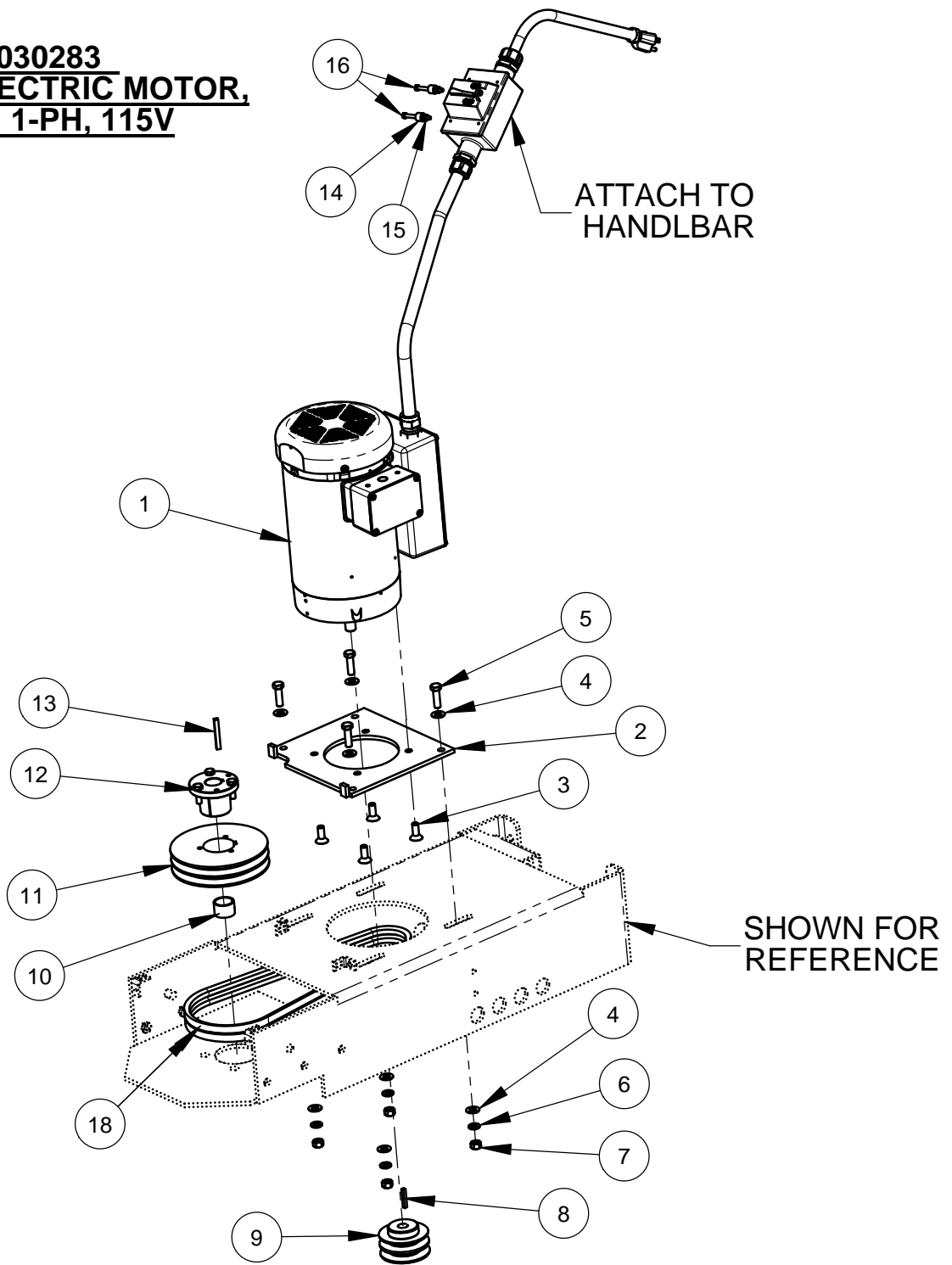
ITEM	PART NO.	QTY.	DESCRIPTION
1	6041046	1	Gas Tank Support
2	6010846	1	Fuel Tank, 1.5 Gallon
3	2506716	1	Grommet
4	2502484	1	Roll Over Vent, 1/4" Hose Barb
5	2506718	1	Fuel Tank Cap, 1-3/4"
6	3200057	1	Elbow, 1/4" M. Pipe to 1/4" M. JIC
7	6011718	1	Hose Assy., Fuel, 1/4"
	3200091	1	Fitting, 1/4" F. JIC to 1/4" Push Lock
	3200062	2	Hose Clamp #4
8	2900022	10	Flat Washer, 5/16" SAE
9	2900031	2	Lock Washer, 5/16" Split
10	2900329	2	Cap Screw, Hex Hd., M8-1.25 x 20mm
11	2900494	4	Cap Screw, Hex Hd., 5/16-18 x 2"
12	2900039	4	Lock Nut, 5/16-18 Nylon
13	1801716	1	Decal, EPA EVAP Standard

CC100 HYDRAULIC MOTOR GROUP, 5800532



Item	Part No.	Qty.	Description	Item	Part No.	Qty.	Description
1	4277587	1	Motor, Hydraulic Danfoss 1.55 CU. IN.	17	6048116	1	Hydraulic Spindle Shaft
2	6048335	1	Motor Adapter Plate	18	6041053	1	Hydraulic Block
3	2900005	4	Cap Screw, Hex Hd., 3/8-16 x 1"	19	2900062	1	Grease Fitting, 1/8" NPT
4	2900014	8	Flat Washer, 3/8" SAE	20	2500686	2	Bearing, 50mm x 90mm x 20mm
5	2900006	6	Lock Washer, 3/8" Split	21	4699901	1	Shim
6	2900033	4	Hex Nut, 3/8"-16	22	6048229	1	Key, 3/16 Sq. x 1-1/4"
7	2500032	3	V-Belt, 4L-390	23	2900357	2	Cap Screw, Soc Hd., 3/8-16 x 1-1/2"
8	2501044	1	Bushing, Taper Lock, 1" Bore	24	3200111	1	Elbow, Male, 3/4" JIC TO 1" Pipe
8A	2900138	3	Capscrew, Hex Hd., 5/16-18 x 1"	25	6048136	1	Hose, 3/4 x 28" (Return)
9	2501357	1	Key, 1/4" Sq. x 2"	26	3200110	1	Elbow, Male, 3/4" JIC TO 1/2" Pipe
10	2501043	1	Sheave, 5.80 - 3 Groove	27	6048135	1	Hose, 3/4 x 20" (Pressure)
11	6041042	1	Seal Spacer	28	3200005	1	Valve, 3/4" Ball
12	2501045	1	Sheave, 3.00 - 3 Groove	29	3200083	2	Tee, 3/4" Pipe Run
13	2501058	1	Bushing, Taper Lock, 1-1/8" Bore	30	3200100	1	Coupler, 3/4" Q.D.
13A	2900138	3	Capscrew, Hex Hd., 5/16-18 x 1"	31	3200101	1	Nipple, 3/4" Q.D.
14	3200004	1	Seal, 1-1/8" x 2" x 1/4"	32	2900379	2	U-Bolt, 1/4"-20
15	2900235	4	Cap Screw, Flat Soc. Hd., 3/8-16 x 1"	33	6048155	2	Clamp
16	6010169	1	Key, 1/4" Sq. x 1-1/4"	34	2900010	4	Lock Nut, 1/4"-20 Nylon

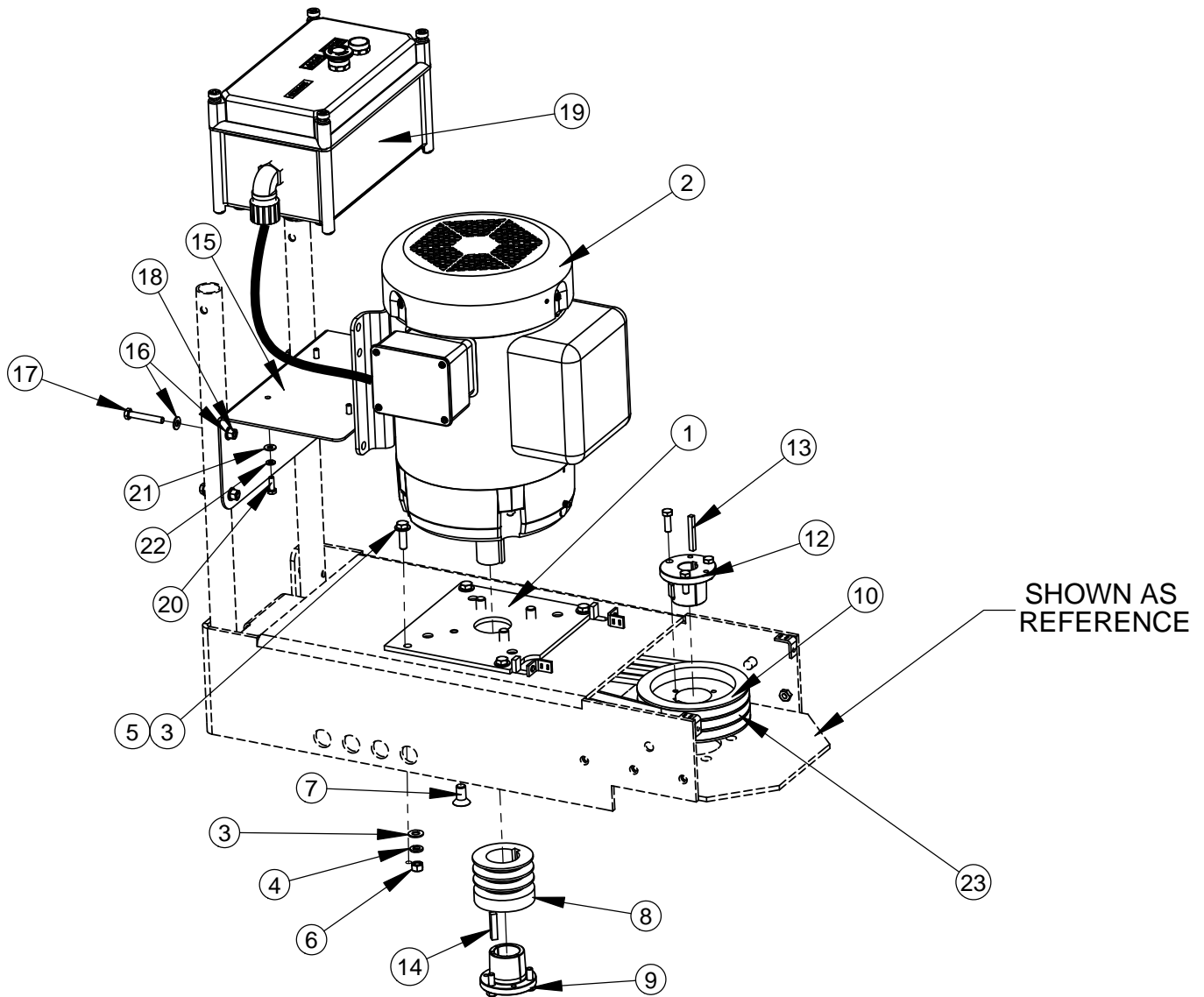
6030283
CC100 ELECTRIC MOTOR,
2HP, 1-PH, 115V



ITEM	PART NO.	QTY.	DESCRIPTION
1	2600271	1	2HP-1Ph Electric Motor w/ Drilled on/off switch
2	6041064	1	Engine Plate
3	2900235	4	Cap Screw, Flat Hd., 3/8-16 x 1"
4	2900014	8	Flat Washer, 3/8" SAE
5	2900013	4	Cap Screw, Hex Hd., 3/8-16 x 1- 1/4"
6	2900006	4	Lock Washer, 3/8" Split
7	2900033	4	Hex Nut, 3/8-16
8	6048229	1	Key, 3/16" Sq. x 1-1/4"

ITEM	PART NO.	QTY.	DESCRIPTION
9	2501177	1	Sheave, 3.00 - 2 Groove
10	6041001	1	Spacer, Blade Shaft
11	2501178	1	Sheave, 6.00-2 Groove
12	2501044	1	Bushing, Taper Lock, w/Fasteners
13	2501357	1	Key, 1/4" Sq., x 2.0"
14	6041062	2	Throttle Spacer
15	2900301	2	Lock Nut, M5-0.8 Nylon Insert
16	2900597	2	Cap Screw, Hex Hd., M5-0.8 x 50mm
18	2500032	2	V-Belt 4L-390

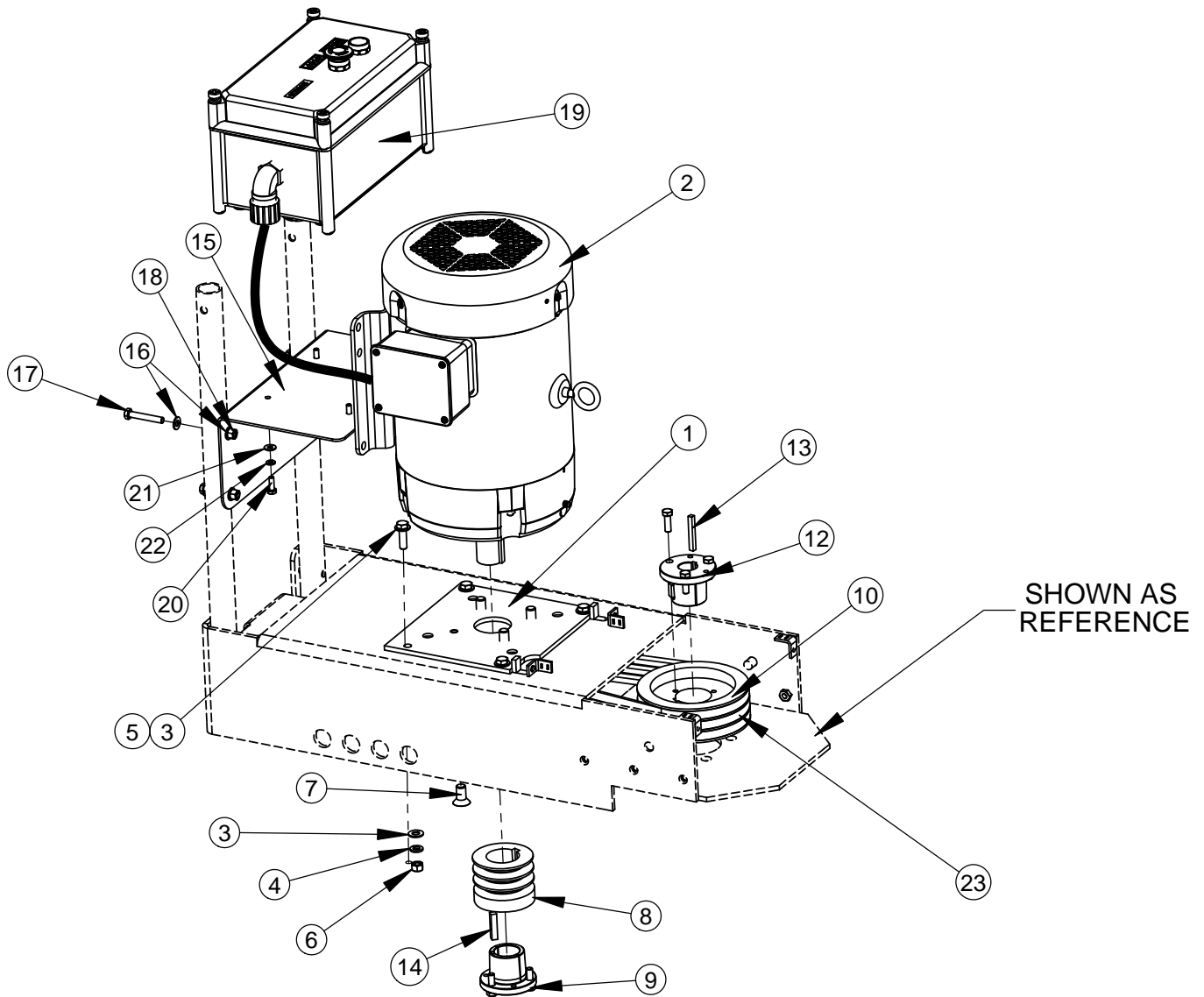
6011713 ELECTRIC MOTOR GROUP, 7-1/2 HP, 230V, 1 Ph



ITEM	PART NO.	QTY.	DESCRIPTION
1	6048335	1	Motor Adapter Plate
2	2600119	1	Electric Motor, 7-1/2 HP, 230V, 1 Ph, C-Face
3	2900014	8	Flat Washer, 3/8" SAE
4	2900006	4	Lock Washer, 3/8" Split
5	2900013	4	Cap Screw, Hex Hd., 3/8-16 x 1-1/4"
6	2900033	4	Hex Nut, 3/8-16
7	2900530	4	Cap Screw, Flat Hd., 1/2-13 x 1"
8	2501045	1	Sheave, 3.00 - 3 Groove
9	2500370	1	Bushing, Taper Lock, 1-3/8" Bore
	2500370B	1	Key, 3/8 x 5/16 x 3/4"
	2900138	3	Cap Screw, Hex Hd., 5/16-18 x 1"
10	2501043	1	Sheave, 6.00-3 Groove
11	6041042	1	Spacer, Blade Shaft

ITEM	PART NO.	QTY.	DESCRIPTION
12	2501044	1	Bushing, Taper Lock, 1" Bore, w/Fasteners
	2900138	3	Cap Screw, Hex Hd., 5/16-18 x 1"
	2501044B	1	Key, 3/8 x 5/16 x 3/4"
13	2501357	1	Key, 1/4" Sq., x 2.0"
14	6048046	1	Key, 5/16" Sq. x 1-1/2"
15	6041154	1	Bracket, Electric Box
16	2900022	8	Flat Washer, 5/16" SAE
17	2900494	4	Cap Screw, Hex Hd., 5/16-18 x 2"
18	2900039	4	Lock Nut, 5/16-18 Nylon
19	6048506	1	Starter Box Assy., 220-240V, 1PH.
20	2900144	4	Cap Screw, Hex Hd., 1/4-20 x 3/4"
21	2900009	4	Flat Washer, 1/4" SAE
22	2900024	4	Lock Washer, 1/4" Split
23	2500032	3	V-Belt 4L-390

6011740 ELECTRIC MOTOR GROUP, 7-1/2 HP, 230V

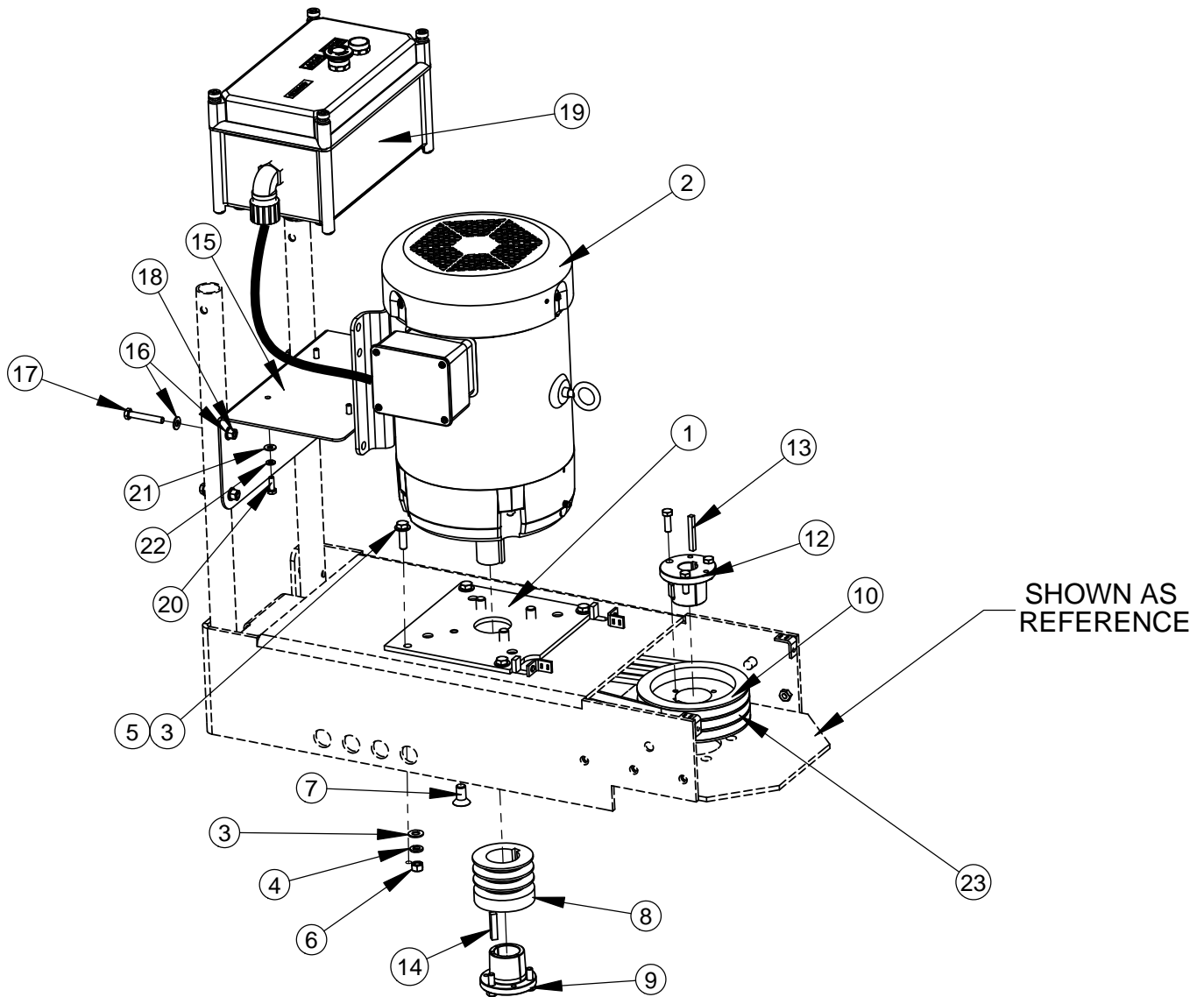


SHOWN AS
REFERENCE

ITEM	PART NO.	QTY.	DESCRIPTION
1	6048335	1	Motor Adapter Plate
2	2600128	1	Electric Motor, 7-1/2 HP, 3 Ph, C-Face
3	2900014	8	Flat Washer, 3/8" SAE
4	2900006	4	Lock Washer, 3/8" Split
5	2900013	4	Cap Screw, Hex Hd., 3/8-16 x 1-1/4"
6	2900033	4	Hex Nut, 3/8-16
7	2900530	4	Cap Screw, Flat Hd., 1/2-13 x 1"
8	2501045	1	Sheave, 3.00 - 3 Groove
9	2500370	1	Bushing, Taper Lock, 1-3/8" Bore
	2500370B	1	Key, 3/8 x 5/16 x 3/4"
	2900138	3	Cap Screw, Hex Hd., 5/16-18 x 1"
10	2501043	1	Sheave, 6.00-3 Groove
11	6041042	1	Spacer, Blade Shaft

ITEM	PART NO.	QTY.	DESCRIPTION
12	2501044	1	Bushing, Taper Lock, 1" Bore, w/Fasteners
	2900138	3	Cap Screw, Hex Hd., 5/16-18 x 1"
	2501044B	1	Key, 3/8 x 5/16 x 3/4"
13	2501357	1	Key, 1/4" Sq., x 2.0"
14	6048046	1	Key, 5/16" Sq. x 1-1/2"
15	6041154	1	Bracket, Electric Box
16	2900022	8	Flat Washer, 5/16" SAE
17	2900494	4	Cap Screw, Hex Hd., 5/16-18 x 2"
18	2900039	4	Lock Nut, 5/16-18 Nylon
19	4645261	1	Starter Box Assy., 220-240V
20	2900144	4	Cap Screw, Hex Hd., 1/4-20 x 3/4"
21	2900009	4	Flat Washer, 1/4" SAE
22	2900024	4	Lock Washer, 1/4" Split
23	2500032	3	V-Belt 4L-390

6011741 ELECTRIC MOTOR GROUP, 7-1/2 HP, 460V

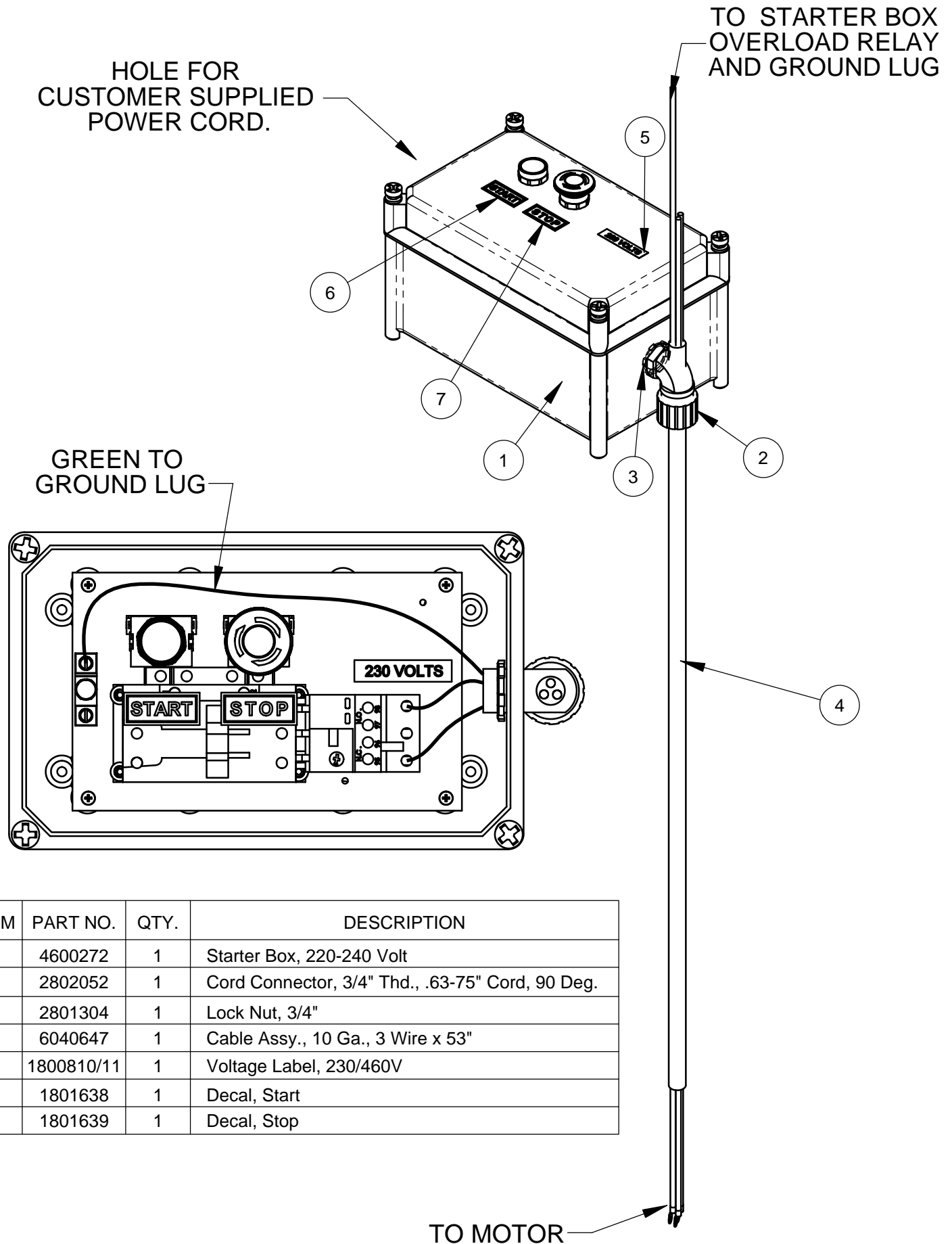


SHOWN AS REFERENCE

ITEM	PART NO.	QTY.	DESCRIPTION
1	6048335	1	Motor Adapter Plate
2	2600128	1	Electric Motor, 7-1/2 HP, 3 Ph, C-Face
3	2900014	8	Flat Washer, 3/8" SAE
4	2900006	4	Lock Washer, 3/8" Split
5	2900013	4	Cap Screw, Hex Hd., 3/8-16 x 1-1/4"
6	2900033	4	Hex Nut, 3/8-16
7	2900530	4	Cap Screw, Flat Hd., 1/2-13 x 1"
8	2501045	1	Sheave, 3.00 - 3 Groove
9	2500370	1	Bushing, Taper Lock, 1-3/8" Bore
	2500370B	1	Key, 3/8 x 5/16 x 3/4"
	2900138	3	Cap Screw, Hex Hd., 5/16-18 x 1"
10	2501043	1	Sheave, 6.00-3 Groove
11	6041042	1	Spacer, Blade Shaft

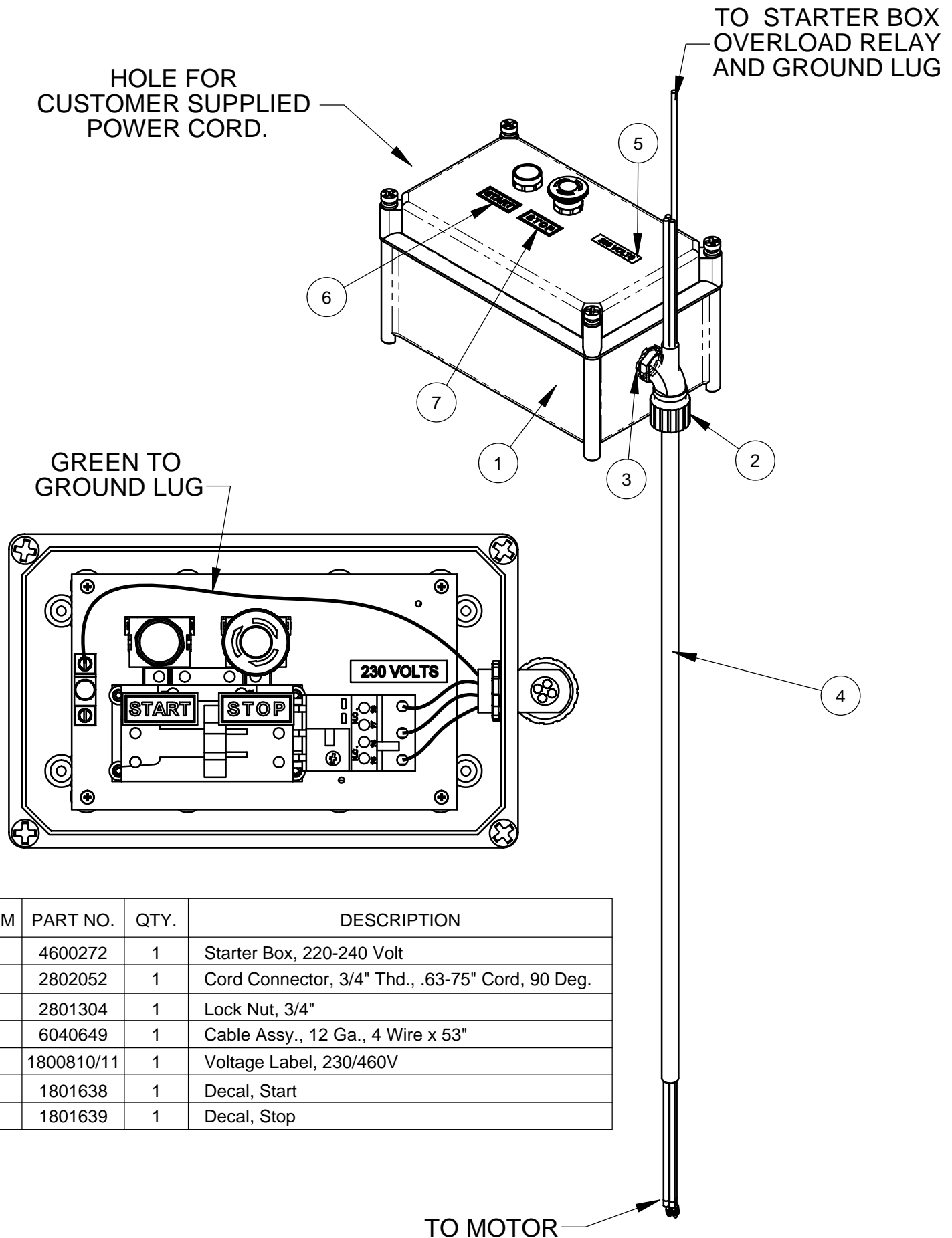
ITEM	PART NO.	QTY.	DESCRIPTION
12	2501044	1	Bushing, Taper Lock, 1" Bore, w/Fasteners
	2900138	3	Cap Screw, Hex Hd., 5/16-18 x 1"
	2501044B	1	Key, 3/8 x 5/16 x 3/4"
13	2501357	1	Key, 1/4" Sq., x 2.0"
14	6048046	1	Key, 5/16" Sq. x 1-1/2"
15	6041154	1	Bracket, Electric Box
16	2900022	8	Flat Washer, 5/16" SAE
17	2900494	4	Cap Screw, Hex Hd., 5/16-18 x 2"
18	2900039	4	Lock Nut, 5/16-18 Nylon
19	4645262	1	Starter Box Assy., 415-480V
20	2900144	4	Cap Screw, Hex Hd., 1/4-20 x 3/4"
21	2900009	4	Flat Washer, 1/4" SAE
22	2900024	4	Lock Washer, 1/4" Split
23	2500032	3	V-Belt 4L-390

6048506 STARTER BOX ASSEMBLY, 220-240 VOLT, 1 PH



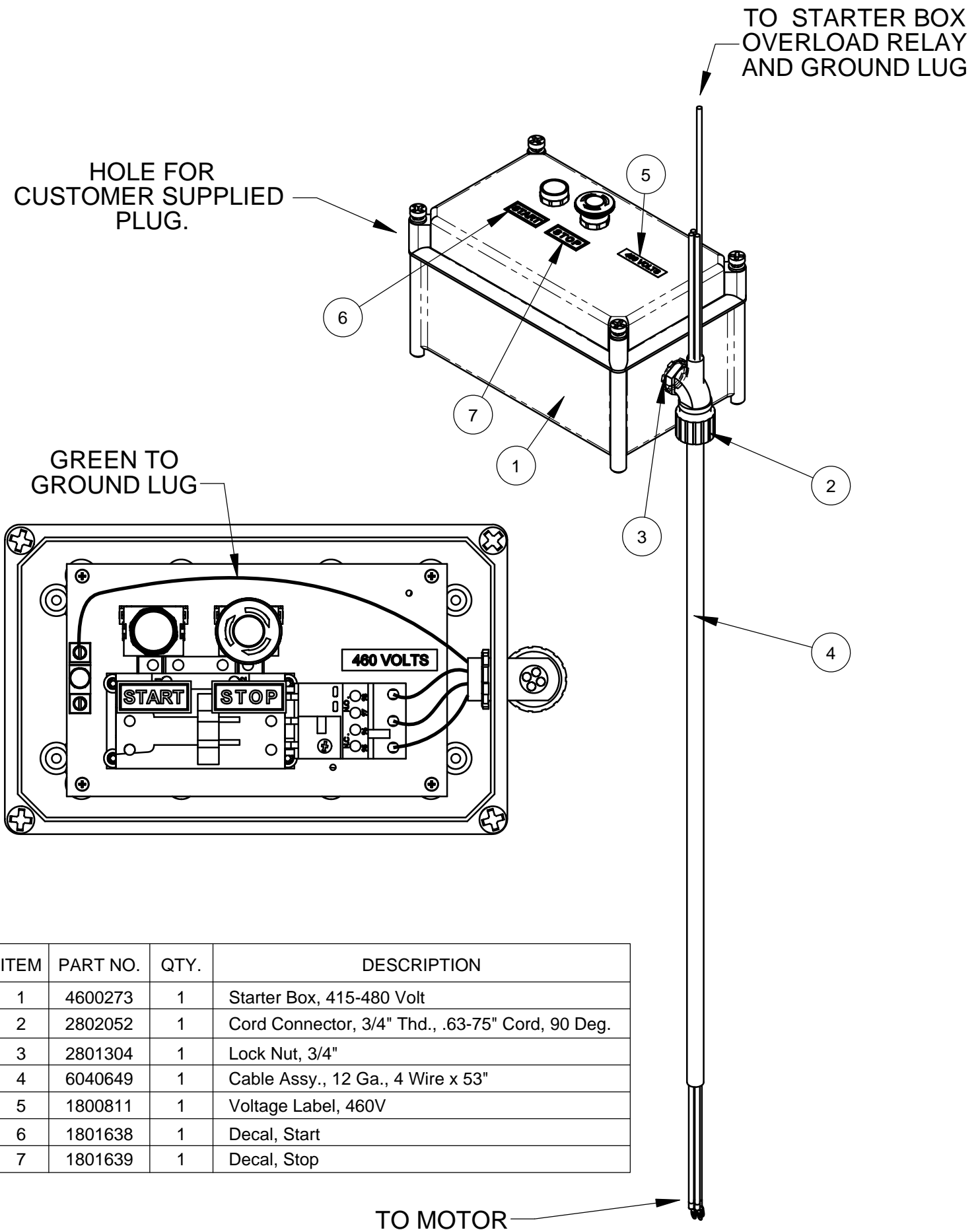
ITEM	PART NO.	QTY.	DESCRIPTION
1	4600272	1	Starter Box, 220-240 Volt
2	2802052	1	Cord Connector, 3/4" Thd., .63-75" Cord, 90 Deg.
3	2801304	1	Lock Nut, 3/4"
4	6040647	1	Cable Assy., 10 Ga., 3 Wire x 53"
5	1800810/11	1	Voltage Label, 230/460V
6	1801638	1	Decal, Start
7	1801639	1	Decal, Stop

4645261 STARTER BOX ASSEMBLY, 220-240 VOLT



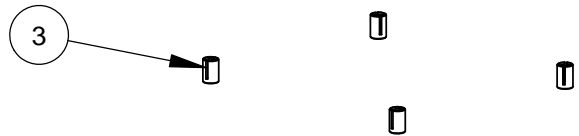
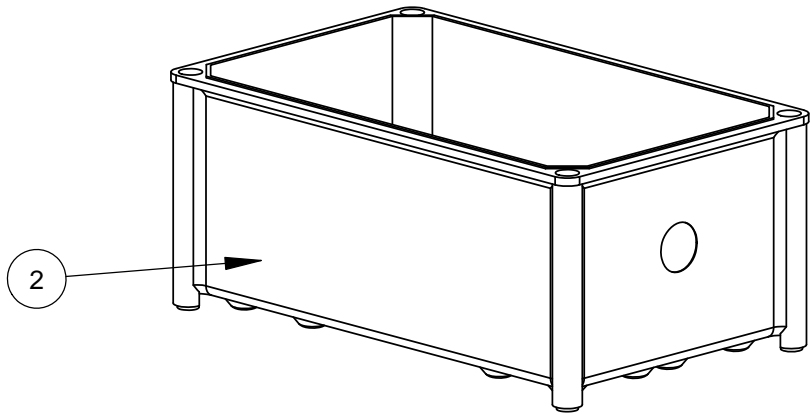
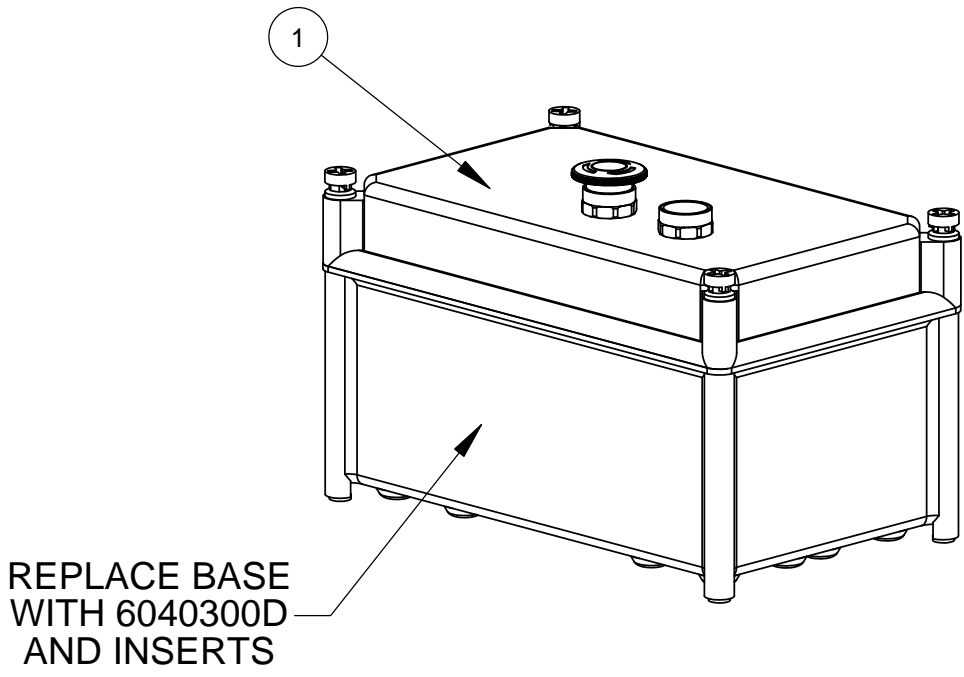
ITEM	PART NO.	QTY.	DESCRIPTION
1	4600272	1	Starter Box, 220-240 Volt
2	2802052	1	Cord Connector, 3/4" Thd., .63-75" Cord, 90 Deg.
3	2801304	1	Lock Nut, 3/4"
4	6040649	1	Cable Assy., 12 Ga., 4 Wire x 53"
5	1800810/11	1	Voltage Label, 230/460V
6	1801638	1	Decal, Start
7	1801639	1	Decal, Stop

4645262 STARTER BOX ASSEMBLY, 415-480 VOLT



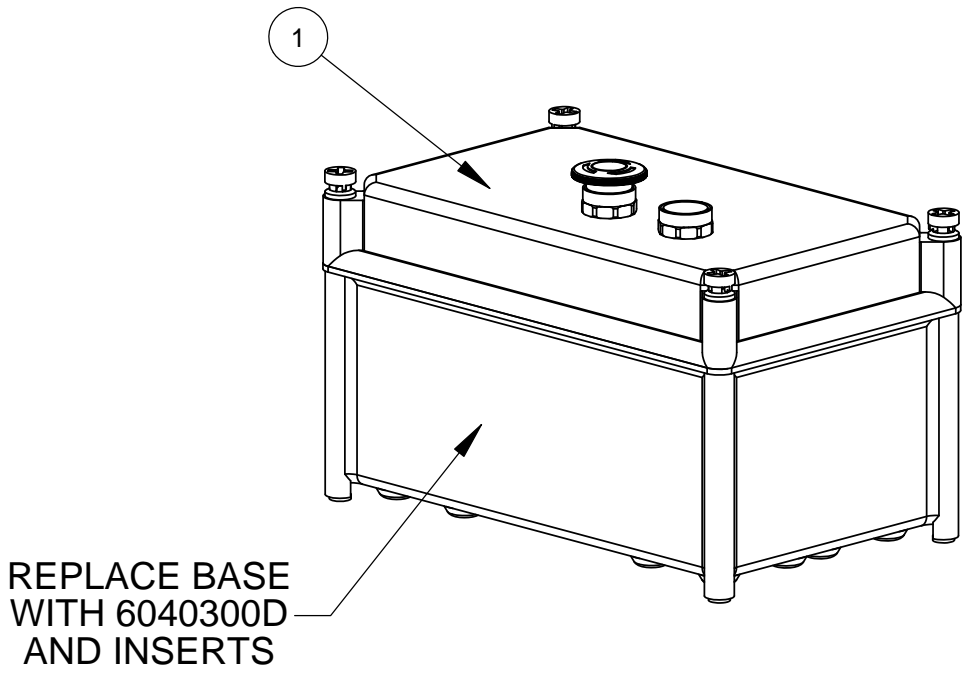
ITEM	PART NO.	QTY.	DESCRIPTION
1	4600273	1	Starter Box, 415-480 Volt
2	2802052	1	Cord Connector, 3/4" Thd., .63-75" Cord, 90 Deg.
3	2801304	1	Lock Nut, 3/4"
4	6040649	1	Cable Assy., 12 Ga., 4 Wire x 53"
5	1800811	1	Voltage Label, 460V
6	1801638	1	Decal, Start
7	1801639	1	Decal, Stop

4600272 STARTER BOX, 220-240 VOLT

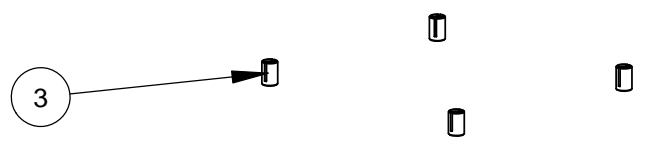
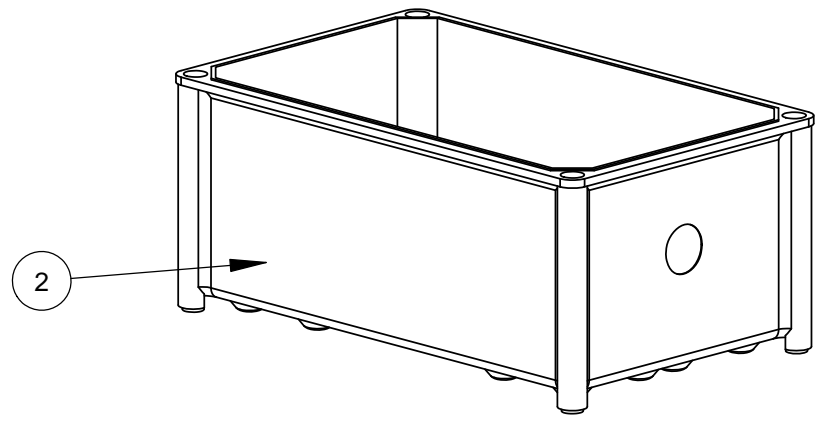


ITEM	PART NO.	QTY.	DESCRIPTION
1	2801032	1	Starter Box, 220-240V
2	6040300D	1	Starter Box Base
3	2901332	4	1/4-20 Threaded Insert

4600273 STARTER BOX, 415-480 VOLT

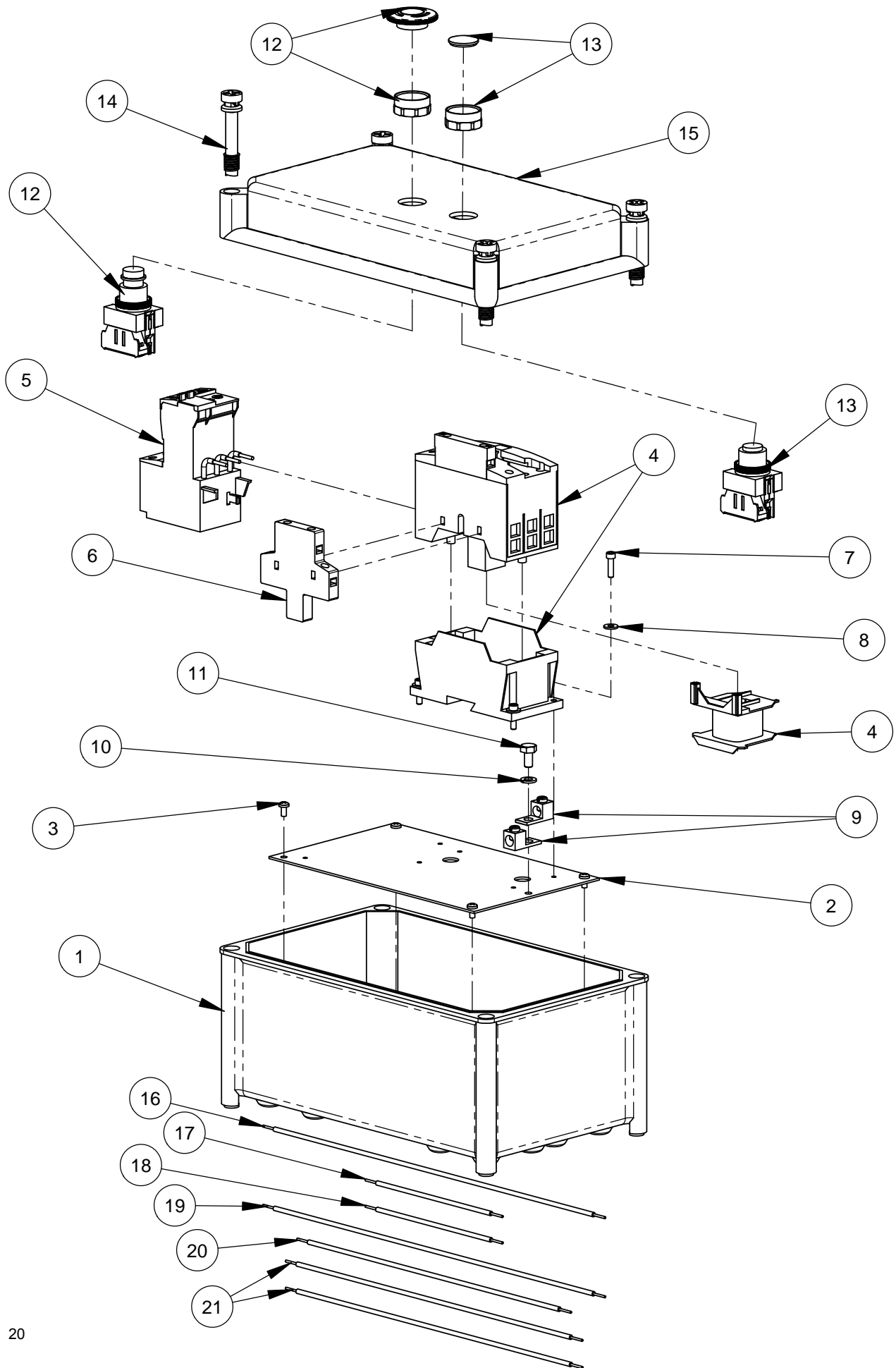


REPLACE BASE
WITH 6040300D
AND INSERTS

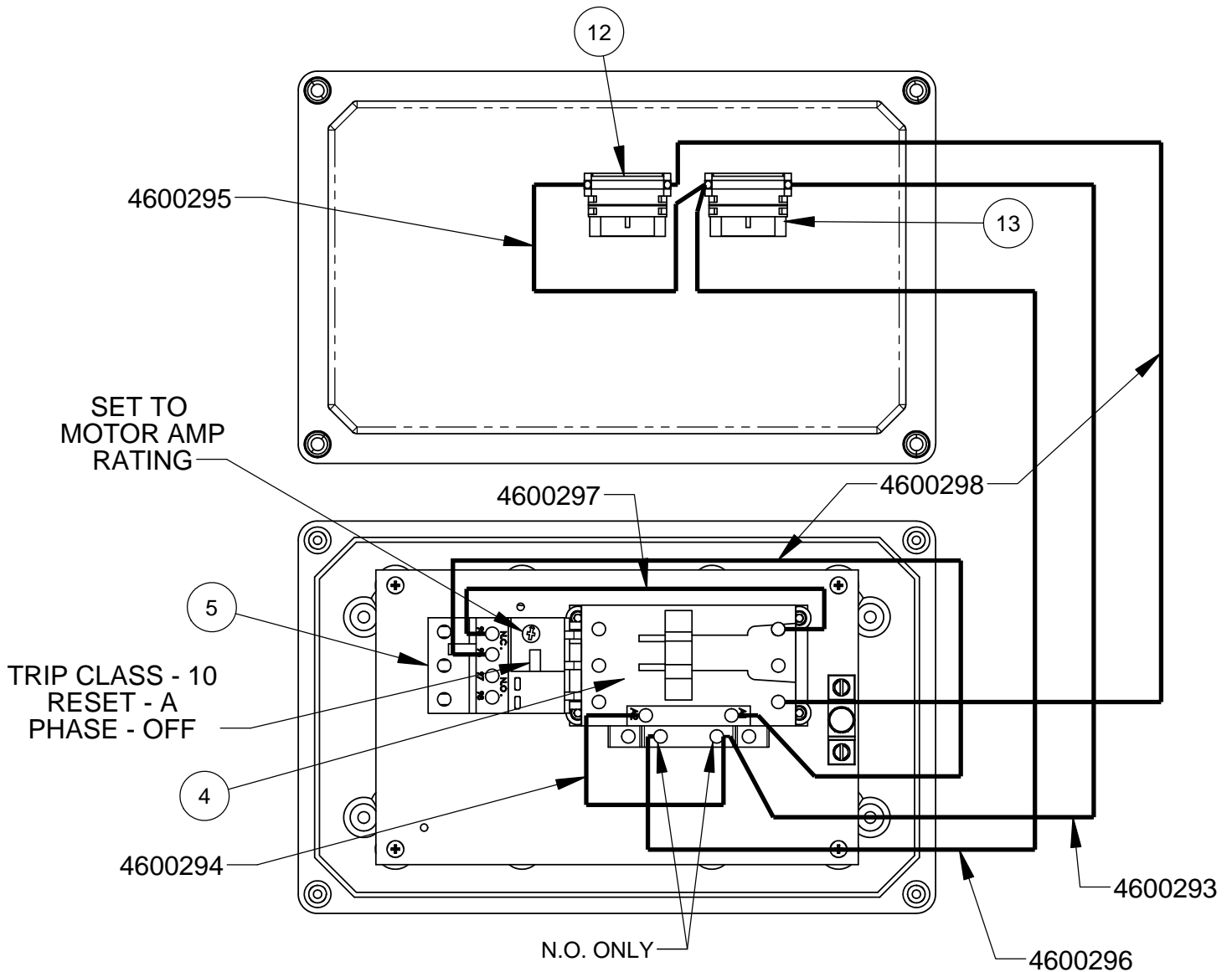


ITEM	PART NO.	QTY.	DESCRIPTION
1	2801031	1	Starter Box, 415-480V
2	6040300D	1	Starter Box Base
3	2901332	4	1/4-20 Threaded Insert

2801032 STARTER BOX, 220-240 VOLT



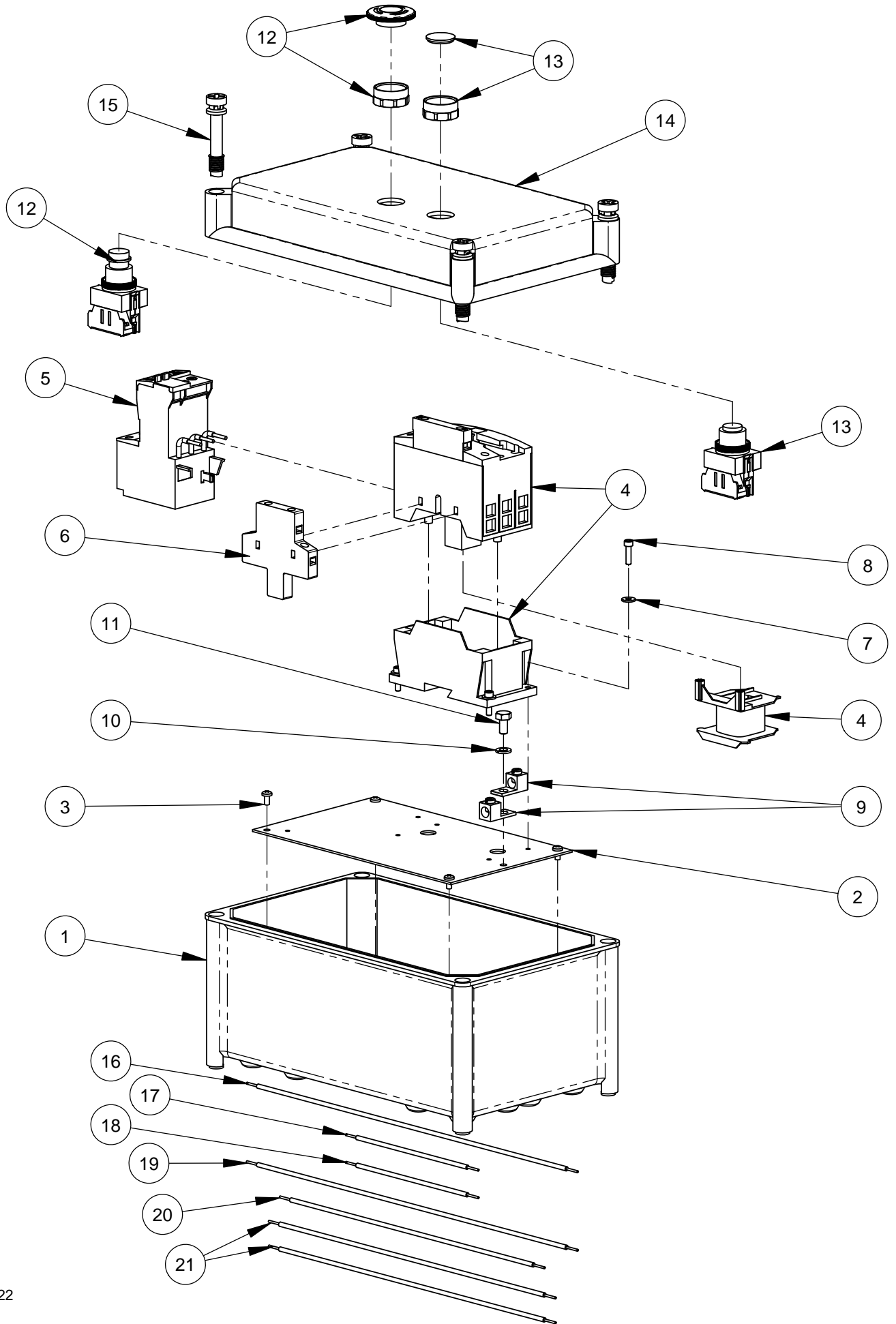
2801032 STARTER BOX, 220-240 VOLT



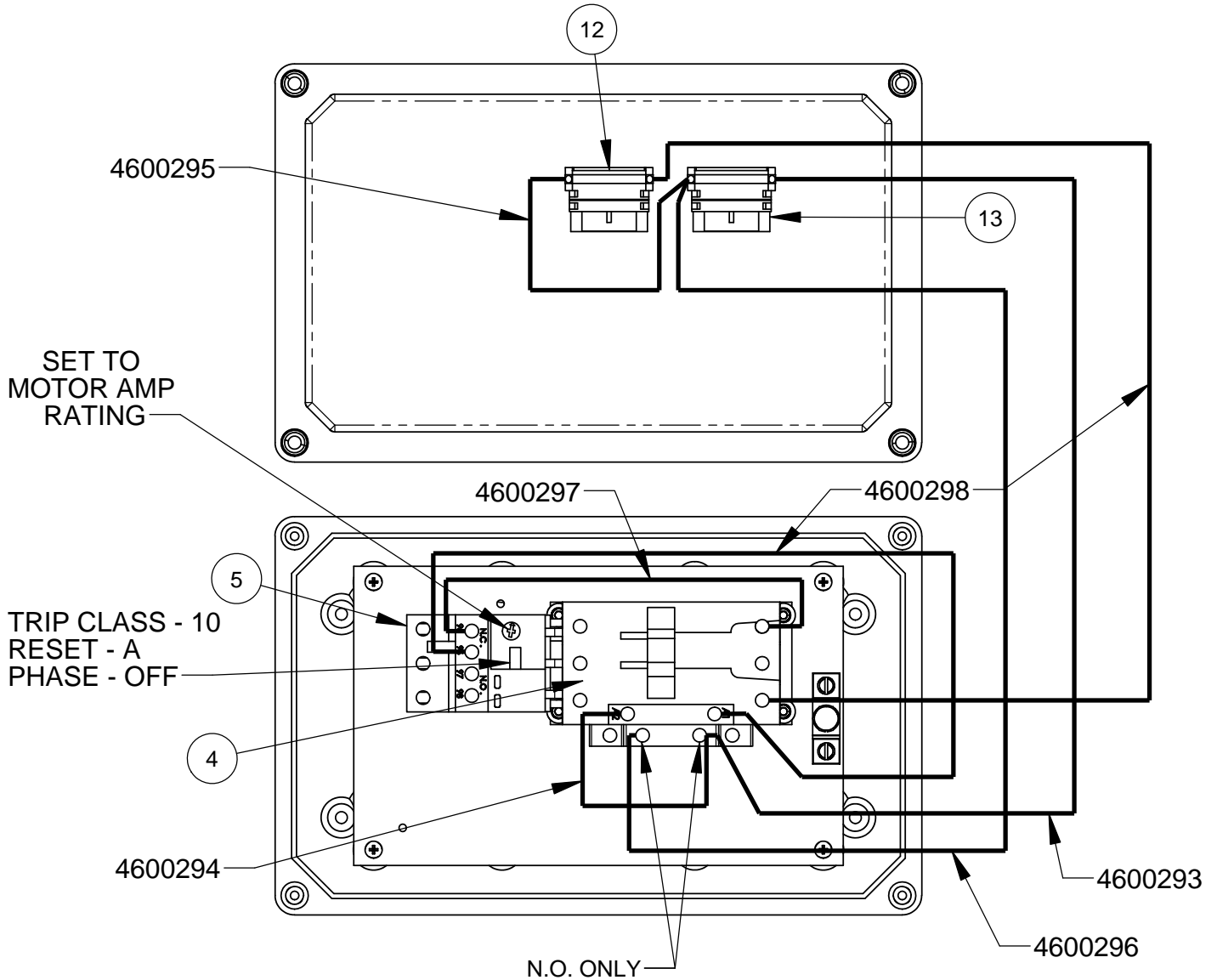
ITEM	PART NO.	QTY.	DESCRIPTION
1	2702419	1	Electrical Box (Base)
2	6040598	1	Sub-plate
3	2900676	4	Machine Screw, Pan Hd., M4-0.7 x 8mm
4	2801704	1	Contactor, 220-240V (includes coil)
	2801265	1	Replacement Coil, 220-240V
5	2801699	1	Overload Relay, 9-45 AMP
6	2801676	1	Auxiliary Contacts, 1NO-NC
7	2901827	4	Cap Screw, Soc. Hd., #8-32 x 5/8"
8	2901437	4	Flat Washer, #10
9	2800315	2	Grounding Lug
10	2900024	1	Lock Washer, 1/4" Split

ITEM	PART NO.	QTY.	DESCRIPTION
11	2901891	1	Cap Screw, Hex Hd., 1/4-28 x 1/2"
12	2801636	1	E-Stop Switch, 600V
13	2801639	1	Pushbutton, N.O., 600V
14	2701414	4	Fastener, Electrical Box Top
15	6048296	1	Electric Box Cover, 2 Hole
16	4600293	1	Wire, 14 Gage, Yellow, 15"
17	4600294	1	Wire, 14 Gage, Yellow, 6"
18	4600295	1	Wire, 14 Gage, Black, 6"
19	4600296	1	Wire, 14 Gage, Black, 15"
20	4600297	1	Wire, 14 Gage, Red, 12"
21	4600298	2	Wire, 14 Gage, Red, 13"

2801031 STARTER BOX, 415-480 VOLT



2801031 STARTER BOX, 415-480 VOLT



ITEM	PART NO.	QTY.	DESCRIPTION
1	2702419	1	Electrical Box (Base)
2	6040598	1	Sub-plate
3	2900676	4	Machine Screw, Pan Hd., M4-0.7 x 8mm
4	2801707	1	Contactor, 415-480V (Includes Coil)
	2801266	1	Replacement Coil, 415-480V
5	2801699	1	Overload Relay, 9-45 AMP
6	2801676	1	Auxiliary Contacts, 1NO-NC
7	2901437	4	Flat Washer, #10
8	2901827	4	Cap Screw, Soc. Hd., #8-32 x 5/8"
9	2800315	2	Grounding Lug
10	2900024	1	Lock Washer, 1/4" Split

ITEM	PART NO.	QTY.	DESCRIPTION
11	2901891	1	Cap Screw, Hex Hd., 1/4-28 x 1/2"
12	2801636	1	E-Stop Switch, 600V
13	2801639	1	Pushbutton, N.O., 600V
14	6048296	1	Electric Box Cover, 2 Hole
15	2701414	4	Fastener, Electrical Box Top
16	4600293	1	Wire, 14 Gage, Yellow, 15"
17	4600294	1	Wire, 14 Gage, Yellow, 6"
18	4600295	1	Wire, 14 Gage, Black, 6"
19	4600296	1	Wire, 14 Gage, Black, 15"
20	4600297	1	Wire, 14 Gage, Red, 12"
21	4600298	2	Wire, 14 Gage, Red, 13"

EQUIPMENT AND PARTS WARRANTY

Diamond Products warrants all equipment manufactured by it against defects in workmanship or materials for a period of one (1) year from the date of shipment to Customer.

The responsibility of Diamond Products under this Warranty is limited to replacement or repair of defective parts at Diamond Products' Elyria, Ohio factory, or at a point designated by it, of such parts as shall appear to us upon inspection at such parts, to have been defective in material or workmanship, with expense for transportation and labor borne by Customer.

In no event shall Diamond Products be liable for consequential or incidental damages arising out of the failure of any Product to operate properly.

Integral units such as engines, electric motors, batteries, transmissions, etc., are excluded from this Warranty and are subject to the prime manufacturer's warranty.

THIS WARRANTY IS IN LIEU OF ALL OTHER WARRANTIES, EXPRESSED OR IMPLIED, AND ALL SUCH OTHER WARRANTIES ARE HEREBY DISCLAIMED.



333 Prospect Street, Elyria, Ohio 44035
(440) 323-4616 • (800) 321-5336 • Fax (440) 323-8689
www.diamondproducts.com