

S/N

Thank you for purchasing a WHEELMAN® Mixer from an IMER U.S.A. dealer. Your decision is an intelligent one. No other mixer in the world today offers the features and value of the WHEELMAN® Mixer.

- * After the initial set-up the **WHEELMAN®** Mixer can be knocked down or reassembled in just minutes.
- * Direct drive drum rotation, efficient and safe.
- * Portable, the large 14" wheels make moving the **WHEELMAN®** a breeze around the home or job site.
- * Compact, the clever design allows the **WHEELMAN®** to fit into the trunk or hatchback area of almost all cars and trucks.
- * Finish, the high quality of paint and construction components ensure a piece of equipment that you will be proud to own for years.

At IMER U.S.A. we continually search for ways to better serve our customers. Should you have an idea or thought to share with us regarding this Product we would appreciate hearing from you. Our motto is "Tools and Services for the 21st Century". We look forward to delivering the goods.

Thank you again for your purchase,



Mace T. Coleman, Jr.
President, Imer U.S.A. Inc.
3654 Enterprise Avenue
Hayward, 94545 California
Toll Free (800)275-5463
Office: (510)670-7970
Fax (510) 783-4255

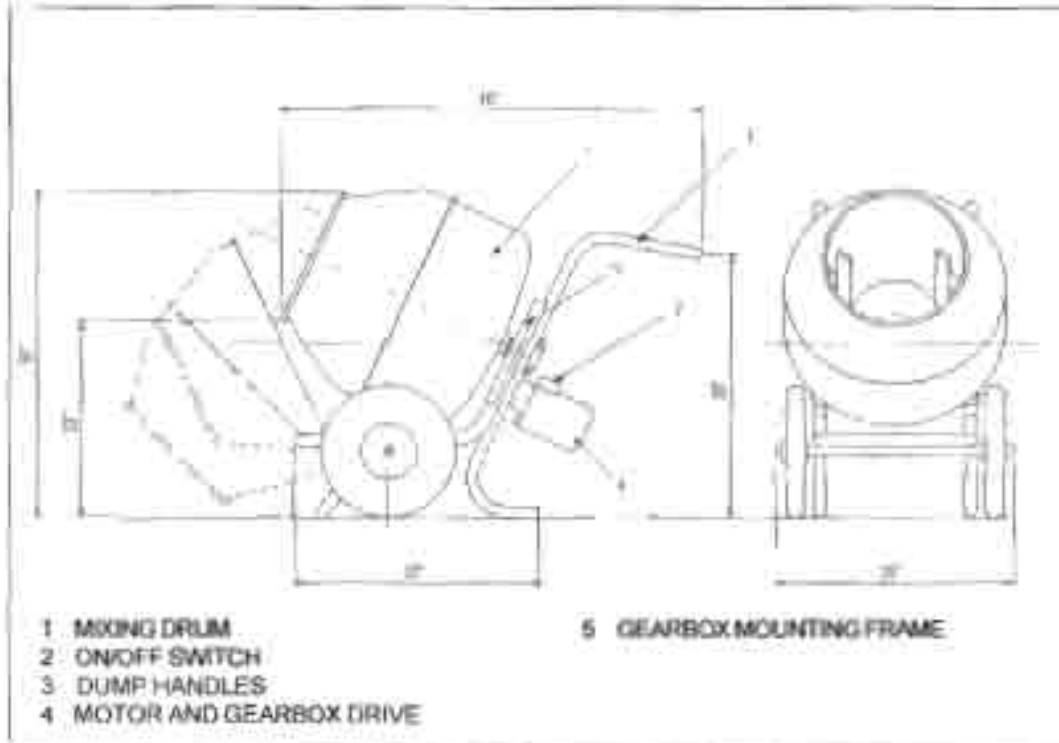


TABLE OF CONTENTS

TECHNICAL DATA	page 4
NOISE EMISSION LEVEL.....	page 5
WIRING DIAGRAM	page 5
SAFETY NOTES	page 6
ASSEMBLY THE WHEELMAN WITH ELECTRIC MOTOR	page 7
ASSEMBLY THE WHEELMAN WITH ENDOTHERMIC MOTOR	page 9
MOVING THE WHEELMAN.....	page10
OPERATING THE WHEELMAN	page11
MAINTENANCE AND CLEANING.....	page11
ORDERING SPARE PARTS	page11
SPARE PARTS DIAGRAMS.....	page12
WARRANTY	page18



TECHNICAL DATA



Drum capacity	6 cubic feet
Batch Output	2.5 cubic feet, 270 lbs. *
Drum Diameter	24 inches
Wheels	14.5" x 2.5"
Single Phase electric motor	0.5 H.P.
Hertz	60
Voltage	115
Motor RPM	1680
Max power output endolemic motor HONDA GX100	3.0 HP 3600 rpm
Fuel tank capacity	5.3 gallons
Operating dimensions	40" x 26" x 26"
Storage dimensions	29" x 26" x 28"
Weight: electric motor endolemic motor	105 pounds 113 pounds

* Capacities based on usable volume.

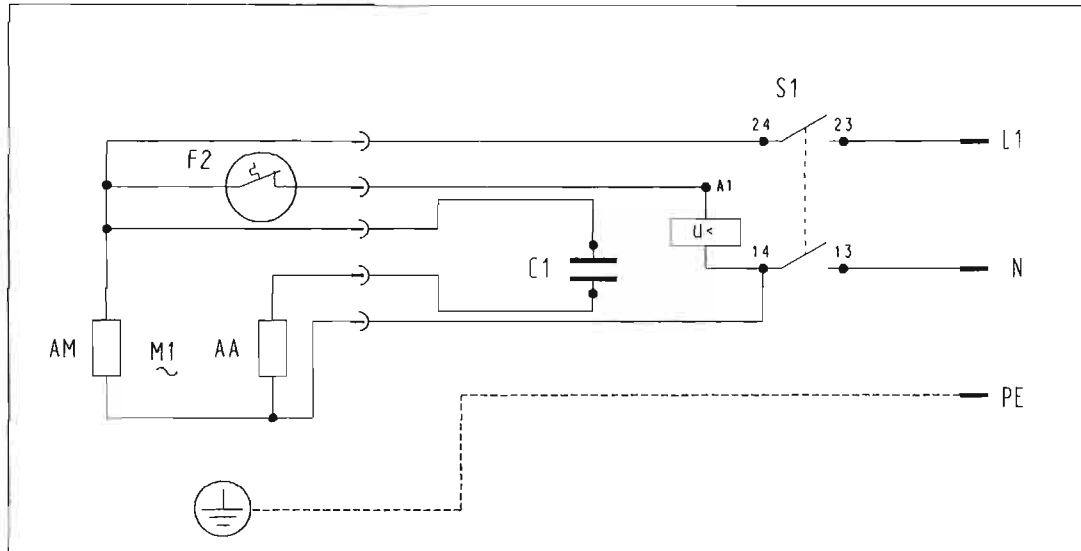
Product development and improvement is an ongoing process, therefore, specifications may change without notice.

NOISE EMISSION LEVEL

The **WHEELMAN®** with electric motor has a noise emission level of 68 decibels. It's very quiet, operate it anywhere.

The **WHEELMAN®** with endothermic motor has a noise emission level of 76 decibels.

WIRING DIAGRAM



PE	Protection wire
N	Neutral wire
L1	Phase wire
S1	Stop and start button
F2	Thermal protection for electric motor
C1	Capacitor
M1	Single phase motor
AM	Motor winding
AA	Motor winding



WARNING

Any type of electrical repair or trouble-shooting should only be performed by an IMER dealer or a properly qualified electrical repair shop. For assistance with any electrical difficulty, IMER U.S.A. is always directly available for assistance. Call 650.872.2200 between 8-5 Pacific Standard Time.

For assistance with Honda motor repair, contact the Honda assistance (read the enclosed manual).



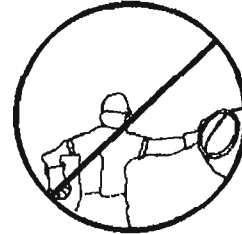
SAFETY NOTES

IMPORTANT ! READ THIS SECTION CAREFULLY !

Your **WHEELMAN®** mixer has been designed with safety in mind. However, as with any type of machinery, some basic **DO'S** and **DONT'S** apply:

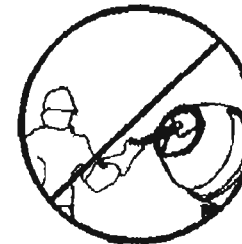
DO NOT

Place your hand or hands in or around any part of the drum while it is operating !



DO NOT

Place any tools or instruments in or around the drum while it is operating !



DO NOT

Operate the mixer on a surface that is not flat or is uneven !

*Always operate the **WHEELMAN®** on a level surface, if placed on an incline the machine will fall over.*

DO NOT

Clean, assemble or work on the unit while it is plugged in !

DO NOT

Allow water to contact the motor or electrical connections at any time !

DO NOT

Operate the unit in or around water puddles.

DO NOT

Leave the machine unattended !

DO NOT

Allow other persons around the mixer while it is operating !

DO NOT

Operate the mixer while under the influence of alcohol or drugs !



DO NOT

Do not start and stop the mixer with material in the drum, this will damage the motor and is not the best way to mix.

Always have the drum rotating when filling or discharging the mixer

SAFETY NOTES

DO

Read all the instructions before operating the mixer.

DO

Use caution when assembling and transporting the mixer.

DO

Keep the mixer clean and free of debris and mix build-up.

DO

Turn the engine off when filling with fuel.

DO

Keep all the moving parts lightly greased .

DO

Periodically inspect your mixer for abnormal wear or damage.

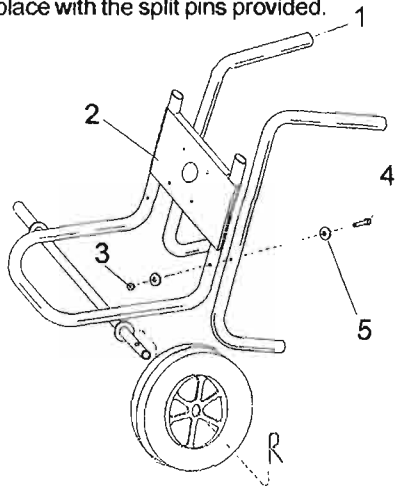
DO

Wear the appropriate safety gear; hard hat ,gloves, goggles, ear protection and wear tight clothing around the mixer.Loose clothing can cause injury should it become entangled with the mixer.

ASSEMBLY THE WHEELMAN® WITH ELECTRIC MOTOR - Follow drawings 1 thru 4 -

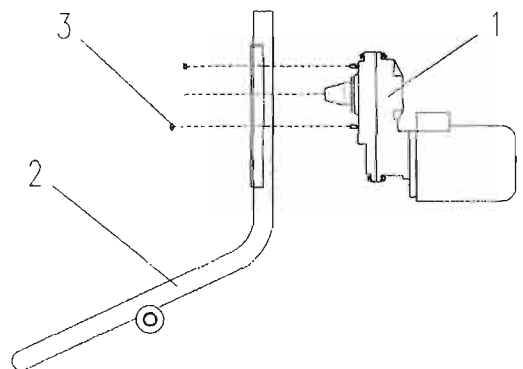
1

Attach the motor gearbox frame #2, to the dump handles #1 using the nuts, bolts, and washers provided. Slide the wheels onto the axle and keep them in place with the split pins provided.



2

Slide the motor gearbox assembly #1 onto the motor gearbox frame #2 and anchor it in place by using the 4 qty. 8mm locknuts provided.



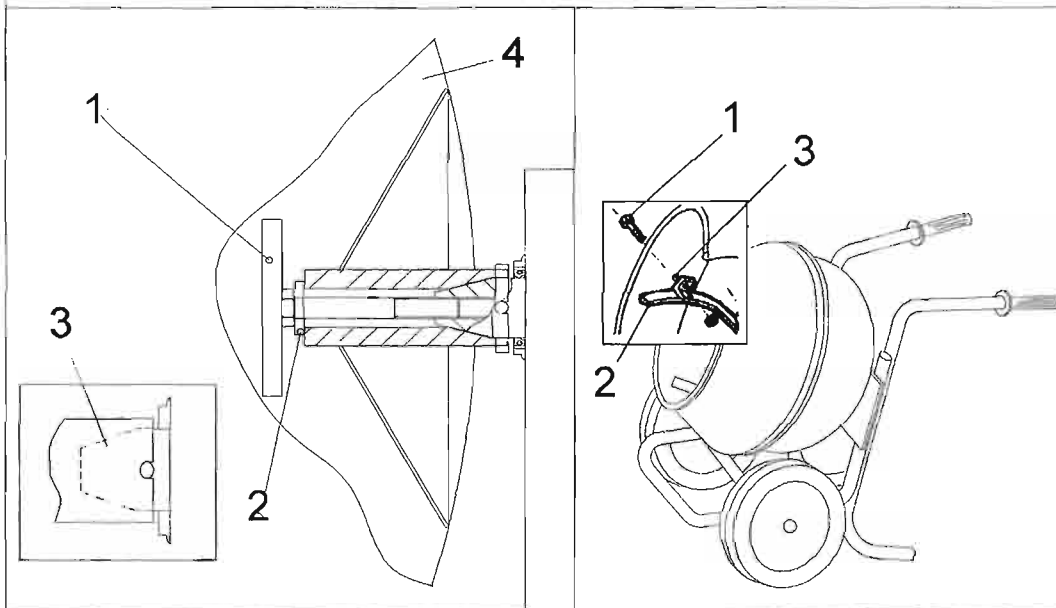
ASSEMBLY

3

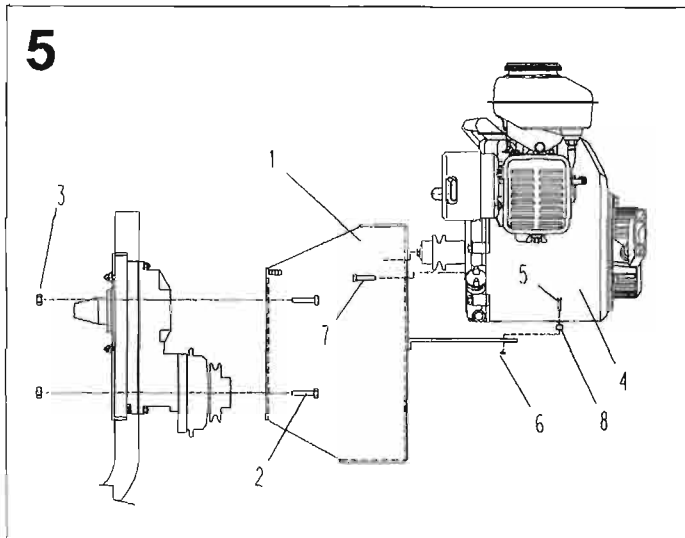
Next slide the drum onto the driveshaft #3, make sure the notched area on the drum #4 lines up with the shear pin. Then anchor the drum in place with the T-Bolt #1 and T-Bolt #2 washer. Push the drum up onto the driveshaft while at the same time tightening the T-Bolt by hand. Once the T-Bolt is tightened as much as possible by hand, give it a whack or two with a hammer-no more, no less.

4

Anchor the mixing paddles #2, with the large flat head screws #1 and nuts #3 provided. It is best to place the flat head of the screw on the outside of the drum. This keeps the external contour of the drum smoother and less likely to catch or pinch objects as the drum is rotating.



ASSEMBLY THE WHEELMAN® WITH ENDOTHERMIC MOTOR -Follow drawings 1 thru 6



Fit the engine support (ref.1) by screwing in the 4 bolts (ref. 2) with their nuts (ref. 3): do not fully tighten the bolts.

Fit the internal combustion engine (ref. 4) on to its support, with the 2 spacers (ref.8), tightening up the bolts (ref. 5), nuts (ref. 6) and bolts (ref. 7) on the front support.

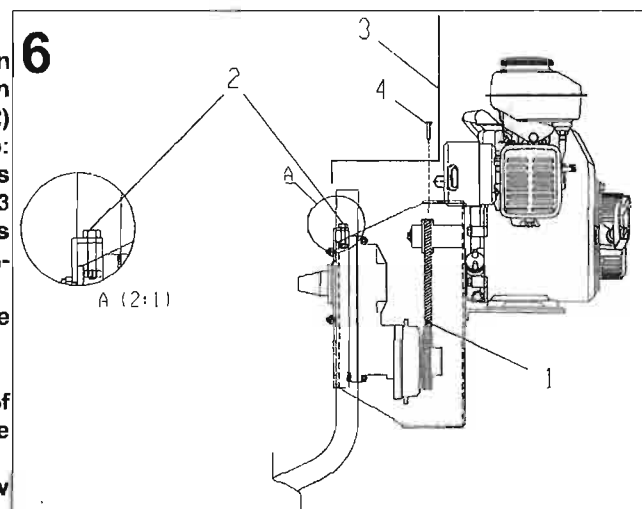
Fit the V-belt (ref. 1) on to the reduction gear pulley and internal combustion engine pulley. Screw the two bolts (ref. 2) on to the engine support (ref. 1, fig. 3-5): the tightening of these bolts also tightens the belt. Next, tighten up the 4 nuts (ref. 3 drawings 5) on the bolts (ref. 2, drawings 5) to secure the engine support on the frame.

Bolt the engine guard (ref. 3) on to the support with the 2 bolts (ref. 4).

Tightening the belt

The belt must be tightened to a force of approximately 30 pounds to operate properly.

Check the belt tension during the first few days of use.



6



MOVING THE WHEELMAN®



WARNING

Always disconnect the power source before rolling the mixer.

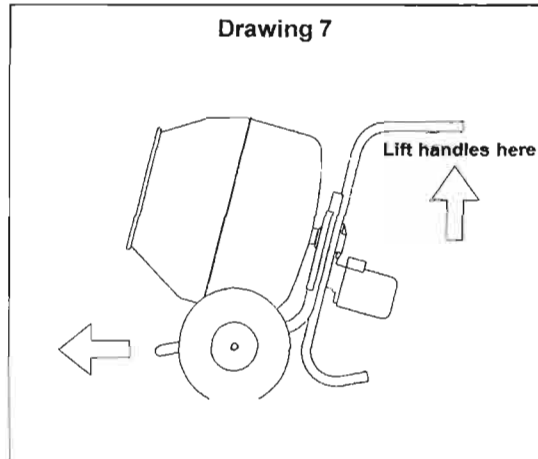
To roll the machine, grasp the two dump levers #7 and gently lift upwards.

Lift gently, for if you lift the machine up too quickly and too far, it will begin to discharge the loaded material.

When moving the mixer around, whether loaded or unloaded, clear a pathway so that the **WHEELMAN®** will be under control at all times.

Remember-the batch capacity of the **WHEELMAN®** is 275 lbs, do not attempt to roll it fully loaded across uneven surfaces or down steep slopes. This could lead to your losing control of the machine and concrete going everywhere.

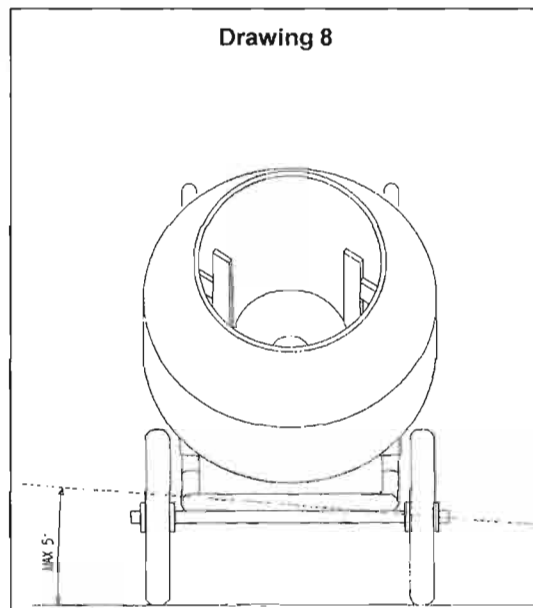
When in doubt, roll the machine empty to where you want to pour the concrete, and mix in that spot.



CAUTION- Set up important !

Clear a suitable work area around the mixer. Position the **WHEELMAN®** on level ground.

DO NOT EXCEED MORE THAN 5° of ground slope or the mixer can fall over and cause bodily harm and a big mess.





OPERATION

WHEELMAN® WITH ELECTRIC MOTOR

- 1) Use a 3 prong, grounded, 115 volt power connection for safe operation. The line should be at least 14 gauge.
- 2) To mix concrete, add water, concrete, and aggregate while the drum is rotating.
- 3) Discharge the mixed concrete by lifting up the dump handle Drawings #7 page10 while the drum is rotating.



NOTE: When tilting the drum to discharge the concrete, do so slowly. It is important to perform the discharge smoothly, this keeps the machine balanced and upright.

- 4) The ON/OFF switch on the motor of the WHEELMAN® mixer provides thermal protection to the motor in the event of overheating. Should your motor shut off automatically, turn off the unit and unplug it for 15 minutes. This allows the motor to cool. After the cooling period, plug in the motor and press the start switch. If the motor does not restart and continue to run, contact your local IMER products distributor, or call IMER direct at (650) 872-2200.

WHEELMAN® WITH ENDOTHERMIC MOTOR

Check the engine (see enclosed handbook).

Check the engine oil level (see enclosed handbook). The oil tank must be filled with oil when assembling the cement mixer, as it is supplied without oil.

Fill the fuel tank with fuel (see enclosed handbook).

Follow the starting instructions in the handbook.

Warm up the engine at low running speed.



Do not start up the engine when the drum is full.

Always switch off the engine before moving and/or unloading the machine.

Check if the rounds of the drum is 25 r.p.m.



- In case of emergency turn off the engine stop button.

To mix concrete, add water, concrete, and aggregate while the drum is rotating.



Discharge the mixed concrete by lifting up the dump handle Drawings #7 page10 while the drum is rotating.

NOTE: When tilting the drum to discharge the concrete, do so slowly. It is important to perform the discharge smoothly, this keeps the machine balanced and upright.

MAINTENANCE

The **WHEELMAN®** Mixer requires very low maintenance. However, a few basic maintenance procedures should be followed.



NOTE: Always unplug the mixer from its power source before cleaning or maintenance functions are performed.

- 1) Clean the mixer after each use and do not allow any concrete to build up on any portion of the mixer.
- 2) Essentially the gearbox is sealed for life. The quality of the gears and the lubricant are such that changing the oil is not necessary. Should you want to change the oil, see your dealer or call IMER U.S.A direct for instruction.
- 3) Keep all moving parts lightly greased.
- 4) Keep the electric motor cooling fins clean and free of debris build-up.
- 5) Before storing the **WHEELMAN®** after a project is completed, spray n' wipe the entire machine with WD-40



NOTE: When cleaning the mixer with water, do not spray the water onto the motor or the ON/OFF switch assembly.



- INTERNAL COMBUSTION ENGINE

The engine must be serviced in accordance with the instructions in the enclosed manual.

SPARE PARTS

All orders for spare parts must include the following:

- 1) **Type of machine.**(Example: **WHEELMAN® wheelbar row concrete mixer**)
- 2) **Part number and drawing references of each part, see the parts list.**
- 3) **Serial number and year of manufacture recorded on the machine's identification plate.**



DIAGRAM #1 FRAME AND DRUM ASSEMBLY

REF	P.N.	DESCRIPTION	NOTE
1	2222193	SCREW	TB M12 x 25
2	2250155	PADDLE	
3	2223700	NUT	5588 M12z
4	2250719	STEEL DRUM	
5	2222982	T-BOLT	
6	2224428	T-BOLT WASHER	14X36X 6
7	3206800	KEEPER RING	M1455 ZA Ø14
8	2235457	PLASTIC PLUG	
9	2223924	NUT	5588 M6z
10	3208129	WHEEL	
11	3208452	PLASTIC PLUG	
12	2222110	BOLT	TE M8 x 70
13	3208139	HAND GRIP	D.30
14	3208397	GUARD	
15	2222002	BOLT	TE M6 x15
16	3208181	WASHER	
17	2226700	SPLIT PIN	
18	3208177	DUMP HANDLE	
19	3208166	MOTOR GEARBOX FRAME	
20	3208182	CORD GUID E	
21	3210883	IDENTIFICATION PLATE	WHEELMAN EL
	3210660		WHEELMAN ENG
	3224217		WHEELMAN EL HDPE
	3224216		WHEELMAN ENG HDPE
22	2223923	NUT	5588 M8z

REF	P.N.	DESCRIPTION	NOTE
23	3208946	MOTOR MOUNTING	
24	3208945	BELT	
25	3209501	BOLT	
26	3209498	SPACER	
27	3208872	PULLEY	
28	2222490	BOLT	
29	2222071	BOLT	
30	2223923	NUT	
31	3208947	MOTOR GUARD	
32	3208721	REDUCTION GEAR	
33	3208802	PULLEY	
34	3210658	MOTOR AND REDUCTION GEAR	
35	3210657	ENDOTHERMIC MOTOR	GX 100
36	3207394	SPACER	
37	3209509	DEFLECTOR	
38	3224130	PLASTIC DRUM	HDPE
39	3224129	INTERNAL DISC	
40	3224126	FLANGE	
41	2224204	WASHER	M8x24 Z
42	2222076	SCREW	TE M8x25 Z
43	2224206	WASHER (8 pcs)	M12x36 Z
44	3224177	SCREW (8 pcs)	TB M12X35 Z
45	2223700	NUT (8 pcs)	M12
46*	1188810	KIT PLASTIC DRUM	--- OPTIONAL ---

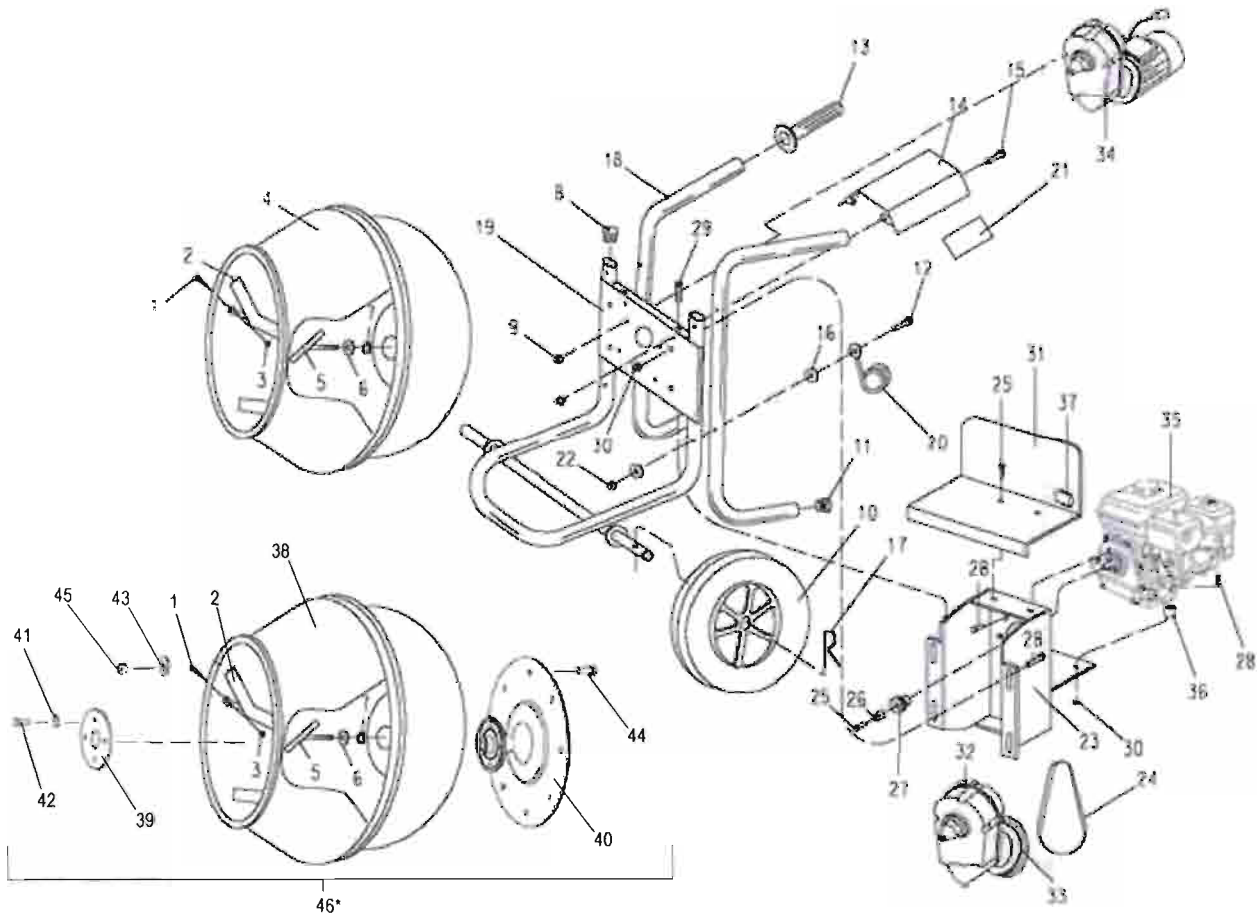
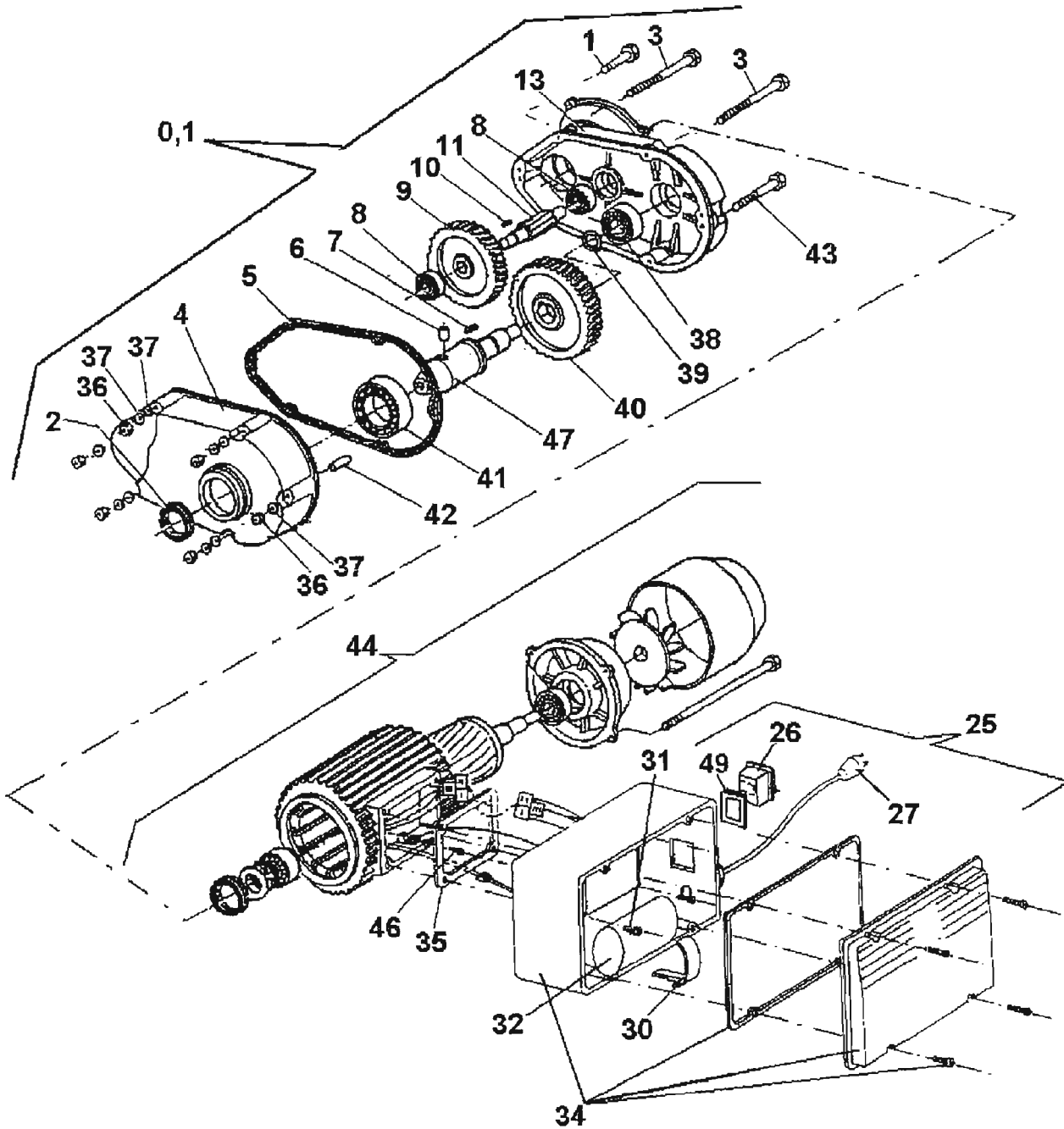




DIAGRAM #2 MOTOR AND GEARBOX ASSEMBLY (115V - 60Hz)

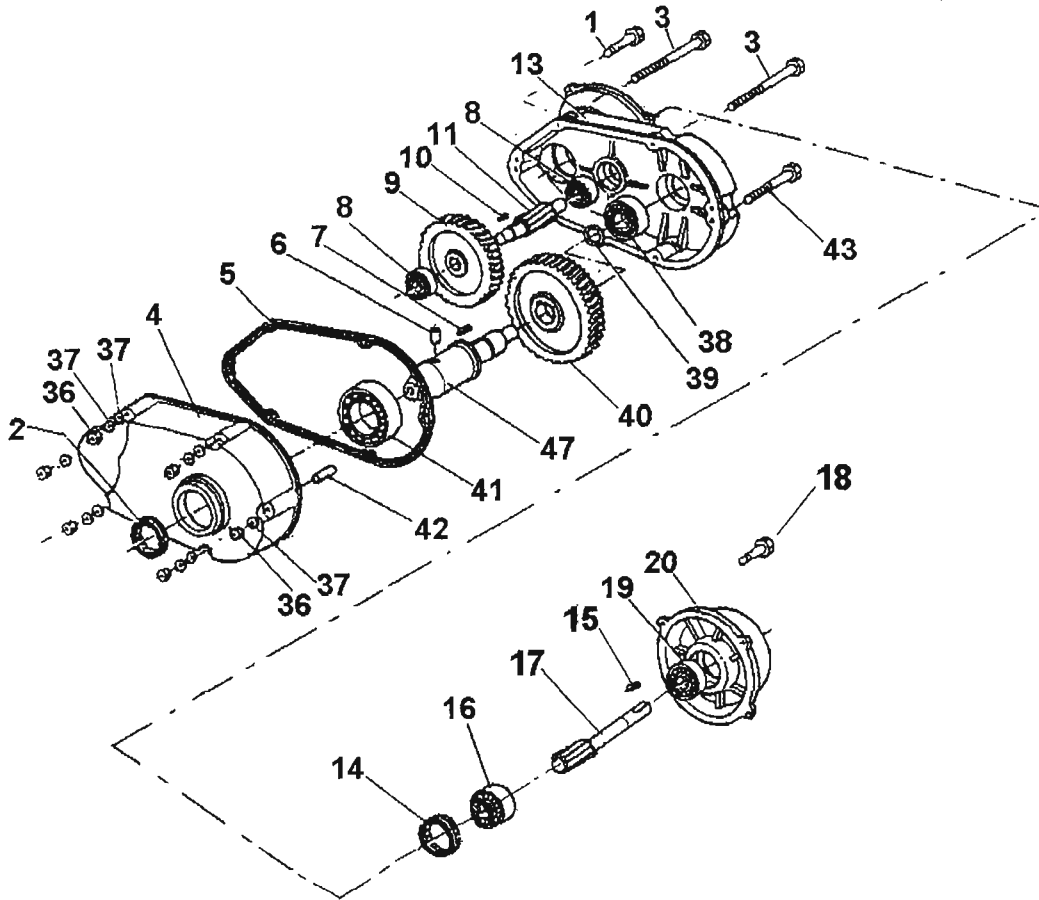




AB013 - 1126605		DRAWING 2 MOTOR AND GEARBOX ASSEMBLY (115V - 60Hz)	
Ref.	P.n.	Description	NOTE
0,1	3203932	MOTOR AND GEARBOX ASSEMBLY COMPLETE	115V-60HZ
1	2222010	BOLT	5739 M6X25
2	2207405	SEAL	55X40X10
3	2222014	BOLT	5737 M6X50
4	2236552	GEAR-BOX CASE HALF	
5	2216332	ASKET	
6	2228360	SHEAR PIN	8 X 16
7	2229500	KEY	8X7X15
8	2204420	BALL BEARING	6201
9	3213904	GEAR	Z.79
10	2229249	KEY	5X5X12
11	2202823	GEAR	Z9
13	2215006	GEARBOX CASE HALF	
25	3209534	SWITCH BOX COMPLETE	110V-60HZ
26	3209539	ON/OFF SWITCH	
27	3209542	POWER CORD WITH PLUG	0.35 M
30	3209541	PLASTIC CLAMP	
31	2222460	SCREW	TRILOB. TCC 4X12
32	3213709	CONDENSER	µF 40 V250
34	3209217	ELECTRIC BOX ASSEMBLY + SCREW + GASKET	
35	3209214	GASKET	
36	2223260	NUT	5587 M6
37	2224530	WASHER	6592Ø6X12.5
38	2204550	BEARING	6205
39	2227240	SPACER WASHER	7435 E/30
40	2202492	GEAR	Z68
41	2204504	BEARING	6008
42	2228818	LOCATING PIN	Ø6X10
43	2222013	BOLT	5737 M6X40
44	3209533	MOTOR	115V-60HZ
45	3203265	WASHER	6798A Ø4
46	2222458	SCREW	TC PH M4X6
47	2201157	GEAR BOX DRIVE SHAFT	
48	3203067	STOP RING	C.72 Ø42X30X0,3
49	*	GASKET	

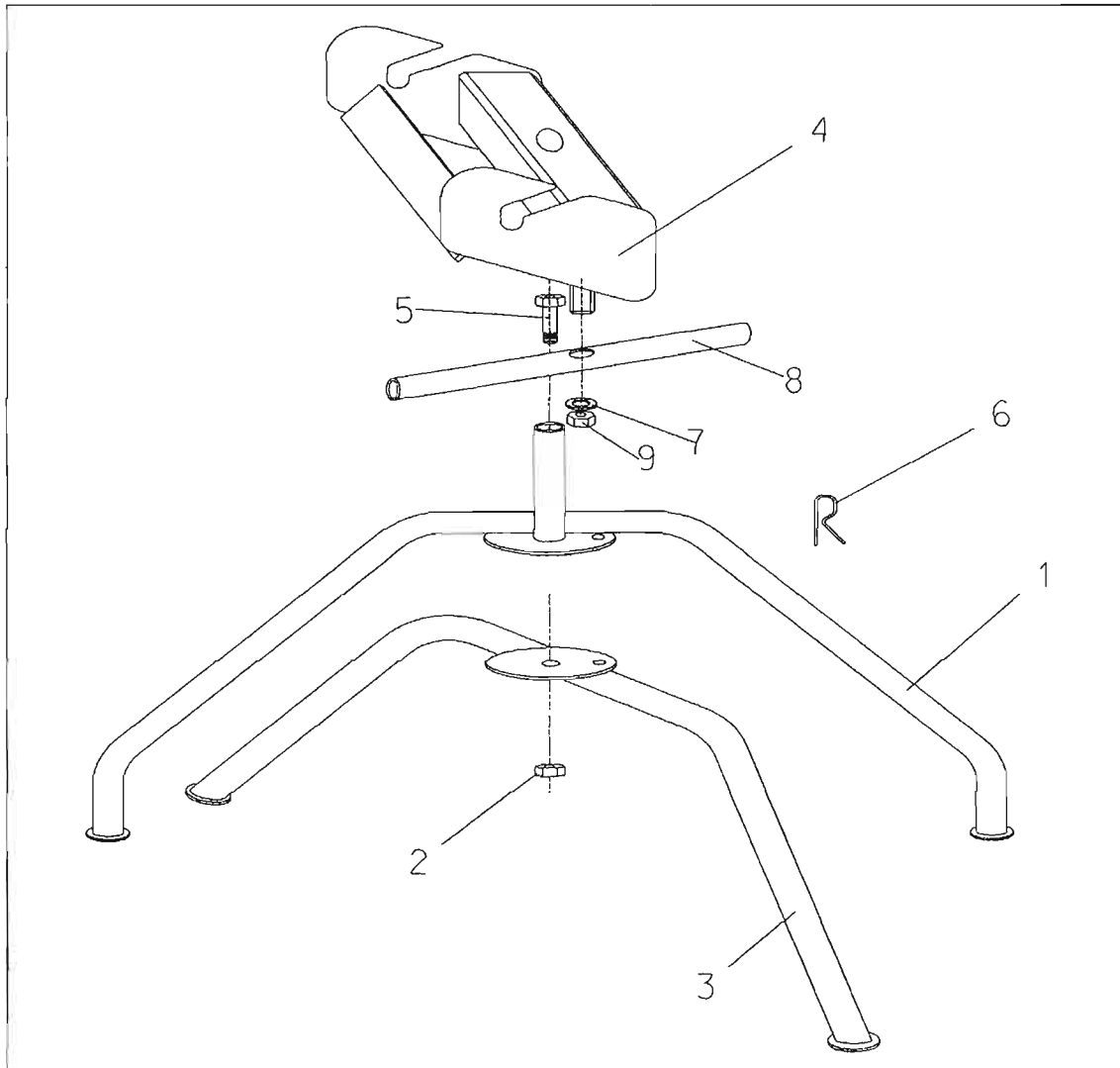


AB13-1105425		GEARBOX ASSEMBLY FOR ENDOTHERMIC MOTOR VERSION	
Ref.	P.n.	Description	NOTE
1	2222010	BOLT	5739 M6X25
2	2207405	OIL SEAL	55X40X10
3	2222014	BOLT	5737 M6 X 50
4	2236552	GEAR BOX FLANGE	
5	2216332	FLANGE GASKET	
6	2228360	SHEAR PIN	8 X 16
7	2229500	KEY	8X7X15
8	2204420	BEARING	6201
9	3213904	GEAR WHEEL	Z.79
10	2229249	KEY	5X5X12
11	2202823	PINION	Z9 M 1,75
13	2215006	GEAR BOX CASING	
14	2207300	OIL SEAL RING	42X20X7
15	2229310	KEY	6X6X30
16	2204442	BEARING	6004 2Z
17	3213900	PINION	Z9 M 1,25
18	2222000	SCREW	M5X15
19	2204242	BEARING	6202-2Z
20	3213902	CASING	
36	2223260	NUT	5587 M6
37	2224530	WASHER	6592Ü6X12.5
38	2204550	BEARING	6205
39	2227240	STOP RING	7435 E/30
40	2202492	GEAR	Z68
41	2204504	BEARING	6008
42	2228818	PIN	Ü6X10
43	2222013	SCREW	5737 M6X40
47	2201157	MAIN SHAFT	





TAV. 1		STATIONARY WORK PLATFORM	WHEELMAN
			AB013
			1105490
Ref.	Pn.	Description	Note
1	3208203	EXTERNAL LEG SUPPORT	
2	2223929	SELF LOCKING NUT	M.14
3	3208198	INTERNAL LEG SUPPORT	
4	3208191	SWIVEL BRACKET	
5	2224430	WASCHER	14X36 z
6	2226700	SPLIT PIN	
7	2224380	WASCHER	12x25 z
8	3210856	LOCKING LEVER	
9	2223929	SELF LOCKING NUT	M.12



**ACCESSORY WORK PLATFORM
FOR THE WHEELMAN® MIXER
(1105490)**



EQUIPMENT WARRANTY

IMER U.S.A. INC.

3654 Enterprise Avenue
Hayward , 94545 California
Toll Free (800)275-5463
Office: (510)670-7970
Fax (510) 783-4255

We warrant to the original purchaser that the IMER equipment described herein (the "equipment") shall be free from defects in material and workmanship under normal use and service for which it was intended for period of one (1) year from the date of purchase by the original purchaser.

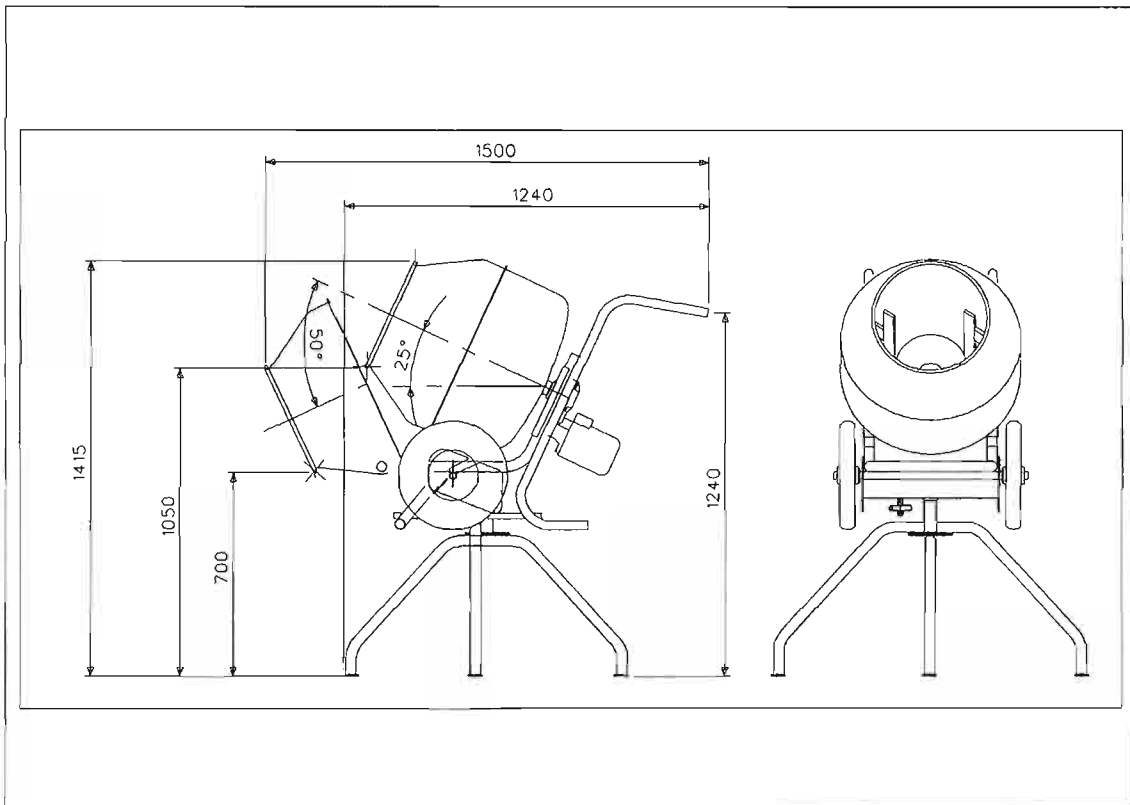
Our obligation under this warranty is expressly limited to replacing or repairing, free of charge, F. O.B. our designated service facility, such part of the equipment as our inspection shall disclose to be defective. Parts such as engines, motors, pumps, valves, electric motors, etc. furnished by us, but not manufactured by us, will carry only the warranty of the manufacturer. Transportation charges or duties shall be borne by purchaser. This shall be the limit of our liability with respect to the quality of the equipment.

This warranty shall not apply to any equipment, or parts thereof, which has been damaged by reason of accident, negligence, unreasonable use, faulty repairs, or which has not been maintained and operated in accordance with our printed instructions for the equipment. Further, this warranty is void if the equipment, or any of its components, is altered or modified in any way.

THIS WARRANTY IS EXPRESSLY IN LIEU OF ALL OTHER WARRANTIES, EXPRESSED OR IMPLIED, INCLUDING ANY IMPLIED WARRANTY OF MERCHANTABILITY OR FITNESS FOR A PARTICULAR PURPOSE.

We make no other warranty, representation or guarantee, nor is anyone authorized to make one on our behalf. We shall not be liable for consequential damage of any kind, including loss or damage resulting, directly or indirectly, from the use or loss of use of the machine. Without limiting the generality of the foregoing, this exclusion from liability embraces the purchaser's expenses for downtime, damages for which the purchaser may be liable to other person, damages to property, and injury or death of any persons.

This warranty shall not be deemed to cover maintenance parts, including but not limited to blades, belts, hoses, hydraulic oil, or filters, for which we shall have no responsibility or liability whatsoever.



**ACCESSORY WORK PLATFORM
FOR THE WHEELMAN® MIXER (1105490)**



IMER®
INTERNATIONAL Sp.A.