



RENOVATION

by MAXXON®

Tool Guide and Installation Instructions

MAXXON FORTIFY PRIMER

INSTALLATION INSTRUCTIONS

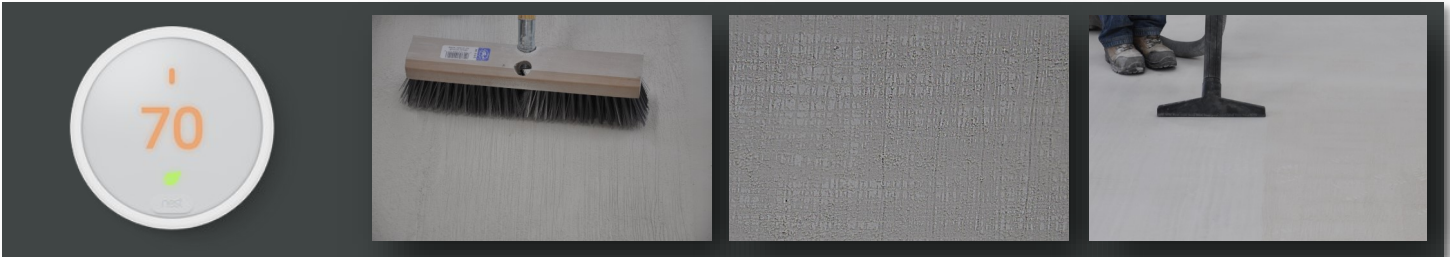
Maxxon Fortify as a Consolidating Primer

Tools Needed:

1. Wire Bristled Deck Brush
2. Vacuum such as Shop Vac
3. Handheld airless type tank sprayer
4. Nap roller

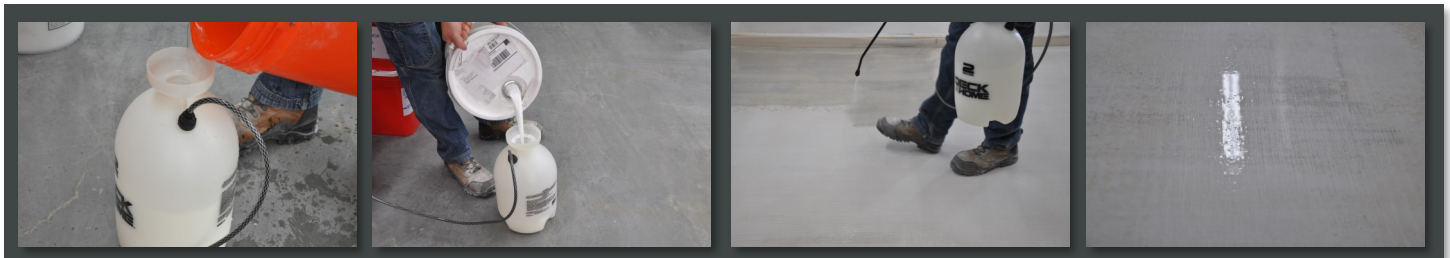


Floor Prep:



1. Maxxon Fortify Primer can be applied in temperatures between 50-100°F (10-38°C), provided the temperature is at least 5°F above the dew point.
2. Using a wire bristled deck brush, forcefully brush the floor in a cross-hatch pattern, removing loose or dusty underlayment and open up the surface, increasing absorptiveness.
3. Vacuum up dust.

First Coat:



1. Mix 1:1 (1 part clean, potable water to 1 part Fortify Primer Concentrate).
2. Apply Maxxon Fortify Primer in a light, even cross-hatch pattern at a rate of approximately 60 ft²/gallon, or until rejection*. Rejection can be observed when a thin layer of primer begins remaining on the surface for at least several minutes. After first coat is dry to the touch (approximately 2-4 hours), second coat may be applied.

Second Coat:



1. Do not dilute second coat.
2. Apply second coat in a light, even coat at a rate of approximately 160 ft²/gallon*. If puddling occurs, back roll with a 3/8" nap roller.
3. After second coat is dry to the touch, Maxxon EZ Underlayment may be installed.

*Coverage rate may vary based on the absorptivity and porosity of the gypsum subfloor.
1st coat range: between 40-100 ft²/gallon
2nd coat range: between 100-200 ft²/gallon

800-238-8461 · www.Maxxon.com/123EZ

 **RENOVATION**
by MAXXON®

LEVEL EZ

INSTALLATION INSTRUCTIONS Barrel Mix

Tools Needed:

1. Mixing Drum (15 gallon)
2. 1 gallon measuring tool
3. High-speed mixing drill with Jiffy paddles (egg beater style is a suitable substitute)
4. Gauge Rake
5. Smoother/spreader
6. Nonmetallic cleated shoes



Floor Prep:



1. Subfloors must be structurally sound, broom cleaned, dry* and contaminant free. Interior temperatures must be a minimum of 50 °F.
2. Prepare subfloor per instructions on Maxxon Fortify TDS.
3. Prime all substrates with Maxxon Fortify Primer per instructions found on Maxxon Fortify TDS.

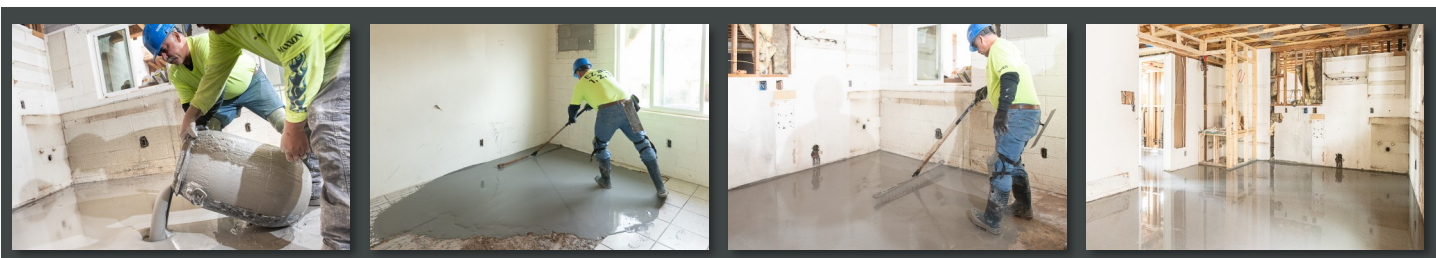
*If it is determined the subfloor is **not** fully dry, contact Maxxon Corporation for required next steps.

Mixing:



1. In a 15 gallon mixing barrel, mix 4.5 qts of water per 50 lb bag of Level EZ. In this size container, a typical mix consists of two bags of Level EZ with the correct amount of water per bag.
2. Combine Level EZ powder and water using a high-speed mixer with a "Jiffy" mixing paddle. Mix to a homogenous, lump-free consistency for approximately 2.5 minutes. Do not over mix. Over mixing can cause air entrapment, which can shorten workability time and/or cause pinholing during application and curing.

Installation over Existing Concrete or Gypsum:



3. Pour from mixing bucket directly onto primed floor.
4. Immediately after placing Level EZ, spread the material using a suitable gauge rake to assist in achieving the desired depth. Apply enough material to adequately cover all high points with a minimum of 1/4" of material. Follow with a suitable smoother to deaerate the Level EZ.
5. Level EZ can be walked on in as little as 4 hours. Refer to TDS for Floor Covering installation.

800-238-8461 · www.Maxxon.com/123EZ

 **RENOVATION**
by MAXXON®

GYP-CRETE® EZ

INSTALLATION INSTRUCTIONS

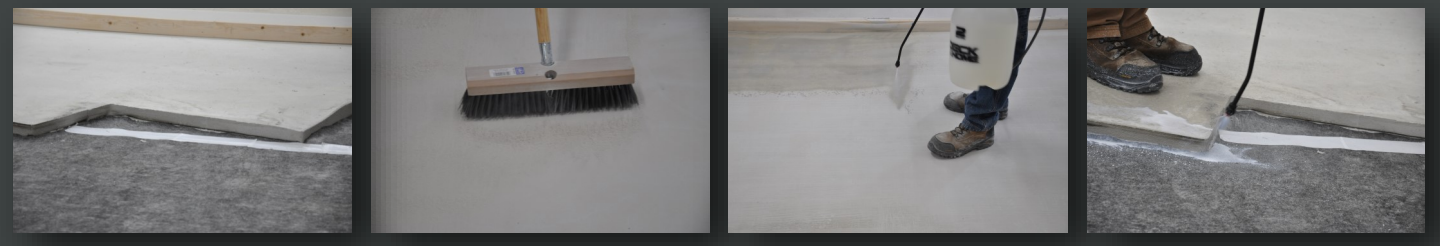
Barrel mix for gypsum replacement

Tools Needed:

1. Mixing Drum (15 gallon) or Hippo Mixer
2. 1 gallon measuring tool
3. High-speed mixing drill with Jiffy paddles (egg beater style is a suitable substitute)
4. Gauge Rake
5. Smoother/spreader
6. Nonmetallic cleated shoes



Floor Prep:



1. Remove section of debonded gypsum underlayment down to the wood subfloor*.
2. All subfloors must be structurally sound, broom cleaned contaminant free, dry** and a minimum of 50°F.
3. Prime all substrates, including exposed edge and surface of existing underlayment, with Maxxon Fortify Primer or Maxxon Multi-Use Acrylic per instructions found on corresponding TDS.

*A sound mat, such as Maxxon's Acousti-Mat or Acousti-Top®, can be installed directly on the subfloor and encased in the Gyp-Crete EZ to ensure a similar acoustical performance throughout the floor.

If it is determined the subfloor is **not fully dry, contact Maxxon Corporation for required next steps.

Mixing:



1. In a 15 gallon mixing barrel, mix 3.8–4.1 qts of water per 50 lb bag of Gyp-Crete EZ*. In this size container, a typical mix is two bags of Gyp-Crete EZ with the correct amount of water per bag.
2. Combine Gyp-Crete EZ powder and water using a high-speed mixer with a "Jiffy" mixing paddle. Mix to a homogenous, lump-free consistency for approximately 2.5 minutes. Do not over mix. Over mixing can cause air entrapment, which can shorten workability time and/or cause pinholing during application and curing.

*Water should be added to mixing container first, then mix in powder.

Installation over Existing Concrete or Gypsum:



3. Pour from mixing bucket directly onto primed floor.
4. Immediately after placing Gyp-Crete EZ, spread the material using a suitable gauge rake to assist in achieving the desired depth. Apply enough material to adequately fill to existing underlayment height with a minimum of 3/4" of material. Follow with a suitable smoother to deaerate the Gyp-Crete EZ.
5. Gyp-Crete EZ can be walked on in as little as 4 hours. Refer to TDS for Floor Covering installation.

800-238-8461 · www.Maxxon.com/123EZ

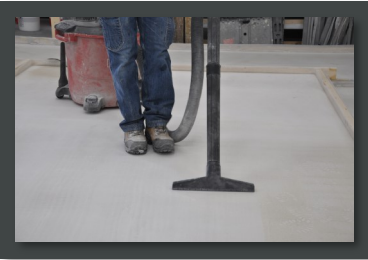
 **RENOVATION**
by MAXXON®

Tools Needed:

1. Cutting Utensil
2. Tape and dispenser (loose lay)
3. 3/8" Nap roller (glue down)
4. Weighted floor roller



Floor Prep:

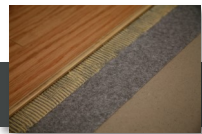


1. The concrete substrate should be broom cleaned, contaminant free and should have a smooth finish, free from voids and sharp protrusions.

Installation—Glue Down Method:



1. Measure and cut strips of Acousti-Top, set aside.
2. Roll Acousti-Top Adhesive over clean and contaminant free subfloor.
3. Acousti-Top is placed into wet adhesive with seams butt jointed*. During application, take care to avoid wrinkles and bubbles in mat.
4. After Acousti-Top strips are placed, back roll to ensure that 100% surface contact is achieved. Roll perpendicular to direction of floor goods.



Engineered/Laminate wood floors, LVT/LVP, tile or mortar bed are applied directly to Acousti-Top. Take care to avoid placing flooring seams directly in line with Acousti-Top seams.

Installation—Loose Lay Method:



1. Loose lay Acousti-Top onto clean and contaminant free subfloor with seams butt jointed*.
2. Tape seams of Acousti-Top with minimum 2" width tape.
3. Engineered/Laminate wood floors, LVT/LVP are applied directly to Acousti-Top. Take care to avoid placing flooring seams directly in line with Acousti-Top seams.

*The installation of Acousti-Top does not eliminate the need for expansion or movement joints, including perimeter joints. An expansion of 1/4" must be maintained at all times. Use Maxxon Perimeter Isolation Strips to assist in maintaining the expansion gap.

800-238-8461 · www.Maxxon.com/123EZ

 **RENOVATION**
by MAXXON®