

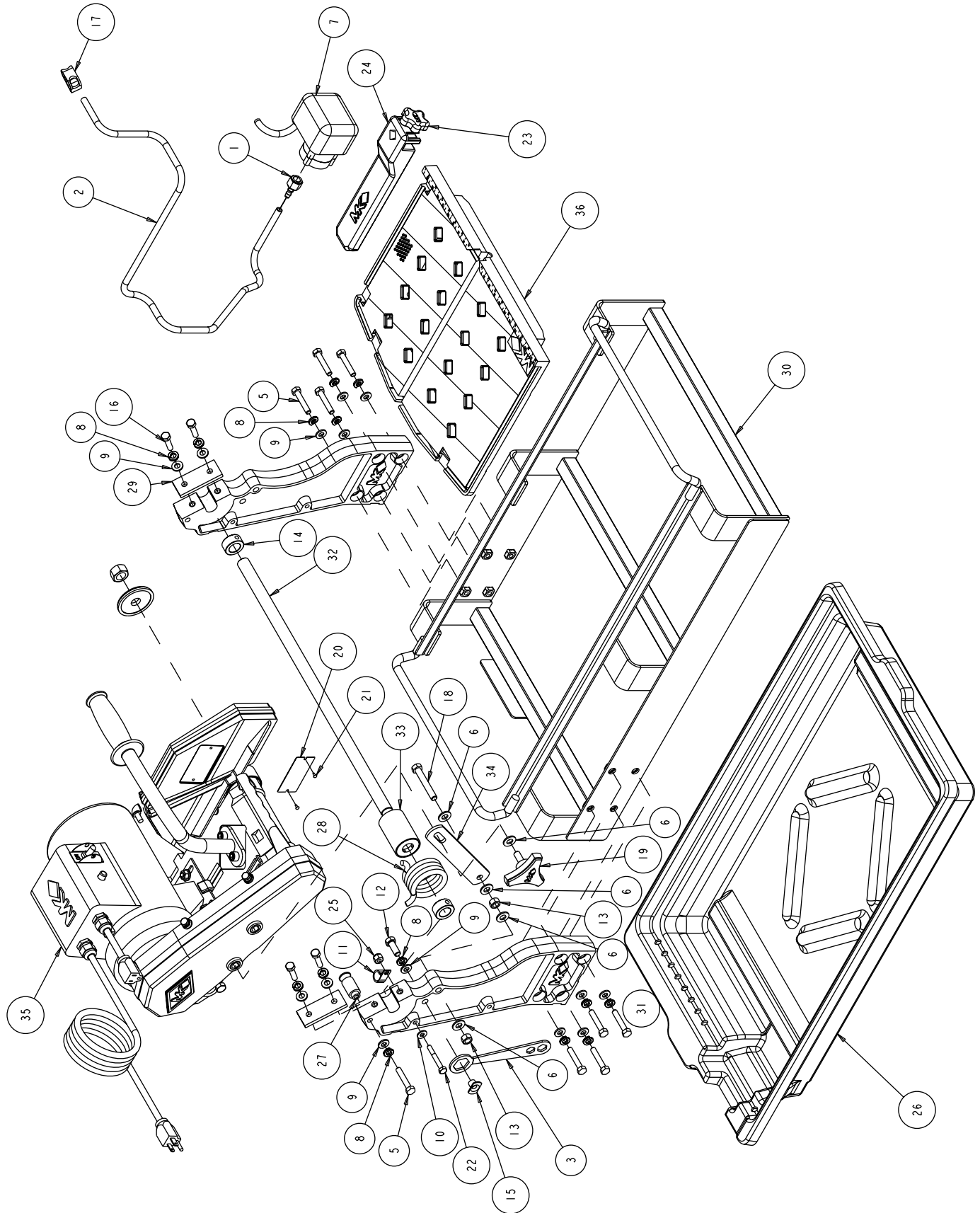
MK-1080 PAVER SAW OPERATION & PARTS MANUAL



Revision 102	03.2012
Manual Part No. 166894	

Caution: Read all safety and operating instructions before using this equipment. This manual **MUST** accompany the equipment at all times.

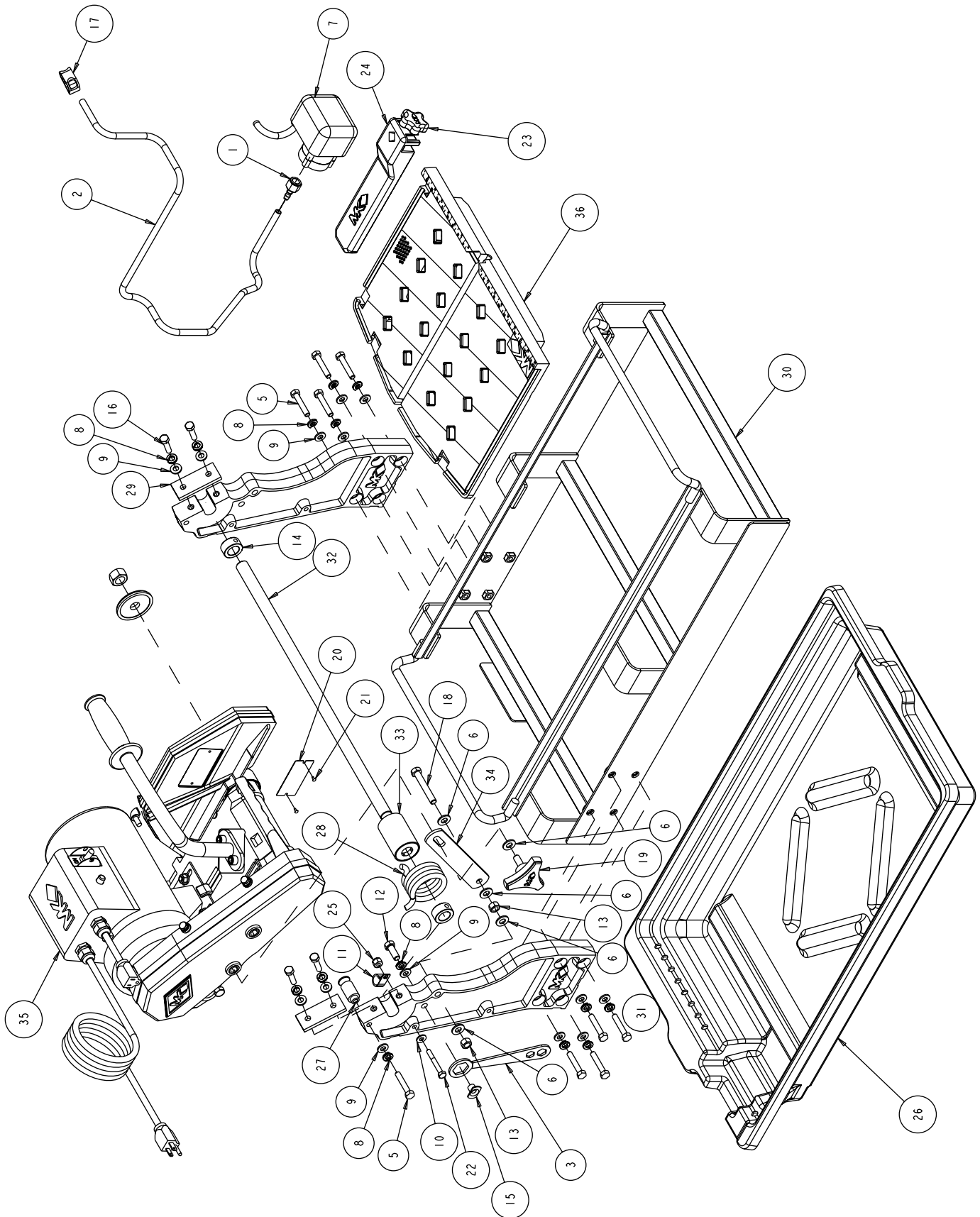
PAVER SAW, MK-1080, 1.5 HP 120V 60HZ, 153203



PAVER SAW, MK-1080, 1.5 HP 120V 60HZ, 153203

ITEM NO.	DESCRIPTION	PART OR IDENTIFYING NO.	QTY. REQ.
1	FITTING, PLASTIC, 1/4 FNPT X 1/4 BARB	128397	1
2	HOSE, VINYL, 3/8 X 1/4	132951	1
3	WRENCH	134684	1
5	SCREW, 5/16-18 X 1-3/4 HEX HEAD CAP	150919	9
6	WASHER, 3/8 SAE FLAT	150923	5
7	PUMP, WATER, G-150A	151271	1
8	WASHER, LOCK, SPLIT, 5/16	151747	14
9	WASHER, SAE FLAT, 5/16	151754	14
10	WASHER, 1/4 SAE FLAT	151915	1
11	CLAMP, 1/2 CUSHION LOCK	152471	1
12	SCREW, HEX HEAD CAP, 3/8-16 X 1	152507	1
13	NUT, 3/8-16 HEX CENTERLOCK	153522	2
14	COLLAR, 3/4" I.D.	153814	2
15	NUT, WELD, SLAB, 3/8-16	153945	1
16	SCREW, 5/16-18 X 1-1/4 HEX HEAD MACHINE	153950	4
17	CLAMP, HOSE, 1/2-3/4	154394	1
18	BOLT, 3/8-16 X 2-1/2 HEX HEAD TAP	155589	1
19	KNOB, TRI	156770-01	1
20	TAG, SERIAL #, BLANK	157500-RW	1
21	DRIVE SCREW, #7 X 5/16 ROUND HEAD	157849	2
22	SCREW, HEX HEAD 1/4-20 X 1-1/4	158282	1
23	KNOB, 1/4-20 X 3/4	159428-1	1
24	RIP GUIDE, LARGE DIE CAST (COMP)	159751	1
25	NUT, 1/4-20 NYLOK	159857	1
26	PAN, WATER	160041	1
27	STUD, SPRING RETAINING	160066	1
28	SPRING, TORSION, 50 DEG	160069	1
29	BRACKET, PIVOT SHAFT	160070	2
30	WELDMENT, FRAME	166865	1
31	CASTING POST (COMP)	166871	2
32	SHAFT, PIVOT	166873	1
33	ASSY, SPRING BUSHING	166874	1
34	BRACKET, HEIGHT ADJUSTMENT	166875	2
35	ASSY, CUTTING HEAD	166877	1
36	ASSY, TABLE	166880	1

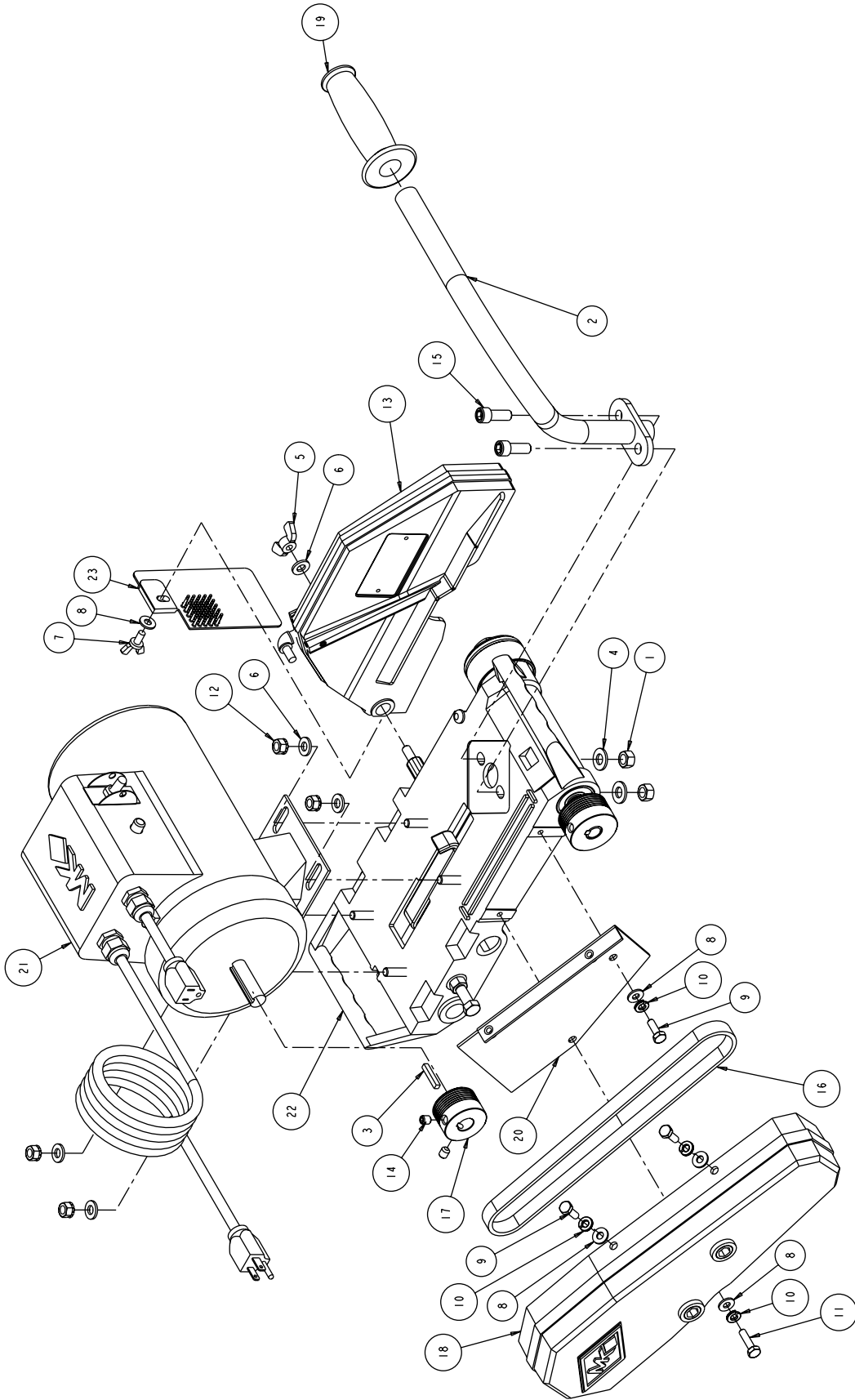
PAVER SAW, MK-1080 HOME DEPOT, 1.5 HP 120V 60HZ, 153203-HD



PAVER SAW, MK-1080 HOME DEPOT, 1.5 HP 120V 60HZ, 153203-HD

ITEM NO.	DESCRIPTION	PART OR IDENTIFYING NO.	QTY. REQ.
1	FITTING, PLASTIC, 1/4 FNPT X 1/4 BARB	128397	1
2	HOSE, VINYL, 3/8 X 1/4	132951	1
3	WRENCH	134684	1
5	SCREW, 5/16-18 X 1-3/4 HEX HEAD CAP	150919	9
6	WASHER, 3/8 SAE FLAT	150923	5
7	PUMP, WATER, G-150A	151271	1
8	WASHER, LOCK, SPLIT, 5/16	151747	14
9	WASHER, SAE FLAT, 5/16	151754	14
10	WASHER, 1/4 SAE FLAT	151915	1
11	CLAMP, 1/2 CUSHION LOCK	152471	1
12	SCREW, HEX HEAD CAP, 3/8-16 X 1	152507	1
13	NUT, 3/8-16 HEX CENTERLOCK	153522	2
14	COLLAR, 3/4" I.D.	153814	2
15	NUT, WELD, SLAB, 3/8-16	153945	1
16	SCREW, 5/16-18 X 1-1/4 HEX HEAD MACHINE	153950	4
17	CLAMP, HOSE, 1/2-3/4	154394	1
18	BOLT, 3/8-16 X 2-1/2 HEX HEAD TAP	155589	1
19	KNOB, TRI	156770-01	1
20	TAG, SERIAL #, BLANK	157500-RW	1
21	DRIVE SCREW, #7 X 5/16 ROUND HEAD	157849	2
22	SCREW, HEX HEAD 1/4-20 X 1-1/4	158282	1
23	KNOB, 1/4-20 X 3/4	159428-1	1
24	RIP GUIDE, LARGE DIE CAST (COMP)	159751	1
25	NUT, 1/4-20 NYLOK	159857	1
26	PAN, WATER	160041	1
27	STUD, SPRING RETAINING	160066	1
28	SPRING, TORSION, 50 DEG	160069	1
29	BRACKET, PIVOT SHAFT	160070	2
30	WELDMENT, FRAME	166865	1
31	CASTING POST (COMP)	166871-HD	2
32	SHAFT, PIVOT	166873	1
33	ASSY, SPRING BUSHING	166874	1
34	BRACKET, HEIGHT ADJUSTMENT	166875	2
35	ASSY, CUTTING HEAD	166877-HD	1
36	ASSY, TABLE	166880	1

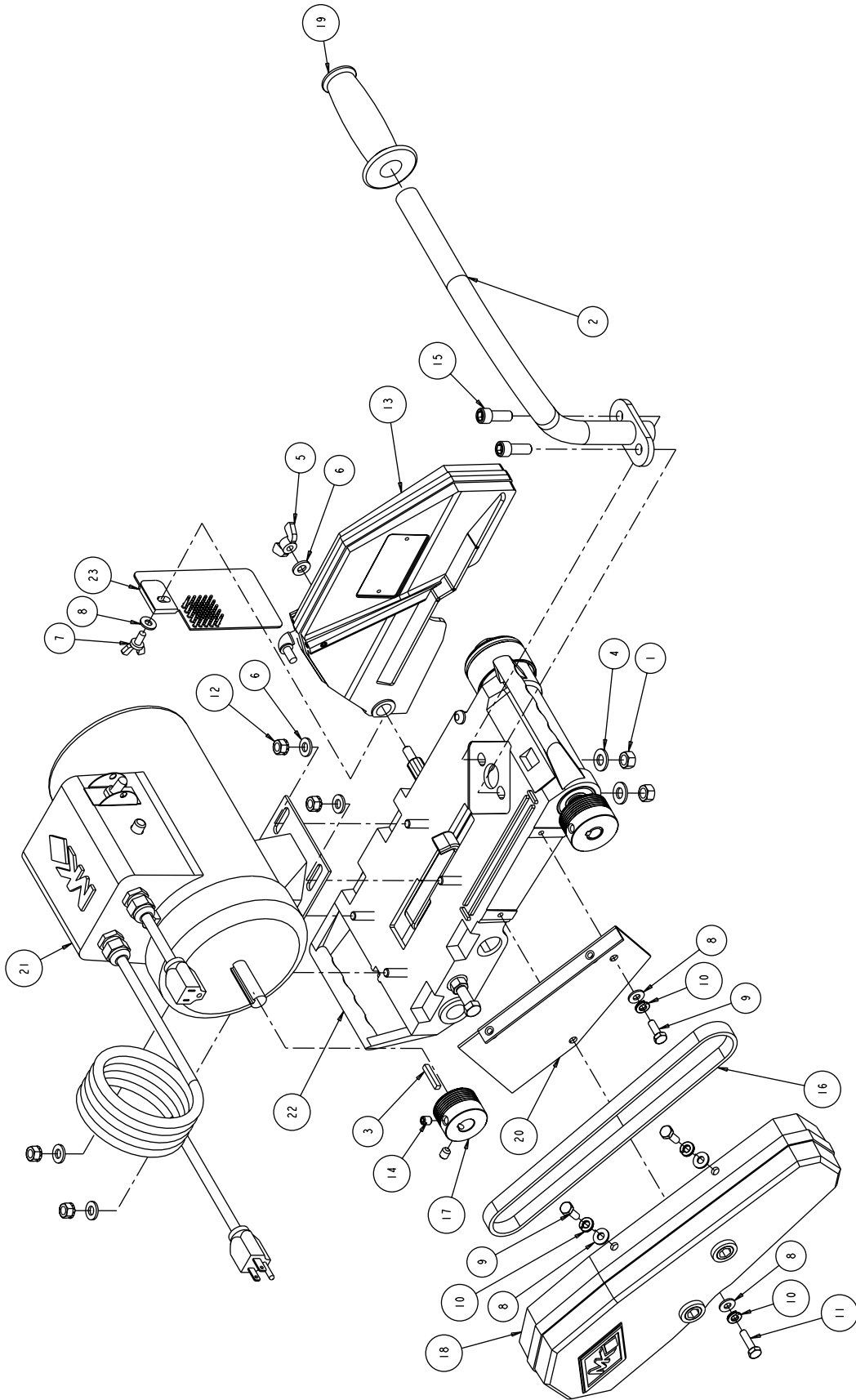
PAVER SAW, MK-1080 ASSY, CUTTING HEAD, 166877



PAVER SAW, MK-1080 ASSY, CUTTING HEAD, 166877

ITEM NO.	DESCRIPTION	PART OR IDENTIFYING NO.	QTY. REQ.
1	NUT, 3/8-16 HEX	101188	2
2	HANDLE, BRICKSAW	139931	1
3	KEY, 3/16 SQ X 1-1/8	150344	1
4	WASHER, 3/8 SAE FLAT	150923	2
5	WINGNUT, 5/16-18 NYLOK	151746	1
6	WASHER, 5/16 SAE FLAT	151754	5
7	SCREW, WING, 1/4-20 X 1/2	151888	1
8	WASHER, 1/4 SAE FLAT	151915	5
9	SCREW, 1/4-20 X 3/4 HEX HEAD MACHINE	152370	3
10	WASHER, 1/4 SPLIT LOCK	152591	4
11	SCREW, HEX HD CAP, 1/4-20 X 1	152676	1
12	NUT, HEX, TW, 5/16-18	153942	4
13	ASSY, BLADE GUARD	154297	1
14	SCREW, 5/16-18 X 3/8 SOCKET HEAD SET	157083	2
15	SCREW, SOCKET HEAD CAP, 3/8-16 X 1	157529	2
16	BELT, MCIRO-V, 260J6	158194	1
17	PULLEY, 6J17 X 5/8 BORE	158214	1
18	GUARD, BELT (COMP)	158319-15	1
19	GRIP, HANDLE, 7/8 ID	158608	1
20	BRACKET, INNER BELTGUARD	158611	1
21	MOTOR, 115V, 1-1/2 HP	160127	1
22	ASSY, MOTOR MOUNT	166878	1
23	GUARD, SPLASH, MODIFIED	167172	1

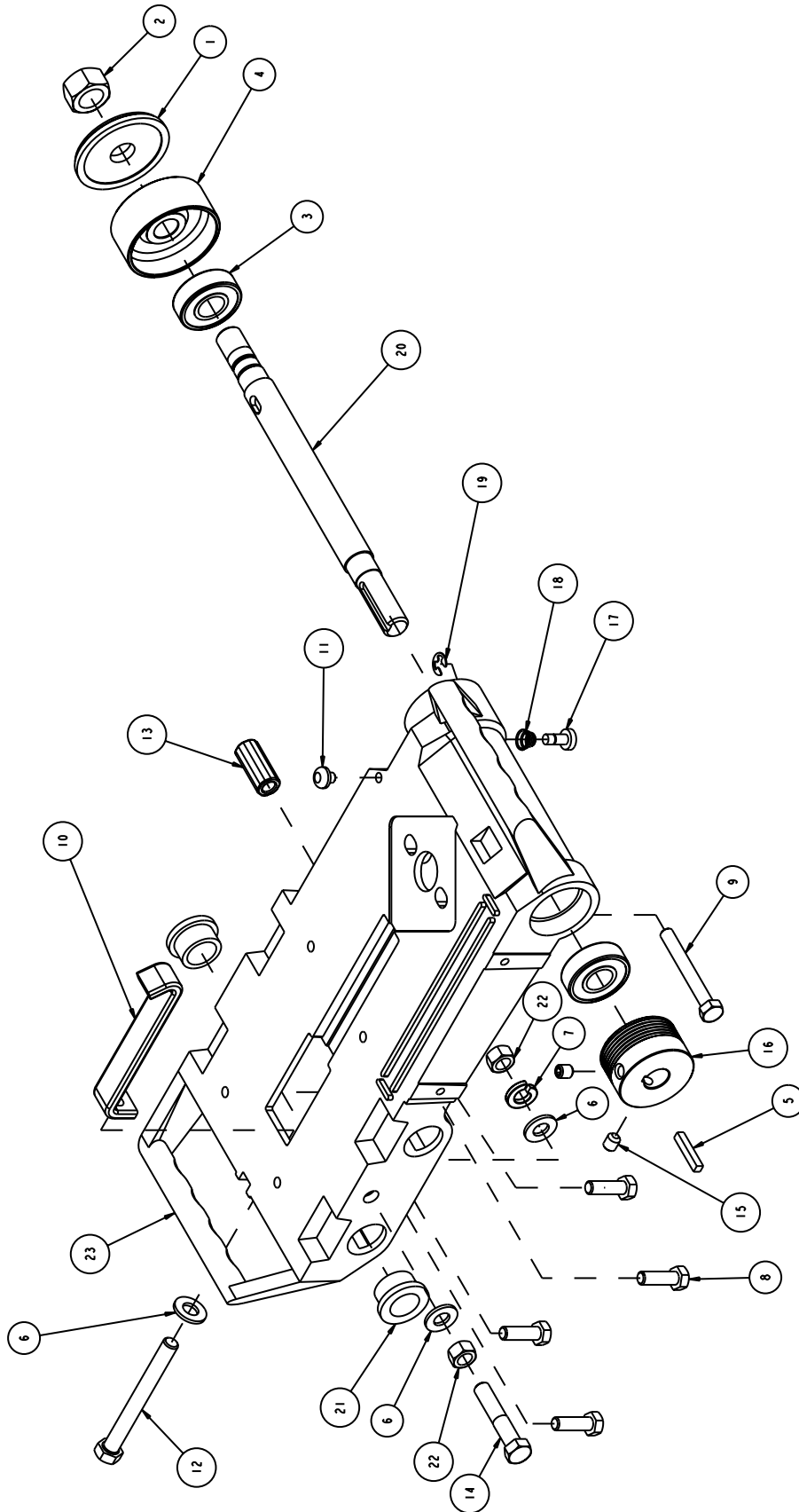
PAVER SAW, MK-1080 HOME DEPOT ASSY, CUTTING HEAD, 166877-HD



PAVER SAW, MK-1080 HOME DEPOT ASSY, CUTTING HEAD, 166877-HD

ITEM NO.	DESCRIPTION	PART OR IDENTIFYING NO.	QTY. REQ.
1	NUT, 3/8-16 HEX	101188	2
2	HANDLE, BRICKSAW	139931	1
3	KEY, 3/16 SQ X 1-1/8	150344	1
4	WASHER, 3/8 SAE FLAT	150923	2
5	WINGNUT, 5/16-18 NYLOK	151746	1
6	WASHER, 5/16 SAE FLAT	151754	5
7	SCREW, WING, 1/4-20 X 1/2	151888	1
8	WASHER, 1/4 SAE FLAT	151915	5
9	SCREW, 1/4-20 X 3/4 HEX HEAD MACHINE	152370	3
10	WASHER, 1/4 SPLIT LOCK	152591	4
11	SCREW, HEX HD CAP, 1/4-20 X 1	152676	1
12	NUT, HEX, TW, 5/16-18	153942	4
13	ASSY, BLADE GUARD	154297-HD	1
14	SCREW, 5/16-18 X 3/8 SOCKET HEAD SET	157083	2
15	SCREW, SOCKET HEAD CAP, 3/8-16 X 1	157529	2
16	BELT, MCIRO-V, 260J6	158194	1
17	PULLEY, 6J17 X 5/8 BORE	158214	1
18	GUARD, BELT (COMP)	158319-HD	1
19	GRIP, HANDLE, 7/8 ID	158608	1
20	BRACKET, INNER BELTGUARD	158611	1
21	MOTOR, 115V, 1-1/2 HP	160127	1
22	ASSY, MOTOR MOUNT	166878-HD	1
23	GUARD, SPLASH, MODIFIED	167172	1

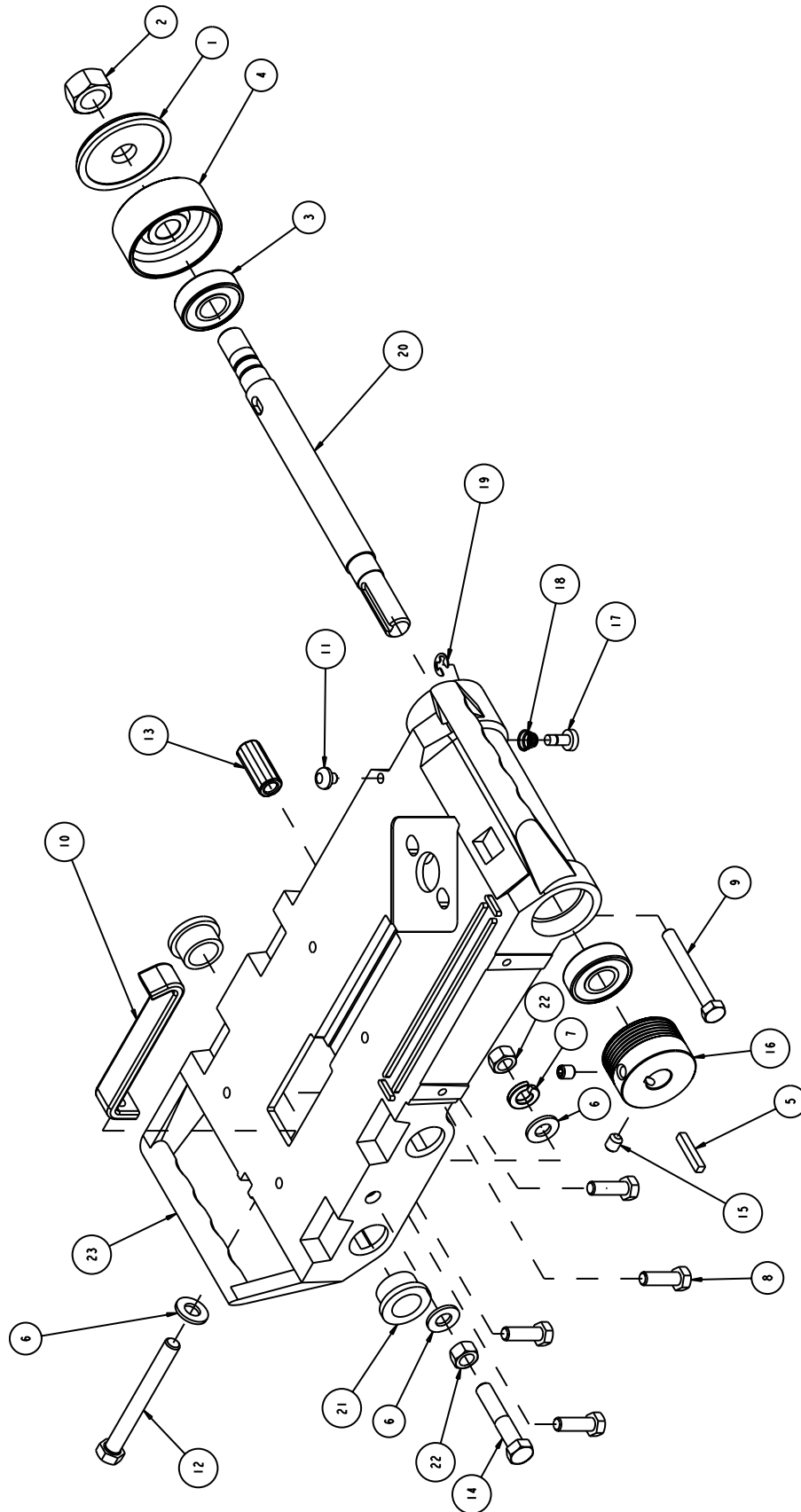
PAVER SAW, MK-1080 ASSY, MOTOR MOUNT, 166878



PAVER SAW, MK-1080 ASSY, MOTOR MOUNT, 166878

ITEM NO.	DESCRIPTION	PART OR IDENTIFYING NO.	QTY. REQ.
1	FLANGE, OUTER	135830	1
2	NUT, HEX, 5/16-18	135848	1
3	BEARING, BALL, 17 X 40 X 12 MM	137711	2
4	FLANGE, Ø2-3/8 INNER	137737	1
5	KEY, 3/16 SQ X 1-1/8	150344	1
6	WASHER, 3/8 SAE FLAT	150923	3
7	WASHER, 3/8 SPLIT LOCK	150925	1
8	SCREW, 5/16-18 X 1 HEX HEAD MACHINE	151743	4
9	BOLT, HEX HD TAP, 5/16-18 X 2-1/2	151748	1
10	STRAP, 1 INCH MOTOR ADJ.	152673	1
11	BUMPER, RUBBER, 1/2 DIA	152674	1
12	BOLT, 3/8-16 X 3-1/2 HEX HEAD TAP	153147	1
13	PIVOT, BLADE GUARD	153208	1
14	SCREW, HEX HD CAP, 3/8-16 X 2	153485	1
15	SCREW, 5/16-18 X 3/8 SOCKET HEAD SET	157083	2
16	PULLEY, 6J19 X 5/8 BORE	158199	1
17	BUTTON, SHAFT LOCK	158200	1
18	SPRING, BLADE SHAFT LOCK	158201	1
19	RING, 1/4 E-STYLE RETAINING	158202	1
20	SHAFT, BLADE	158222	1
21	BUSHING, 3/4 ID FLANGED	159207	2
22	NUT, 3/8-16 HEX	159863	2
23	MOUNT, MOTOR (COMP)	166879	1

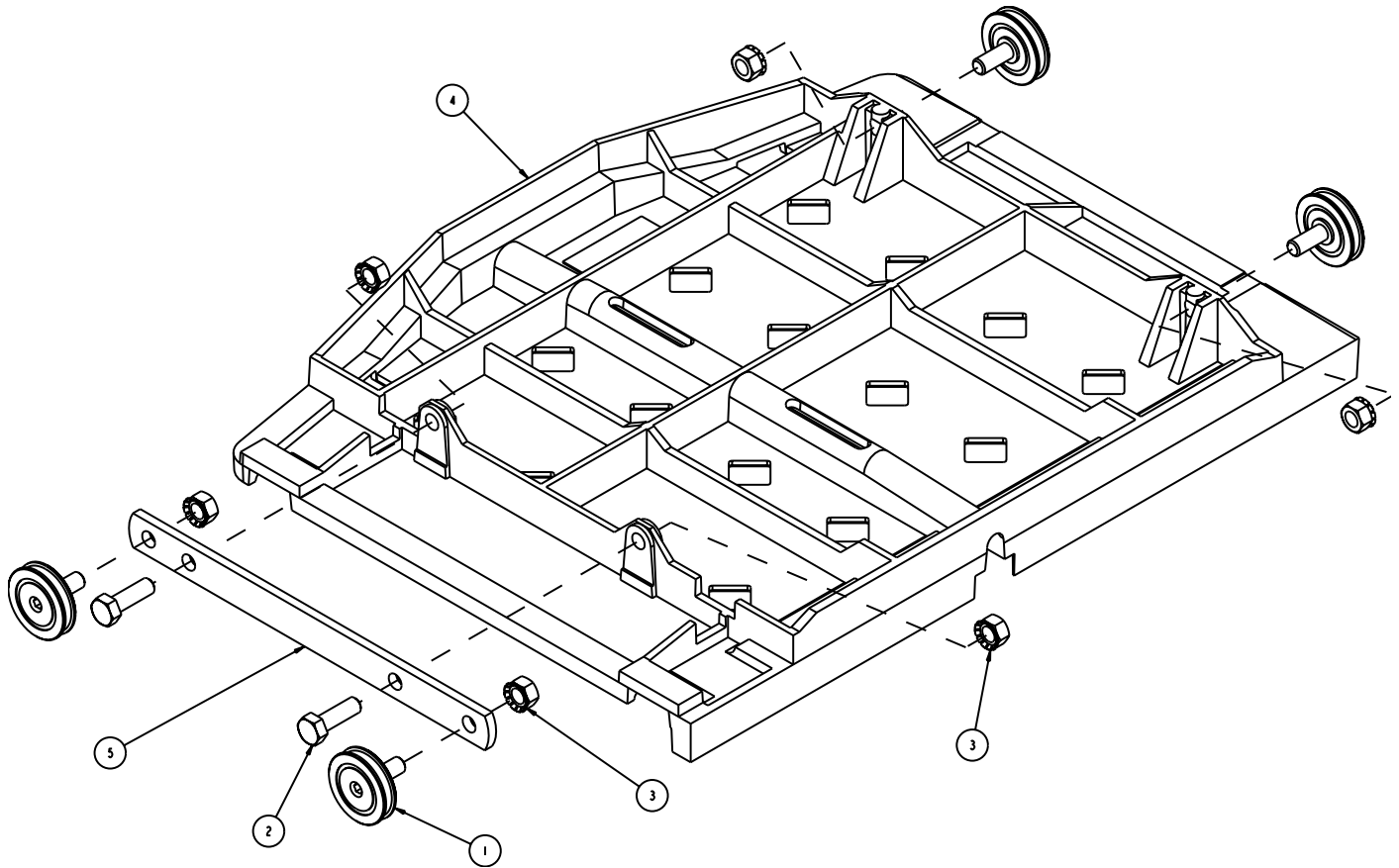
PAVER SAW, MK-1080 HOME DEPOT ASSY, MOTOR MOUNT, 166878-HD



PAVER SAW, MK-1080 HOME DEPOT ASSY, MOTOR MOUNT, 166878-HD

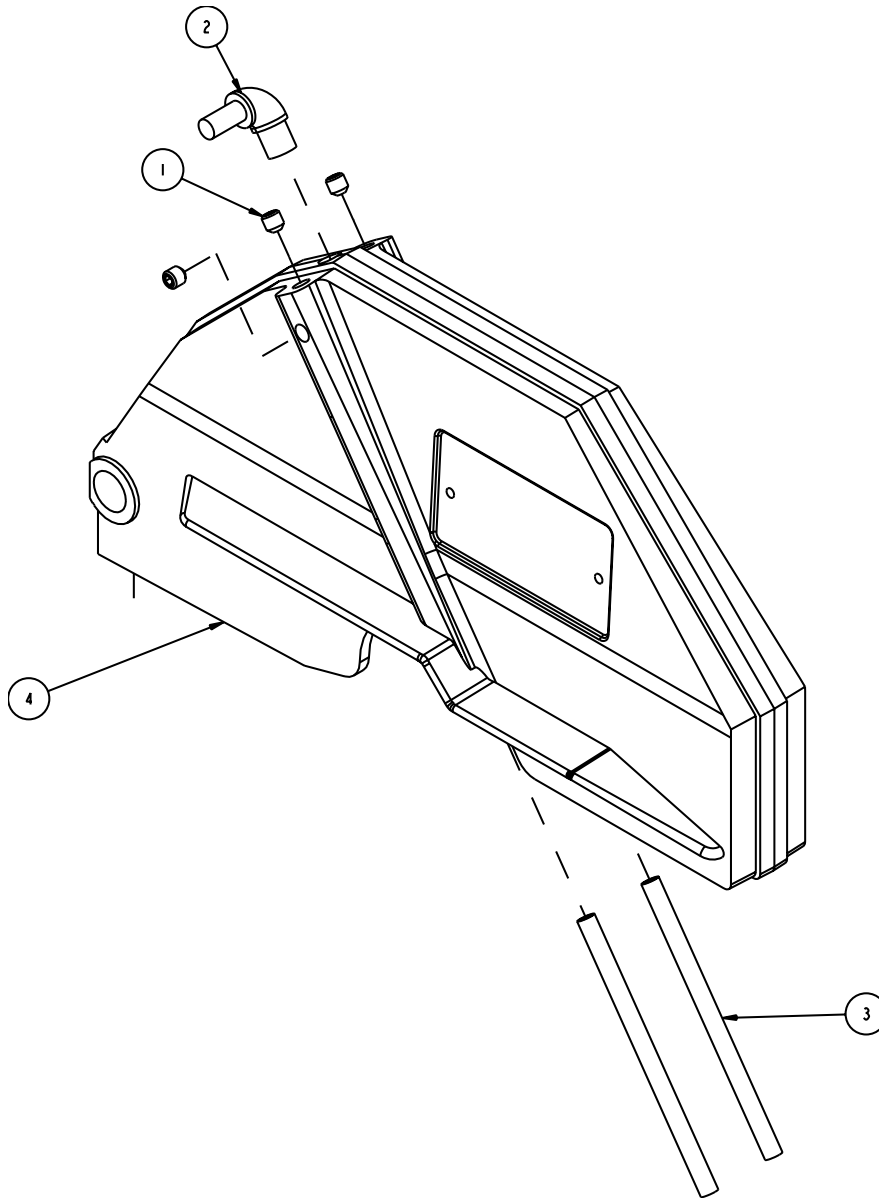
ITEM NO.	DESCRIPTION	PART OR IDENTIFYING NO.	QTY. REQ.
1	FLANGE, OUTER	135830	1
2	NUT, HEX, 5/16-18	135848	1
3	BEARING, BALL, 17 X 40 X 12 MM	137711	2
4	FLANGE, Ø2-3/8 INNER	137737	1
5	KEY, 3/16 SQ X 1-1/8	150344	1
6	WASHER, 3/8 SAE FLAT	150923	3
7	WASHER, 3/8 SPLIT LOCK	150925	1
8	SCREW, 5/16-18 X 1 HEX HEAD MACHINE	151743	4
9	BOLT, HEX HD TAP, 5/16-18 X 2-1/2	151748	1
10	STRAP, 1 INCH MOTOR ADJ.	152673	1
11	BUMPER, RUBBER, 1/2 DIA	152674	1
12	BOLT, 3/8-16 X 3-1/2 HEX HEAD TAP	153147	1
13	PIVOT, BLADE GUARD	153208	1
14	SCREW, HEX HD CAP, 3/8-16 X 2	153485	1
15	SCREW, 5/16-18 X 3/8 SOCKET HEAD SET	157083	2
16	PULLEY, 6J19 X 5/8 BORE	158199	1
17	BUTTON, SHAFT LOCK	158200	1
18	SPRING, BLADE SHAFT LOCK	158201	1
19	RING, 1/4 E-STYLE RETAINING	158202	1
20	SHAFT, BLADE	158222	1
21	BUSHING, 3/4 ID FLANGED	159207	2
22	NUT, 3/8-16 HEX	159863	2
23	MOUNT, MOTOR (COMP)	166879-HD	1

PAVER SAW, MK-1080 ASSY, TABLE, 166880



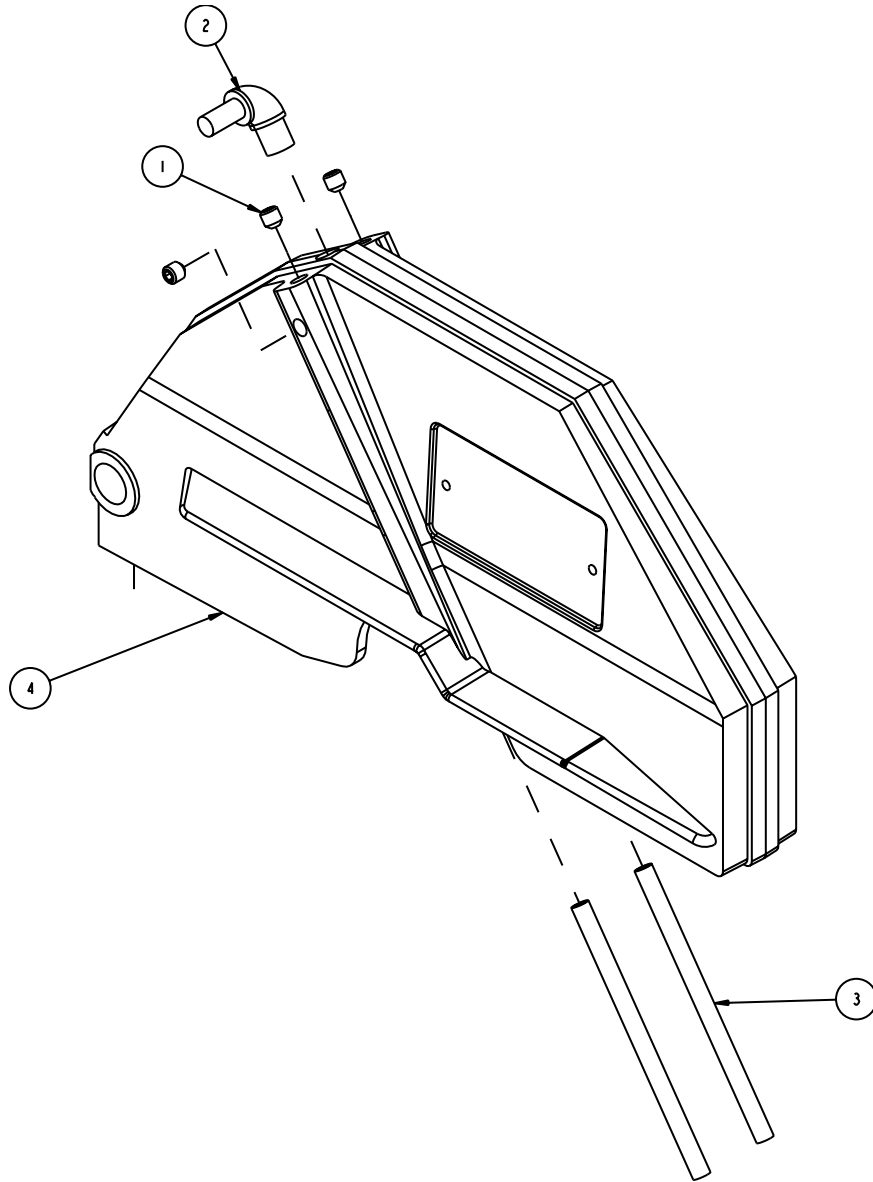
ITEM NO.	DESCRIPTION	PART OR IDENTIFYING NO.	QTY. REQ.
1	WHEEL, CONVEYOR CART	133090	4
2	SCREW, 5/16-18 X 1 HEX HEAD MACHINE	151743	2
3	NUT, HEX, TW, 5/16-18	153942	6
4	TABLE (COMP)	166881	1
5	BRACKET, TABLE WHEEL	167173	1

PAVER SAW, MK-1080 ASSY, BLADE GUARD, 154297



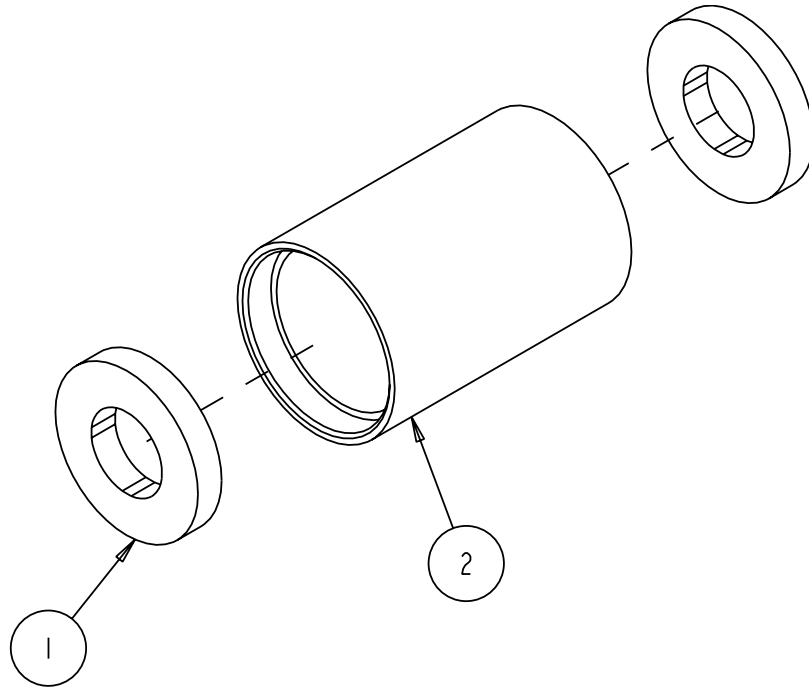
ITEM NO.	DESCRIPTION	PART OR IDENTIFYING NO.	QTY. REQ.
1	SCREW, 5/16-18 X 1/2 SOCKET HEAD SET	152607	3
2	ELBOW, 1/8 MNPT X 1/4 BARB, BRASS	154652	1
3	TUBE, WATER	155389	2
4	GUARD, BLADE (COMP)	155608	1

PAVER SAW, MK-1080 HOME DEPOT ASSY, BLADE GUARD, 154297-HD



ITEM NO.	DESCRIPTION	PART OR IDENTIFYING NO.	QTY. REQ.
1	SCREW, 5/16-18 X 1/2 SOCKET HEAD SET	152607	3
2	ELBOW, 1/8 MNPT X 1/4 BARB, BRASS	154652	1
3	TUBE, WATER	155389	2
4	GUARD, BLADE (COMP)	155608-OR	1

PAVER SAW, MK-1080, ASSY, SPRING BUSHING, 166874



ITEM NO.	DESCRIPTION	PART OR IDENTIFYING NO.	QTY. REQ.
1	GUIDE BAR COVER	152393	2
2	BUSHING, SPRING	166876	1

ORDERING INFORMATION

You may order MK Diamond products through your local MK Diamond distributor or, you may order direct from MK Diamond.

When ordering direct from MK Diamond, please have the following information ready before calling:

- The Model Number of the saw
- The Serial Number of the saw
- Where the saw was purchased and when
- The Part Number for the part(s) being ordered
- The Part Description for the part(s) being ordered

NOTE: There is a \$25.00 minimum order when ordering direct from MK Diamond. A \$5.00 charge will be added to orders having a net billing value under \$50.00. All purchases must be made using VISA, MasterCard or American Express.

All parts may be ordered by calling toll free to – 800 421-5830 or 310 539-5221 and asking for Customer Service. For technical questions, call – 800 474-5594.

RETURN MATERIALS POLICY

To expedite the service relative to the return of a product purchased through MK Diamond, please observe the following:

NOTE: When returning all items, they must have been purchased within the previous twelve (12) months.

- Have the Model Number of the saw
- Have the Serial Number of the saw
- Have the location of where the saw was purchased
- Have the date when the saw was purchased
- Contact Customer Service for approval to return the item(s)
- Obtain a Returned Goods Number (RGA) authorizing the return
- Follow the packaging instructions in the following section
- Ensure your item(s) are prepaid to the destination

For returned items, call toll free to – 800 421-5830 or 310 539-5221 and ask for Customer Service. For technical questions, call – 800 474-5594 or 310 257-2845.

PACKAGING INSTRUCTIONS

- Remove the Cutting Head and Support Angle Assembly
- Dry the saw before shipping
- When packing, include the following: Saw, Diamond Blade, Blade Guard and Support Angle Assembly and Adjustable Cutting Guide (Other Accessories are not required)
- Package the unit in its original container or one of comparable size (do not ship the unit partially exposed)
- Ensure all parts are secured in the packaging to prevent moving

AUTHORIZED SERVICE CENTERS

For quicker repair time, you may contact MK Diamond Customer Service, toll free, at 800 421-5830 or 310 539-5221 for the Authorized Service Center closest to you or visit our web site at www.mkdiamond.com. For technical questions, call – 800 474-5594.

CONTACT:

Please contact MK Diamond Products, Inc. Customer Service Department with any questions you might have regarding distributors, parts or service.

Telephone: **(800) 421-5830**

Fax: **(310) 539-5158**

E-mail: **Customer_Service@MKDiamond.com**

Customer Service Hours: **Monday through Friday, 6AM-4PM PST**

MK Diamond Products, Inc.

1315 Storm Parkway

Torrance, CA 90501

MK DIAMOND PRODUCTS, INC. LIMITED WARRANTY

MK DIAMOND PRODUCTS, INC. will guarantee every machine they build, to be free from defects in material and workmanship for (1) one year from date of purchase. The obligation of MK DIAMOND PRODUCTS, INC. under this warranty is limited to the repair or replacement of any parts which, under normal use, prove to be defective in material or workmanship. The parts involved or the unit in question should be returned to MK DIAMOND PRODUCTS, INC. or to a point designated by us, transportation prepaid.

This warranty does not obligate us to bear the cost of labor or transportation charges in connection with replacement or repair of defective parts. Likewise, it shall NOT apply to any unit which has been subjected to misuse, neglect or accident. This warranty does NOT apply to any machine which has been repaired or altered outside our factory.

This warranty does NOT obligate MK DIAMOND PRODUCTS, INC., with respect to items not of our manufacture, such as engines, motors, hydraulics, etc., which are subject to their own guarantees and warranties.

We shall in no event be liable for consequential damages or contingent liabilities arising out of failure of any equipment or parts to operate properly.

© COPYRIGHT 2012, MK DIAMOND PRODUCTS, INC. ALL RIGHTS RESERVED.

The MK Diamond logo is a registered trademark of MK Diamond Products, Inc. and may not be used, reproduced, or altered without written permission. All other trademarks are the property of their respective owners and used with permission.

MK Diamond may have patents, patent applications, trade marks, copyrights of other intellectual property right covering this product in this document.

This manual MUST accompany the equipment at all times. This manual is considered a permanent part of the equipment and should remain with the unit if resold.

The information and specifications included in this publication were in effect at the time of approval for printing.

**MK DIAMOND 1080 PAVER SAW
OPERATION & PARTS MANUAL**



MK Diamond Products, Inc.
1315 Storm Parkway
Torrance, CA 90501

Toll-Free: (800) 421-5830
Phone: (310) 539-5221
Fax: (310) 539-5158
www.mkdiamond.com