

**MK-20 SERIES
OWNER'S MANUAL,
OPERATING INSTRUCTIONS
& PARTS LIST**

**Gas Powered
Concrete Saw**



Revision 304	05.2013
Manual Part# 156777	

Caution: Read all safety and operating instructions before using this equipment. This owner's manual **MUST** accompany the equipment at all times.

FIGURE 1 - PARTS LIST: MK-2020HSP CONCRETE SAW - P/N 156498

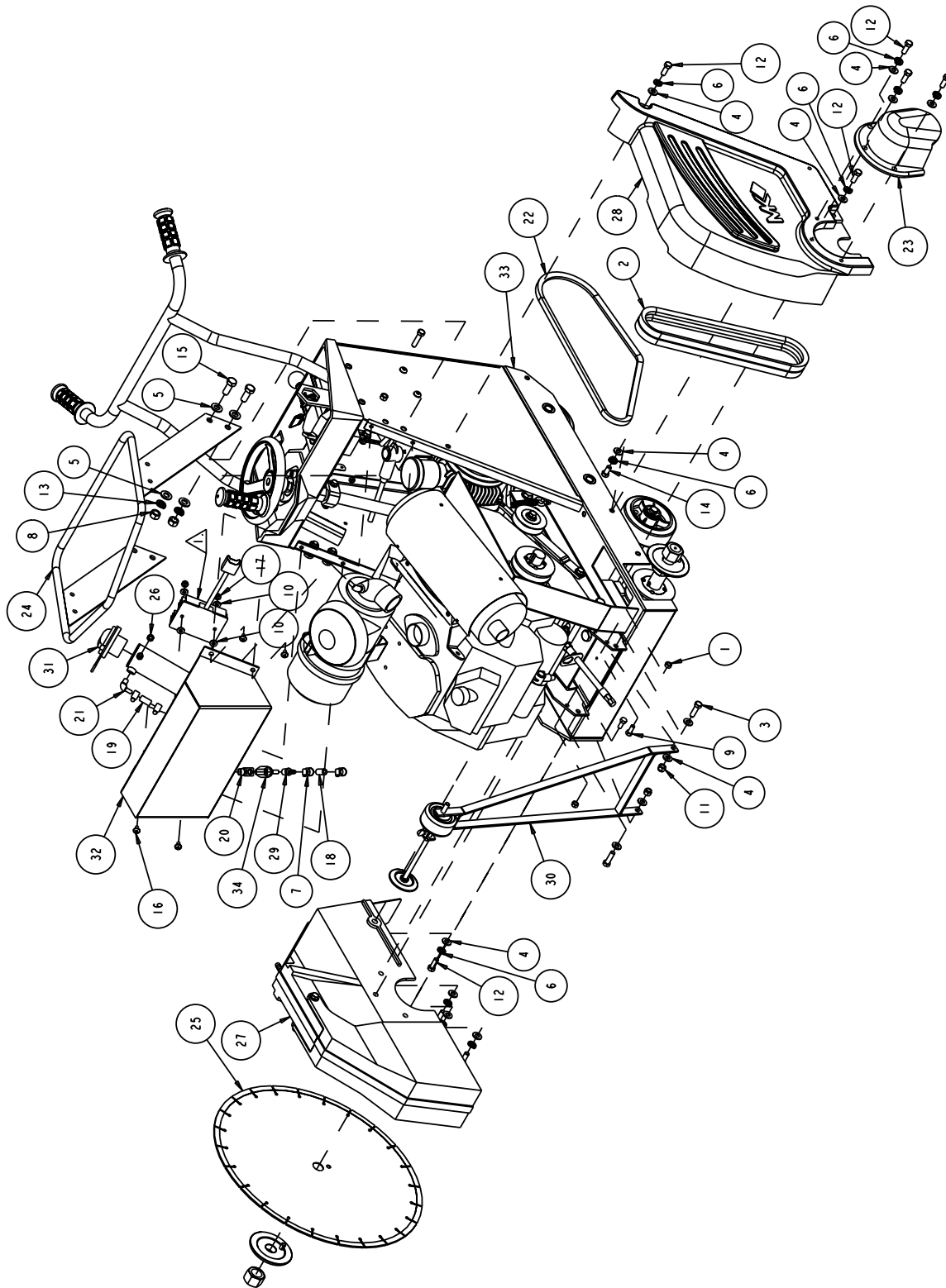
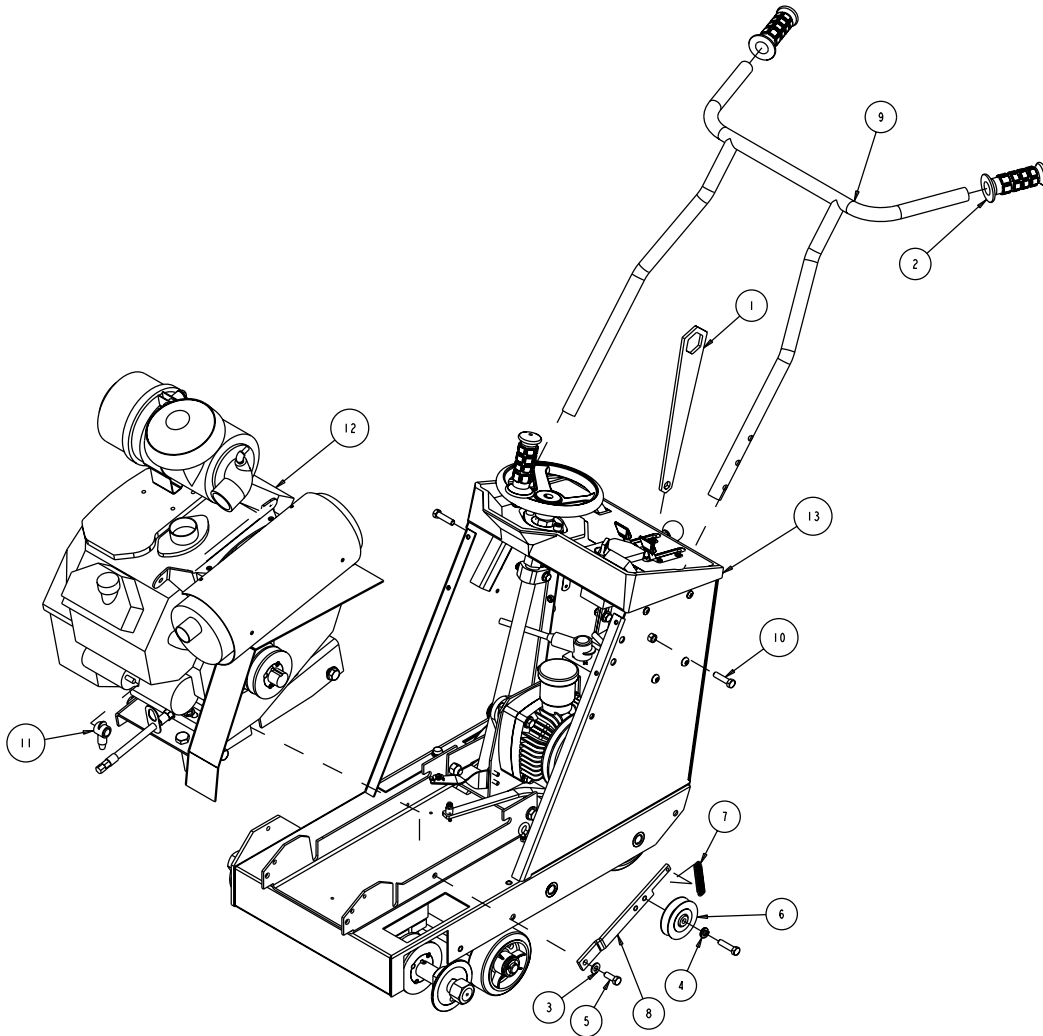


FIGURE 1 - PARTS LIST: MK-2020HSP CONCRETE SAW - P/N 156498

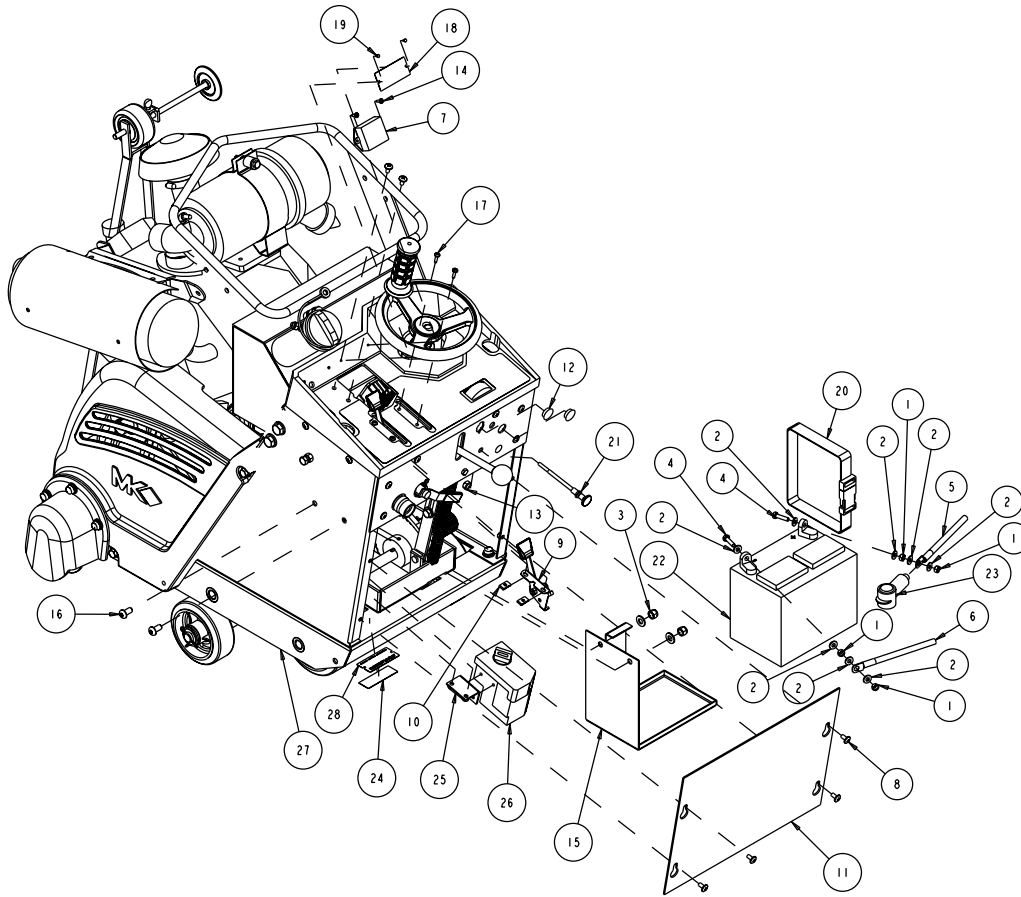
ITEM NO.	DESCRIPTION	PART OR IDENTIFYING NO.	QTY. REQ.
1	NUT, HEX, 5/16 - 18	101196	2
2	BELT, BX34	150764	2
3	SCREW, 3/8 - 16 X 1 -1/4 HEX HEAD CAP	150774	2
4	WASHER, FLAT, SAE 3/8	150923	17
5	WASHER, 1/2 SAE FLAT	150924	8
6	WASHER, LOCK, SPLIT, 3/8	150925	11
7	CLAMP, HOSE, 5.8	151198	4
8	NUT, 1/2 - 13 HEX	151282	4
9	SCREW, HEX HD, CAP, 5/16 - 18 X 3/4	151369	2
10	WASHER, 1/4 SAE FLAT	151915	12
11	NUT, 3/8 - 16 NYLOK HEX	152505	4
12	SCREW, HEX HD CAP, 3.8 -16 X 1	152507	10
13	WASHER, 1/2 SPLIT LOCK	153524	4
14	SCREW, HEX, 3/8 - 16 X 3.4	153527	1
15	SCREW, 1/2 - 13 X 1 -1/4 HEX HEAD CAP	153532	4
16	SCREW, 1/4 - 20 X 1/2 TRUSS HEAD	153880	10
17	NUT, HEX, TW, 1/4 - 20	153941	2
18	HOSE, 1/4 FUEL, 12"	154163	1
19	HOSE, 1/4 FUEL, 24"	154163	1
20	ELBOW, 1/4 MNPT STREET	154615	1
21	ELBOW, 1/8 MNPT X 1/4 BARB 90DEG	154652	1
22	BELT, AX-42	156110	1
23	GUARD, SHAFT (COMP)	156307	1
24	LIFTING BAIL	156543	1
25	BLADE, MK-799D 16 X 125 X 1	157769	1
26	NUT, HEX, NYLK, 5/16 - 18	158289	1
27	ASSY, BLD GRD 20"	158818	1
28	BELTGUARD (COMP)	159888	1
29	FITTING, PUSH ON HOSE 1/4 X 1/4 MALE	165183	1
30	ASSY, POINTER, CONC SAW	166465	1
31	CAP, 2" FUEL FILLER	167220	1
32	TANK, FUEL, 2.5 GAL	169353	1
33	ASSY, FRAME, LESS ENGINE	169719	1
34	VALVE, BALL, 1/4"M TO 1/4"F	231248	1

FIGURE 1 - PARTS LIST: MK-2020HSP CONCRETE SAW - P/N 156498



ITEM NO.	DESCRIPTION	PART OR IDENTIFYING NO.	QTY. REQ.
1	WRENCH, BOX END, 1-1/2 X 9/16	137976	1
2	GRIP, HANDLE, 1/0 ID	150842	2
3	WASHER, FLAT, SAE, 3/8	150923	3
4	WASHER, LOCK, SPLIT, 3.8	150925	1
5	SCREW, HEX HD CAP, 3/8 - 16 X 1	152507	8
6	PULLEY, 1A30 X 1/2 BORE IDLER	153797	1
7	SPRING, 9.16 X 2.5 EXTENSION	153807	1
8	BRACKET, IDLER PULLEY	154244	1
9	WELDMNT, HANDLEBAR	156516	1
10	SCREW, HEX HEAD 3.8 - 16 X 1 - 1/2 LG.	156656	2
11	COVER, 8 - 4 AWG TERMINAL, RED	169355	1
12	ASSY, ENGINE, HONDA GX630	169713	1
13	ASSY, FRAME, LESS ENGINE	169719	1

FIGURE 1 - PARTS LIST: MK-2020HSP CONCRETE SAW - P/N 156498



ITEM NO.	DESCRIPTION	PART OR IDENTIFYING NO.	QTY. REQ.
1	NUT, HEX, 1/4 -20	151893	4
2	WASHER, 1/4 SAE FLAT	151915	12
3	NUT, 3/8 -16 NYLOK HEX	152505	4
4	SCREW, HEX HD CAP, 1/4 - 20 X 1	152676	2
5	CABLE, 4GA X 48 RED BATTERY	153848	1
6	CABLE, 4GA X 24 BLACK BATTERY	153849	1
7	TACHOMETER/HOURMETER	153877	1
8	SCREW, 1/4 -20 X 1/2 TRUSS HEAD	153880	10
9	ASSY, THROTTLE CONTROL	155406	1
10	NUT, 10 -24 CLIP	155407	2
11	PANEL, TOWER LOWER BACK	156505	1
12	PLUG, HOLE PLASTIC 3/4"	156615	2
13	NUT, 3/8 - 24 HEX JAM	156623	1
14	SCREW, PAN HD SELF TAP 8 - 32 X 1/2	156632	2
15	BOX, BATTERY	156634	1

FIGURE 1 - PARTS LIST: MK-2020HSP CONCRETE SAW - P/N 156498

ITEM NO.	DESCRIPTION	PART OR IDENTIFYING NO.	QTY. REQ.
16	SCREW, BTN HD 3/8 16 X 3/4 SOCK	156635	2
17	SCREW, PAN HD PHIL MS 10 24 X 3/4	156641	2
18	TAG, SERIAL #, BLANK	157500-RW	1
19	DRIVE SCREW, #7 X 5/16 ROUND HEAD	157849	2
20	STRAP, NYLON, 1"	158094	1
21	CABEL, CHOKE, HONDA (COMP)	158816	1
22	BATTERY, 12V, 35AH	162589	1
23	COVER, 1" BATTERY TERMINAL, RED	163940	1
24	TAPE, VHB, 5952 (3.0")	166487	1
25	BRACKET, SWITCH	169714	1
26	WIRING HARNESS, GX630/690	169715	1
27	ASSY, FRAME, LESS ENGINE	169719	1
28	TAG, EVAP, 20S, PARENT	169736-205	1

FIGURE 2 - PARTS LIST: MK-2024HSP CONCRETE SAW - P/N 158777

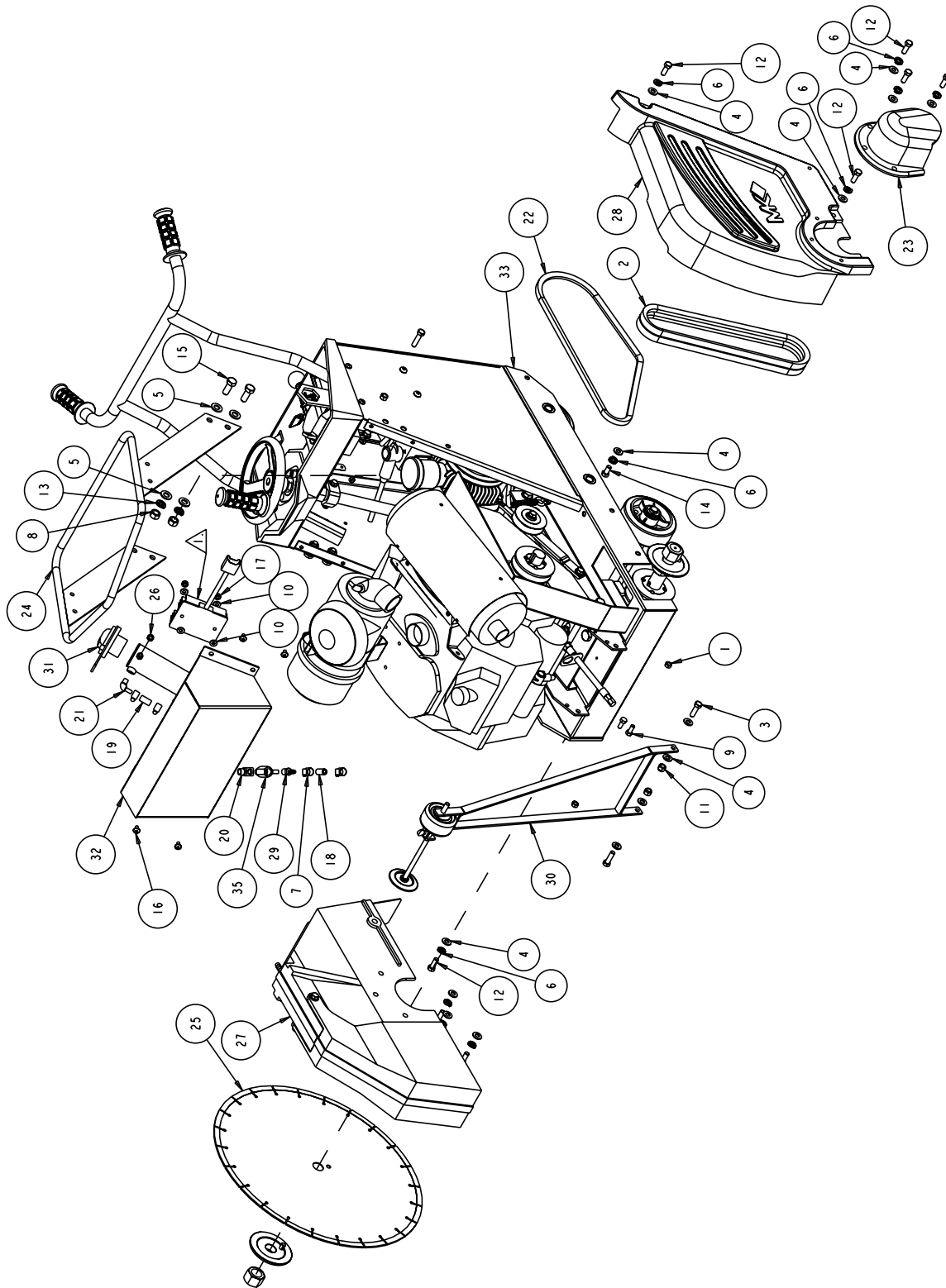
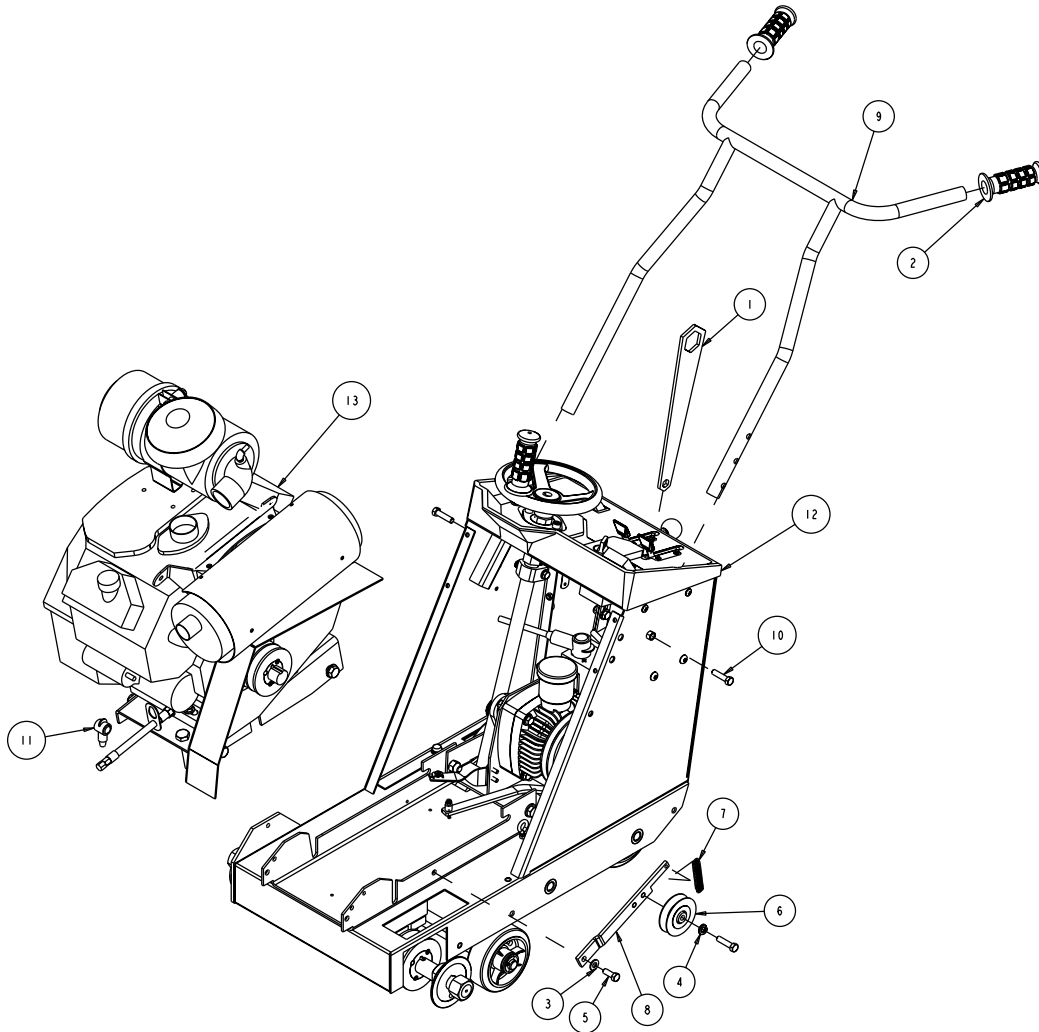


FIGURE 2 - PARTS LIST: MK-2024HSP CONCRETE SAW - P/N 158777

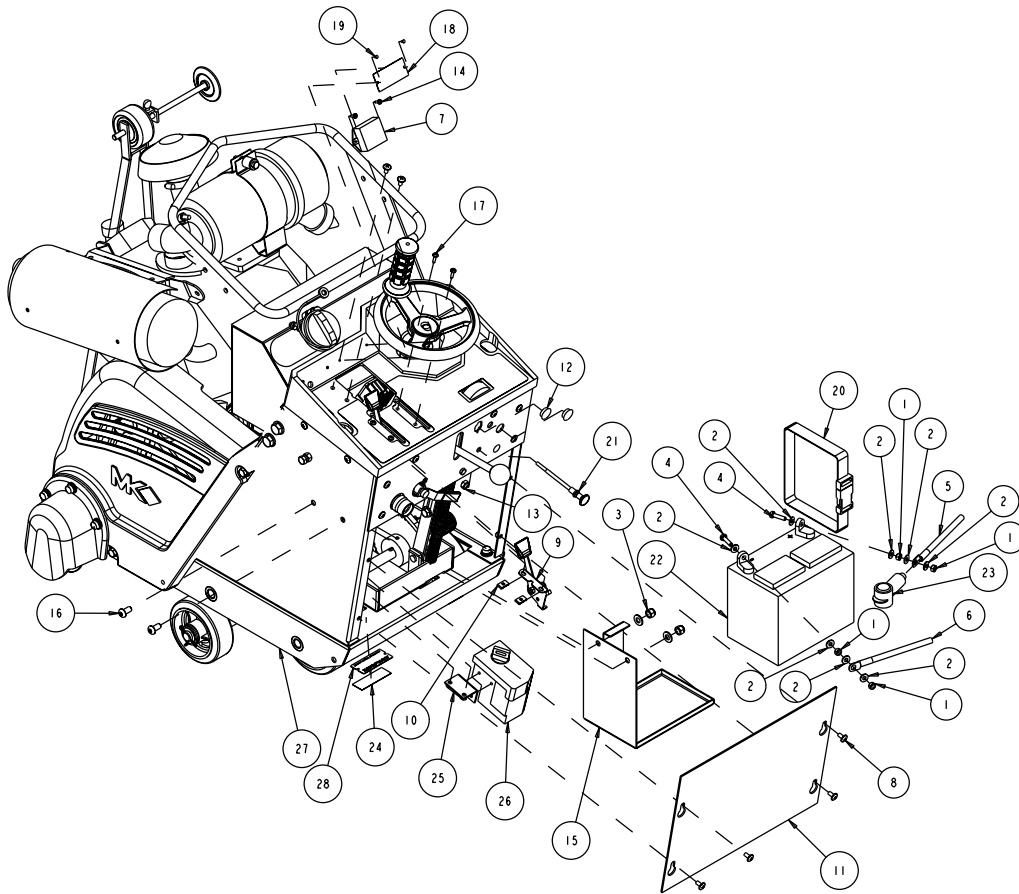
ITEM NO.	DESCRIPTION	PART OR IDENTIFYING NO.	QTY. REQ.
1	NUT, HEX, 5/16 - 18	101196	2
2	BELT, BX34	150764	2
3	SCREW, 3/8 - 16 X 1 -1/4 HEX HEAD CAP	150774	2
4	WASHER, FLAT, SAE 3/8	150923	17
5	WASHER, 1/2 SAE FLAT	150924	8
6	WASHER, LOCK, SPLIT, 3/8	150925	11
7	CLAMP, HOSE, 5.8	151198	4
8	NUT, 1/2 - 13 HEX	151282	4
9	SCREW, HEX HD, CAP, 5/16 - 18 X 3.4	151369	2
10	WASHER, 1/4 SAE FLAT	151915	12
11	NUT, 3/8 - 16 NYLOK HEX	152505	4
12	SCREW, HEX HD CAP, 3.8 -16 X 1	152507	10
13	WASHER, 1/2 SPLIT LOCK	153524	4
14	SCREW, HEX, 3/8 - 16 X 3.4	153527	1
15	SCREW, 1/2 - 13 X 1 -1/4 HEX HEAD CAP	153532	4
16	SCREW, 1/4 - 20 X 1/2 TRUSS HEAD	153880	10
17	NUT, HEX, TW, 1/4 - 20	153941	2
18	HOSE, 1/4 FUEL, 12"	154163	1
19	HOSE, 1/4 FUEL, 24"	154163	1
20	ELBOW, 1/4 MNPT STREET	154615	1
21	ELBOW, 1/8 MNPT X 1/4 BARB 90DEG	154652	1
22	BELT, AX-42	156110	1
23	GUARD, SHAFT (COMP)	156307	1
24	LIFTING BAIL	156543	1
25	BLADE, MK-799D 16 X 125 X 1	157769	1
26	NUT, HEX, NYLK, 5/16 - 18	158289	1
27	ASSY, BLD GRD 20"	158818	1
28	BELTGUARD (COMP)	159888	1
29	FITTING, PUSH ON HOSE 1/4 X 1/4 MALE	165183	1
30	ASSY, POINTER, CONC SAW	166465	1
31	CAP, 2" FUEL FILLER	167220	1
32	TANK, FUEL, 2.5 GAL	169353	1
33	ASSY, FRAME, LESS ENGINE	169719	1
34	ASSY, ENGINE, GX690	170048	1
35	VALVE, BALL, 1/4"M TO 1/4"F	231248	1

FIGURE 2 - PARTS LIST: MK-2024HSP CONCRETE SAW - P/N 158777



ITEM NO.	DESCRIPTION	PART OR IDENTIFYING NO.	QTY. REQ.
1	WRENCH, BOX END, 1-1/2 X 9/16	137976	1
2	GRIP, HANDLE, 1/0 ID	150842	2
3	WASHER, FLAT, SAE, 3/8	150923	3
4	WASHER, LOCK, SPLIT, 3.8	150925	1
5	SCREW, HEX HD CAP, 3.8 - 16 X 1	152507	1
6	PULLEY, 1A30 X 1/2 BORE IDLER	153797	1
7	SPRING, 9.16 X 2.5 EXTENSION	153807	1
8	BRACKET, IDLER PULLEY	154244	1
9	WELDENT, HANDLEBAR	156516	1
10	SCREW, HEX HEAD 3.8 - 16 X 1 - 1/2 LG.	156656	2
11	COVER, 8 - 4 AWG TERMINAL, RED	169355	1
12	ASSY, FRAME, LESS ENGINE	169719	1
13	ASSY, ENGINE, GX690	170048	1

FIGURE 2 - PARTS LIST: MK-2024HSP CONCRETE SAW - P/N 158777

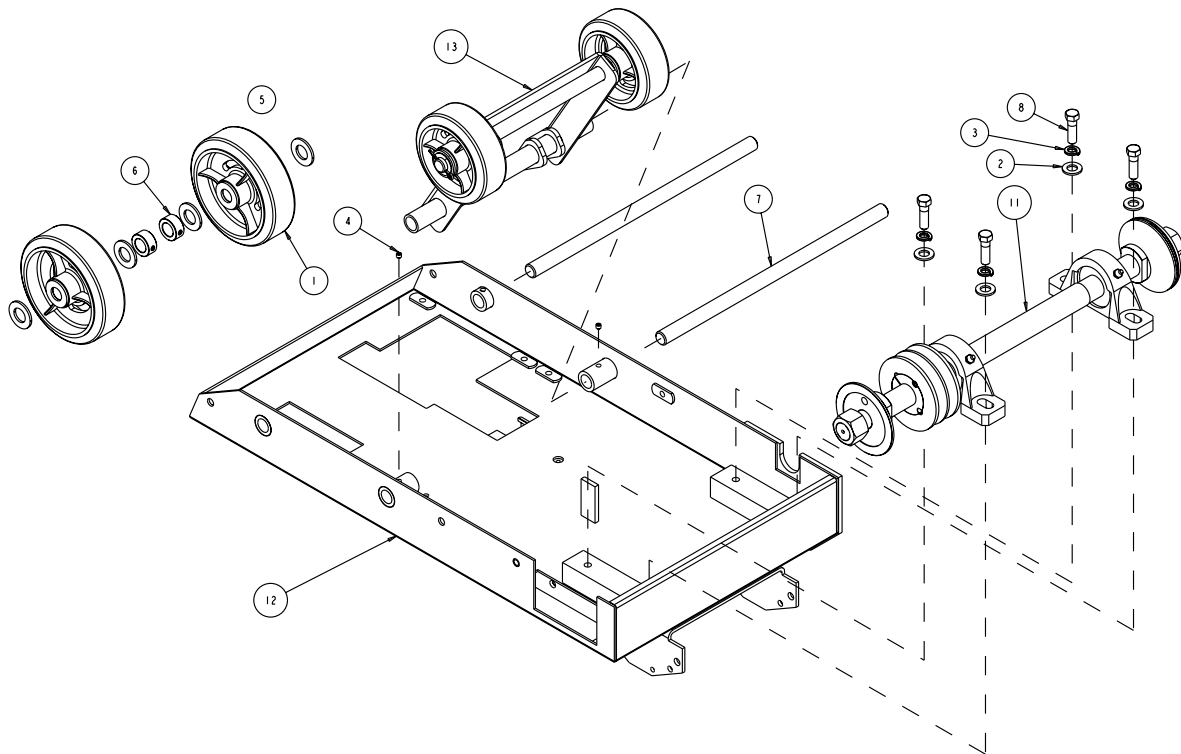


ITEM NO.	DESCRIPTION	PART OR IDENTIFYING NO.	QTY. REQ.
1	NUT, HEX, 1/4 -20	151893	4
2	WASHER, 1/4 SAE FLAT	151915	12
3	NUT, 3/8 -16 NYLOK HEX	152505	4
4	SCREW, HEX HD CAP, 1/4 - 20 X 1	152676	2
5	CABLE, 4GA X 48 RED BATTERY	153848	1
6	CABLE, 4GA X 24 BLACK BATTERY	153849	1
7	TACHOMETER/HOURMETER	153877	1
8	SCREW, 1/4 -20 X 1/2 TRUSS HEAD	153880	10
9	ASSY, TROTTLE CONTROL	155406	1
10	NUT, 10 -24 CLIP	155407	2
11	PANEL, TOWER LOWER BACK	156505	1
12	PLUG, HOLE PLASTIC 3/4"	156615	2
13	NUT, 3/8 - 24 HEX JAM	156623	1
14	SCREW, PAN HD SELF TAP 8 - 32 X 1/2	156632	2
15	BOX, BATTERY	156634	1

FIGURE 2 - PARTS LIST: MK-2024HSP CONCRETE SAW - P/N 158777

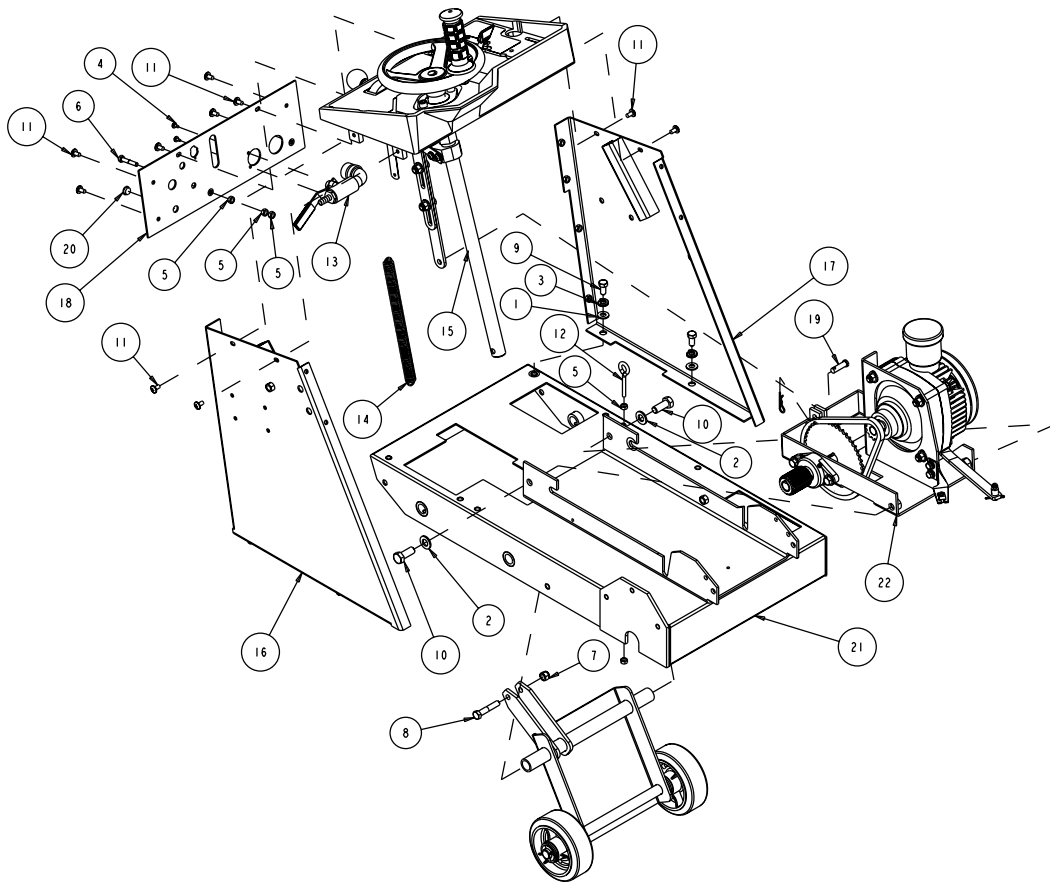
ITEM NO.	DESCRIPTION	PART OR IDENTIFYING NO.	QTY. REQ.
16	SCREW, BTN HD 3/8 16 X 3/4 SOCK	156635	2
17	SCREW, PAN HD PHIL MS 10 24 X 3/4	156641	2
18	TAG, SERIAL #, BLANK	157500-RW	1
19	DRIVE SCREW, #7 X 5/16 ROUND HEAD	157849	2
20	STRAP, NYLON, 1"	158094	1
21	CABEL, CHOKE, HONDA (COMP)	158816	1
22	BATTERY, 12V, 35AH	162589	1
23	COVER, 1" BATTERY TERMINAL, RED	163940	1
24	TAPE, VHB, 5952 (3.0")	166487	1
25	BRACKET, SWITCH	169714	1
26	WIRING HARNESS, GX630/690	169715	1
27	ASSY, FRAME, LESS ENGINE	169719	1
28	TAG, EVAP, 20S, PARENT	169736-20S	1

FIGURE 3 - PARTS LIST: FRAME, LESS ENGINE - P/N 169719



ITEM NO.	DESCRIPTION	PART OR IDENTIFYING NO.	QTY. REQ.
1	WHEEL, REAR CONCRETE SAW	138529	2
2	WASHER, 1/2 SAE FLAT	150924	4
3	WASHER, 7/16 SPLIT LOCK	151051	5
4	SCREW, 5/16 - 18 X 1/2 SOCKET HEAD SET	152607	2
5	WASHER, FLAT, SAE, 3/4	153523	4
6	COLLAR, SET, 3/4"	153814	2
7	AXLE, REAR, Ø 3/4	153873	2
8	SCREW, 7/16 - 14 X 1 - 1/2 HEX HEAD CAP	155155	4
9	ASSY, THROTTLE CONTROL	155406	1
10	ASSY, PIN CLEVIS 3/8 X 1 - /14	156611	1
11	BLADE SHAFT 20HP	156654	1
12	FRAME, WELDMENT	157092	1
13	ASSY, TRUCK	169710	1

FIGURE 3 - PARTS LIST: FRAME, LESS ENGINE - P/N 169719



ITEM NO.	DESCRIPTION	PART OR IDENTIFYING NO.	QTY. REQ.
1	WASHER, FLAT, SAE, 3/8	150923	13
2	WASHER, 1/2 SAE FLAT	150924	2
3	WASHER, LOCK, SPLIT, 3/8	150925	4
4	SCREW, PAN HD SELF TP10-24 X 3/8	151262	2
5	NUT, HEX, 1/4 - 20	151893	6
6	SCREW, HEX HEAD 1/4 - 20 X 1 - 1/2"	151914	1
7	NUT, 3/8 - 16 NYLOK HEX	152505	6
8	SCREW, HEX HD, 3/8 - 16 X 2	153485	2
9	SCREW, HEX, 3/8 - 16 X 3/4	153527	4
10	SCREW, 1/2 - 13 X 1 - 1/4 HEX HEAD CAP	153532	2
11	SCREW, 1/4 - 20 X 1/2 TRUSS HEAD	153880	10
12	EYEBLT, 1/4 - 20 X 2	153887	1
13	ASSY, WATER VALVE	153888	1
14	SPRING, EXTENSION	153957	1
15	LINKAGE, DPTH FEED 1600/9000	155049	1
16	PANEL, RIGHT, 20 SERIES	156500	1
17	PANEL, LEFT, 20 SERIES	156501	1

FIGURE 3 - PARTS LIST: FRAME, LESS ENGINE - P/N 169719

ITEM NO.	DESCRIPTION	PART OR IDENTIFYING NO.	QTY. REQ.
18	PANEL, UPPER BACK TOWER	156504	1
19	ASSY, PIN CLEVIS 3/8 X 1 - 1/4	156611	1
20	PLUG, 1/2 FLUSH HEAD BUTTON	156779	1
21	FRAME, WELDMENT	157092	1
22	ASSY, TRANSMISSION	169711	1

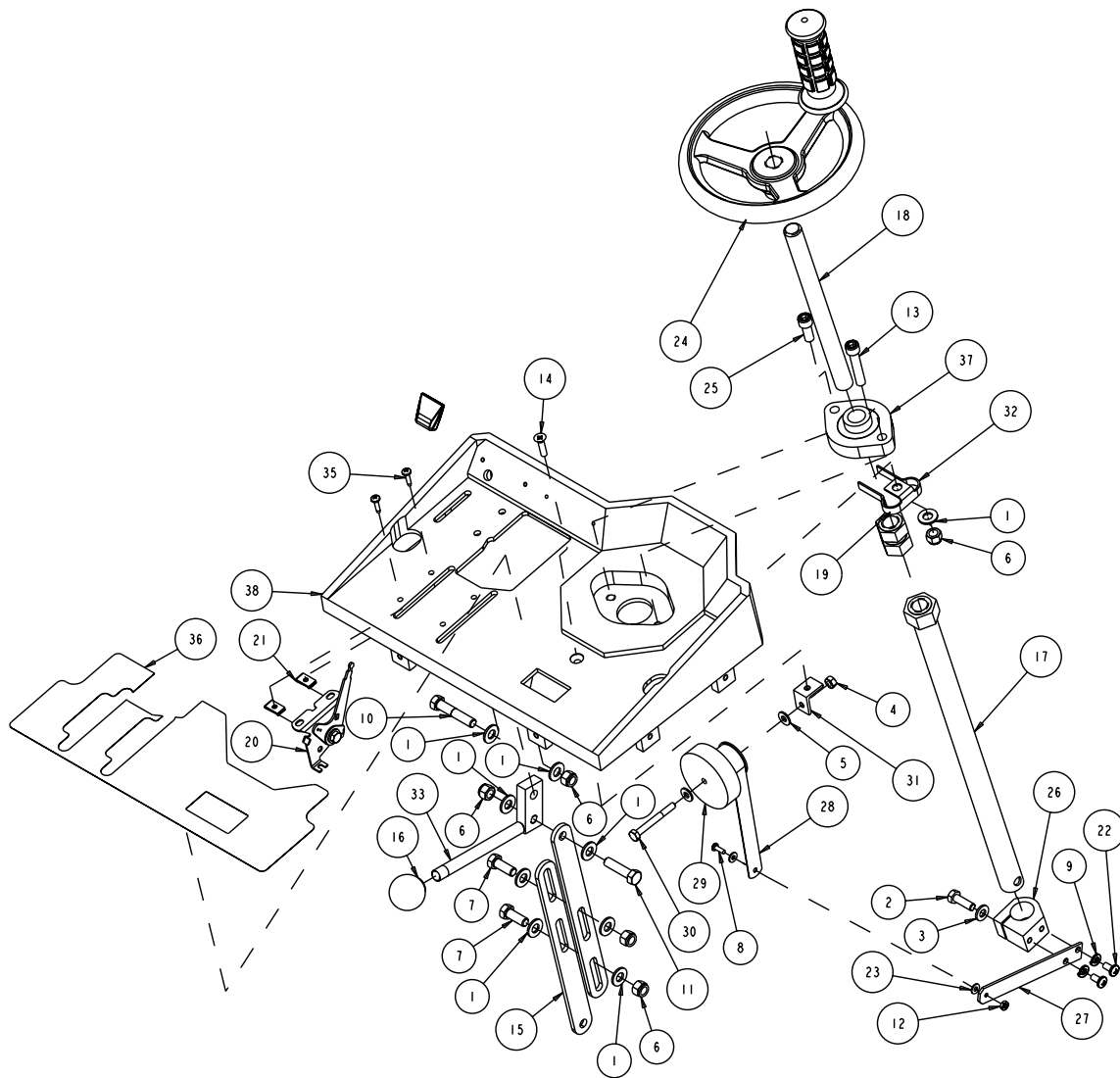
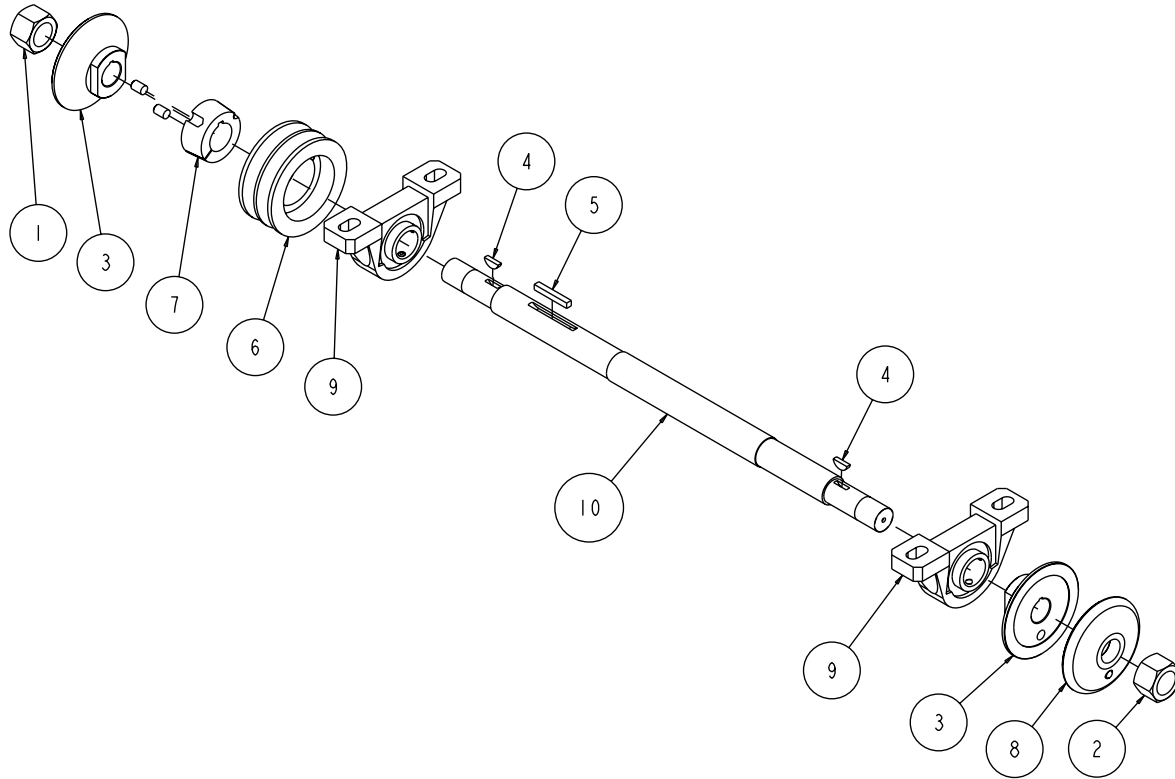


FIGURE 3 - PARTS LIST: FRAME, LESS ENGINE - P/N 169719

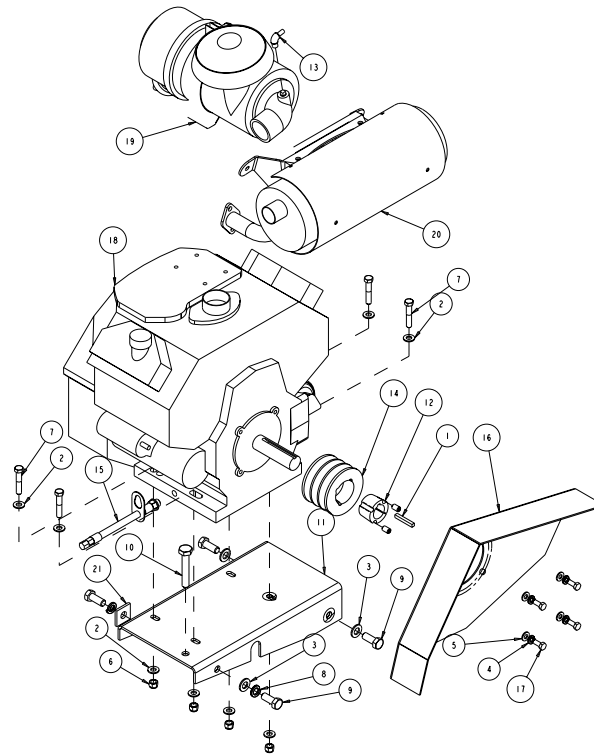
ITEM NO.	DESCRIPTION	PART OR IDENTIFYING NO.	QTY. REQ.
1	WASHER, FLAT, SAE, 3/8	150923	9
2	SCREW, HEX HD, 5/16 - 18 X 1	151743	1
3	WASHER, FLAT, SAE, 5/16	151754	1
4	NUT, HEX, 1/4 - 20	151893	1
5	WASHER, 1/4 SAE FLAT	151915	2
6	NUT, 3/8 -16 NYLOK HEX	152505	5
7	SCREW, HEX HD CAP, 3.8 - 16 X 2	153485	2
8	SCREW, RND HD, #8 - 32 X 1/2	152517	1
9	WASHER, 1/4 SPLIT LOCK	152951	2
10	SCREW, HEX HD, 3/8 - 16 X 1	152507	2
11	SCREW, 3/8 -16 X 1-1/2 HEX HEAD	153528	1
12	NUT, HEX, 8 -32	153549	1
13	SCREW, SOC HD, CAP, 3.8 - 16 X2	153643	1
14	SCREW, FLAT HD, SOC, 1/4 -20 X 1"	153894	1
15	ARM, DRIVE ADJUSTMENT	154242	2
16	KNOB, 1/2 - 20 SSFEM BALL	154486	1
17	LINKAGE, DEPTH FEED 1600/9000	1550449	1
18	STUD, 3/4 - 10 X 10"	155062	1
19	NUT, 3/4 - 10 HEX	155063	2
20	ASSY, THROTTLE CONTROL	155406	1
21	NUT, 10 -24 CLIP	155407	2
22	SCREW, PAN HD, CAP, 14 - 20 X 1/2	155452	2
23	WASHER, FLAT, SAE, #8	155454	2
24	ASSY, CRANK WHEEL, 3/4 - 10	155457	1
25	SCREW, SOCKET HEAD CAP 3.8 - 16 X 1	156602	1
26	CLAMP, DEPTH INDICATOR	156603	1
27	ARM, DEPTH INDICATOR	156604	1
28	SPRING, DEPTH GAUGE	156605	1
29	SPOOL, 2.75 DIA DEPTH INDICATOR	156606	1
30	SCREW, HEX HD, CAP, 1/4 - 20 X 2 - 1/4	156607	1
31	BRACKET, DEPTH INDICATOR	156608	1
32	SPRING, DETENT	156609	1
33	HANDLE, ENGAGE	156610	1
34	ASSY, PIN CLEVIS 3.8 X 1 - 1/4	156611	1
35	SCREW, PAN HD PHIL MS 10 - 24 X 3/4	156641	2
36	LABEL, CONTROL PANEL	165136	1
37	BEARING, FLANGE, 3/4 ID, FD204	165971	1
38	CASING, CONTROL PANEL - COMP	169712	1

FIGURE 4 - PARTS LIST: BLADE SHAFT - P/N 156654



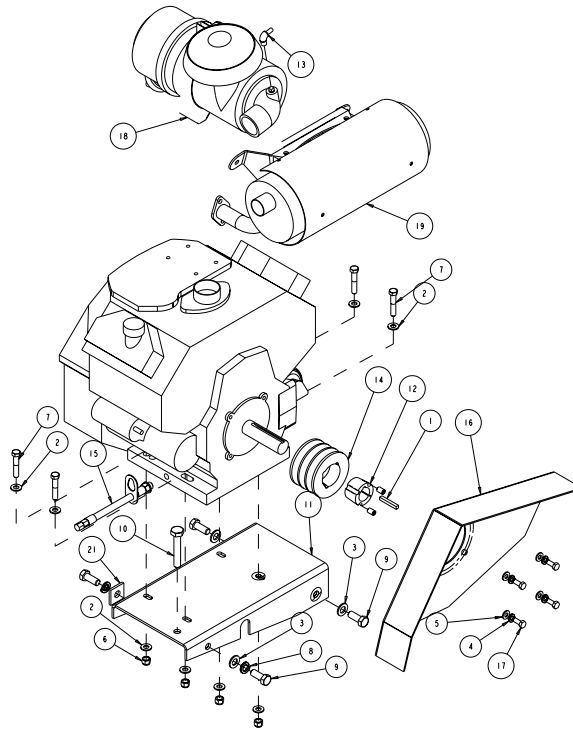
ITEM NO.	DESCRIPTION	PART OR IDENTIFYING NO.	QTY. REQ.
1	NUT, 1 - 14 RIGHT HAND	138693	1
2	NUT, 1 - 14 LEFT HAND	138701	1
3	FLANGE, INNER	150731	2
4	KEY, 3/16 X 3/4 WOODRUFF	150794	2
5	KEY, SQUARE, 1/4 X 1 - 3/4	150796	1
6	PULLEY, 2A34B38 X 1610 TB	150010	1
7	BUSHING, TPR-LOCK 1610X1 - 3/16"	155011	1
8	ASSY, OUTER FLANGE, 4"	155451	1
9	BEARING, 1 - 3/16 ID PILLOW BLOCK	155622	2
10	SHAFT, 1 3/16 BLADE	156599	1

FIGURE 5 - PARTS LIST: ENGINE, HONDA GX630 - P/N 169713



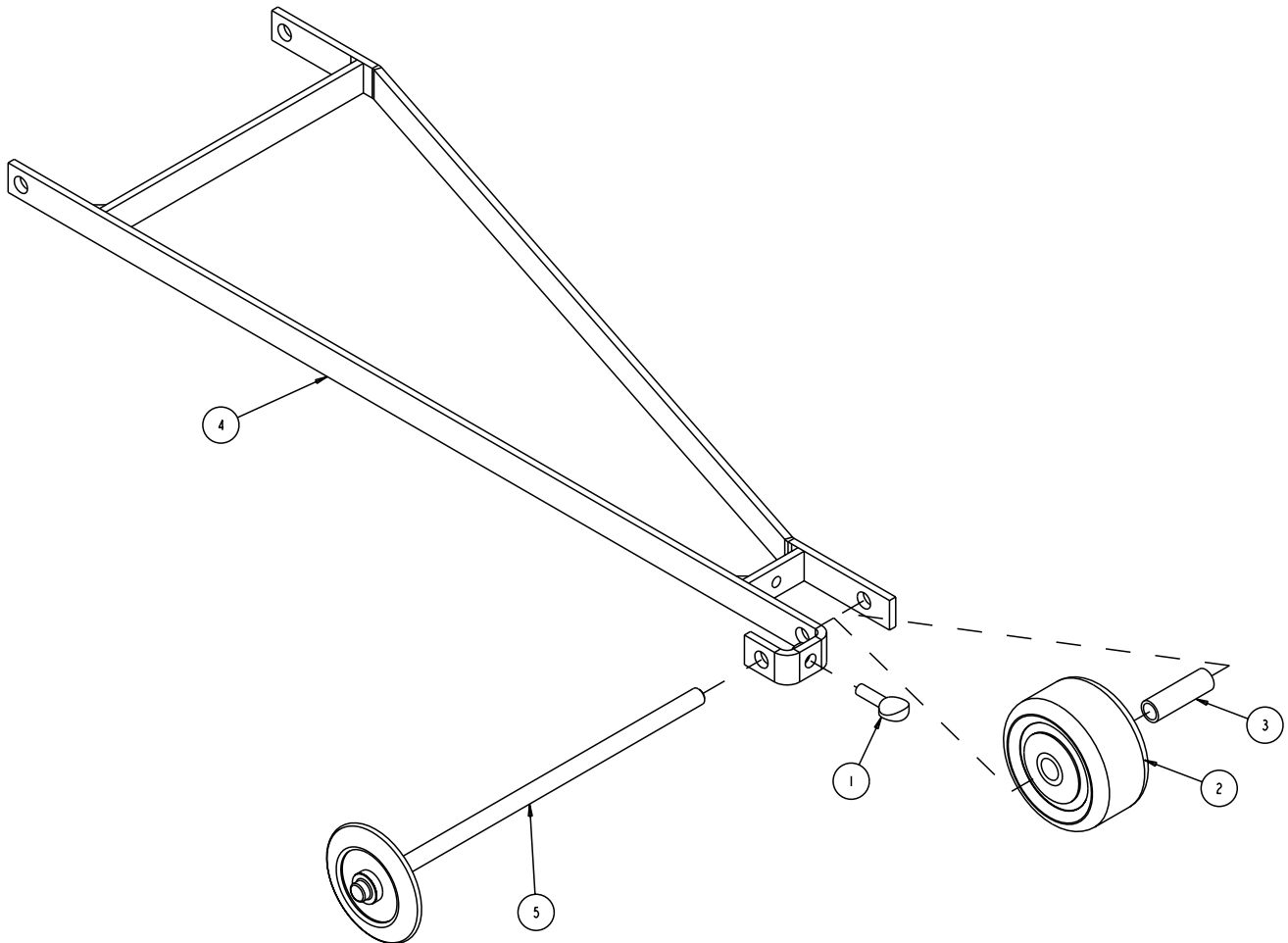
ITEM NO.	DESCRIPTION	PART OR IDENTIFYING NO.	QTY. REQ.
1	KEY, SQUARE, 1/4 X 1 - 3/4	150796	1
2	WASHER, FLAT, SAE, 3/8	150923	8
3	WASHER, 1/2 SAE FLAT	150924	3
4	WASHER, LOCK, SPLIT, 5/16	151747	4
5	WASHER, FLAT, SAE, 5/16	151754	4
6	NUT, 3/8 - 16 NYLOK HEX	152505	4
7	SCREW, HEX HD, 3/8 - 16 X 2	153485	4
8	WASHER, 1/2 SPLIT LOCK	153524	2
9	SCREW, 1/2 - 13 X 1 - 1/4 HEX HEAD CAP	153532	4
10	BOLT, HEX, TAP, 1/2 - 13 X 4	153854	1
11	MOUNT, ENGINE	154237	1
12	BUSHING, TPR - LOCK 1210 X 1 - 1/8"	154430	1
13	ELBOW, 1/8 MNPT X 1/4 BARB 90DEG	154652	1
14	PULLEY, 3A30B34 X 1210TB REV	155009	1
15	ASSY, OIL DRAIN, 14MM	157577-03	1
16	GUARD, INNER BELT	165608	1
17	SCREW, 5/16 - 24 X 3/4 HEX HEAD MACHINE	165617	4
18	ENGINE, HONDA GX630	169592	1
19	ASSY, 7" AIR CLEANER	165593	1
20	MUFFLER, HONDA 20HP 621600	169594	1
21	WASHER, 1/2 SAE FLAT	169958	1

FIGURE 6 - PARTS LIST: ENGINE, HONDA GX690 - P/N 170048



ITEM NO.	DESCRIPTION	PART OR IDENTIFYING NO.	QTY. REQ.
1	KEY, SQUARE, 1/4 X 1 - 3/4	150796	1
2	WASHER, FLAT, SAE, 3/8	150923	8
3	WASHER, 1/2 SAE FLAT	150924	3
4	WASHER, LOCK, SPLIT, 5/16	151747	4
5	WASHER, FLAT, SAE, 5/16	151754	4
6	NUT, 3/8 - 16 NYLOK HEX	152505	4
7	SCREW, HEX HD, 3/8 - 16 X 2	153485	4
8	WASHER, 1/2 SPLIT LOCK	153524	2
9	SCREW, 1/2 - 13 X 1 - 1/4 HEX HEAD CAP	153532	4
10	BOLT, HEX, TAP, 1/2 - 13 X 4	153854	1
11	MOUNT, ENGINE	154237	1
12	BUSHING, TPR - LOCK 1210 X 1 - 1/8"	154430	1
13	ELBOW, 1/8 MNPT X 1/4 BARB 90DEG	154652	1
14	PULLEY, 3A30B34 X 1210TB REV	155009	1
15	ASSY, OIL DRAIN, 14MM	157577-03	1
16	GUARD, INNER BELT	165608	1
17	SCREW, 5/16 - 24 X 3/4 HEX HEAD MACHINE	165617	4
18	ASSY, 7" AIR CLEANER	169593	1
19	MUFFLER, HONDA 20HP 621600	169594	1
20	ENGINE, HONDA GX690	169716	1
21	WASHER, 1/2 SAE FLAT	169958	1

FIGURE 7 - PARTS LIST: ASSY, POINTER - P/N 166465



ITEM NO.	DESCRIPTION	PART OR IDENTIFYING NO.	QTY. REQ.
1	SCREW, THUMB 1/4 - 20 X 3/4	150991	1
2	WHEEL, POINTER, 3"	155066	1
3	BUSHING, 3/8ID X 1 - 5/8L	155153	1
4	POINTER ARM, CONC SAW	156544	1
5	ASSY, POINTER WHEEL	165238	1

ORDERING INFORMATION

You may order MK Diamond products through your local MK Diamond distributor or, you may order direct from MK Diamond.

When ordering direct from MK Diamond, please have the following information ready before calling:

- The Model Number of the saw
- The Serial Number of the saw
- Where the saw was purchased and when
- The Part Number for the part(s) being ordered
- The Part Description for the part(s) being ordered

NOTE: There is a \$25.00 minimum order when ordering direct from MK Diamond. A \$6.00 charge will be added to orders having a net billing value under \$50.00. All purchases must be made using VISA, MasterCard or American Express.

All parts may be ordered by calling toll free to – 800 421-5830 or 310 539-5221 and asking for Customer Service. For technical questions, call – 800 474-5594.

RETURN MATERIALS POLICY

To expedite the service relative to the return of a product purchased through MK Diamond, please observe the following:

NOTE: When returning all items, they must have been purchased within the previous twelve (12) months.

- Have the Model Number of the saw
- Have the Serial Number of the saw
- Have the location of where the saw was purchased
- Have the date when the saw was purchased
- Contact Customer Service for approval to return the item(s)
- Obtain a Returned Goods Number (RGA) authorizing the return
- Follow the packaging instructions in the following section
- Ensure your item(s) are prepaid to the destination

For returned items, call toll free to – 800 421-5830 or 310 539-5221 and ask for Customer Service. For technical questions, call – 800 474-5594 or 310 257-2845.

PACKAGING INSTRUCTIONS

- Remove the Cutting Head and Support Angle Assembly
- Dry the saw before shipping
- When packing, include the following: Saw, Diamond Blade, and Blade Guard Assembly and Adjustable Cutting Guide (Other Accessories are not required)
- Package the unit in its original container or one of comparable size (do not ship the unit partially exposed)
- Ensure all parts are secured in the packaging to prevent moving

AUTHORIZED SERVICE CENTERS

For quicker repair time, you may contact MK Diamond Customer Service, toll free, at 800 421-5830 or 310 539-5221 for the Authorized Service Center closest to you or visit our web site at www.mkdiamond.com. For technical questions, call – 800 474-5594.

CONTACT:

Please contact MK Diamond Products, Inc. Customer Service Department with any questions you might have regarding distributors, parts or service.

Telephone: **(800) 421-5830**

Fax: **(310) 539-5158**

E-mail: **Customer_Service@MKDiamond.com**

Customer Service Hours: **Monday through Friday, 6AM-4PM PST**

**MK Diamond Products, Inc.
1315 Storm Parkway
Torrance, CA 90501**

MK DIAMOND PRODUCTS, INC. LIMITED WARRANTY

MK DIAMOND PRODUCTS, INC. will guarantee every machine they build, to be free from defects in material and workmanship for (1) one year from date of purchase. The obligation of MK DIAMOND PRODUCTS, INC. under this warranty is limited to the repair or replacement of any parts which, under normal use, prove to be defective in material or workmanship. The parts involved or the unit in question should be returned to MK DIAMOND PRODUCTS, INC. or to a point designated by us, transportation prepaid.

This warranty does not obligate us to bear the cost of labor or transportation charges in connection with replacement or repair of defective parts. Likewise, it shall NOT apply to any unit which has been subjected to misuse, neglect or accident. This warranty does NOT apply to any machine which has been repaired or altered outside our factory.

This warranty does NOT obligate MK DIAMOND PRODUCTS, INC., with respect to items not of our manufacture, such as engines, motors, hydraulics, etc., which are subject to their own guarantees and warranties.

We shall in no event be liable for consequential damages or contingent liabilities arising out of failure of any equipment or parts to operate properly.

© COPYRIGHT 2012, MK DIAMOND PRODUCTS, INC. ALL RIGHTS RESERVED.

The MK Diamond logo is a registered trademark of MK Diamond Products, Inc. and may not be used, reproduced, or altered without written permission. All other trademarks are the property of their respective owners and used with permission.

MK Diamond may have patents, patent applications, trade marks, copyrights of other intellectual property right covering this product in this document.

This manual MUST accompany the equipment at all times. This manual is considered a permanent part of the equipment and should remain with the unit if resold.

The information and specifications included in this publication were in effect at the time of approval for printing.

MK-20 SERIES CONCRETE SAW
OWNER'S MANUAL, OPERATING INSTRUCTIONS, &
PARTS LIST



MK Diamond Products, Inc.

MK Diamond Products, Inc.
1315 Storm Parkway
Torrance, CA 90501

Toll-Free: (800) 421-5830
Phone: (310) 539-5221
Fax: (310) 539-5158
www.mkdiamond.com