

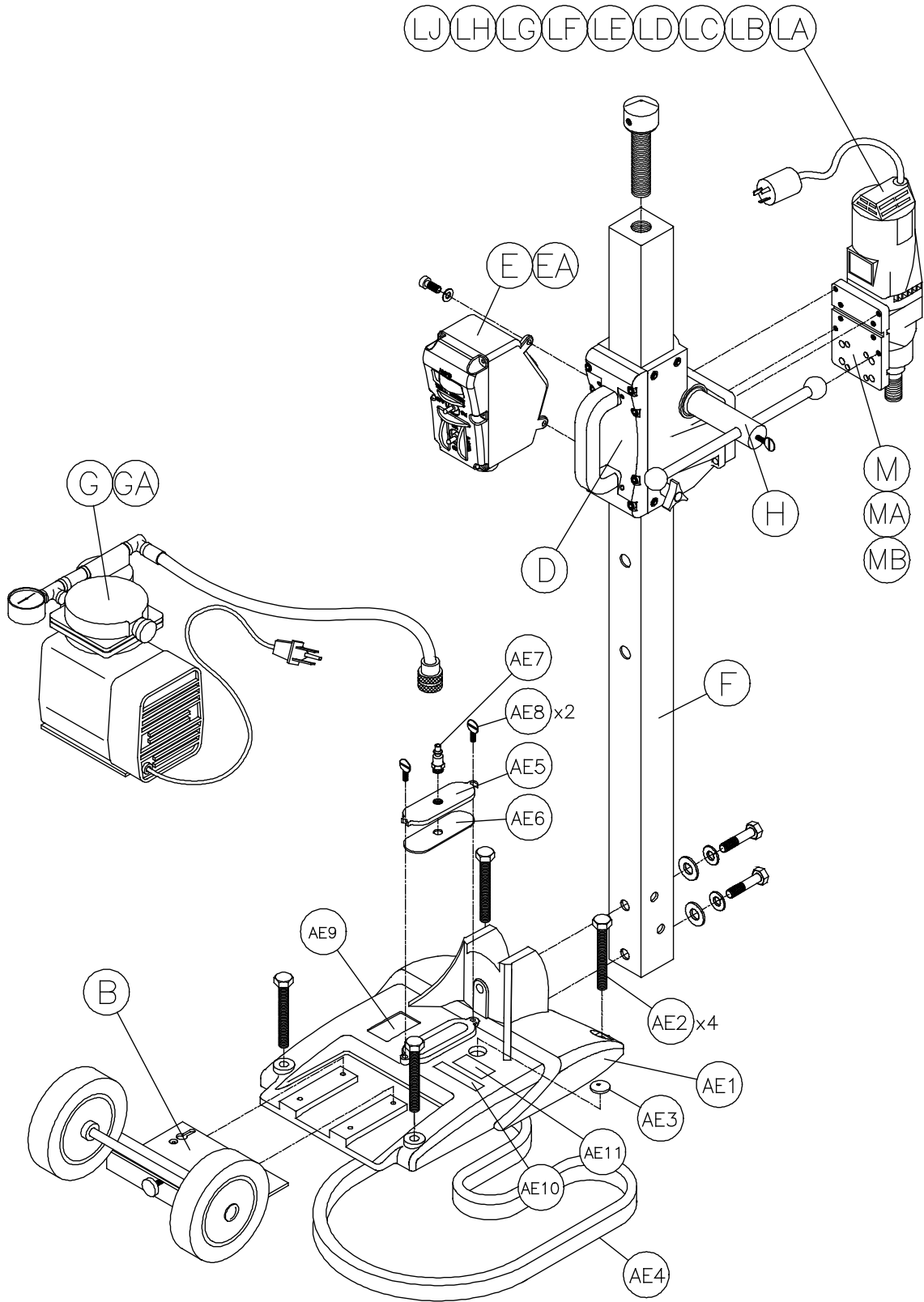
MK-MANTA III OWNER'S MANUAL PARTS LIST & OPERATING INSTRUCTIONS

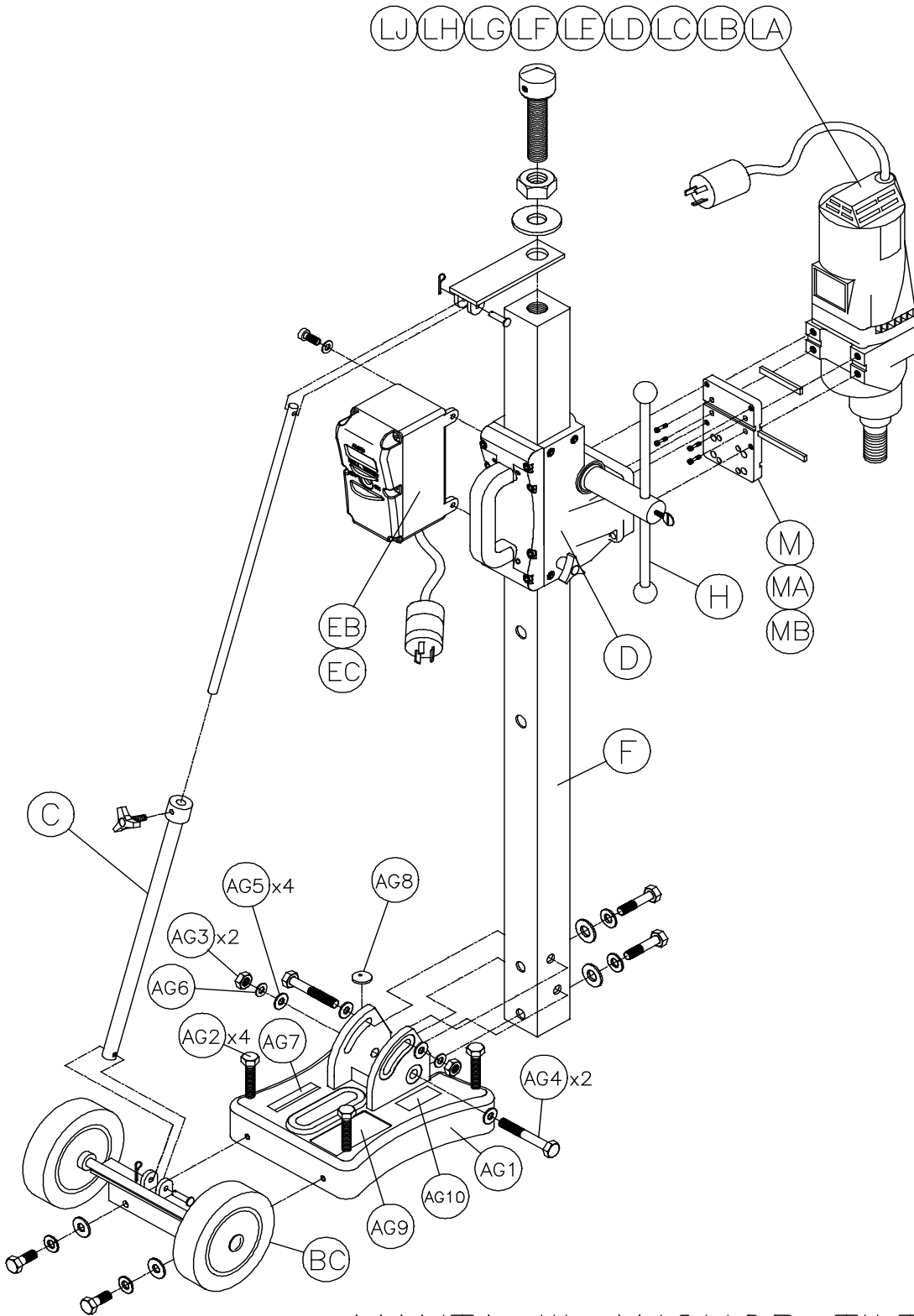


Revision 202	08.2012
Manual Part# 161117	

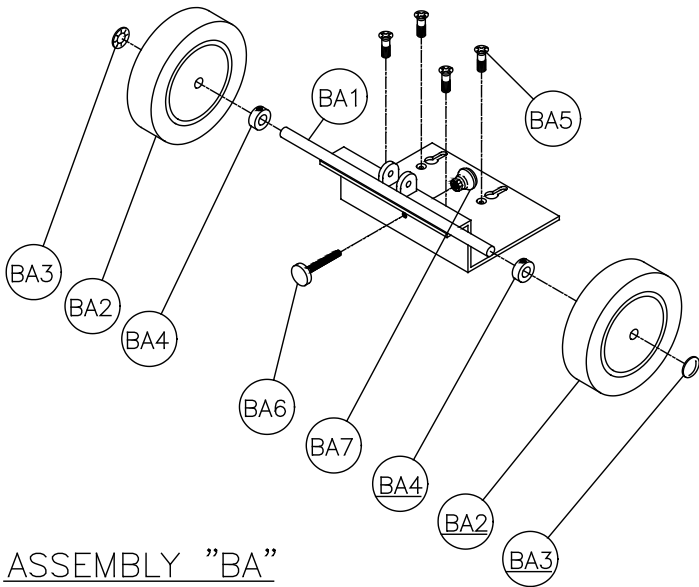
Caution: Read all safety and operating instructions before using this equipment. This parts list **MUST** accompany the equipment at all times.

MANTA III COMBO

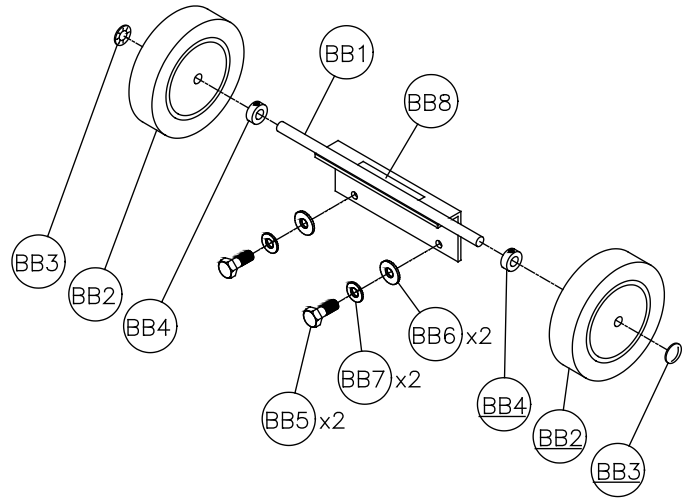




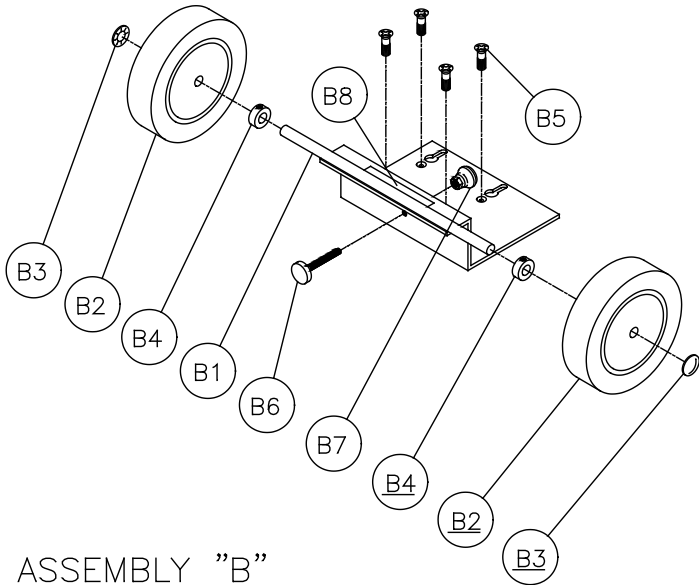
MANTA III ANCHOR TILT



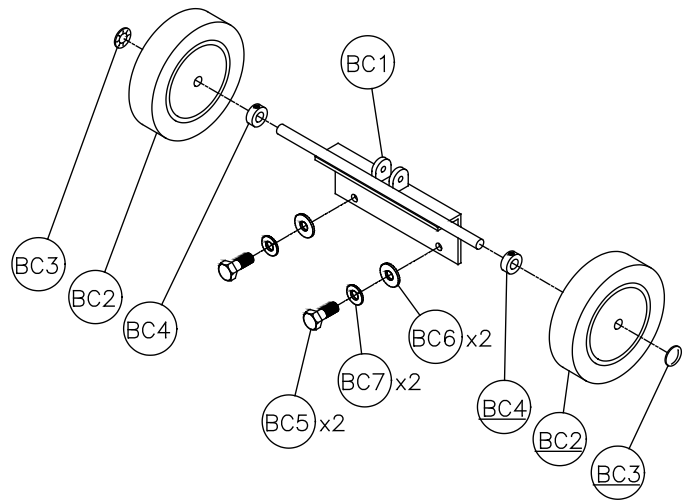
ASSEMBLY "BA"



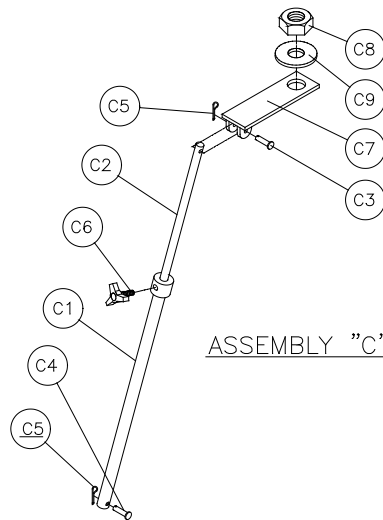
ASSEMBLY "BB"



ASSEMBLY "B"

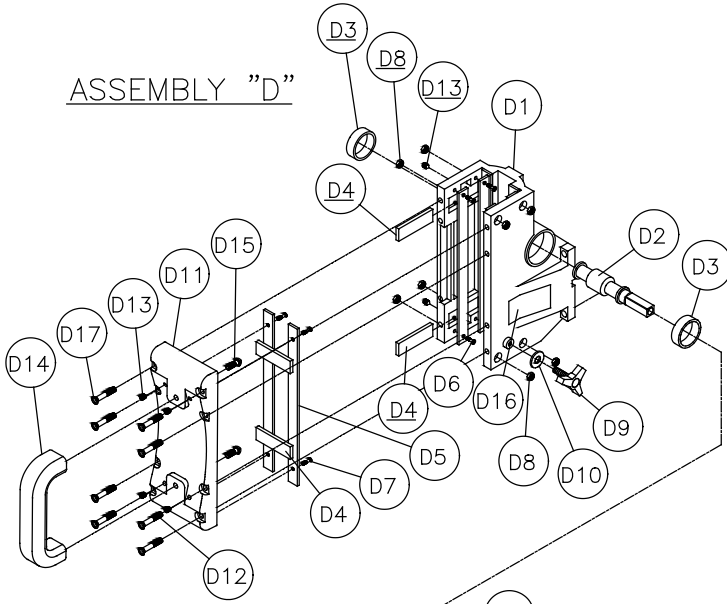


ASSEMBLY "BC"

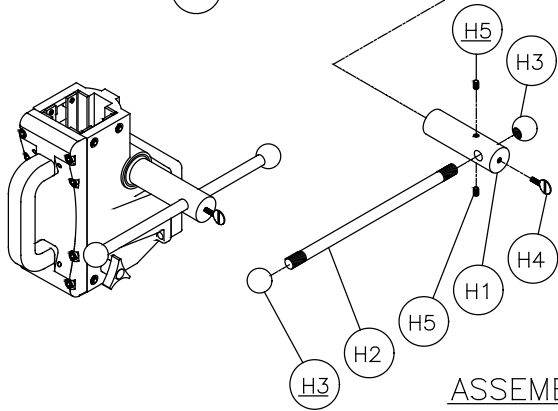


ASSEMBLY "C"

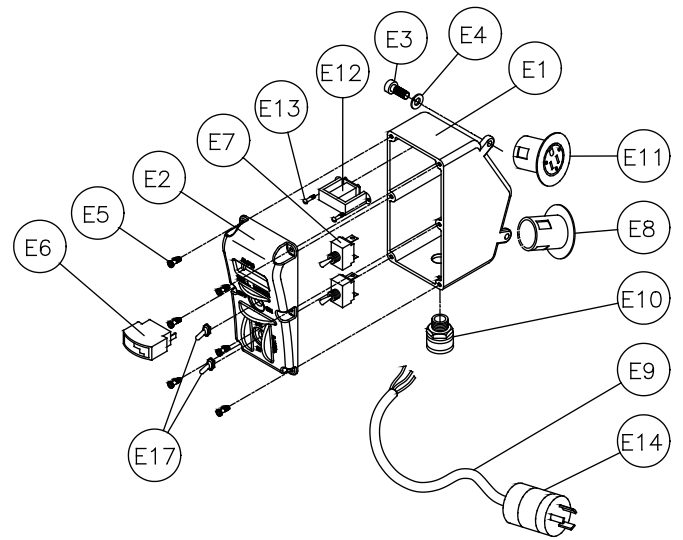
ASSEMBLY "D"



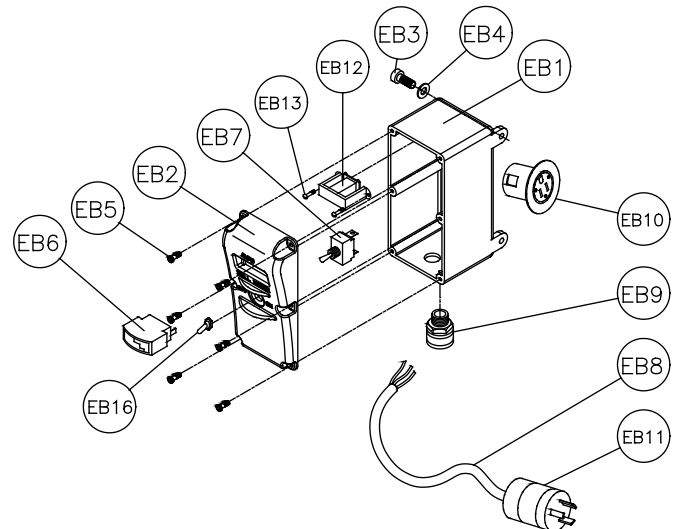
ASSEMBLY "H"

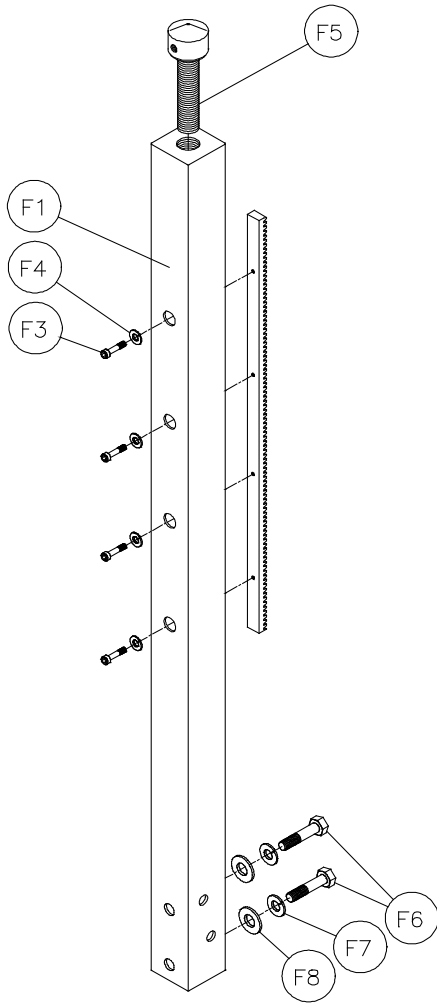


ASSEMBLY "E & EA"

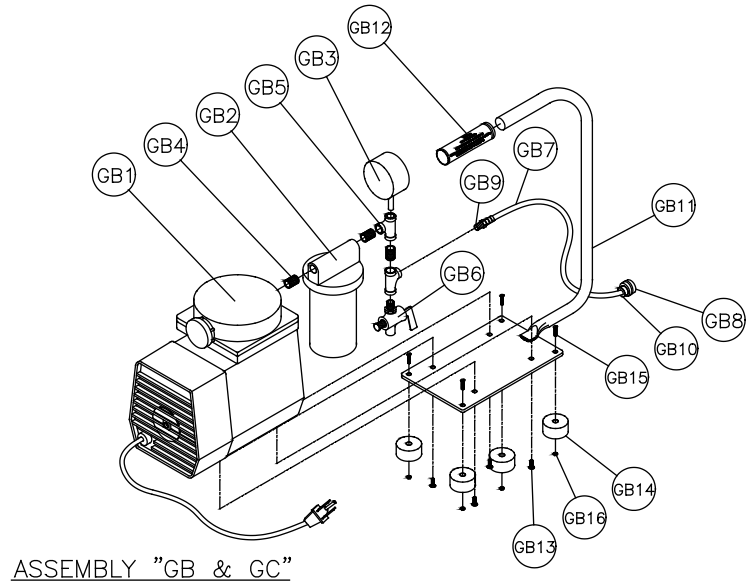


ASSEMBLY "EB & EC"

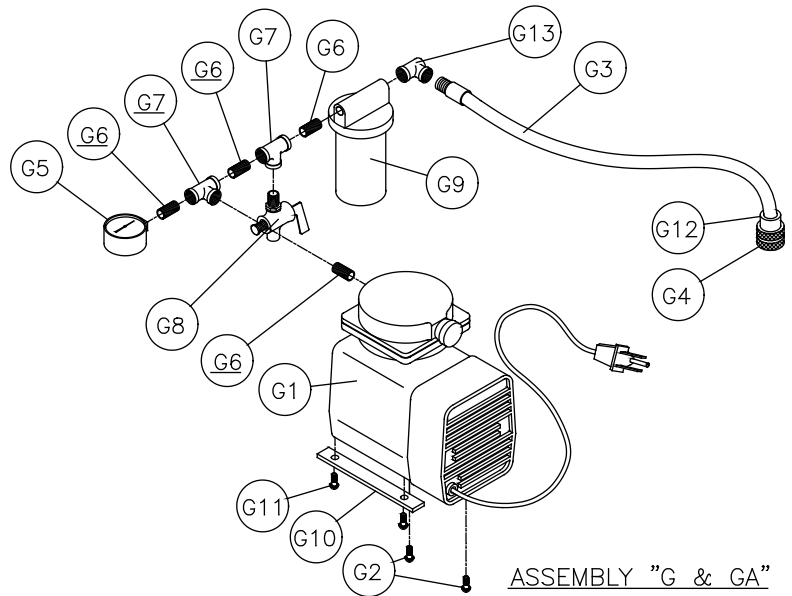




ASSEMBLY "F"

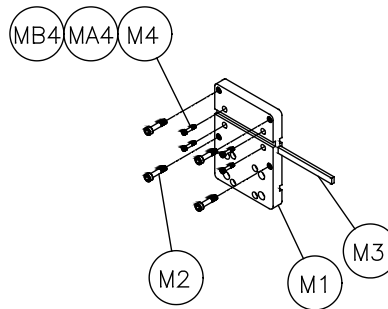
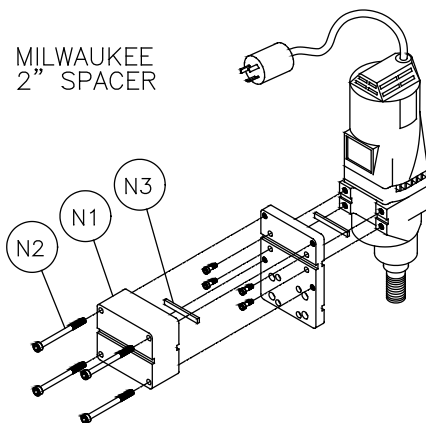


ASSEMBLY "GB & GC"



ASSEMBLY "G & GA"

MILWAUKEE
2" SPACER



ASSEMBLY "M, MA & MB"

Item	Description	Qty	Part #
AE	Assembly, M3 Base, Combination	1	n/a
AE1	Base, M3 Combination	1	157427
AE2	Screw, ½-13 x 3 ½ Hex Hd. Cap, Full Thread	4	158284
AE3	Level, Circular Bubble	1	157429
AE4	Gasket, Neoprene size 1" x ½ x 47.8"	3.98'	154543
AE5	Plate, Air Seal	1	157430
AE6	Gasket, 1/8" Neoprene Rubber	1	157431
AE7	Fitting, ¼ MNPT x 3/8 Barb	1	154659
AE8	Screw, Spade Hd. Thumb ¼-20 x ¾ w/ Shoulder	2	157432
AE9	Label, Manta Serial Tag	1	157730
AE10	Label, Caution, Safety	1	155576
AE11	Label, MK, Adhesive	1	157914
AF	Assembly, M3 Base, Combination Tilt	1	n/a
AF1	Base, M3 Combination Tilt	1	158393
AF2	Screw, ½-13 x 3 ½ Hex Hd. Cap, Full Thread	4	158284
AF3	Level, Circular Bubble	1	157429
AF4	Gasket, Neoprene size 1" x ½ x 47.8"	3.98'	154543
AF5	Plate, Air Seal	1	157430
AF6	Gasket, 1/8" Neoprene Rubber	1	157431
AF7	Fitting, ¼ MNPT x 3/8 Barb	1	154659
AF8	Screw, Spade Hd. Thumb ¼-20 x ¾ w/ Shoulder	2	157432
AF9	Label, Manta Serial Tag	1	157730
AF10	Label, Caution, Safety	1	155576
AF11	Label, MK, Adhesive	1	157914
AF12	Screw, ½-13 x 4-½ Hex Hd. Cap	1	158397
AF13	Washer, ½ SAE Flat	2	150924
AF14	Washer, ½ Split Lock	1	153524
AF15	Nut ½-13 Hex	1	151282
AG	Assembly, M3 Base, Anchor Tilt	1	n/a
AG1	Base, M3 Anchor, Tilt	1	157413
AG2	Screw, ½-13 x 3 ½ Hex Hd. Cap, Full Thread	4	158284
AG3	Nut, ½-13 Hex Hd.	2	151282
AG4	Screw, ½-13 x 4 ½ Hex Hd. Cap	2	158397
AG5	Washer, ½ SAE Flat	4	150924
AG6	Washer, ½ Split Lock	2	153524
AG7	Label, Caution, Safety	1	155576
AG8	Level, Circular Bubble	1	157429
AG9	Label, Manta Serial Tag	1	157730
AG10	Label, MK, Adhesive	1	157914
AG11	Label, For Information on Service	1	155038
B	Assembly, M3 Wheel Bracket, Combo		n/a
B1	Bracket, Wheel, Combo	1	158392
B2	Wheel 6" x 1 ½ x ½ axle	2	157434
B3	Cap, Push ½" Stainless Steel	2	157435
B4	Collar, ½ I.D. x 1" O.D. x 7/16	2	157518
B5	Screw, ¼-20 x ¾ Flat Head Socket	4	154657
B6	Knob, Knurled Head ¼-20 x 2 ½	1	157436
B7	Pad, Toggle ¼-20	1	157437
B8	Label, Manta 1-1/4 x 5 1/8	1	155388
BA	Assembly, M3 Wheel Bracket, Tilt Combo		n/a
BA1	Bracket, Wheel, M3 Tilt Combo	1	158321
BA2	Wheel 6" x 1 ½ x ½ axle	2	157434

Item	Description	Qty	Part #
BA3	Cap, Push ½" Stainless Steel	2	157435
BA4	Collar, ½ I.D. x 1" O.D. x 7/16	2	157518
BA5	Screw, ¼-20 x ¾ Flat Head Socket	4	154657
BA6	Knob, Knurled Head ¼-20 x 2 ½	1	157436
BA7	Pad, Toggle ¼-20	1	157437
C	Assembly, Telescoping Support		n/a
C1	Tube, Telescoping Support	1	158340
C2	Rod, Telescoping Support	1	158341
C3	Clovis Pin Ø1/4 x 1 ¼	1	158452
C4	Clovis Pin Ø1/4 x 1 5/8	1	158453
C5	Pin, Cotter 1/16 x 5/8	2	158451
C6	Knob, Tri Plastic, 5/16-18 x ¾	1	158456
C7	Bracket, Telescoping Rod Support	1	158342
C8	Nut, M22 x 1.5	1	158455
C9	Washer, M22 Flat	1	158454
D	Assembly, Carriage 2 ½"	1	n/a
D1	Body, Carriage	1	155757
D2	Shaft, Gear, Short	1	158348
D3	Bearing	2	137711
D4	Plate, Adjustment	3	157317
D5	Slide, Carriage	8	157318
D6	Screw, 6-32 x 1/2 Flat Head Phillips Machine	8	154448
D7	Screw, 6-32 x 3/8 Flat Head Phillips Machine	8	157521
D8	Nut, 6-32 Nylok Hex	8	157519
D9	Knob, Davies ¼-20 x ¾	1	151681
D10	Washer, ¼ SAE Flat	1	151915
D11	Back, Carriage	1	157438
D12	Screw, 1/4-20 X 1 Socket Head Cap	4	151049
D13	Screw, ¼-20 x 5/16 Socket Head Set	6	154226
D14	Handle, Carriage	1	157440
D15	Screw, 1/4-20 X ¾ Pan Head Phillips	2	157523
D16	Label, MK USA	2	154334
D17	Screw, 1/4-20 X 1 ¼ Socket Head Cap	4	159336
E	Assembly, Control Box, Fixed, Dual Switch 120V	1	158428
E1	Box, Fixed Dual Switch Control	1	158274
E2	Cover, Fixed Dual Switch Control Box	1	158276
E3	Screw, ¼-20 x ¾ Socket Head Cap	2	152587
E4	Washer, ¼ Split Lock	2	152591
E5	Screw, 10-24 x 5/8 Self Tapping	6	153681
E6	Ammeter 120V	1	154489
E7	Switch, 30A Toggle	2	154491
E8	Receptacle, Flanged 15A / 125V	1	154473
E9	Cord, Power SOWA 12/3 Yellow	3'	154494
E10	Connector, Cord ½	1	151307
E11	Receptacle, Flanged Twist-lock 20A / 125V	1	157375
E12	Transformer, Current 120 V AC	1	154490
E13	Screw, 6-32 x ½ Pan Head	2	153459
E14	Plug, Twist-lock, 125V / 20A	1	154556
E15	Wire Harness (not shown)	1	154715
E17	Cover, Toggle Switch	2	154301
EB	Assembly, Control Box, Single Switch 120V	1	158430
EB1	Box, Single Switch Control	1	158385

Item	Description	Qty	Part #
EB2	Cover, Single Switch Control Box	1	158387
EB3	Screw, ¼-20 x ¾ Socket Head Cap	2	152587
EB4	Washer, ¼ Split Lock	2	152591
EB5	Screw, 10-24 x 5/8 Self Tapping	6	153681
EB6	Ammeter 120V	1	154489
EB7	Switch, 30A Toggle	1	154491
EB8	Cord, Power SOWA 12/3 Yellow	3'	154494
EB9	Connector, Cord ½	1	151307
EB10	Receptacle, Flanged Twist-lock 20A / 125V	1	157375
EB11	Plug, Twist-lock, 125V / 20A	1	154556
EB12	Transformer, Current 120 V AC	1	154490
EB13	Screw, 6-32 x ½ Pan Head	2	153459
EB14	Wire Harness (not shown)	1	154715
EB16	Cover, Toggle Switch	1	154301
F1	Assembly, Column		n/a
F1	Manta, Core Drill Column (w/Gear Rack)	1	158425-2
F3	Screw, 10-32 X ½ Socket Hd. Cap	4	157525
F4	Washer, #10 Split Lock	4	153684
F5	Screw, M22 x 1.25 Jack	1	157445
F6	Screw, 1/2-13 X 3 ½ Hex Head Cap	2	154574
F7	Washer, 1/2 Split Lock	2	153524
F8	Washer, 1/2 SAE Flat	2	150924
G	Assembly, M3 Vacuum Pump 120V	1	158530
G1	Pump, Vacuum 120V	1	154475
G2	Screw, 10-32 X ¾ Slotted Truss Head	2	157526
G3	Hose, 3/8 I.D., Air	12"	154656
G4	Fitting, ¼ FNPT	1	154617
G5	Gauge, Vacuum	1	154477
G6	Nipple, ¼ NPT X Close Galvanized	4	152598
G7	Tee, 1/4 NPT Galvanized	2	154497
G8	Valve, ¼ NPT X Petcock	1	154488
G9	Filter, Water	1	154476
G10	Bracket, Pump Hold Down	1	157446
G11	Screw, ¼-20 x ½ Phil. Flat Head	2	157527
G12	Ferrel, Crimp	2	154660
G13	Fitting, 90° ¼ Street	1	154615
GB	Assembly, Vacuum Pump w/ Handle 120V	1	154741
GB1	Pump, Vacuum 120v	1	154475
GB2	Filter, Water	1	154476
GB3	Gauge, Vacuum	1	154477
GB4	Nipple, 1/4 MNPT X Close	3	152598
GB5	Fitting, 1/4 FNPT X 1/4 FNPT X 1/4 FNPT Tee	2	154497
GB6	Valve, 1/4" Pettcock	1	154488
GB7	Hose, 3/8 I.D. Air	6'	154656
GB8	Coupler Body, 1/4 FNPT	1	154617
GB9	Fitting, 1/4 MNPT X 3/8 BARB	2	154659
GB10	Ferrell, Crimp	2	154660
GB11	Base, Vacuum Pump	1	154495
GB12	Handgrip, 3/4 X 4 9/16 Black	1	139949
GB13	Screw, 10-32 X 1/2 Phillips Pan Head Cap	4	151052
GB14	Foot, Rubber	4	154496

Item	Description	Qty	Part #
GB15	Screw, 1/4-20 X 3/4 Flat Head Phillips Cap	4	154657
GB16	Nut, 1/4-20 Hex	4	151893
H	Assembly, Handle, Slip	1	n/a
H1	Hub, Slip Handle	1	157321
H2	Spoke, Slip Handle	1	157322
H3	Knob, Ball 1/2-20 Female	2	154486
H4	Screw, 1/4-20 X 3/4 Thumb	1	157432
H5	Screw, 1/4-20 X 1/4 Socket Head Set	2	157528
K	Assembly, Accessory Pack (not shown)	1	n/a
K1	Carton, Accessory Pack	1	157323
K2	Owner's Manual, MK-Manta 3 Series Core Drill	1	161117
K3	Card, Warranty	1	155859
K4	MK Sell Sheet	1	155333
LA	Assembly, Motor, Milwaukee 4094	1	n/a
LA1	Motor, Milwaukee 4094, Shear Pin, 20A/120V	1	154633
LB	Assembly, Motor, Milwaukee 4096	1	n/a
LB1	Motor, Milwaukee 4096, Slip Clutch, 20A/120V	1	155540
LD	Assembly, Motor, Milwaukee 4004	1	n/a
LD1	Motor, Milwaukee 4004, Slip Clutch, 20A/120V	1	159263
LE	Assembly, Motor, Milwaukee 4097-20	1	n/a
LE1	Motor, Milwaukee 4097-20, Slip Clutch, 15A/120V	1	159264
LF	Assembly, Motor, Milwaukee 4090	1	n/a
LF1	Motor, Milwaukee 4090, Shear Pin, 15A/120V	1	155976
LJ	Assembly, Motor, Eibenstock EBM 300/3 P	1	n/a
LJ1	Motor, Eibenstock EBM 300/3/P, Slip Clutch, 20A/120V	1	158754
M	Assembly, 3/4" Motor Mount Plate, Hybrid, Milwaukee	1	n/a
M1	Motor Mount Plate, Hybrid	1	158412
M2	Screw, 3/8-16 x 1 1/4, Socket Hd. Cap	4	157529
M3	Key, 3/8 x 3/8 x 5	1	157520
M4	Screw, 1/4-20 x 1.0, Socket Hd. Cap	4	151049
MA	Assembly, 3/4" Motor Mount Plate, Hybrid, CB748	1	n/a
MA1	Motor Mount Plate, Hybrid	1	158412
MA2	Screw, 3/8-16 x 1 1/4, Socket Hd. Cap	4	157529
MA3	Key, 3/8 x 3/8 x 5	1	157520
MA4	Screw, 1/4-28 x 1 1/2, Socket Hd. Cap	4	154684
MB	Assembly, 3/4" Motor Mount Plate, Hybrid, Ebinstock	1	n/a
MB1	Motor Mount Plate, Hybrid	1	158412
MB2	Screw, 3/8-16 x 1 1/4, Socket Hd. Cap	4	157529
MB3	Key, 3/8 x 3/8 x 5	1	157520
MB4	Screw, M8 x 1.25 x 25mm, Socket Hd. Cap	4	157530
N	Assembly, 2", Spacer Block Milwaukee (optional)	1	n/a
N	Spacer Block, 2" Milwaukee	1	154721
N2	Screw, 3/8-16 x 3 1/4, Socket Hd. Cap	4	161118
N3	Key, 3/8 x 3/8 x 5	1	157520

ORDERING INFORMATION

You may order MK Diamond products through your local MK Diamond distributor or, you may order direct from MK Diamond.

When ordering direct from MK Diamond, please have the following information ready before calling:

- The Model Number of the saw
- The Serial Number of the saw
- Where the saw was purchased and when
- The Part Number for the part(s) being ordered
- The Part Description for the part(s) being ordered

NOTE: There is a \$25.00 minimum order when ordering direct from MK Diamond. A \$5.00 charge will be added to orders having a net billing value under \$50.00. All purchases must be made using VISA, MasterCard or American Express.

All parts may be ordered by calling toll free to – 800 421-5830 or 310 539-5221 and asking for Customer Service. For technical questions, call – 800 474-5594.

RETURN MATERIALS POLICY

To expedite the service relative to the return of a product purchased through MK Diamond, please observe the following:

NOTE: When returning all items, they must have been purchased within the previous twelve (12) months.

- Have the Model Number of the saw
- Have the Serial Number of the saw
- Have the location of where the saw was purchased
- Have the date when the saw was purchased
- Contact Customer Service for approval to return the item(s)
- Obtain a Returned Goods Number (RGA) authorizing the return
- Follow the packaging instructions in the following section
- Ensure your item(s) are prepaid to the destination

For returned items, call toll free to – 800 421-5830 or 310 539-5221 and ask for Customer Service. For technical questions, call – 800 474-5594 or 310 257-2845.

PACKAGING INSTRUCTIONS

- Remove the motor and Support Assembly
- Dry the drill before shipping
- When packing, include the following: Core Drill, Vacuum Pump and Accessory Pack
- Package the unit in its original container or one of comparable size (do not ship the unit partially exposed)
- Ensure all parts are secured in the packaging to prevent moving

AUTHORIZED SERVICE CENTERS

For quicker repair time, you may contact MK Diamond Customer Service, toll free, at 800 421-5830 or 310 539-5221 for the Authorized Service Center closest to you or visit our web site at www.mkdiamond.com. For technical questions, call – 800 474-5594.

CONTACT

Please contact MK Diamond Products, Inc. Customer Service Department with any questions you might have regarding distributors, parts or service.

Telephone: **(800) 421-5830**

Fax: **(310) 539-5158**

E-mail: **Customer_Service@MKDiamond.com**

Customer Service Hours: **Monday through Friday, 6AM-4PM PST**

MK Diamond Products, Inc.

1315 Storm Parkway

Torrance, CA 90501

MK DIAMOND PRODUCTS, INC. LIMITED WARRANTY

MK DIAMOND PRODUCTS, INC. will guarantee every machine they build, to be free from defects in material and workmanship for (1) one year from date of purchase. The obligation of MK DIAMOND PRODUCTS, INC. under this warranty is limited to the repair or replacement of any parts which, under normal use, prove to be defective in material or workmanship. The parts involved or the unit in question should be returned to MK DIAMOND PRODUCTS, INC. or to a point designated by us, transportation prepaid.

This warranty does not obligate us to bear the cost of labor or transportation charges in connection with replacement or repair of defective parts. Likewise, it shall NOT apply to any unit which has been subjected to misuse, neglect or accident. This warranty does NOT apply to any machine which has been repaired or altered outside our factory.

This warranty does NOT obligate MK DIAMOND PRODUCTS, INC., with respect to items not of our manufacture, such as engines, motors, hydraulics, etc., which are subject to their own guarantees and warranties.

We shall in no event be liable for consequential damages or contingent liabilities arising out of failure of any equipment or parts to operate properly.

© COPYRIGHT 2012, MK DIAMOND PRODUCTS, INC. ALL RIGHTS RESERVED.

The MK Diamond logo is a registered trademark of MK Diamond Products, Inc. and may not be used, reproduced, or altered without written permission. All other trademarks are the property of their respective owners and used with permission.

MK Diamond may have patents, patent applications, trade marks, copyrights of other intellectual property right covering this product in this document.

This manual MUST accompany the equipment at all times. This manual is considered a permanent part of the equipment and should remain with the unit if resold.

The information and specifications included in this publication were in effect at the time of approval for printing.

MK-MANTA CORE DRILL III
OWNER'S MANUAL & OPERATING INSTRUCTIONS



MK Diamond Products, Inc.

MK Diamond Products, Inc.
1315 Storm Parkway
Torrance, CA 90501

Toll-Free: (800) 421-5830
Phone: (310) 539-5221
Fax: (310) 539-5158
www.mkdiamond.com