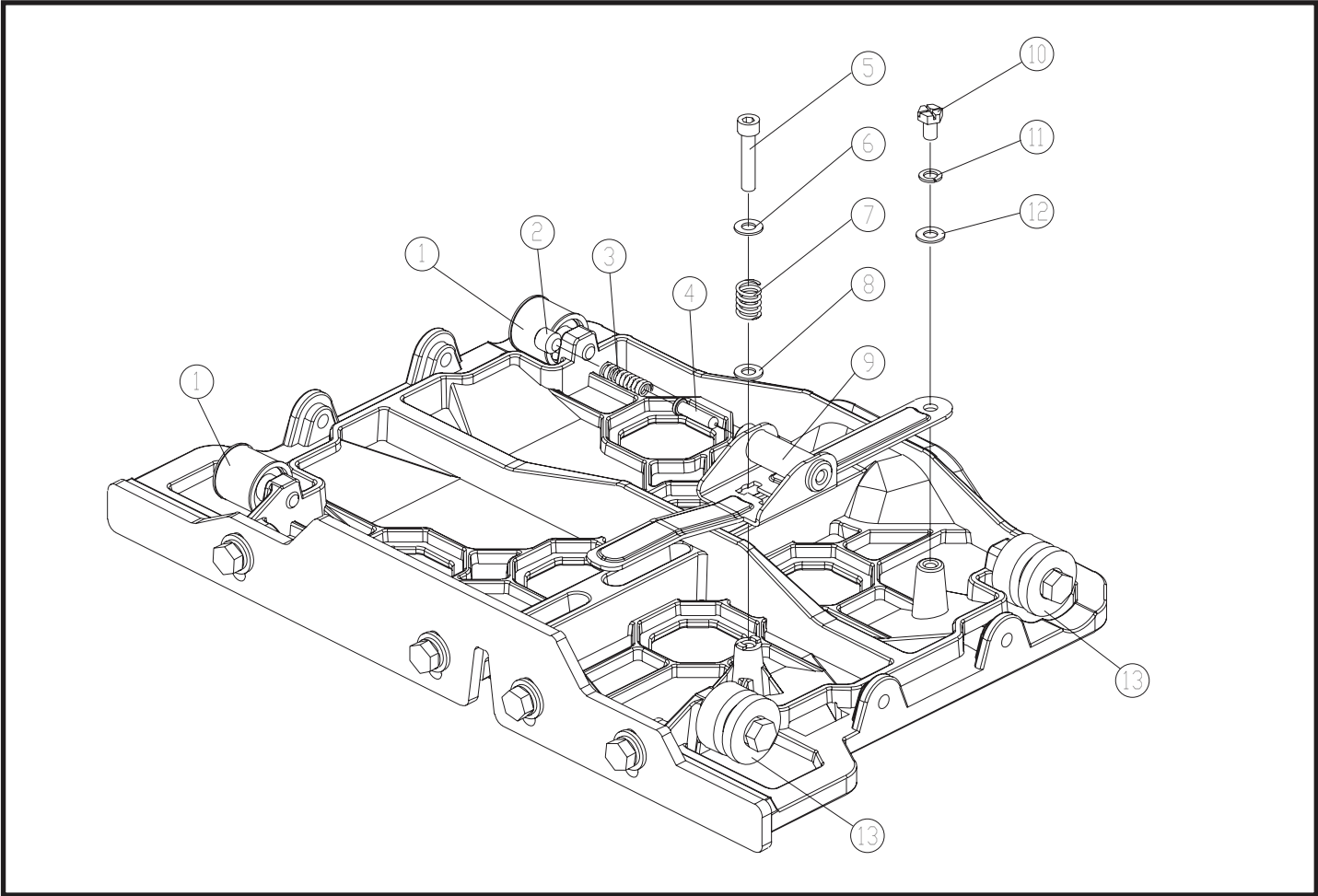
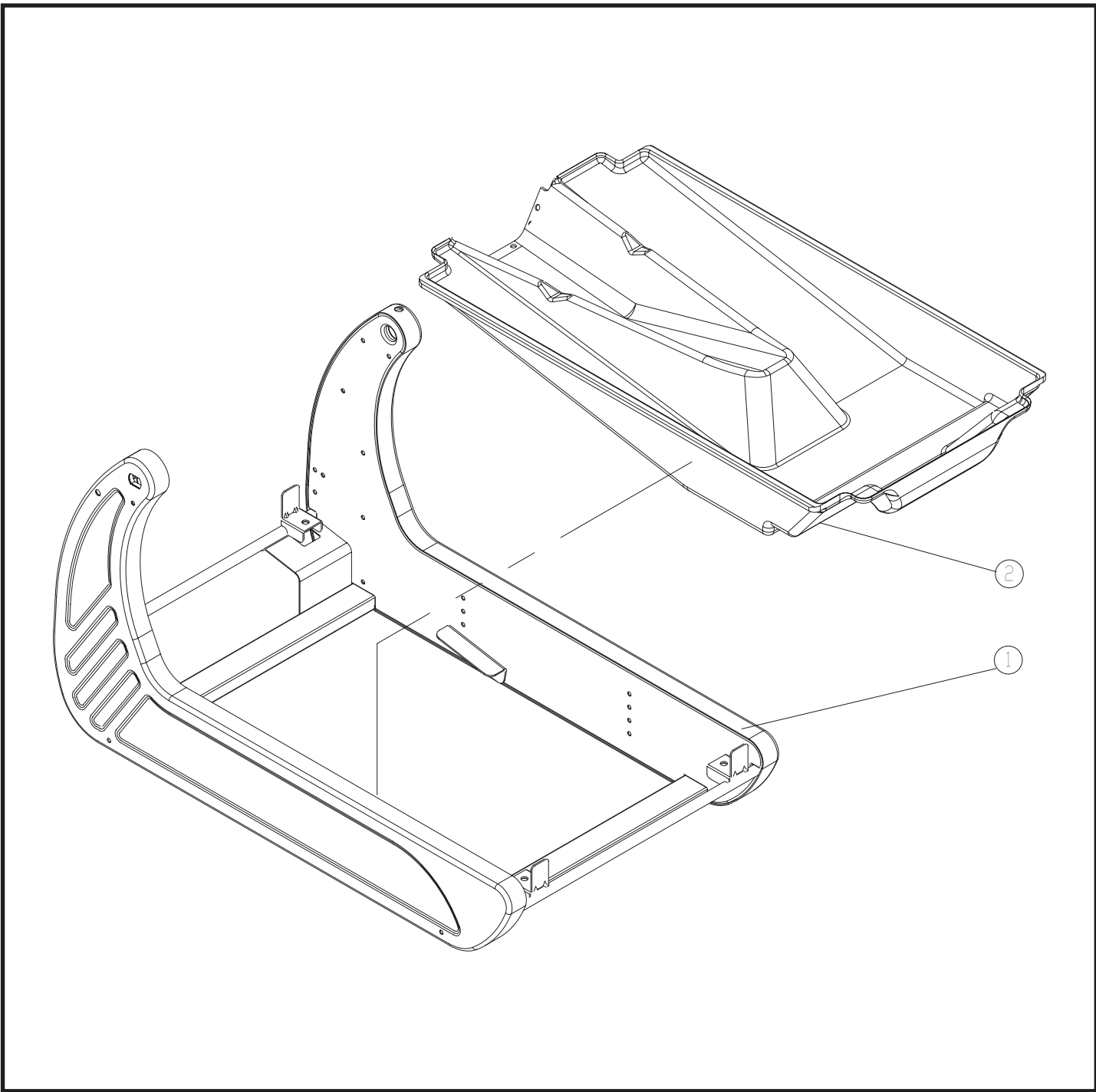


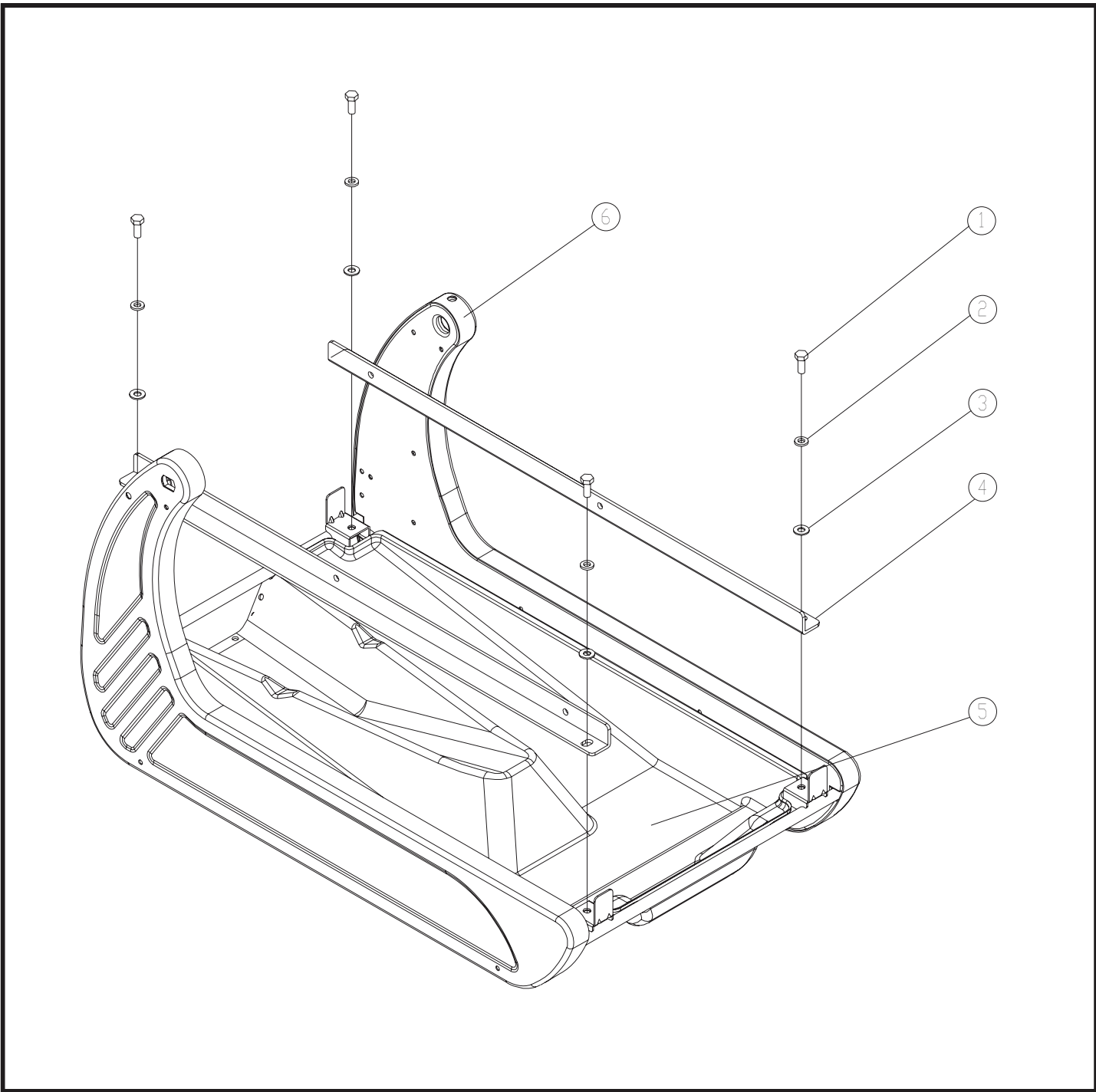
Conveyor Cart Assembly (part number: 235002) Figure - 1



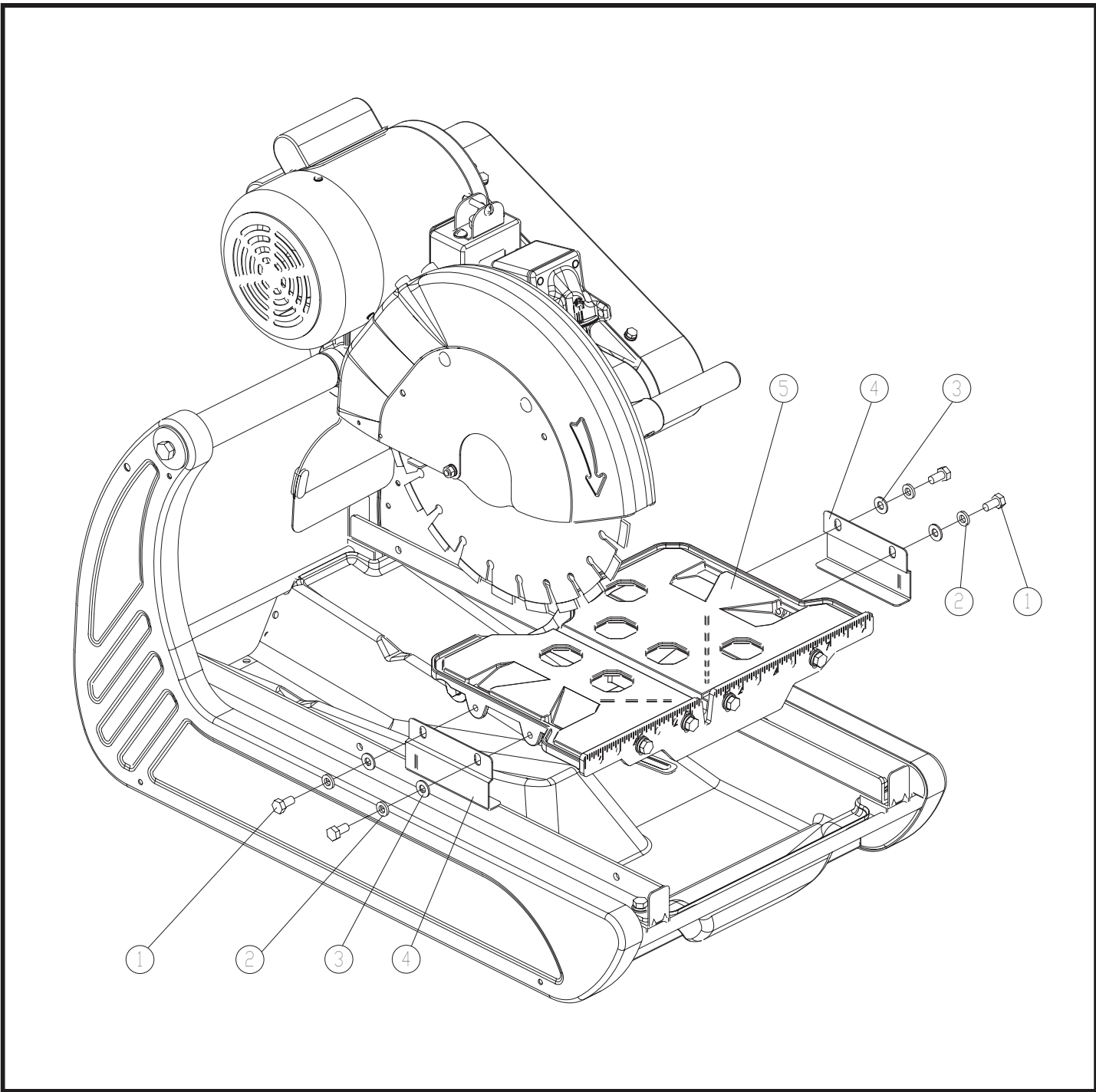
Conveyor Cart Assembly Figure - 2



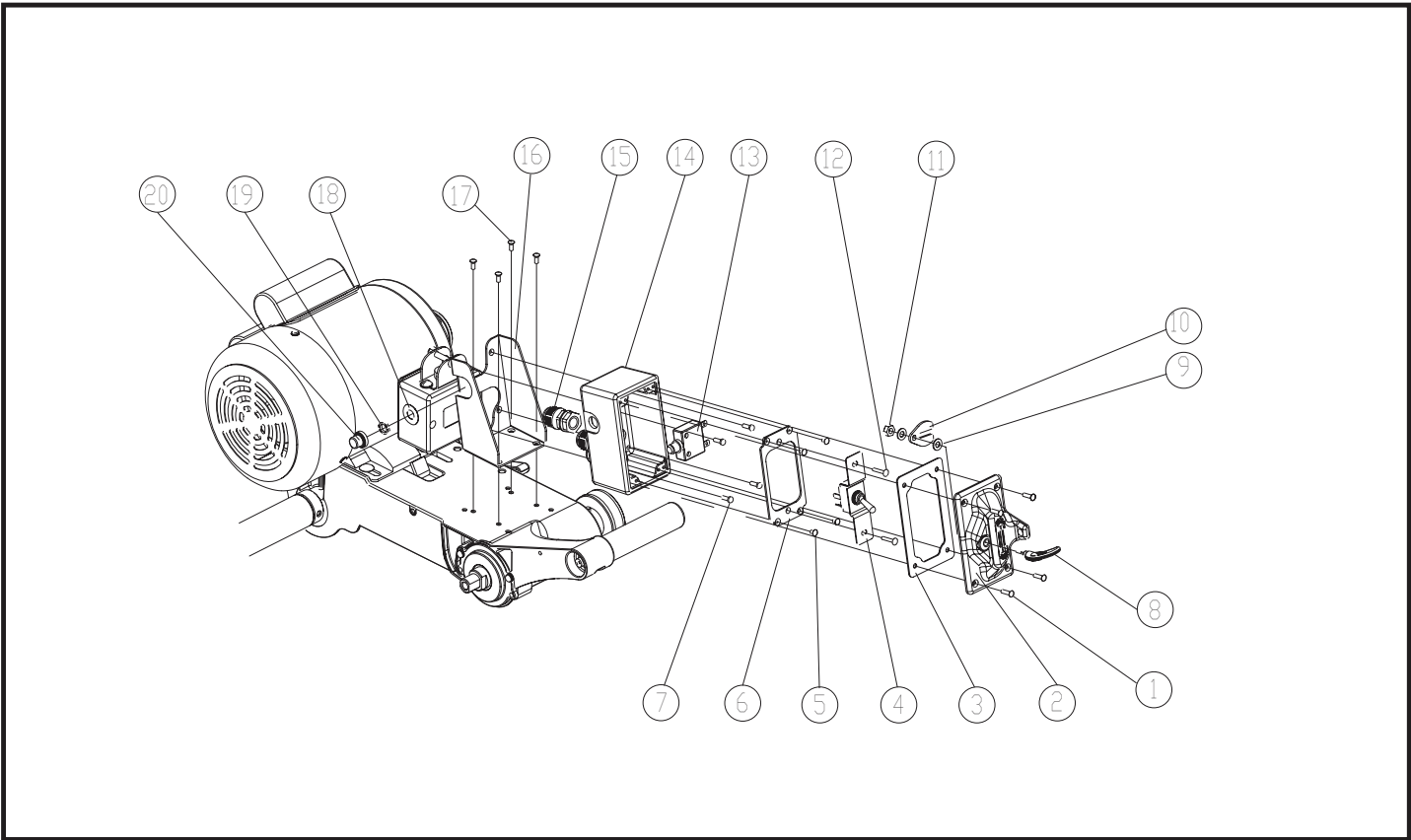
Frame and Dust/Water Collecting Pan



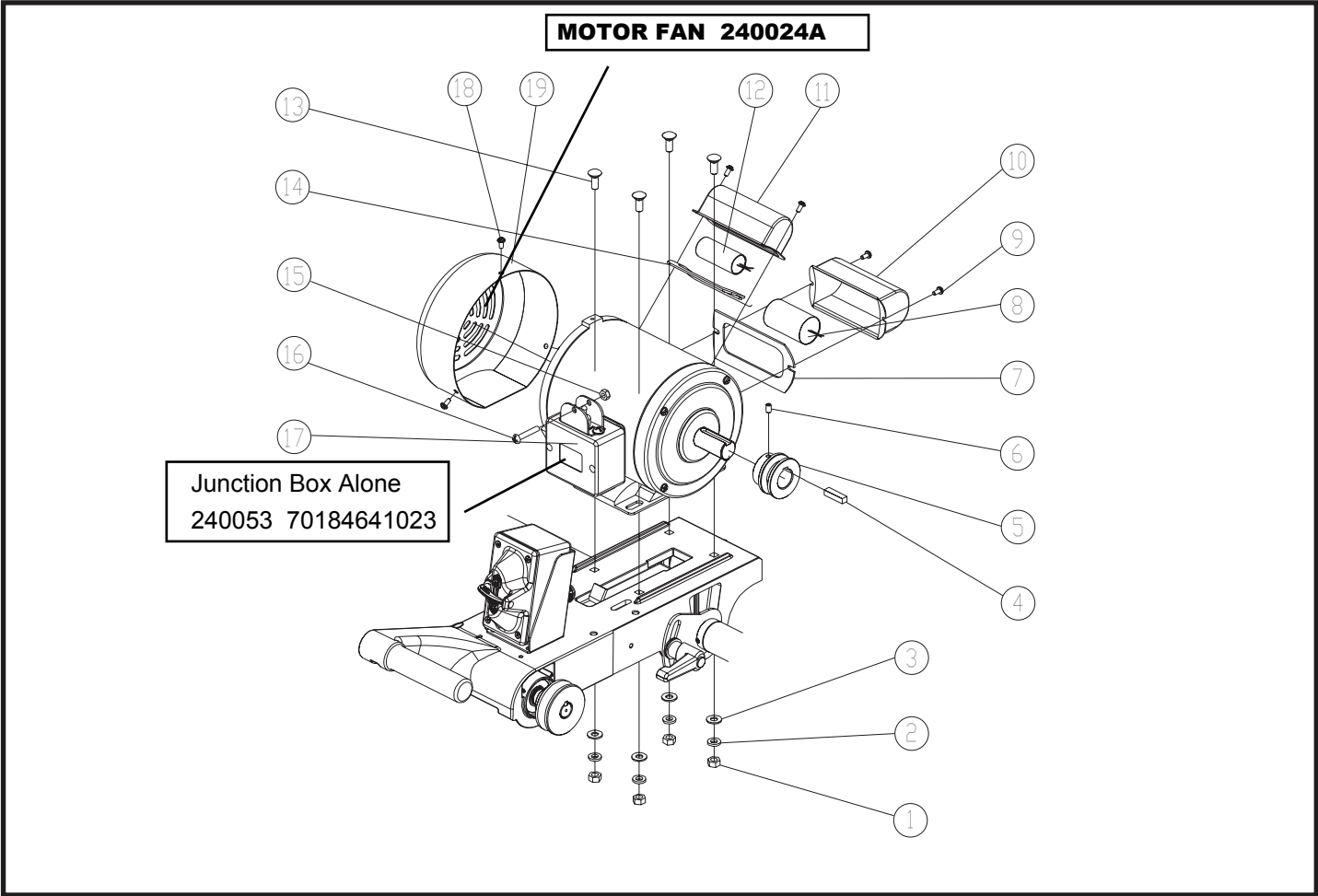
Rail Assembly



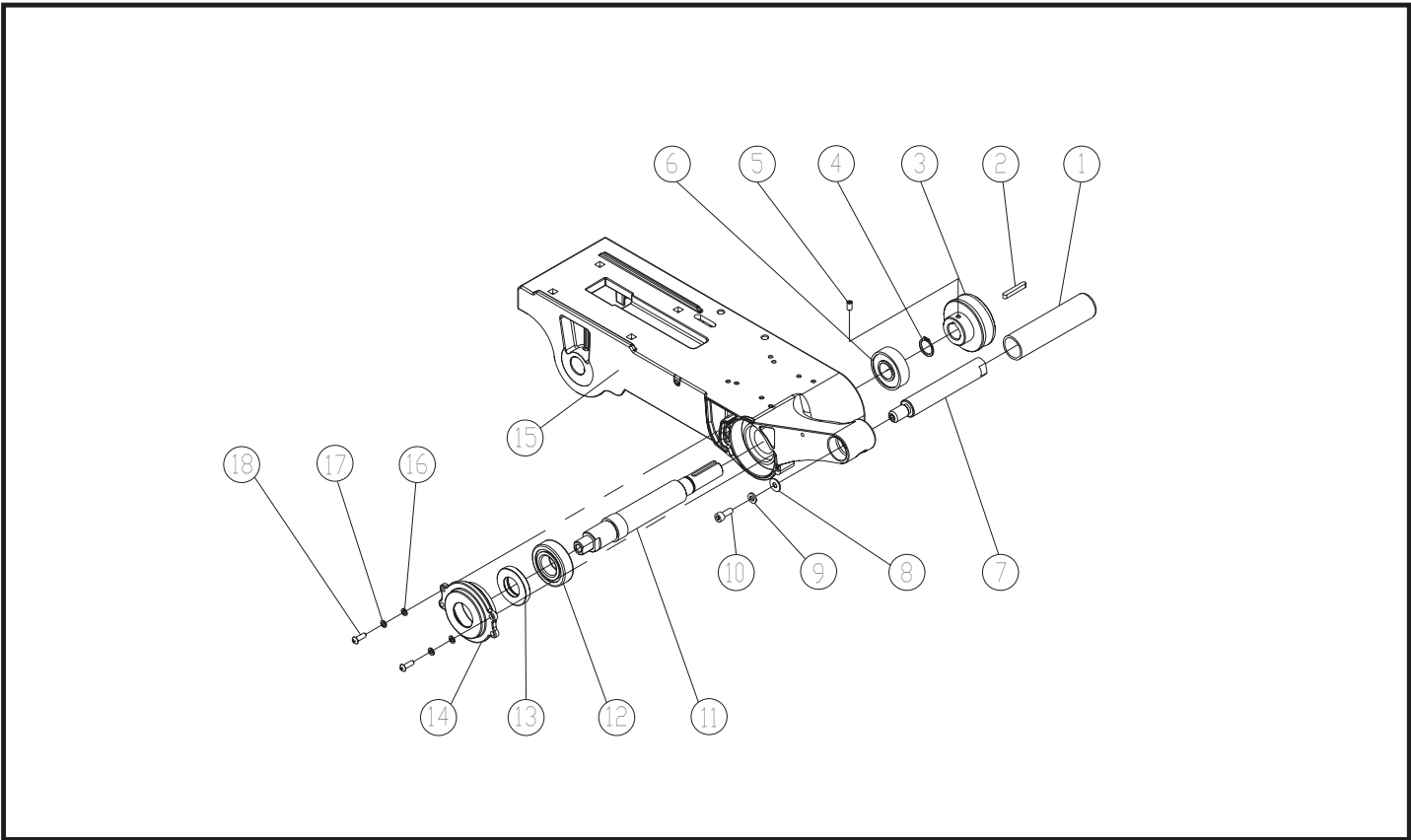
Cutting Table Assembly



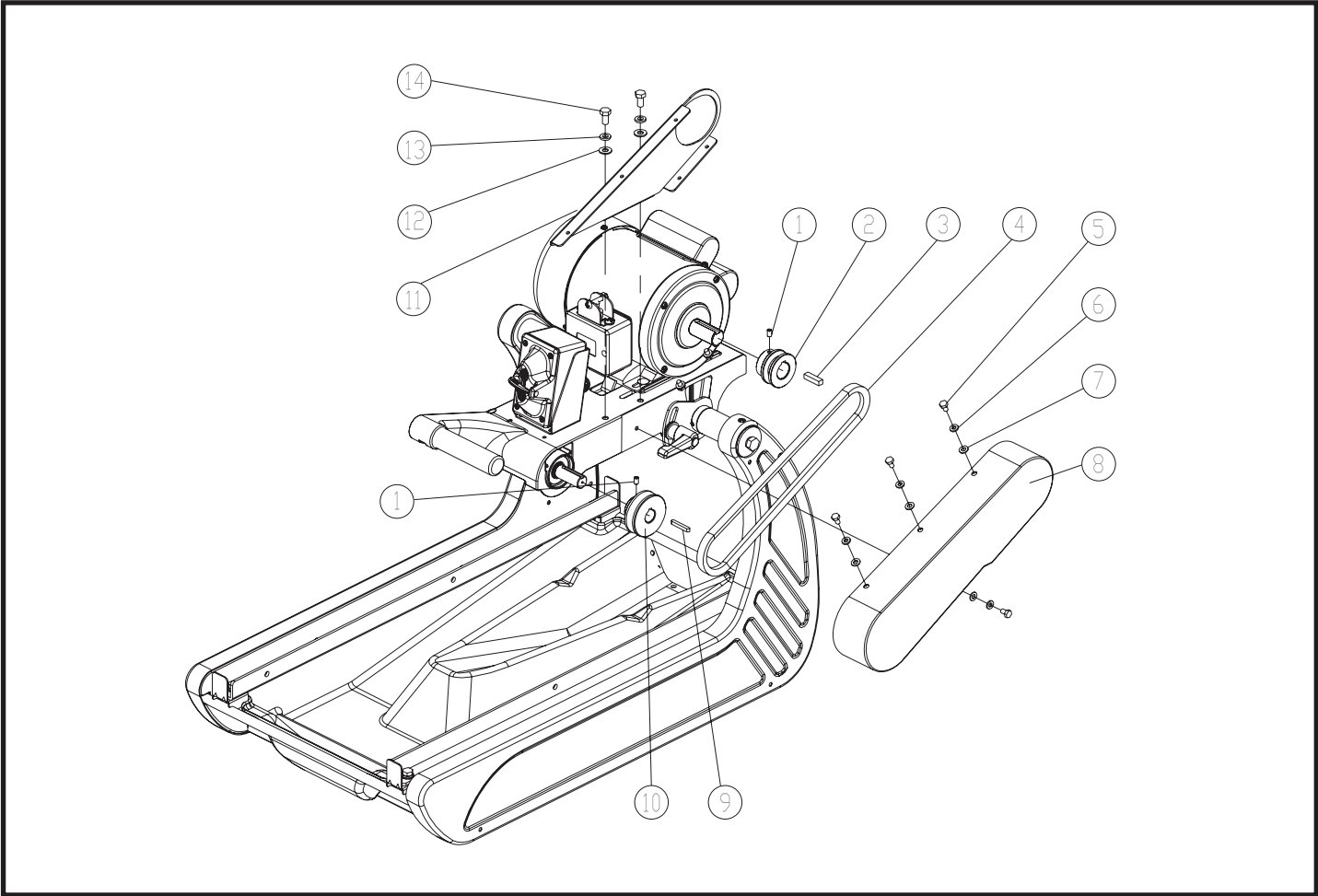
Electrical System



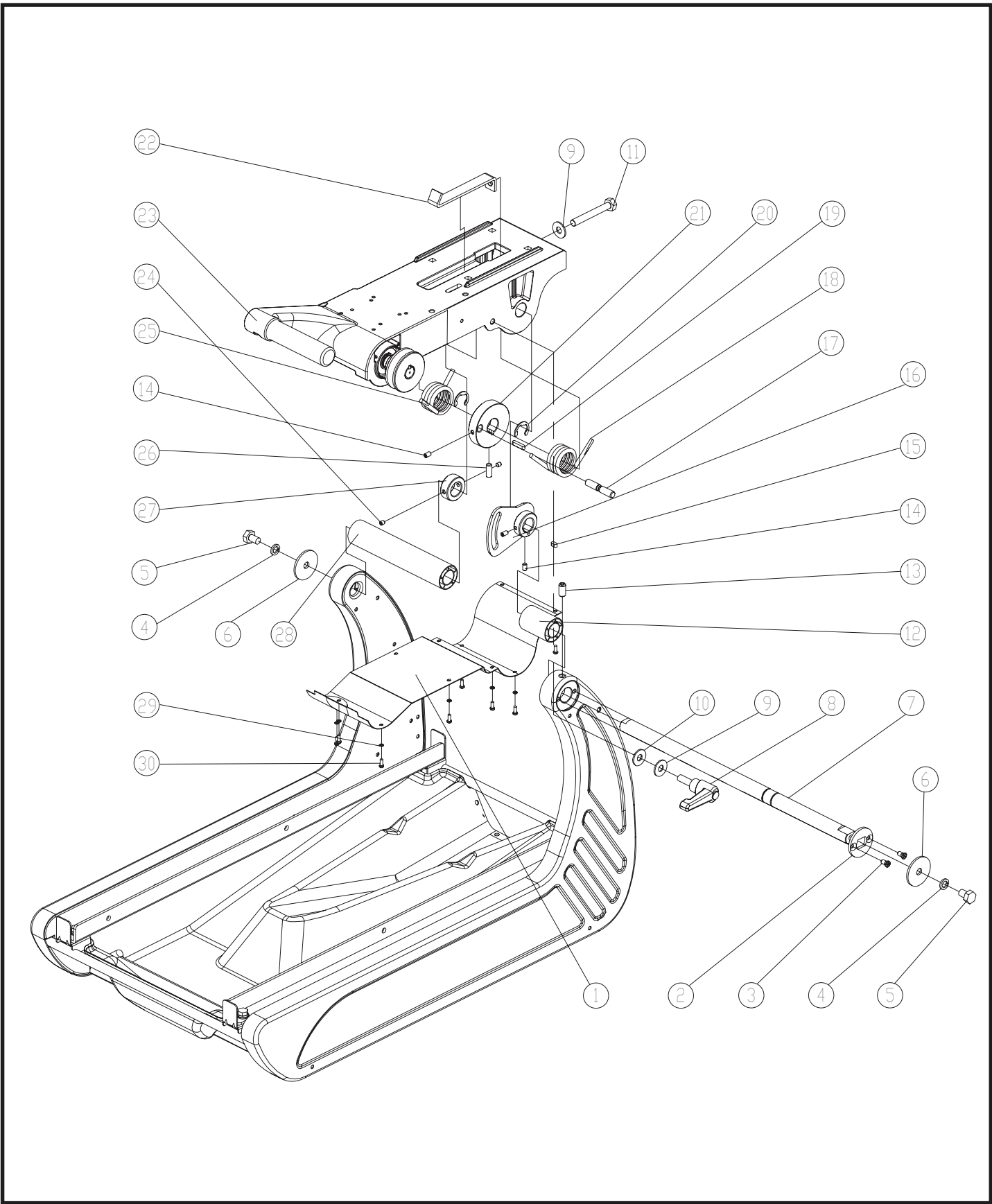
Motor Assembly



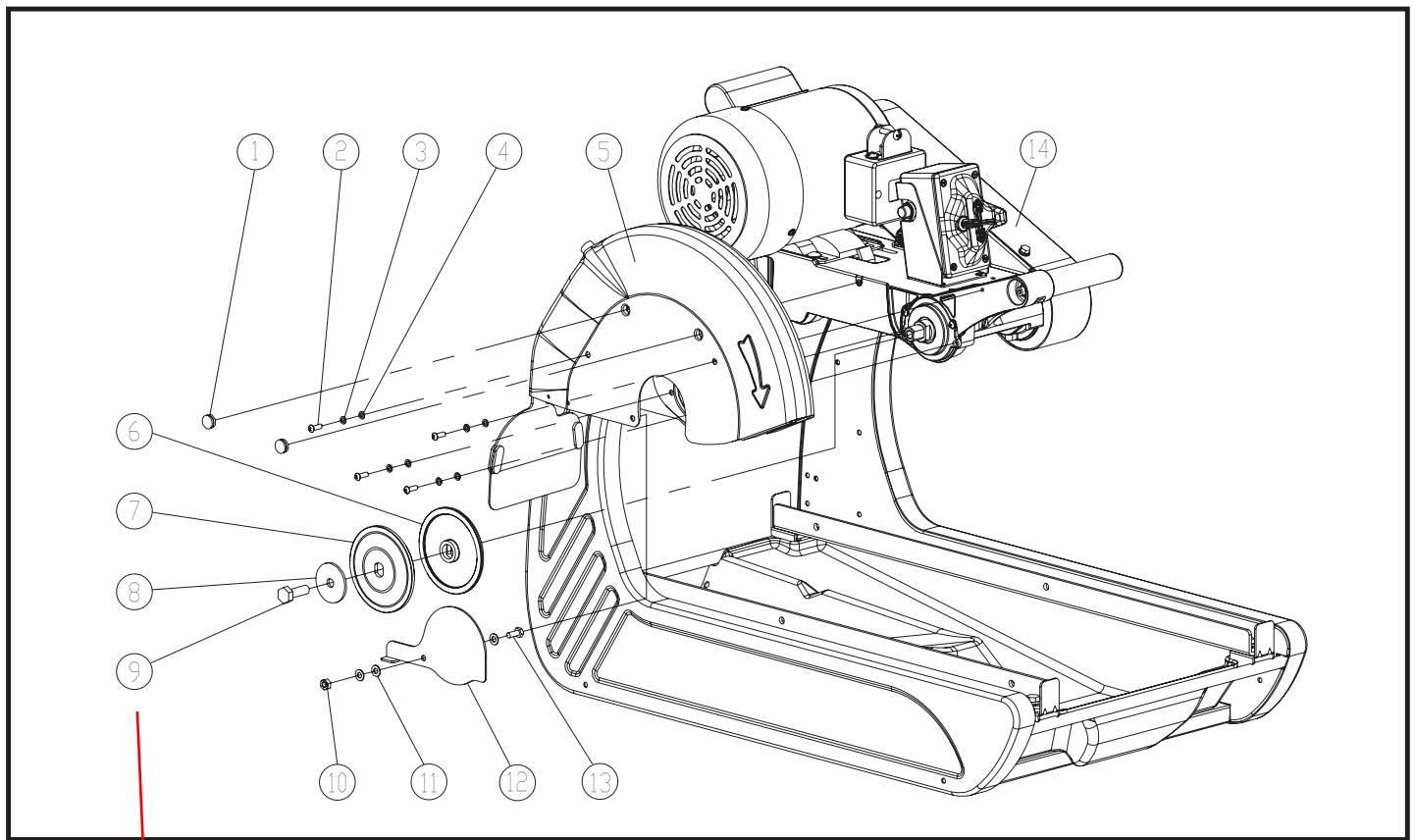
Blade Shaft and Handle Assembly



Belt Guard Assembly



Cutting Head Assembly



Blade Guard Assembly

Bolt for Blade
~~235013~~

BBM158 / YBM158 Parts List

Pos.	Description	QTY REQ	Norton Part No.	UPC
Conveyor Cart Assembly - Figure 1				
1	SCR M8 X 45 1.25 DIN933	2	235005	70184600728
2	WHEEL U SHAPE (2)	1	235006	70184600729
3	CONVEYOR CART COMP W/WHEELS	1	235002	70184600727
4	WHEEL FLAT (2) BBM/YBM307	1	235008	70184600731
5	SCR M8 X 40 1.25 DIN933	2	235009	70184600732
6	RULER GUIDE BBM/YBM307	1	235010	70184600733
7	WASHER M8 DIN125 FLAT	1	232110	70184600562
8	WASHER LOCK M8 DIN127B	1	235012	70184600734
9	SCR M8 X 20 1.25 DIN933	1	235013	70184600735
	Rip Guide		234030	
Conveyor Cart Assembly - Figure 2				
1	WHEEL FLAT (2) BBM/YBM307	2	235008	70184600731
2	LOCK NUT	1	235014	70184600736
3	SPRING TENSION LOCK PIN	1	235015	70184600737
4	LOCK PIN BBM/YBM307	1	235016	70184600738
5	SCR M6 X 30 1.0 DIN933	1	235017	
6	Washer/ Ø13XØ6.5X1.0(T)	1	235018	
7	SPRING TENSION TBL LCK BK	1	235019	70184600757
8	WASHER M6 DIN 125	1	235020	70184600585
9	BRCKET TABLE LOCKING	1	235021	70184600758
10	SCR M6 X 10 1.0 DIN933	1	235022	70184600851
11	WASHER LOCK M6 DIN127B	1	235023	70184600756
12	Washer/ Ø13XØ6.5X1.0(T)	1	235018	
13	WHEEL U SHAPE (2)	1	235006	70184600729
Frame and Dust/Water Collecting Pan				
1	Frame BBM	1	235025	70184600761
2	Dust/Water Collecting Pan	1	235026	70184600762
Rail Assembly				
1	SCR M8 X 20 1.25 DIN933	1	235013	70184600735
2	WASHER LOCK M8 DIN127B	1	235012	70184600734
3	Washer/ Ø19XØ8X2(T)	1	235029	
4	RAIL (2) BBM307	1	235030	70184600763
5	Dust/Water Collecting Pan	1	235026	70184600762
6	Frame BBM	1	235025	70184600761
Cutting Table Assembly				
1	SCR M8 X 16 1.25 DIN933	1	235031	70184600764
2	WASHER LOCK M8 DIN127B	1	235012	70184600734
3	WASHER M8 DIN125 FLAT	1	232110	70184600562
4	Cutting Table Position Bracket (qty required=2)	2	235034	70184600765
5	Conveyor Cart Complete With Wheels	1	235002	70184600727
Electrical System				
1	SCR M4 X 16 0.7 DIN933	4	235057	70184600786
2	Switch Box Cover	1	235200	
3	Rubber Gasket	1	235201	
* 4	Internal Toggle Switch (Voltage Change Toggle Switch)	1	240060	70184629986
5	M4 X 0.7 X 6L Countersunk Screw (qty. required = 4)	4	235203	
6	Mounting Plate	1	235204	
7	M4 X 0.7 X 12L Phillip Screw (qty. required = 4)	4	235205	

*

Toggle Switch (POWER)

1

233003

8	External Rotary Switch	1	235206	
9	M6 Narrow Washer	1	235018	
10	C-Plate	1	235207	
11	NUT M6 DIN985 LOCK	1	235136	70184600850
12	#6-32 X 5/8"L Phillip Screw (qty. required = 2)	2	235208	
13	Circuit Breaker	1	233004	70184680859
14	Switch Housing	1	-----	
15	Cable Gland	1	235210	
16	Switch Housing Bracket	1	235211	
17	SCR M4 X 10 0.7 DIN933	4	235039	70184600769
18	Circuit Breaker Washer	1	235212	
19	Circuit Breaker Nut	1	235213	
20	Circuit Breaker Boot	1	235214	

Motor Assembly				
1	NUT 5/16-18 HEX	4	8142002	70184650348
2	WASHER LOCK M8 DIN127B	4	235012	70184600734
3	M8 Narrow Washer (qty. required = 4)	4	235029	
4	8 X 7 X 30 Square Key	1	235215	
5	Ø50.8 Double V Groove Pulley	1	235216	
6	SCR M6 X 10 1.0 SET DIN916	1	235076	70184600797
7	Starting Capacitor Gasket	1	235217	
8	Starting Capacitor	1	235218	70184630594
9	#10-24 X 1/4"L Phillip Screw (qty. required = 4)	4	235219	
10	Starting Capacitor Housing	1	235220	70184630593
11	Running Capacitor Housing	1	235221	
12	Running Capacitor	1	235222	
13	BOLT 5/16-18 X 3/4 CARR	4	8024039	
14	Running Capacitor Gasket	1	235223	
15	NUT M6 DIN985 LOCK	1	235136	70184600850
16	M6 X 1.0 X 35L Phillip Screw	1	235224	
17	MOT 2HP 115/230/60 BBM158 (Custom Made N/A Locally)	1	240024	70184630092
18	#10-24 X 3/8"L Phillip Screw (qty. required = 3)	3	235225	
19	Fan Cover	1	235226	
	Power Cable		233001	70184680854
	MOTOR FAN 240024A		240024A	

Motor includes items 7-19

Junction Box 240053
70184641023

junction box W/Cover 240061

Blade Shaft and Handle Assembly				
1	Rubber Grip	1	235052	70184600781
2	5 X 5 X 30 Square Key	1	235227	
3	PULLEY 63.5mm x 13x7 FOR RPF3300A BELT	1	240028	70184630414
4	RING RETAINING 20 x 1.3 DIN471 EXTERNAL	1	300120	70184625592
5	SCR M6 X 10 1.0 SET DIN916	1	235076	70184600797
6	BEARING 6204	1	233012-1	70184681204
7	Handle Bar	1	235051	70184600779
8	WASHER M6 DIN 125	1	235020	70184600585
9	WASHER LOCK M6 DIN127B	1	235023	70184600756
10	SCR M6 X 16 1.0 DIN933	1	235044	70184600778
11	Blade Shaft	1	235228	70184630589
12	BEARING 6205 LB	1	235229	70184630524
13	Double Wall Oil Seal	1	235230	70184630525
14	Bearing Cover	1	235231	
15	Cutting Head Casting Only	1	235232	
16	WASHER M4 DIN125 FLAT	2	235104	70184600873
17	500048 WASHER M5 DIN 7980 LOCK	2	235105	70184622600
18	M5 X 0.8 X 15L Phillip Screw (qty. required = 2)	2	235233	

70184627099

Belt Guard Assembly				
1	SCR M6 X 10 1.0 SET DIN916	2	235076	70184600797

2	Motor V-Groove Pulley	1	235234	
3	8 X 7 X 30 Square Key	1	235215	
4	BELT RPF3300A 13x7 35LI	1	240036	70184628478
5	SCR M6 X 10 1.0 DIN933	4	235022	70184600851
6	WASHER LOCK M6 DIN127B	4	235023	70184600756
7	M6 Narrow Washer (qty. required = 4)	4	235018	
8	Belt Guard	1	235235	70184695036
9	5 X 5 X 30L Square Key	1	235227	
10	Blade Guard Pulley	1	235236	
11	Belt Guard Bracket	1	235237	
12	M8 Narrow Washer (qty. required = 2)	2	235029	
13	WASHER LOCK M8 DIN127B	2	235012	70184600734
14	SCR M8 X 16 1.25 DIN933	2	235031	70184600764

Cutting Head Assembly

1	Cutting Head Underside Shield	1	235238	
2	CROSS BAR POSITION BRK	1	235068	70184600793
3	M6 X 1.0 X 12L Countersunk Screw (qty. required = 2)	2	235069	
4	WASHER M10 DIN127 LOCK	2	27502	70184681609
5	SCR M10 X 20 1.5 DIN933	2	235061	70184600787
6	WASHER M10 X 40 X 3 BLD S	2	235063	70184600788
7	Cutting Head Shaft	1	235239	
8	M10 X 1.5 X 30L Adjustable Knob	1	235240	
9	WASHER M10 DIN125	1	27504	70184681610
10	M10 Waved Washer	1	235241	
11	SCR M10 X 75 1.5 DIN933 HHC FULL THD	1	235242	
12	Short Aluminum Sleeve	1	235243	
13	SCR M10 X 20 SET DIN916	1	235077	70184600798
14	SCR M6 X 10 1.0 SET DIN916	2	235076	70184600797
15	5 X 5 X 10 Square Key	1	235244	
16	Cutting Depth Guide	1	235245	
17	Spring Bracing Bar	1	235246	
18	Right Torsional Spring LEFT	1	235247	70184693953
19	5 X 5 X 24 Square Key	1	235085	70184600804
20	M22 External C-Clip (qty. required = 2)	2	235086	
21	Spring Brace Mount	1	235248	
22	Motor Belt Tensioning Bracket	1	235249	
23	Cutting Head Casting Only	1	235232	
24	SCR M6 X 10 1 DIN916 SET	2	081949	70184600564
25	Left Torsional Spring RIGHT	1	235250	70184640242
26	SCR M8 X 20 1.25 DIN916	1	235078	70184600799
27	Positioning Collar	1	235075	70184600796
28	Long Aluminum Sleeve	1	235251	
29	WASHER M4 DIN127 LOCK	11	235104	70184600873
30	SCR M4 0.7 X 10 DIN966 PHILIPS	11	235252	

Guard Assembly

1	Plug	1	235253	
2	SCR M5 X 10 0.08 DIN966 PHILIPS	4	235254	70184630526
3	500048 WASHER M5 DIN 7980 LOCK	4	235105	70184622600
4	WASHER M4 DIN125 FLAT	4	235104	70184600873
5	BLADE GUARD BBM/YBM307	1	235131	70184600845
6	TIGHT COLLAR BBM/YBM307	1	235133	70184600847
7	LOOSE COLLAR BBM/YMB307	1	235134	70184600848
8	WASHER M10 X 40 X 3 BLD S	1	235063	70184600788
9	SCR M10 X 20 1.5DIN933 LH (Blade Bolt)	1	235135	70184600893
10	NUT M6 DIN985 LOCK	1	235136	70184600850
11	M6 Narrow Washer (qty. required = 3)	3	235018	
12	ARBOR COVER BBM/YBM307	1	235132	70184600846

13	SCR M6 X 10 1.0 DIN933	1	235137	70184600851
14	Complete Cutting Head w/o Blade Guard	1	235255	

Grant, Bob E.

From: Cox, John D.
Sent: Wednesday, January 06, 2010 12:35 PM
To: Andrew Quirl; Contreras, Alysia D.; Fronterhouse, Debra K.; Grant, Bob E.; Hamilton, Laurie S.; Hansen, Robert C.; McClinton, Robin; Miller, Bryan K.; Salinas, Adrian M.; Salinas, John; Shipp, Melissa L.
Subject: FW: Electrical Diagram BBM158

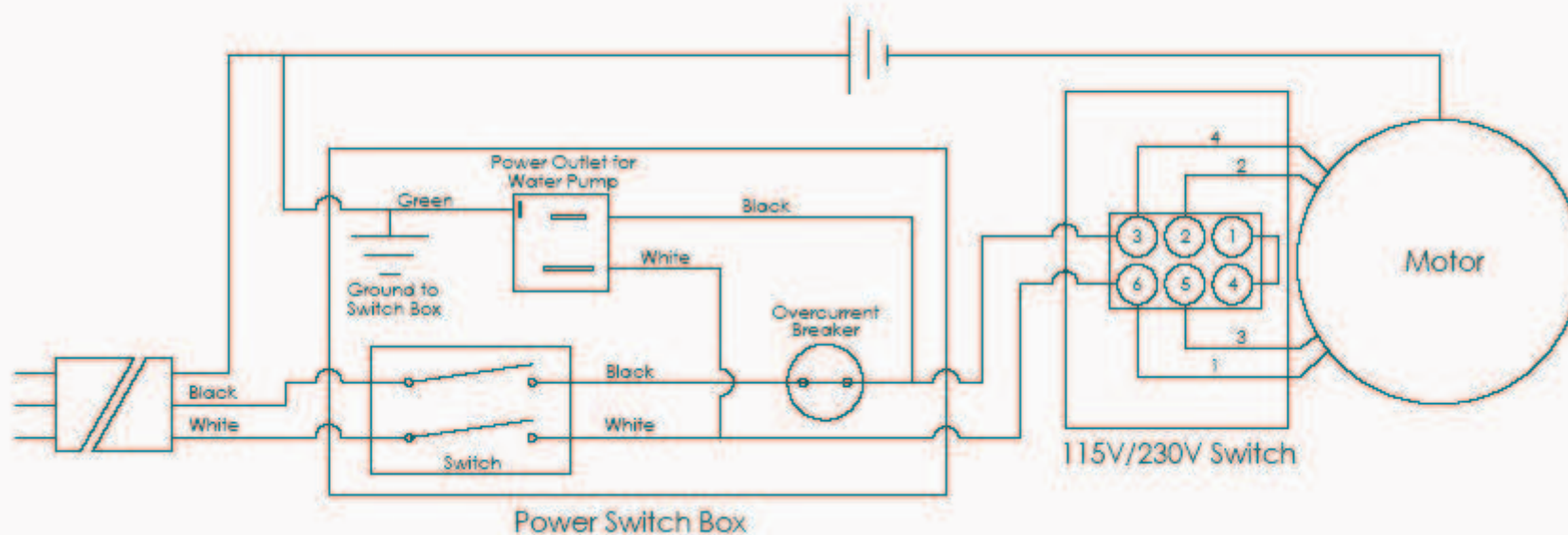
In case any one else calls about it...

John Cox | CSR
Saint Gobain Abrasives
2770 W Washington | Stephenville, TX 76401
phone 254-918-2306 ext 6484 | fax 254-918-2309
john.d.cox@saint-gobain.com
www.nortonconsumer.com
www.nortonfloorsanding.com
www.nortonprocleaning.com
www.nortonstones.com
www.nortonconstructionproducts.com

From: Edwards, Paul S.
Sent: Wednesday, January 06, 2010 12:30 PM
To: Cox, John D.
Subject: RE: Electrical Diagram BBM158

Hello John,

Here you go:



Regards,

Paul Edwards

From: Cox, John D.
Sent: Wednesday, January 06, 2010 12:06 PM
To: Edwards, Paul S.
Subject: Electrical Diagram BBM158

Hello Paul,
 I had a distributor to call and ask for the electrical diagram for this saw. Is there one available?

He originally called because the breakdown was not on the website. I sent him one, but he called back about the wiring.

Please let me know.

Thanks,

John Cox | CSR
Saint Gobain Abrasives

1/6/2010