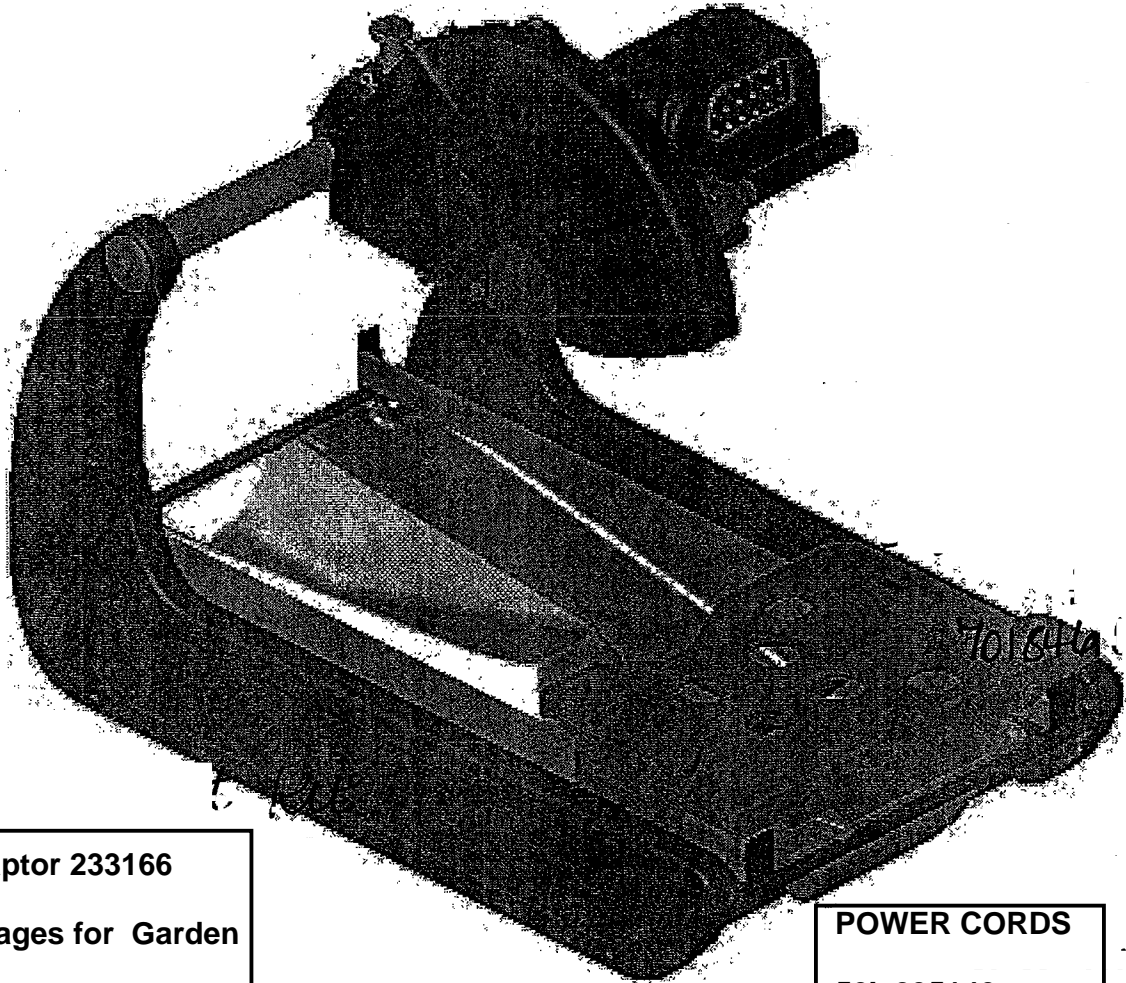


# OWNERS MANUAL



Garden Hose Adaptor 233166

See following 2 pages for Garden  
Hose Water Kit Parts

STAND 235001  
WING BOLTS 232389

motor replacement kit:  
70184622406

POWER CORDS

50' 235140

6' 235141

**MODELS**  
**BBM307**  
**YBM307**

wet cutting kit 235003

conveyor cart: 235002

water collecting pan: 235026

**WRENCH 233041**

THERMAL RESET BUTTON 235167

***clipper***  
NORTON

**D**  
**RO-CUT**  
PRODUCTS

# NORTON

## BLOCK BUSTER MINI BBM307 COMPACT MASONRY SAW



The Norton BBM307 compact masonry saw combines portability with a light weight rugged frame. An innovative compact frame coupled with a powerful motor make this saw simple to transport and set up under the toughest job site conditions. The compact size with a 14" blade capacity and an open back design provides a level of utility not found on similar products. The uni-body frame contour resists flexing and assures true and accurate cuts in hard dense materials. Optional accessories for the BBM307 include a wet cutting kit to increase cutting speed and diamond blade life in hard materials. For dry cutting, a dust recovery attachment is available for use when dry cutting in close quarters or low ventilation. The BBM307 compact saw and Norton diamond blade combine to provide utility and performance that exceeds the expectations for a compact masonry saw.



An improved extruded aluminum motor housing extends life and quality of the motor during heavy commercial use.



Extended length, open back frame for rip cutting 16" and larger masonry materials.

### Features

- Compact masonry saw that one person can carry.
- Low amperage, high horse power, dust-resistant motor.
- Rigid all-steel unibody construction provides the best weight to strength ratio of any saw in its class.
- Pivoting head with depth lock allows cutting of material up to 8" thick.
- Ergonomic design provides increased operator efficiency, reduces fatigue, and provides a clear view of the working area.
- Open back design and a wide body easily accommodates materials up to a 8" x 8" x 16".
- Channel flow pan directs dust and water away from operator and out the back of the saw.
- Front and rear handles for easy transport and loading.
- Includes a Norton diamond blade.

### Specifications

MODEL:	
BBM307	3HP Motor
UPC Number:	701846 00684
DIMENSIONS / WEIGHTS:	
Length	31-1/2 inch (800mm)
Width	18-1/2 inch (470mm)
Height Max	30 inch (762mm)
Weight Uncrated	Approx. 70 Lbs.
PERFORMANCE CHARACTERISTICS:	
Max. Blade Diameter	14 inch
Max. Depth of Cut	5 inch
BLADE DIAMETER	CUTTING DEPTH
14 inch	5 inch (127mm)
Blade Shaft Diameter	1 inch (25.4mm)
Collar Diameter	4 inch (102mm)
Blade Shaft Speed	3,600 RPM
Horse Power	3 HP
Amps	15 Amps
Voltage	115-volts

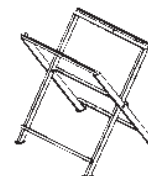
### Optional Accessories



Wet Kit:  
UPC 701846 00704



Dust Recovery Kit:  
UPC 701846 26330  
(includes Vacuum Adapter Kit)



Folding Stand:  
UPC 701846 00691



Vacuum Adapter Kit:  
UPC 701846 00753

**WRENCH 233041**

www.nortonclipper.com

## Optional Dry Cutting Kit, Optional Wet Cutting Kit

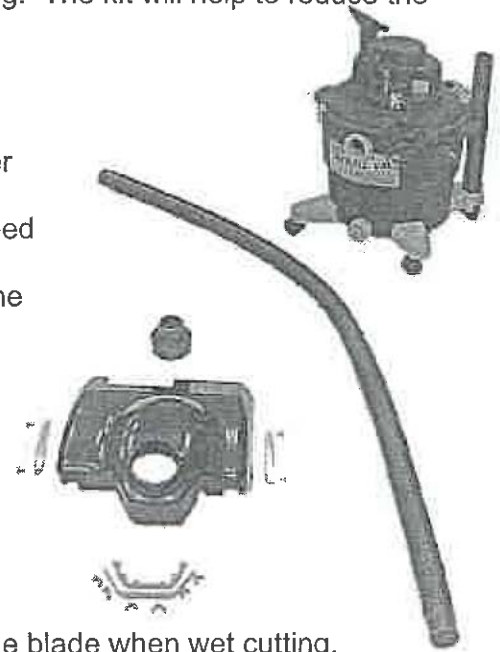
The optional Dry Cutting Kit is used to collect dust when dry cutting. The kit will help to reduce the amount of visible dust in the air when properly installed.

To install the Optional Dry Cutting Kit:

1. Disconnect the Power Supply
2. Attach the Dust/Water Collecting Splash Guard Assembly as per the instructions on page 29.
3. Attach the Vacuum Hose Adapter to the 4" outlet with the supplied band clamp.
4. Attach the Vacuum Hose to the Vacuum Hose Adapter and to the Vacuum.
5. To operate the Vacuum refer to the Vacuum Owner's Manual.

Optional Dry Cutting Kit part number 235004 consist of:

- Vacuum with Hose
- Vacuum Adapter
- Band Clamp



The optional Wet Cutting Kit is used to control dust and to cool the blade when wet cutting.

To install the Optional Wet Cutting Kit:

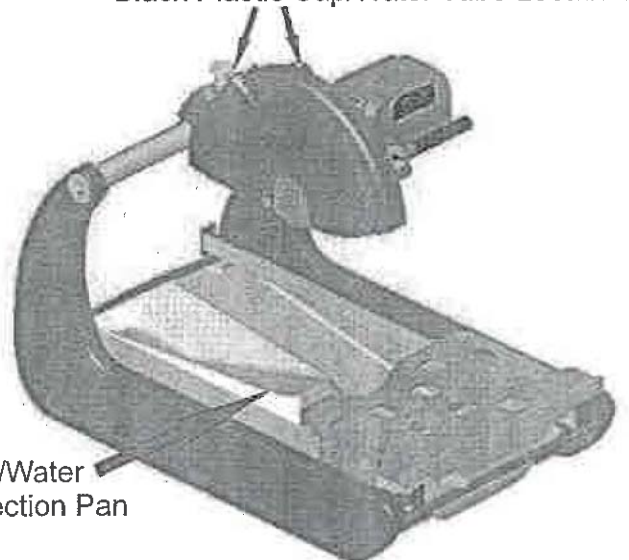
1. Disconnect the Power Supply.
2. Remove the two (2) Black Plastic Plugs from the Blade Guard Water Tubes.
3. Place one of each of the Water Outlet Hose into each of the Blade Guard Water Tubes.
4. Place the Bucket full of clean water under the rear of the Dust/Water Collection Pan. NOTE: The Bucket should be placed so that it will collect any water that runs out of the rear of the pan.
5. Place the Water Pump into the Bucket of clean water
6. Connect the Water Pump Electrical Cord to the Water Pump Power Connector on the saw.  
NOTE: Use the Flow Control Valve to regulate the water flow rate. It may be required to add additional water to the Dust/Water Collection Pan. Clean the Water Pump and Water Hose after each use by pumping clean water thru the Wet Cutting Kit.

Optional Wet Cutting Kit part number 235003 consist of:

- Water Pump
- Hose Assembly
- Flow Control Valve
- Hose "Y" Fitting
- Bucket
- Blade Guard Splash Guard



Black Plastic Cap/Water Tube Location



Dust/Water  
Collection Pan

235003	70184600704	WET CUTTING KIT BBM307	Make	1	Units
Component	UPC#	Description	U/M	Qty Required	QTY To Pull From Inventory
214169	70184668392	PUMP WATER PE-1	EA	1	1
226028	70184669246	Valve Flow Control	EA	1	1
64197	70184600855	Fit Barb 3/8M x 1/4 FNPT	EA	1	1
123076	70184648579	"Y" 3/8 x 3/8	EA	1	1
59012	70184600856	Tubing 1/2OD x 3/8 ID	FT	1	1
59012	70184600856	Tubing 1/2OD x 3/8 ID	FT	1	1
59012	70184600856	Tubing 1/2OD x 3/8 ID	FT	4	4
226106	70184675591	Bucket 5 Gallon	EA	1	1



Regards,

Paul Edwards | Saint-Gobain Abrasives, Inc.

WHEN ORDERING TUBING, ORDER  
UPC 70184627867 3/8" x 1/2" x 48"

# ! WARNING !

## Read Carefully

Most Motor Trouble is the result of too Small or too Long of an Extension Cord. Cords must be One-Piece and as short as possible. Cords should be no longer than shown in the following table.


Wire Gauge	1-1/2 to 2HP		3HP		5HP	
	115v	230v	115v	230v	230v	50'
12 AWG	25'	100'	-NA-	50'	50'	50'
10 AWG	50'	150'	25'	100'	50'	50'
8 AWG	75'	250'	50'	150'	100'	100'
6 AWG	-NA-	-NA-	75'	250'	150'	150'

For Best Operation Always Connect to 230 volt Supply  
216564

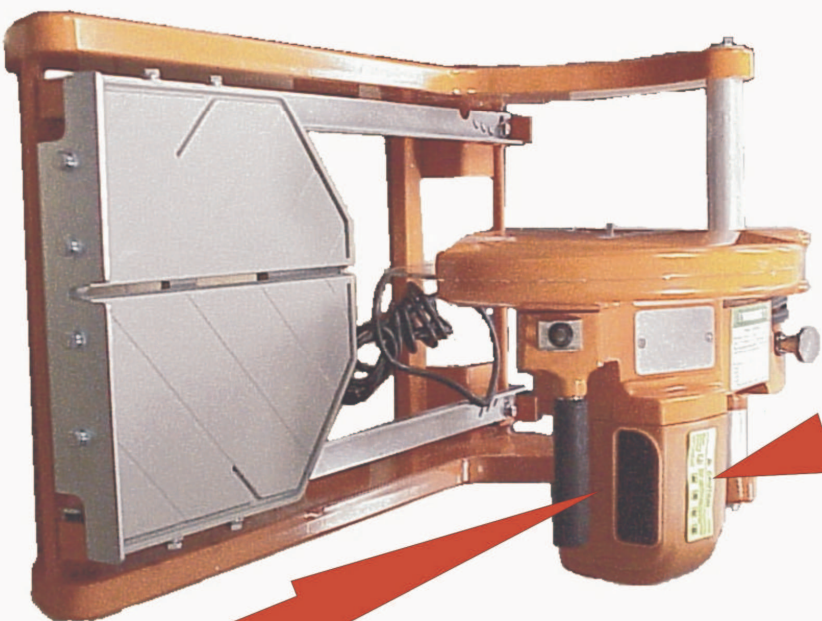
Decal P/N: 216564

**CAUTION** P/N:227234

Read owner's manual  
Failure to comply could result in serious injury

When operating this machine always wear approved safety gear for:  
 head  
 eyes  
 ears  
 hands

Decal P/N: 227234

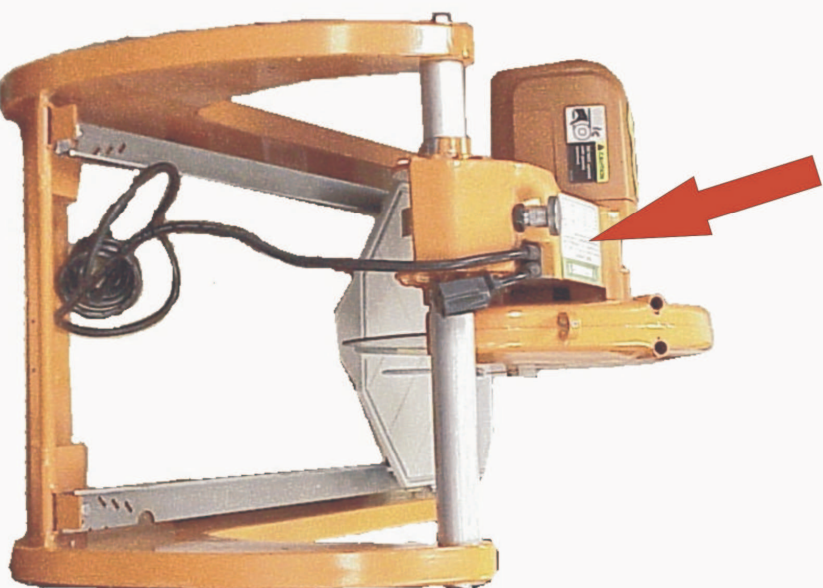


**CAUTION** P/N:227237

DO NOT operate with guards removed.



Decal P/N: 227237



# ! WARNING !

Clean Air Filter Before Each Use  
 Inspect Air Filter and Replace Filter if Damaged  
 Do Not Use Machine with Dirty, Damaged, Or Missing Air Filter  
 Reinstall Filter Before Use

Decal P/N: 232115

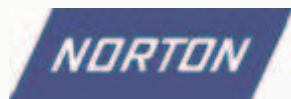
**Grant, Bob E.**

---

**From:** Salinas, John  
**Sent:** Tuesday, September 16, 2008 1:47 PM  
**To:** Grant, Bob E.  
**Cc:** McClinton, Robin B.  
**Subject:** FW: BBM307 Water Hose Parts  
**Attachments:** image001.jpg; image002.jpg; image004.jpg

*May be of some use for the BBM307 breakdown*

**Thanks,  
John Salinas**



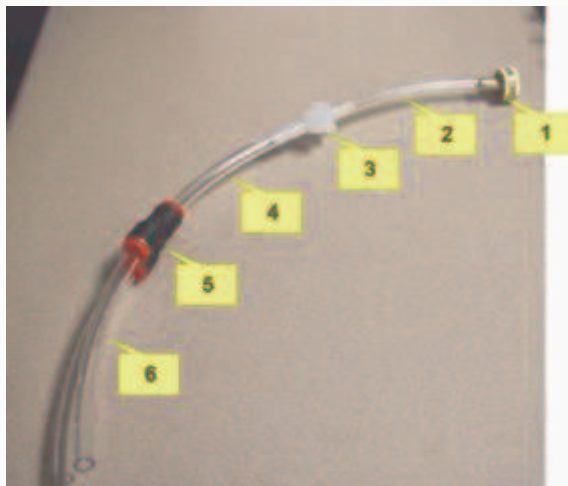
**Customer Service  
Construction Products  
PH: 800 554 8003  
FAX: 800 443 1092  
John.Salinas@Saint-Gobain.com**

---

**From:** Edwards, Paul S.  
**Sent:** Tuesday, September 16, 2008 1:24 PM  
**To:** Salinas, John  
**Subject:** BBM307 Water Hose Parts

Hello John,

As per your VM here are the BBM307 water hose parts:

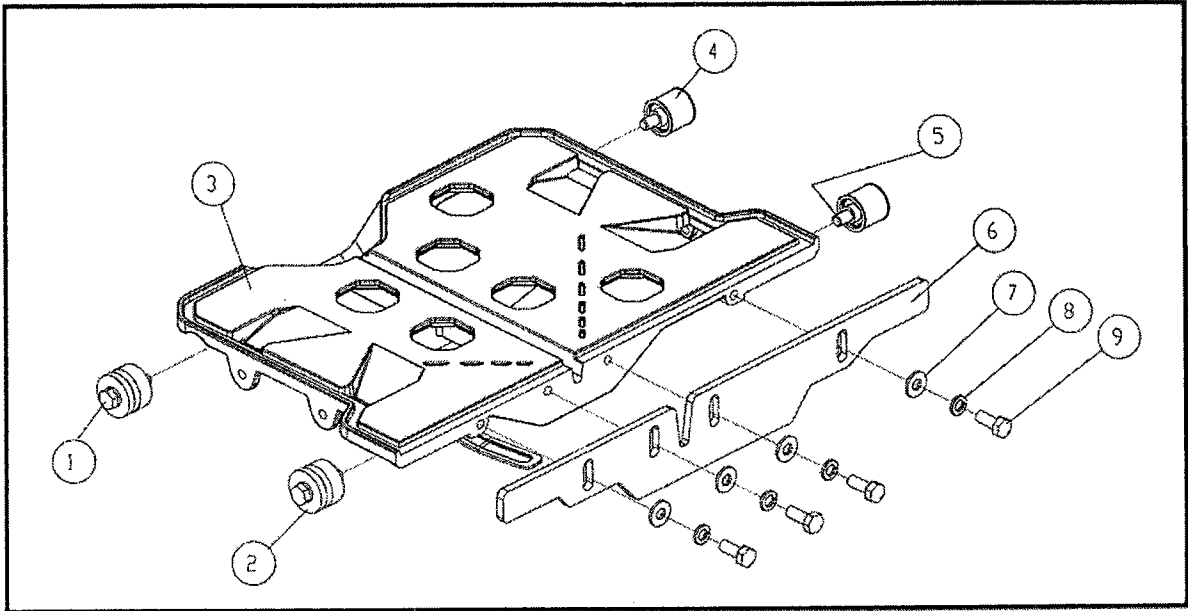


Number	Description	Part#	UPC#	QTY
1	GARDEN HOSE ADAPTER ASSY BBM/YBM	233166	70184624355	1
2	WATER TUBE SHORT BBM	235100	70184600820	1
3	VALVE BBM307	235101	70184600821	1
4	WATER TUBE SHORT BBM	235100	70184600820	1
5	FIT HOSE "Y" BBM307 5/16	235097	70184600818	1
6	WATER TUBE SHORT BBM	235100	70184600820	1

Regards,

Paul Edwards  
Design/Product Engineer  
Saint-Gobain Abrasives  
Phone: 770-967-3954 ext 251  
Fax: 770-967-4287  
Email: Paul.S.Edwards@saint-gobain.com

# BBM307/YBM307 Block Buster Mini Masonry Saw



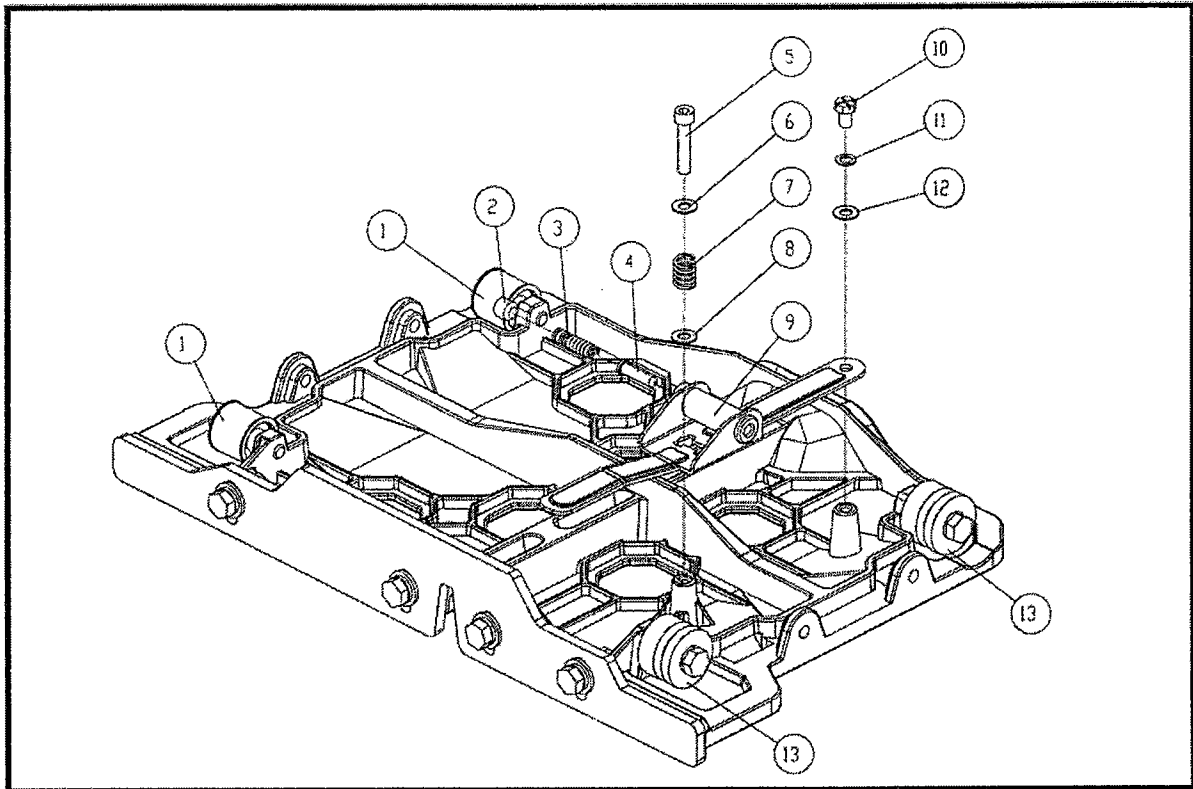
<b>Conveyor Cart Assembly (part number: 235002) Figure - 1</b>		
Item	Description	Part Number
1	Screw M8 x 45 1.25 DIN933 (qty required= 2)	235005
2	Wheel U Shape (2 pcs./set)	235006
3	Conveyor Cart Casting (Casting Only)	235007
4	Wheels Flat (set of 2)	235008
5	Screw M8 x 40 1.25 DIN933 (qty required= 2)	235009
6	Ruler Guide	235010
7	Washer M8 DIN125 Flat (qty required= 4)	232110
8	Washer Lock M8 DIN127B (qty required= 4)	235012
9	Screw M8 x 20 1.25 DIN933 (qty required= 4)	235013

**RIP GUIDE**

**234030**



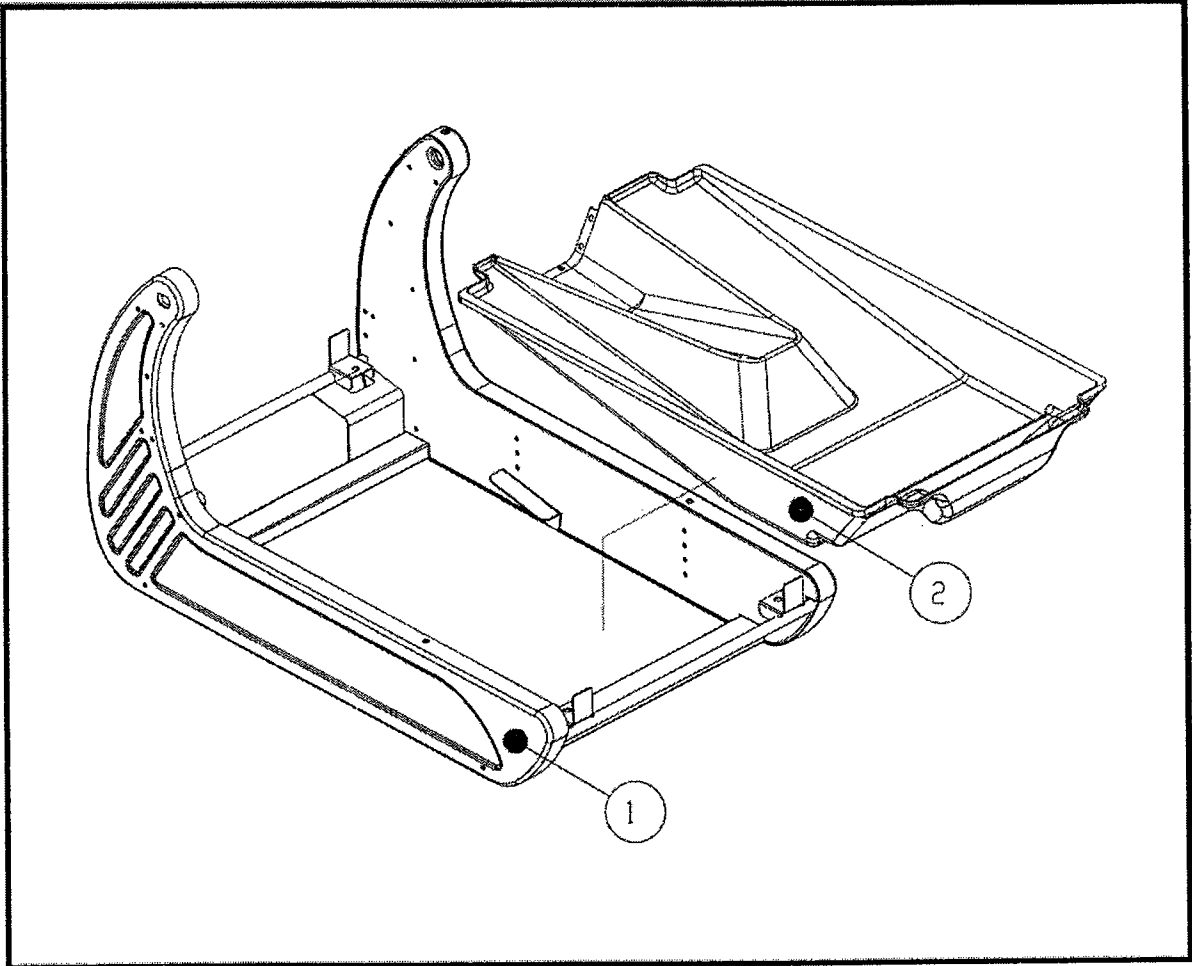
# BBM307/YBM307 Block Buster Mini Masonry Saw



**Conveyor Cart Assembly Figure - 2**

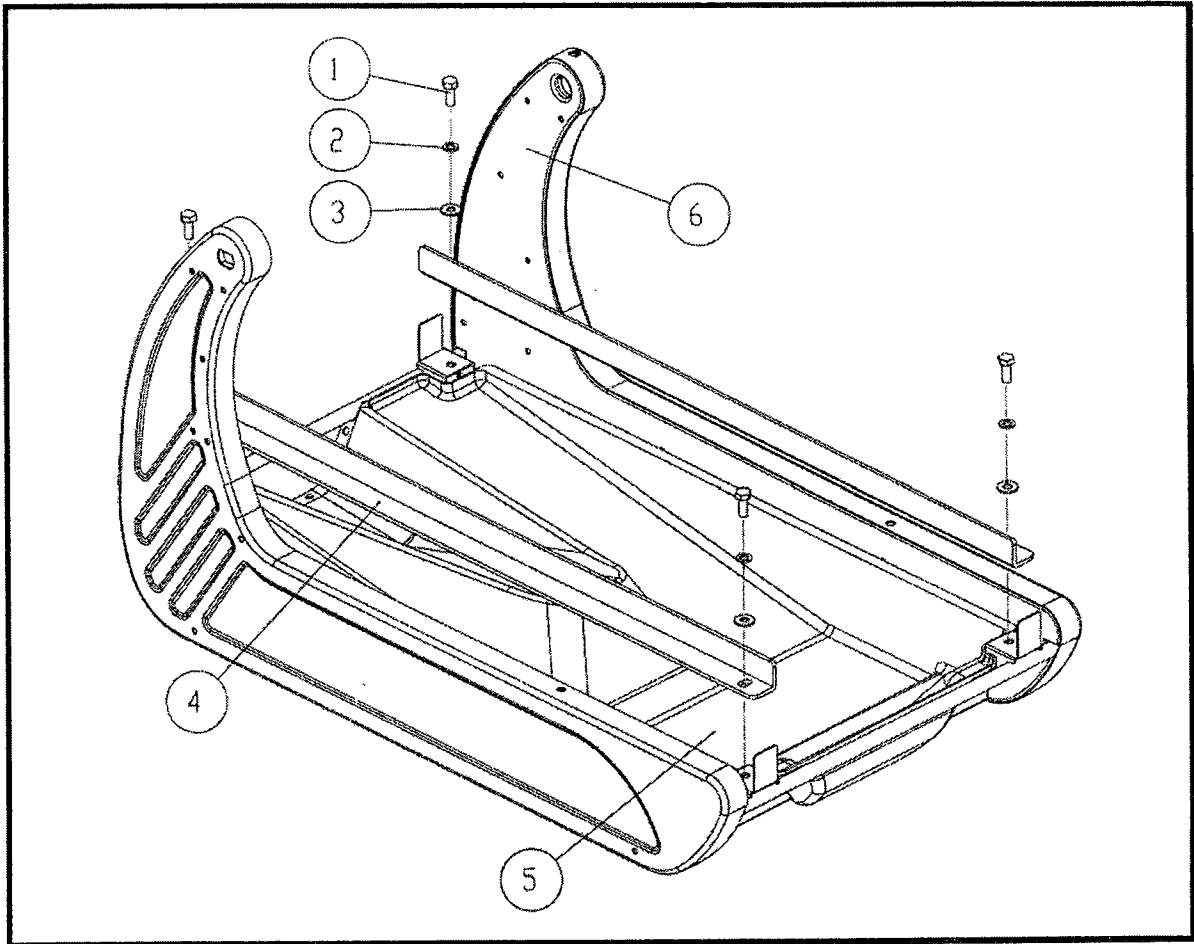
Item	Description	Part Number
1	Wheel Flat (2 pcs./set)	235008
2	Lock Nut	235014
3	Spring Tension for Locking Pin	235015
4	Lock Pin	235016
5	Scr M6 x 30 1.0 DIN933 (qty required= 1)	235017
6	Washer Lock M6 DIN127B (qty required= 1)	235018
7	Washer Lock M6 DIN127B (qty required= 1)	235019
8	Spring Tension for Table Locking Bracket	235018
9	Bracket Table Locking	235021
10	Scr M6 x 10 1.0 DIN933 (qty required= 1)	235022
11	Washer Lock M6 DIN127B (qty required= 1)	235018
12	Washer M6 DIN125 (qty required=1)	27539
13	Wheel U Shape (2pcs./set)	235006

# BBM307/YBM307 Block Buster Mini Masonry Saw



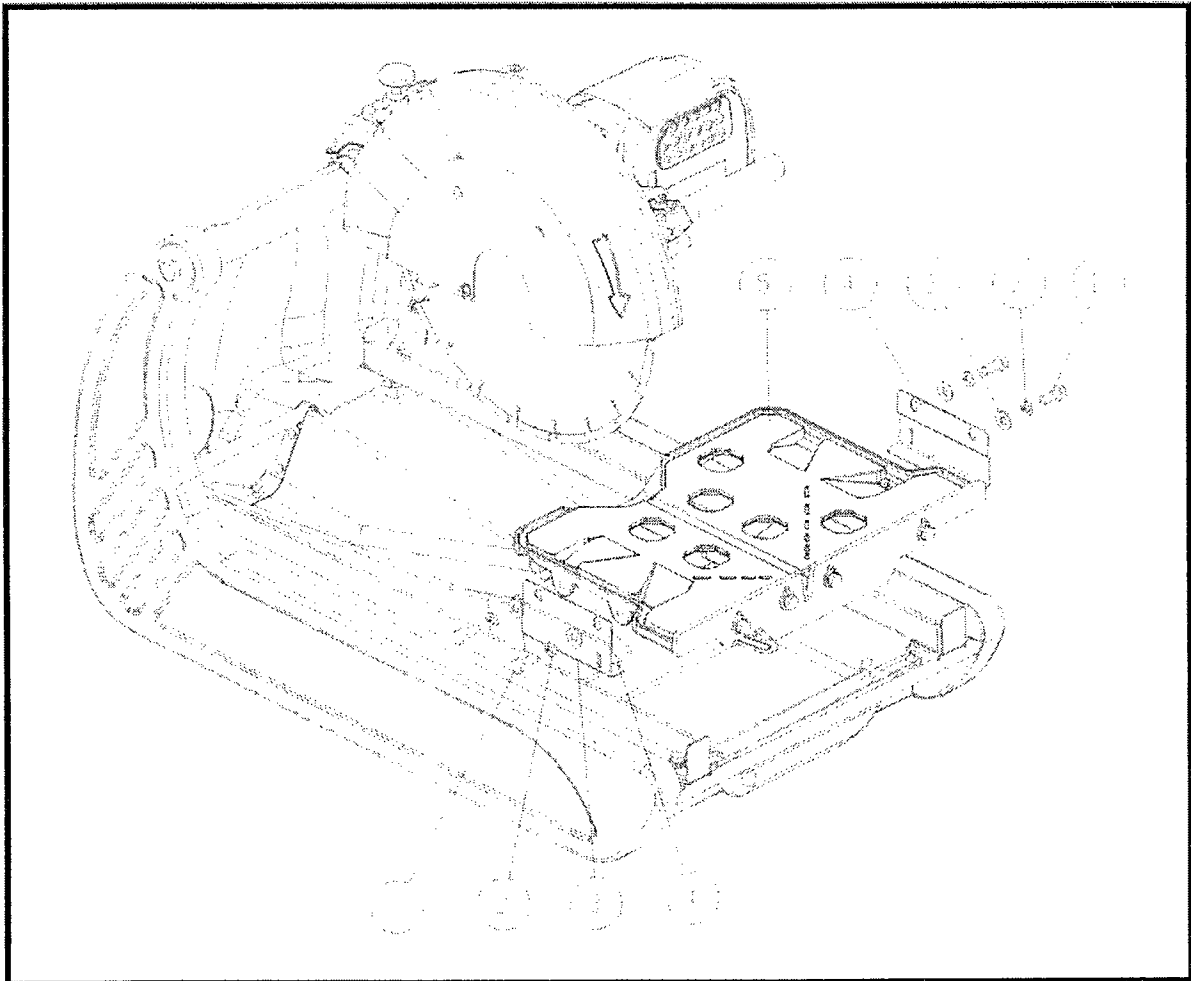
<b>Frame and Dust/Water Collecting Pan</b>		
Item	Description	Part Number
1	Frame BBM	235025
2	Dust/Water Collecting Pan	235026

# BBM307/YBM307 Block Buster Mini Masonry Saw



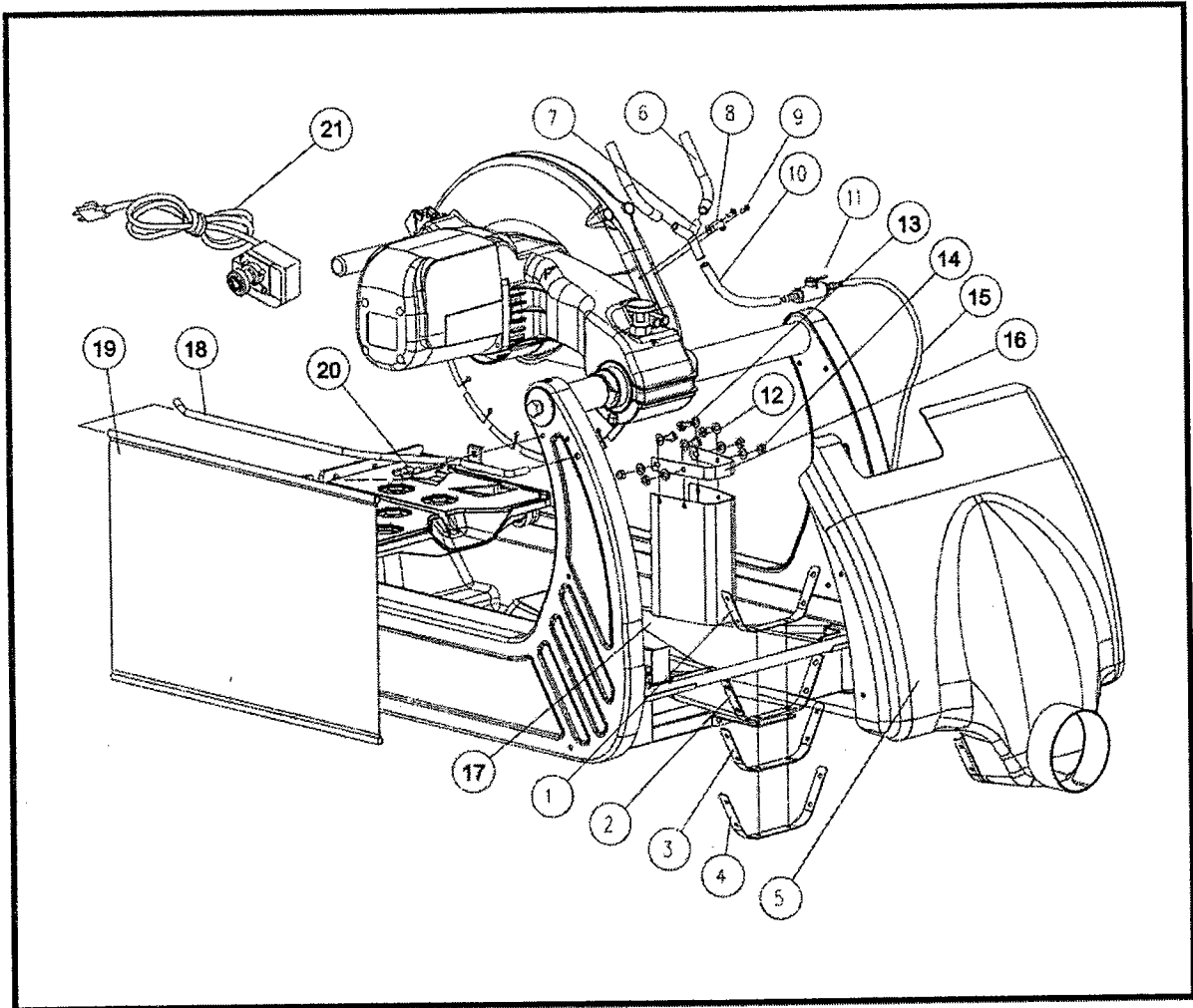
Frame and Dust/Water Collecting Pan		
Item	Description	Part Number
1	Scr M8 x 20 1.25 DIN933 (qty required= 4)	235013
2	Washer Lock M8 DIN127B (qty required= 4)	235012
3	Washer M8 DIN125 Flat (qty required=4)	235029
4	Rail (set of 2)	235030
5	Dust/Water Collecting Pan	235026
6	Frame BBM	235025

# BBM307/YBM307 Block Buster Mini Masonry Saw



<b>Cutting Table Assembly</b>		
Item	Description	Part Number
1	Scr M8 x 16 1.25 DIN933 (qty required= 4)	235031
2	Washer Lock M8 DIN127B (qty required= 4)	235012
3	Washer M8 DIN125 Flat (qty required= 4)	232110
4	Cutting Table Position Bracket (qty required= 2)	235034
5	Conveyor Cart Complete with Wheels	235002

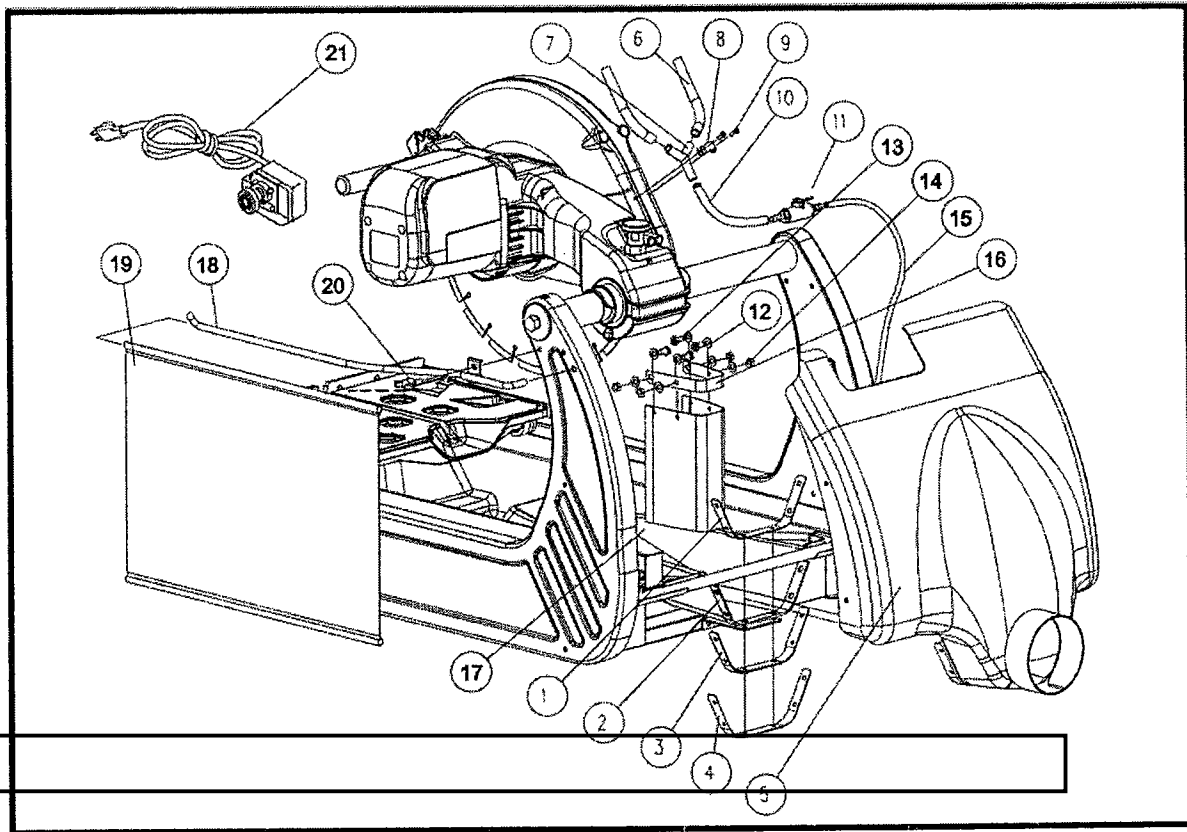
# BBM307/YBM307 Block Buster Mini Masonry Saw



## Optional Splash Guard Assembly NOTE: All Items On This Page Are Optional

Item	Description	Part Number
1	Bracket "U" Shape Small	235035
2	Dust/Water Collecting Plastic Pan	235026
3	Rubber Seal	235036
4	Bracket "U" Shaped Large	235037
5	Dust/Water Splash Guard w/Hardware <b>Use 235011</b>	<del>235095</del> <b>OBS</b>
6	Water Tub Blade Guard (set of 2)	235096
7	Fit Hose "Y" BBM/YBM307	235097
8	Bracket Mount Water System BBM/YBM307	235098

# BBM307/YBM307 Block Buster Mini Masonry Saw



<b>Optional Splash Guard Assembly NOTE: All Items On This Page Are Optional</b>		
Item	Description	Part Number
9	Screw (qty required= 2)	235099
10	Water Tube Short BBM/YBM307	235100
11	Valve BBM307/YBM307	235101
12	Screw Wing M5 x 12 0.8 DIN316 (qty required= 4) Or Screw M5 x 12 0.8 DIN933 (qty required=4+)	235111 235103A
13	Washer Flat M5 DIN125 (qty required= 4)	235065
14	Washer Lock (qty required= 4)	235105
15	Water Tube Long BBM/YBM307	235106
16	Bracket Blade Splash Guard	235107
17	Splash Guard Blade	235108
18	Support Rod Side Splash Guard	235109
19	Side Splash Guard	235110
20	Nut Wing M5 x 12 0.8 DIN316 GT Type B	235111
21	Water Pump	* 233027 or 214169

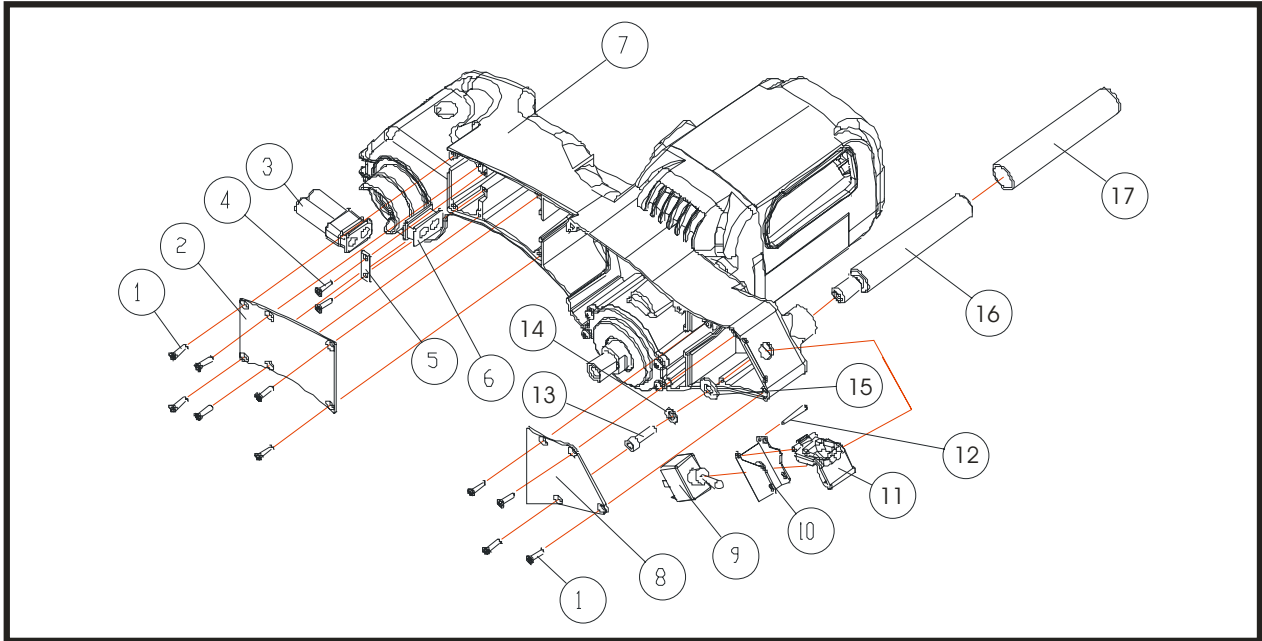
THE  
SUN-GORAN  
ASSOCIATES

\* SCREEN FOR PUMP 233027

233027-1

Water Pump Cable (2 Ft Long, runs from water pump to to unit Head 235141A)

# BBM307 Block Buster Mini Masonry Saw



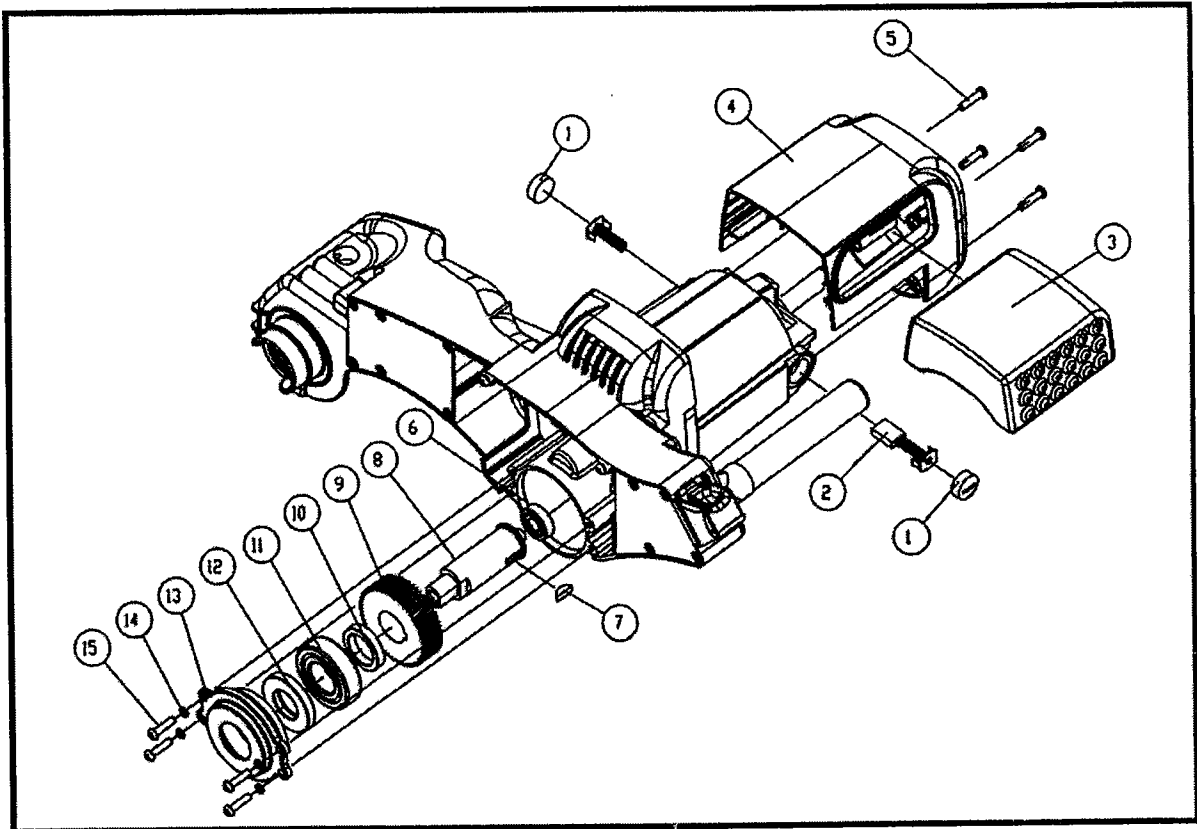
<b>Electrical System</b>			
Item	Description	Part Number	
1	Scr M4 x 10 0.7 DIN933 (qty required= 10)	235039	
2	Air Flow Cover	235040	
3	<b>Grommet Power Cable</b>	<b>235041</b>	
4	<b>Scr M4 x 8 0.7 DIN933 (qty required = 2)</b>	<b>235042</b>	
5	Power Cable Rubber Holding Sleeve	235043	
6	Power Cable Holding Bracket	235044	
7	Cutting Head Casting Only	235045	
8	Power Switch Cover	235046	
*	9	Toggle Switch <b>Replaced by 235165 20A</b>	<del>233003</del> <b>233003 15A</b>
10	Toggle Switch Bracket with cover	235047	
11	<b>Switch Cover</b> <b>INCLUDED WITH ITEM 10</b>	<del>235047-1</del>	
12	<b>Lock Pin</b>	235047-2	
13	<b>Scr M6 x 16 1.0 DIN933 (Not used on BBM307)</b>	<del>235044</del> <b>235048</b>	
14	<b>Washer Lock M6 DIN127B</b> Repl by 300279	<del>235048</del>	
15	<b>Washer M6 DIN125</b> Repl by 27539	235024	
16	<b>Handle</b>	235051	
17	<b>Handle Grip</b>	235052	

**Power Switch Complete includes  
ITEMS 8-12**

**\* Either switch can be used. Toggle  
Switch Boot 235173 is part of Toggle switch**

**Thermal Reset Button 18A      235167**  
**Bracket For Reset Button      235167-A**

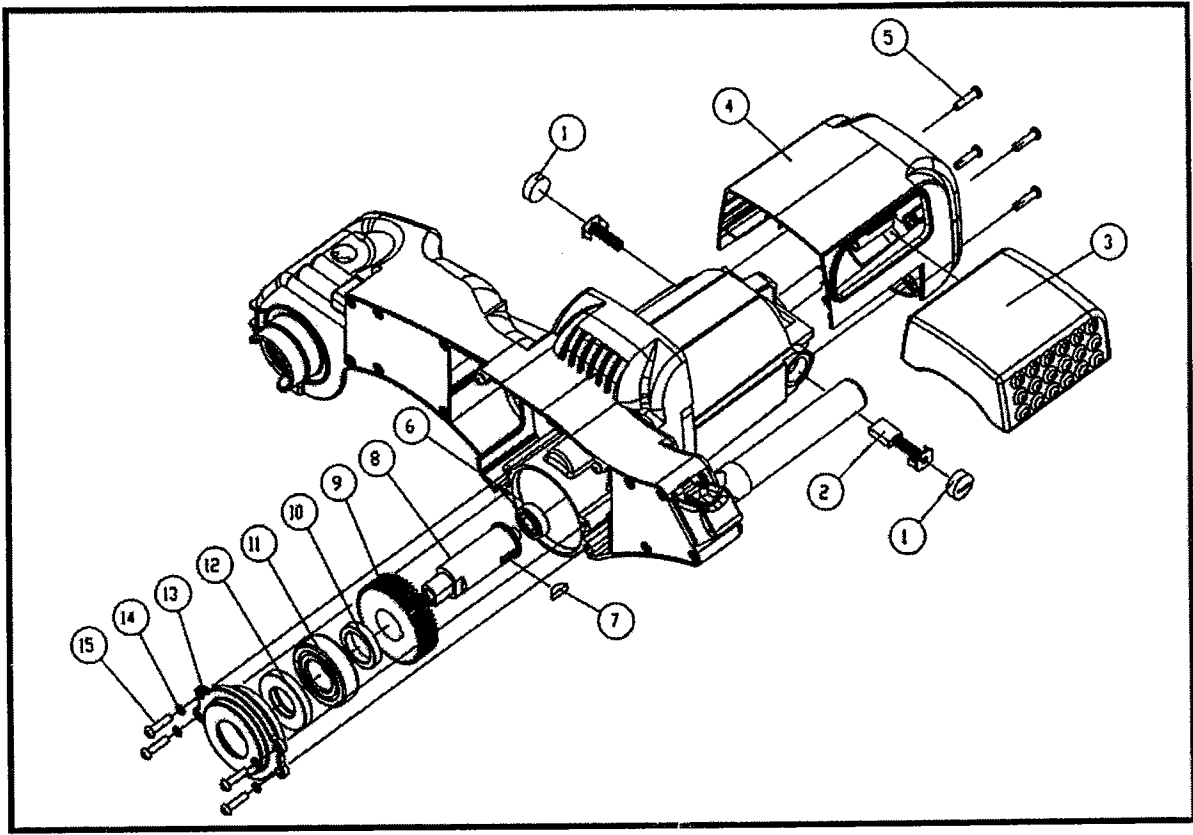
# BBM307/YBM307 Block Buster Mini Masonry Saw



Carbon Brush, Air-Intake, and Blade Shaft		
Item	Description	Part Number
1	Brush Cap (1)	235053
2	Carbon Brushes (2 pcs./set)	235054
3	Air Filter	235055
4	Motor Air In-Take Cover	235056
5	Scr M4 x 16 0.7 DIN933 (qty required= 4)	235057
6	Bearing Blade Shaft Inner	235112
7	Key Woodruff	235113
8	Blade Shaft BBM/YBM307	235114

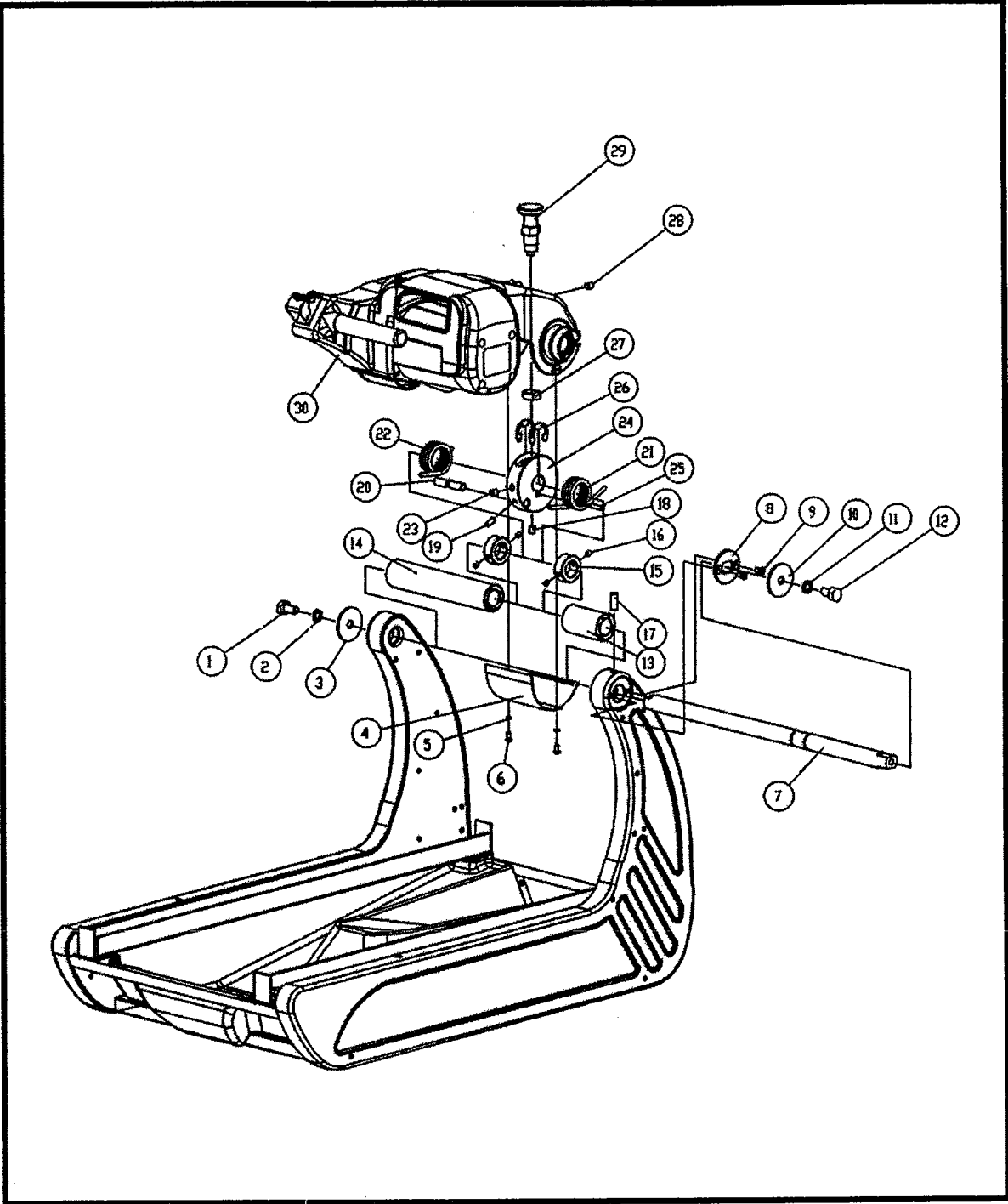


# BBM307/YBM307 Block Buster Mini Masonry Saw



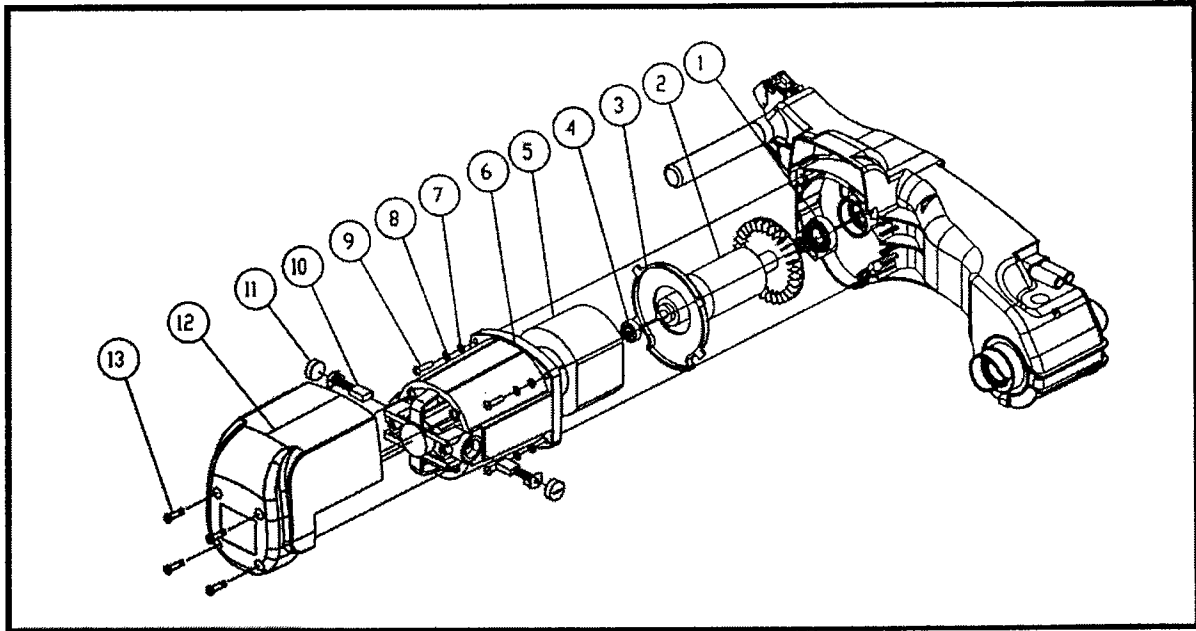
<b>Carbon Brush, Air-Intake, and Blade Shaft</b>		
Item	Description	Part Number
9	Gear Blade Shaft BBM/YBM307	235115
10	Shaft Spacer Inner	235116
11	Bearing Blade Shaft Outer	235117
12	Shaft Spacer Outer	235118
13	Plate Blade Shaft Retaining BBM/YBM307	235119
14	Washer Bld Shaft Retaining (qty required= 4)	<del>235120</del> 235065
15	Scr Motor Retaining Plate (qty required=4)	235121

# BBM307/YBM307 Block Buster Mini Masonry Saw



Cutting Head		
Item	Description	Part Number
1	Scr M10 x 20 1.5 DIN933 (qty required= 1)	235061
2	Washer Lock M10 DIN127B (qty required= 1)	27502
3	Washer M10 x 40 (qty required= 1)	235063
4	Spring Housing Cover	235064
5	Washer M5 DIN125 (qty required= 2)	235065
6	Scr M5 x 10 0.8 DIN933 (qty required= 2)	235066
7	Main Cross Bar	235067
8	Cross Bar Position Bracket	235068
9	Cross Bar Position Lock Pin	235069
10	Washer M10 x 40 (qty required= 1)	235063
11	Washer Lock M10 DIN127B (qty required= 1)	27502
12	Scr M10 x 20 1.5 DIN933 (qty required= 1)	235061
13	Cross Bar Position Tube (Short) 1	235073
14	Cross Bar Position Tub (Long) 2	235074
15	Collar Set Cutting Head BBM/YM307 (qty required= 2)	235075
16	Scr M6 x 10 1.0 Set DIN916 (qty required= 4)	235076
17	Scr M10 x 20 1.5 Set DIN916 (qty required= 1)	235077
18	Scr M8 x 20 1.25 DIN916 (qty required= 1)	235078
19	Scr M6 x 10 1.0 Set DIN916 (qty required= 1)	235076
20	Angle Position Lock Pin	235080
21	Tension Spring Right Side	235081
22	Tension Spring Left Side	235082
23	Scr M8 x 20 1.25 DIN916 (qty required= 1)	235078
24	Cutting Head Angle Main Bracket	235084
25	Key 5mm x 5mm x 24 mm (qty required= 1)	235085
26	C Ring Ø19mm (qty required= 2)	235086
27	Angle Adjustment Lock Nut	235087
28	Scr M6 x 10 1.0 Set DIN916 (qty required= 1)	235076
29	Angle Adjustment Lock Pin <b>M16 x 1.5 Thread ( Metric )</b>	235089
30	Cutting Head Complete BBM/YBM307	<del>235090</del> <b>OBS</b>

# BBM307/YBM307 Block Buster Mini Masonry Saw



<b>Motor Assembly</b>		
Item	Description	Part Number
1	Bearing Motor Inner	235122
2	Armature BBM/YBM307 <b>DO NOT SELL SEPARATELY</b>	<del>235123</del>
3	Motor Retaining Plate	235124
4	Bearing Motor Outer	235112
5	Field Windings BBM/YBM307	235126
6	Motor Housing (No longer available, part of Motor Repl Kit)	<del>235127</del>
7	Washer Flat (qty required= 4)	235104
8	Washer Lock (qty required= 4)	235105
9	Screw Motor Housing (qty required= 4)	235130
10	Carbon Brushes (2 pcs./set)	235054
11	Brush Cap (1)	235053
12	Motor Air In- Take Cover	235056
13	Scr M4 x 16 0.7 DIN933 (qty required= 4)	235057

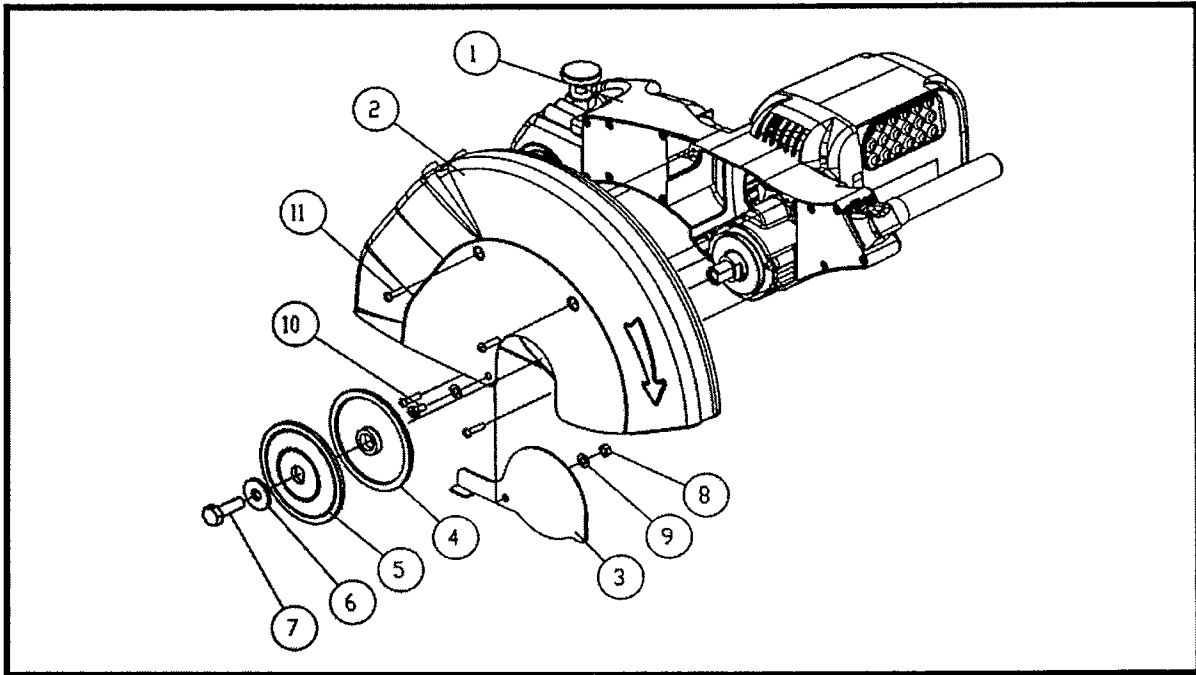
**MOTOR REPLACEMENT KIT 235162**

**INCLUDES ITEMS 1,2,4,5,6, AND 10**

**Generator Power Needed**

**4500W Minimum**

# BBM307/YBM307 Block Buster Mini Masonry Saw

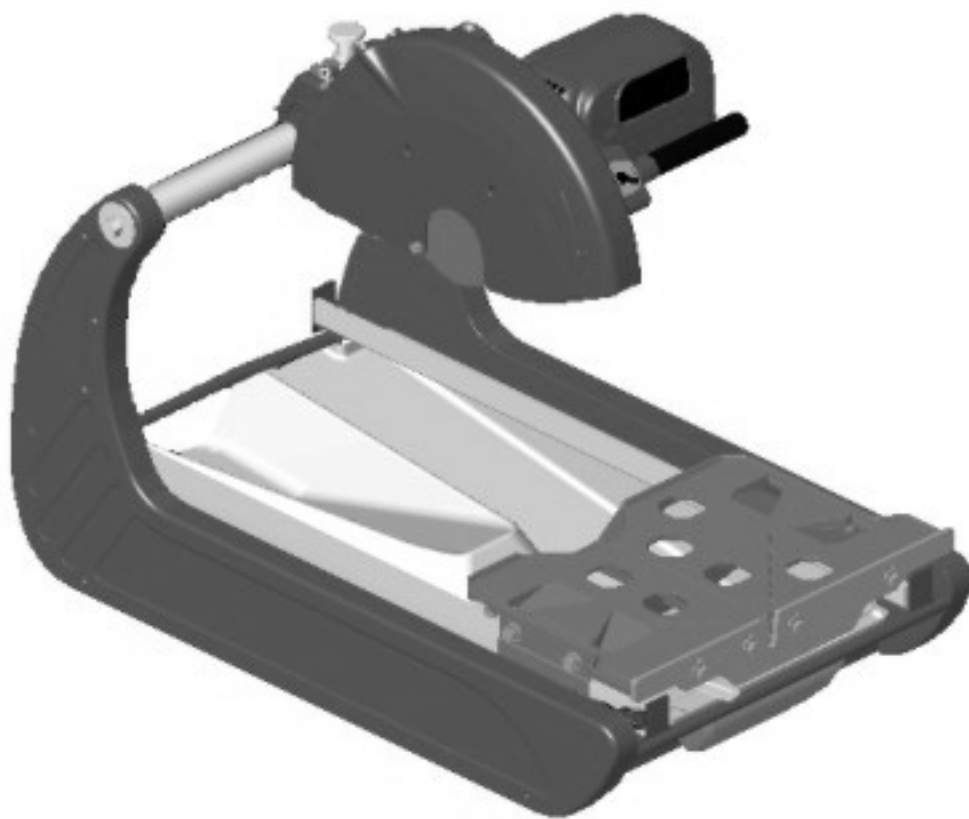


<b>Blade Guard Assembly</b>		
Item	Description	Part Number
1	Cutting Head Complete BBM/YBM307	235090
2	Blade Guard BBM/YBM307	235131
3	Arbor Cover BBM/YBM307	235132
4	Tight Collar BBM/YBM307;	235133
5	Loose Collar BBM/YMB307	235134
6	Washer M10 x 40 x 3 Blade Shaft	235063
7	Scr M10 x 20 1.5 DIN933 Left Hand Thread	235142
8	Nut M6 DIN985 Lock	235136
9	Washer M6 DIN125	235024
10	Scr M6 x 10 1.0 DIN933	235137
11	Scr M4 x 20 0.7 DIN7985A Pan HD Phillip	235138

**COVER SCREW PLASTIC PLUG SIDE OF BLD GUARD 250731**

# Chop Saw Motor Replacement Kit Instructions

Nov 2008



# Cutting Angle Spring Lock Pin

The BBM307/YBM307 Block Buster Mini Masonry saw is designed with three different cutting heights for jam cutting, a moving head for chop (or plunge cutting), and a moving cart combined with the moving head for step cutting to help make any cutting task easier.

Before adjusting the cutting height always disconnect the electrical power supply. To adjust the BBM307's fixed cutting position, pull up on the Angle Lock Pin (see Figure 1-1: Angle Lock Pin), move the head to the new position, release the Angle Lock Pin, and rotate the cutting head up/down until the Angle Lock Pin locks into position (lowest position for cutting thru bricks, the middle position for cutting medium size material, and the upper position is for cutting block.) (See figure 1-2: Angle Locking Position).

Head Position	Application
Fixed Lowest	Jam Cutting Bricks
Fixed Middle	Jam Cutting Medium Size Bricks
Fixed Upper	Jam Cutting Block
Pivoting	Chop or Plunge Cutting
Pivoting Head with Moving Table	Step Cutting

To operate the BBM307 Block Buster Mini as a chop or plunge saw: pull up on the Angle Lock Pin, rotate 90 degrees, and release. Now the cutting head can be rotated by pulling up or pushing down on the cutting head handle. When not in use, always lock the head into one of the three cutting height positions.

Do not install the blade until it is time to use the saw!

This machine is designed for the use with steel center diamond blades

Lock the cutting head in place before transporting the BBM307

ANSI regulations prohibit the transportation of any concrete saw with the blade installed!

Do not lift the saw by the cutting head. This may result in injury or damage to the machine.

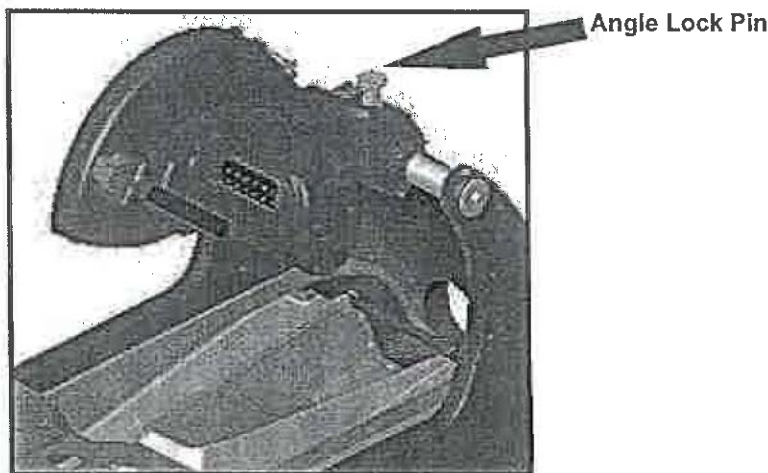


Figure 1-1: Angle Lock Pin



Figure 1-2: Angle Locking Position

**Grant, Bob E.**

---

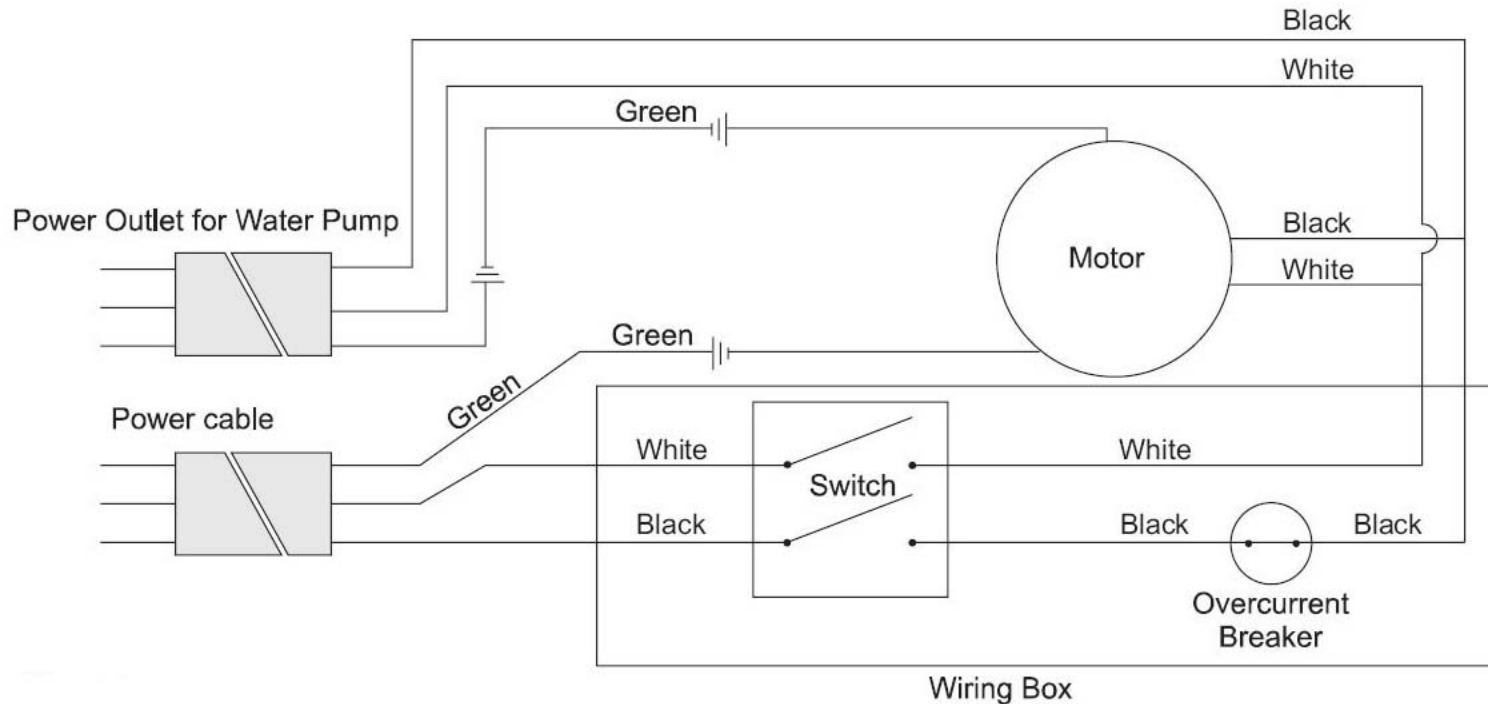
**From:** Edwards, Paul S.  
**Sent:** Wednesday, April 25, 2012 3:13 PM  
**To:** Miller, Bryan K.  
**Cc:** pmathiew@williamsequipment.com  
**Subject:** RE: BBM307

## WIRING DIAGRAMS

Hello Bryan,

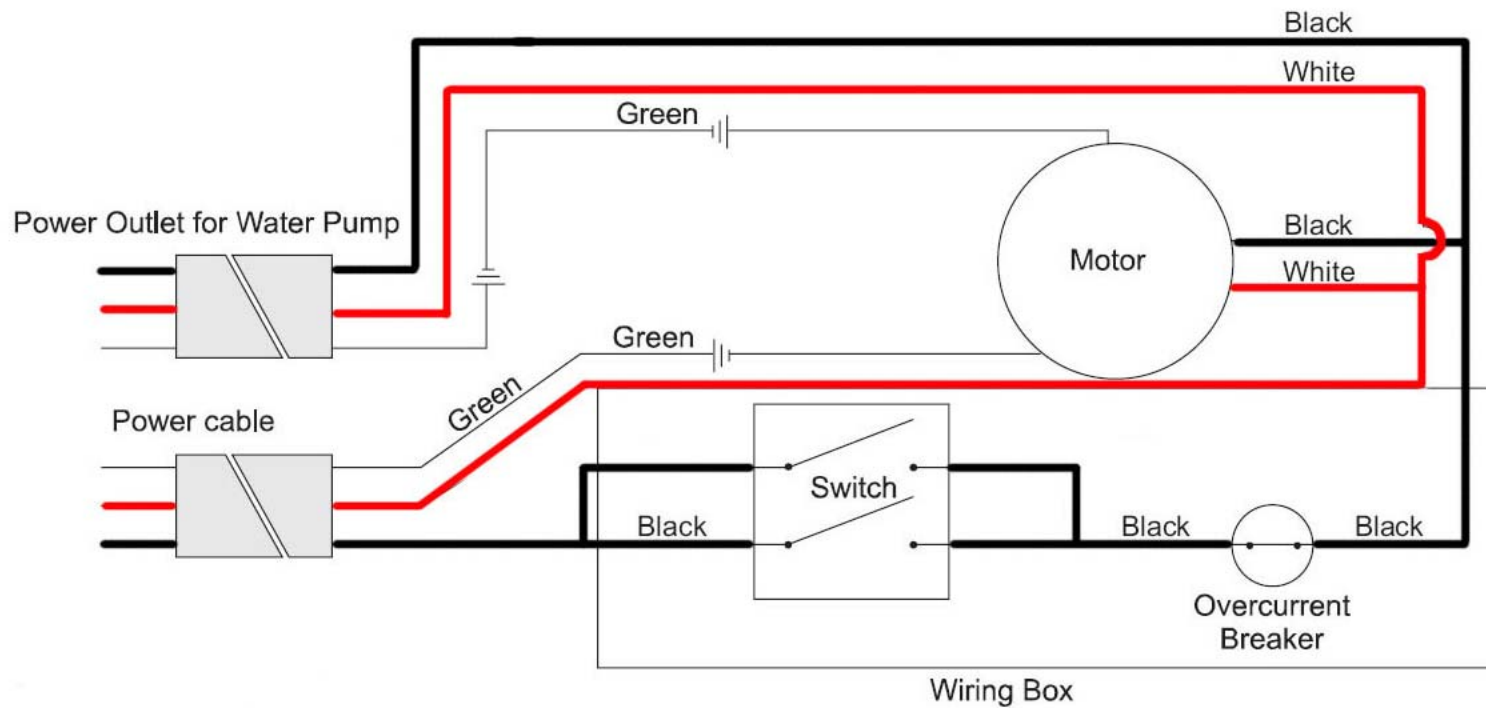
I have included the two wiring diagrams that have been used for BBM307s going back to the first. Either wiring system can be used with the older Nylon Motor Housing or the New Aluminum Motor Housing motors. The difference is the wiring shown below for the Aluminum Motor Housing will create a lower amperage load on the On/Off Switch (cuts the load the switch sees in half).

The following diagram is for the older Nylon motor housings NOTE: Earlier Nylon motor units did not have the Over Current Breaker (Thermal Reset).



The following is the current Aluminum Motor Housing diagram





Regards,

Paul Edwards

---

**From:** Miller, Bryan K.  
**Sent:** Wednesday, April 25, 2012 3:59 PM  
**To:** Edwards, Paul S.  
**Cc:** [pmathiew@williamsequipment.com](mailto:pmathiew@williamsequipment.com)  
**Subject:** BBM307

Paul

This customer is looking of a switch wiring diagram for the BBM307. He thinks it might be wired in wrong and would like to see a diagram.

Do you have something you can send us?

Best Regards

*Bryan Miller*

Customer Service

Norton Construction Products/DIY

(P)800 554 8003 (F)800 443 1092

[www.nortonconstructionproducts.com](http://www.nortonconstructionproducts.com)

[www.nortonconsumer.com](http://www.nortonconsumer.com)

[www.nortonprocleaning.com](http://www.nortonprocleaning.com)

## BBM & YBM INSTRUCTIONS [May 2004]

### Adjusting the Cutting Head Depth

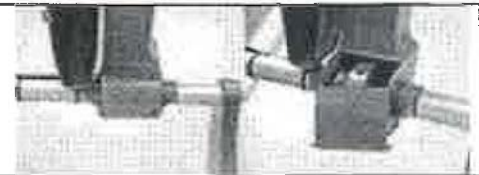
1. Pull up and twist the pivot lock knob to allow the cutting head to rest in the full upright and raised position. Do not lock the head in position. Make sure the depth lock is disengaged so that the cutting head pivots freely and is as far up as possible.



2. Using a 5mm Allen wrench, loosen the set screw on the motor side of the pivot bar. Do not remove the set screw.
3. Remove the 17mm hex head cap screw on the motor side of the cutting head pivot bar.
4. Remove the Phillips head screws and pull the washer out to expose the end of the pivot bar.



5. Using a Phillips head screw driver, remove the two screws holding the cover located under the back of the cutting head directly below the pivot lock.



6. Using a 4mm Allen wrench, loosen the two set screws on the cutting head main angle bracket. Only loosen the two 4mm screws located above and below the torsion spring dowel pin.



7. Push the cutting head to the highest possible raised position and then tighten the heck out of the two 4mm set screws on the cutting head main angle bracket. Tighten the bottom set screw first then tighten the set screw facing the front of the saw. *These set screws must be tightened until they "scream" or the cutting head will slip when the operator presses down on the handle.*

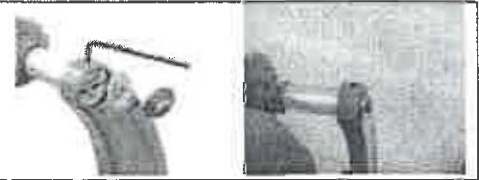


**NEVER ATTEMPT ANY OF THE INSTRUCTIONS WITH POWER CONNECTED TO SAW!**

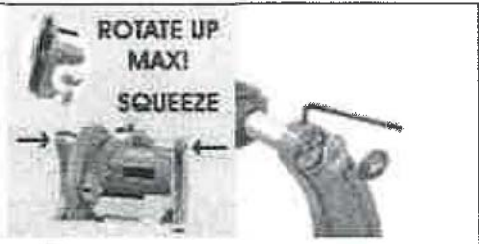
# BBM & YBM INSTRUCTIONS [May 2004]

## Adjusting the Cutting Head Depth

8. Insert the washer with the two alignment holes into the slot of the upright on the motor side. Insert the two Phillips head screws and tighten. *Lifting up on the handle will ease tension on the Phillips head screws while tightening.*



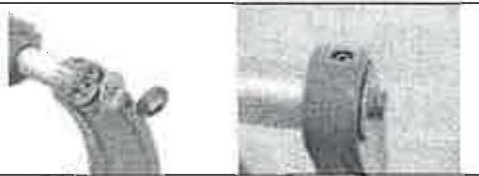
9. Push the cutting head to the highest possible raised position. Squeeze and hold the two uprights "snug" against the aluminum pivot bar cover tubes and then tighten the 5mm set screw on the top of the upright on the motor side. Make sure the cutting head pivots as far up as possible and make sure to tighten the 5mm set screw until it screams.



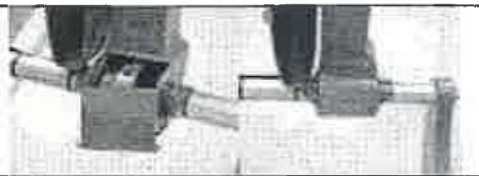
10. Place the blade on the spindle and pivot the head down as far as possible. If the blade makes contact with the table, repeat the procedure and make sure the head remains in the maximum possible raised position before tightening any of the set screws.



11. Insert the 17mm hex head cap screw, lockwasher, and washer assembly into the hole in the upright on the motor side and then tighten the cap screw.



12. Position the torsion spring cover and use a Phillips head screw driver to tighten the screws that hold the cover in place.



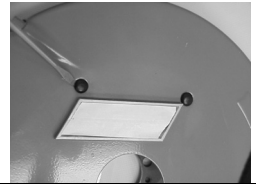
**COMPLETE**

NEVER ATTEMPT ANY OF THE INSTRUCTIONS WITH POWER CONNECTED TO SAW!

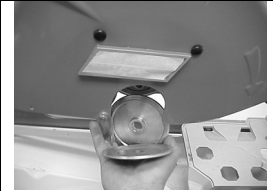
## DISCONNECT POWER TO THE SAW!

### Removing the Motor

1. Remove the two plastic plugs on the blade guard to expose the two mounting screws located inside the blade guard.



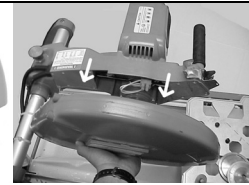
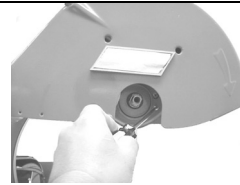
2. Using a 17mm wrench, turn the blade shaft screw clockwise and take the screw and washer out of the end of the shaft. With the blade shaft screw and washer removed, pull both blade flanges outward and off the end of the blade shaft.



3. Insert a Phillips head screw driver into the blade guard where the plastic plugs were and remove the two screws holding the blade guard.



4. From under the blade guard, remove the two screws located at the bottom of the blade shaft housing casting and pull the blade guard outward and off the blade shaft casting housing.



5. Remove the two twist-on connectors from the motor wires. Both should be visible upon remove the blade guard.

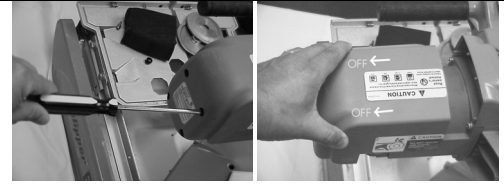


6. Remove the air filter.

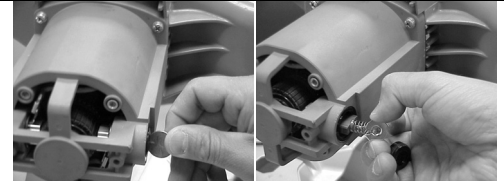


## Removing the Motor [Continued]

7. Using a Phillips head screw driver, remove the four screws in the back of the plastic motor air intake cover and slide the housing outward and off of the motor housing.



8. Using a coin or a wide blade screw driver, remove the plastic brush cap and carefully pull the carbon brush out of the motor housing. Remove brushes on both sides before attempting to pull the motor housing off of the armature.



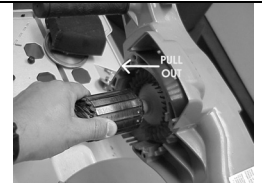
9. Using a Phillips head screw driver, remove the four screws at the front of the motor housing and carefully slide the motor housing outward and off the armature.



10. Pull the plastic baffle out by slipping it along the armature.



11. Grab the armature and pull the armature out of the motor housing. Remember to pull the armature straight out not at an angle. Make sure your hands are clean to prevent leaving oil deposits on the armature.



If the armature does not pull out of the housing, it will have to be tapped out from the other end. Remove the gear housing cover from the blade shaft side of the saw by removing the two mounting screws. Look inside to locate the helical gear on the inside housing. This helical gear is part of the armature shaft. If you were to spin the armature the gear will spin as well. Place a wide blade screw driver on top of the helical gear and use a rubber mallet to tap the armature out. Once the armature is removed, install the housing cover back on to the gear housing.

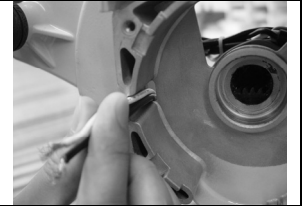


## Installing the new Motor

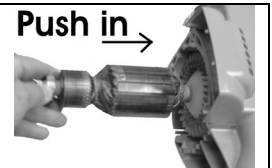
1. Take two wires, matching the wire colors in the cutting head. Using the original twist-on connector's mate the wires together. Wrap black electrical tap around each connector, and the wire it is mating, to improve insulation and obtain a secure connection.



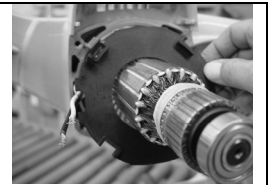
2. Slip both extension wires through a hole found near where the armature shaft (helical gear) was inserted through.



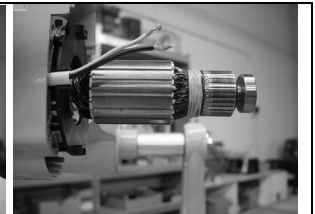
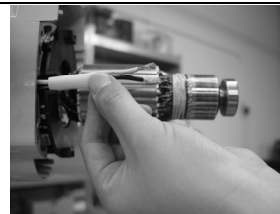
3. Reinstall the armature back onto the cutting head, with the fan side facing towards the head. Mind the extension wires.



4. Reinsert the baffle onto the armature. There will be a pathway on one edge of the baffle for wires to pass through. Align that pathway with the hole where the extension wires were pulled through. Allow the extension wires to sit on that pathway as you slide the baffle on.



5. Slip both extension wires through the sleeve found within the motor or in the replacement kit. Push the sleeve all the way down the wires.



6. Insert the supplied "wave washer" into the bearing seat located at the bottom of the motor housing.



7. With the wire access panel facing the plunge handle, slide the new motor housing carefully onto the armature. Mind the wave washer that was just placed in the housing. Insert the extension wires into the motor housing.

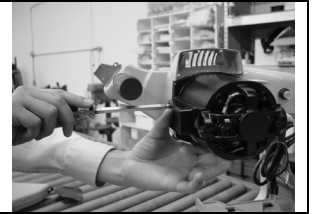


## Installing the Motor [Continued]

8. Connect the two extension wires to the corresponding wires in the new aluminum housing. Use “twist-on connectors” to mate the wires and once again wrap each connector, and the wires it’s mating, with electrical tape.



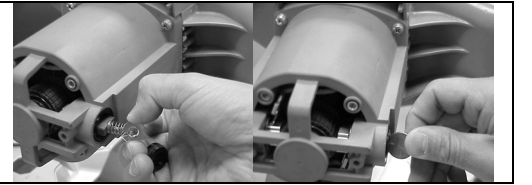
9. Close the junction box and fasten it securely with a Philips screw driver.



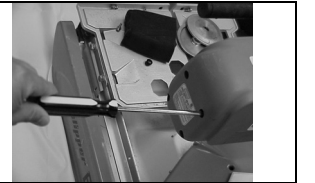
10. Secure the new motor housing using the original four screws. The screws should be hand tight.



11. Re-install the brushes and the brush caps. Do not over-tighten the caps or they will break.



12. Slide the motor air intake cover over the motor housing as before and secure it using the original four screws. The screws should be hand tight.



13. Re-install the air filter. Do not operate the machine without the air filter.



14. To reassemble the blade guard, follow ‘Removing the Motor’ steps 1 through 4 in reverse order.



Motor replacement complete