

SYSTEM DESCRIPTION

Showertec Linear is a range of linear channels, 100% made in Italy, for floor-level, barrier-free showers. The channel is made of three elements: **Body** (channel body), **Cover** (removable and adjustable grids), and **Frame** (optional). This feature boosts aesthetic combinations, as Cover and Frame are two separate elements, which can be combined. To complete the system, you'll find the **Tray that is pre-sloped (2% slope)**, available in several sizes. Ready to be tiled.

SHOWERTEC LINEAR - STL-C*

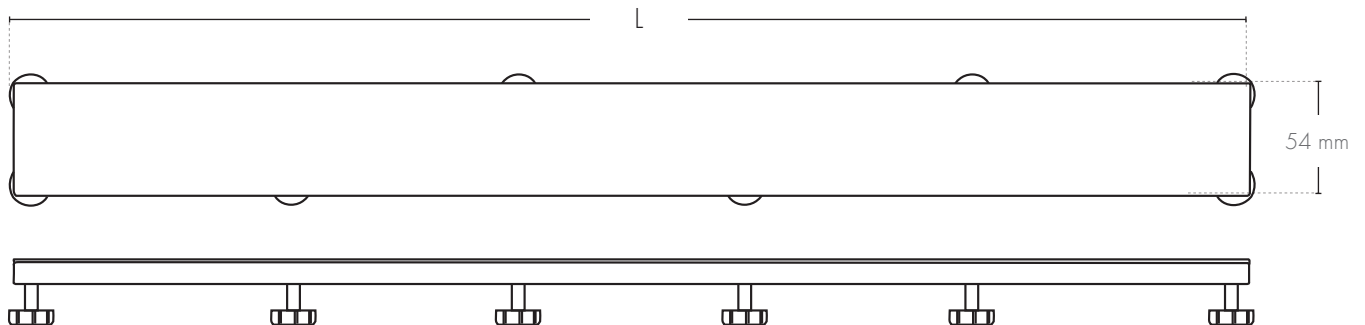
PRODUCT DESCRIPTION



Cover Metal STL-C* cover is the grid of the Showertec Linear system. The base is available in **12** high-strength **ALU+** Aluminum versions and **4** **AISI 316 stainless steel** versions. It is equipped with adjustable feet for proper leveling of the Cover with the surrounding flooring. The system's versatility in regulation allows the installation of the surrounding covering with tiles from **6 to 20 mm** thick. The cover's pedestal rest on the support areas of the **STL-B*** channel body: their position is conceived to increase the resistance to the Cover's loads without reducing the system's drain capacity.

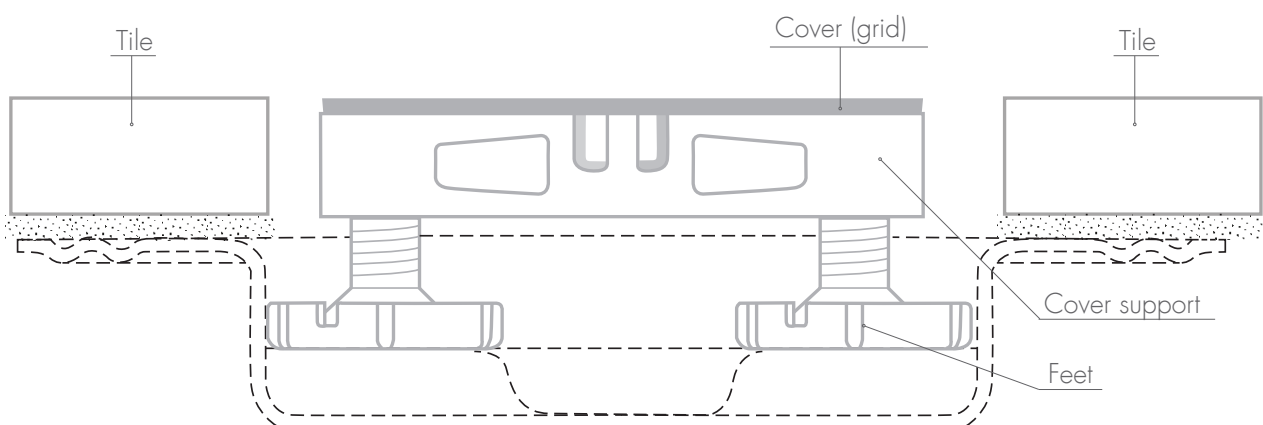
The **STL-C*** cover is designed for linear channels in the Showertec Linear STL system, available in sizes 600, 700, 800, 900, 1000, and 1200 mm.

TECHNICAL DRAWINGS STL-C*



STL-C*, Cover Metal

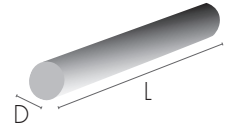
L = Available lengths: 600 mm / 700 mm / 800 mm / 900 mm / 1000 mm / 1200 mm



STL-C* CODE - STAINLESS STEEL AISI 316

Article	Length (mm)	Description	pc ■	Pkg DxD (mm)
STL-C 600 *	600	Cover in Stainless Steel AISI 316- *ILM/*ISM/*IXM/*IC	1 pc	ø90 x 630
STL-C 700 *	700	Cover in Stainless Steel AISI 316- *ILM/*ISM/*IXM/*IC	1 pc	ø90 x 730
STL-C 800 *	800	Cover in Stainless Steel AISI 316- *ILM/*ISM/*IXM/*IC	1 pc	ø90 x 830
STL-C 900 *	900	Cover in Stainless Steel AISI 316- *ILM/*ISM/*IXM/*IC	1 pc	ø90 x 930
STL-C 1000 *	1000	Cover in Stainless Steel AISI 316- *ILM/*ISM/*IXM/*IC	1 pc	ø90 x 1030
STL-C 1200 *	1200	Cover in Stainless Steel AISI 316- *ILM/*ISM/*IXM/*IC	1 pc	ø90 x 1230

Available finishes: *ILM = Polished / *ISM = Brushed / *IXM = Sanded / *IC = Chrome



STL-C* CODE - ALUMINUM ALU+

ANODIZED ALUMINUM ALU+

Article	Length (mm)	Description	pc ■	Pkg DxD (mm)
STL-C 600 *	600	Cover in Anodized Aluminum Alu+ - *AT/*AR/*AO	1 pc	ø90 x 630
STL-C 700 *	700	Cover in Anodized Aluminum Alu+ - *AT/*AR/*AO	1 pc	ø90 x 730
STL-C 800 *	800	Cover in Anodized Aluminum Alu+ - *AT/*AR/*AO	1 pc	ø90 x 830
STL-C 900 *	900	Cover in Anodized Aluminum Alu+ - *AT/*AR/*AO	1 pc	ø90 x 930
STL-C 1000 *	1000	Cover in Anodized Aluminum Alu+ - *AT/*AR/*AO	1 pc	ø90 x 1030
STL-C 1200 *	1200	Cover in Anodized Aluminum Alu+ - *AT/*AR/*AO	1 pc	ø90 x 1230

Finishes: *AT = Titan ■ / *AR = Copper ■ / *AO = Gold ■

BRIGHT POLISHED BRUSHED ALUMINUM ALU+

Article	Length (mm)	Description	pc ■	Pkg DxD (mm)
STL-C 600 *	600	Cover in Bright polished Brushed Alu. *ASSB/*ATSB/*ARSB/*AOSB	1 pc	ø90 x 630
STL-C 700 *	700	Cover in Bright polished Brushed Alu. *ASSB/*ATSB/*ARSB/*AOSB	1 pc	ø90 x 730
STL-C 800 *	800	Cover in Bright polished Brushed Alu. *ASSB/*ATSB/*ARSB/*AOSB	1 pc	ø90 x 830
STL-C 900 *	900	Cover in Bright polished Brushed Alu. *ASSB/*ATSB/*ARSB/*AOSB	1 pc	ø90 x 930
STL-C 1000 *	1000	Cover in Bright polished Brushed Alu. *ASSB/*ATSB/*ARSB/*AOSB	1 pc	ø90 x 1030
STL-C 1200 *	1200	Cover in Bright polished Brushed Alu. *ASSB/*ATSB/*ARSB/*AOSB	1 pc	ø90 x 1230

Finishes: *ASSB = Chrome ■ / *ATSB = Titan ■ / *ARSB = Copper ■ / *AOSB = Gold ■

BRIGHT POLISHED ALUMINUM ALU+

Article	Length (mm)	Description	pc ■	Pkg DxD (mm)
STL-C 600 *	600	Cover in Bright polished Aluminum Alu+ - *AORB	1 pc	ø90 x 630
STL-C 700 *	700	Cover in Bright polished Aluminum Alu+ - *AORB	1 pc	ø90 x 730
STL-C 800 *	800	Cover in Bright polished Aluminum Alu+ - *AORB	1 pc	ø90 x 830
STL-C 900 *	900	Cover in Bright polished Aluminum Alu+ - *AORB	1 pc	ø90 x 930
STL-C 1000 *	1000	Cover in Bright polished Aluminum Alu+ - *AORB	1 pc	ø90 x 1030
STL-C 1200 *	1200	Cover in Bright polished Aluminum Alu+ - *AORB	1 pc	ø90 x 1230

Finishes: *AORB = Pink Gold ■

BRUSHED ALUMINUM ALU+

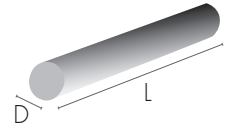
Article	Length (mm)	Description	pc ■	Pkg DxD (mm)
STL-C 600 *	600	Cover in Brushed Aluminum Alu+ - *AGRS/*AMSB	1 pc	ø90 x 630
STL-C 700 *	700	Cover in Brushed Aluminum Alu+ - *AGRS/*AMSB	1 pc	ø90 x 730
STL-C 800 *	800	Cover in Brushed Aluminum Alu+ - *AGRS/*AMSB	1 pc	ø90 x 830
STL-C 900 *	900	Cover in Brushed Aluminum Alu+ - *AGRS/*AMSB	1 pc	ø90 x 930
STL-C 1000 *	1000	Cover in Brushed Aluminum Alu+ - *AGRS/*AMSB	1 pc	ø90 x 1030
STL-C 1200 *	1200	Cover in Brushed Aluminum Alu+ - *AGRS/*AMSB	1 pc	ø90 x 1230

Finishes: *AGRS = Graphite ■ / *AMSB = Antique Bronze ■

POWDER COATED ALUMINUM ALU+

Article	Length (mm)	Description	pc ■	Pkg DxDL (mm)
STL-C 600 *	600	Cover in Powder coated Aluminum Alu+ -*AM11/*A65	1 pc	ø90 x 630
STL-C 700 *	700	Cover in Powder coated Aluminum Alu+ -*AM11/*A65	1 pc	ø90 x 730
STL-C 800 *	800	Cover in Powder coated Aluminum Alu+ -*AM11/*A65	1 pc	ø90 x 830
STL-C 900 *	900	Cover in Powder coated Aluminum Alu+ -*AM11/*A65	1 pc	ø90 x 930
STL-C 1000 *	1000	Cover in Powder coated Aluminum Alu+ -*AM11/*A65	1 pc	ø90 x 1030
STL-C 1200 *	1200	Cover in Powder coated Aluminum Alu+ -*AM11/*A65	1 pc	ø90 x 1230

Finishes: *AM11 = Matt White  / *A65 = Embossed Matt Black 



TECHNICAL FEATURES

Class K3: load resistance of the cover >300 kg, according to EN1253 standard

AASS test: 1000 hours salt spray test with acetic acid in compliance with ISO9227:2012

COVER METAL FEATURES AND ADVANTAGES



The covers (grids) are made in **AISI 316 stainless steel**, suitable for environments requiring high-performance materials.



The Aluminum covers (grids) are made with **ALU+ treatment**, which guarantees high corrosion resistance and is commonly used in the naval sector.



Wide range of **finishes** and **colors** for the covers (grids):
4 stainless Steel;
12 ALU+ aluminum.



Patented feet to easily adjust the height of the cover.



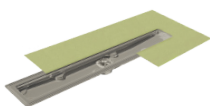
Metal hook supplied for an easy lifting of the cover.

OTHER COMPONENTS

BODY, FRAME AND TRAY

BODY

- Horizontal drain and siphon
- Vertical drain



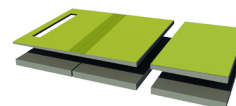
FRAME

- Wall frame
- 13 finishes in Steel and Alu+



TRAY

- Sloped trays
- Extensions
- Risers
- Ramp



Profilitec S.p.A.
 Via Scotte, 3 - 36033 Isola Vicentina (Vicenza), ITALY
 Tel: +39 0444 268311
 e-mail: profilitec@profilitec.com (ITA)

Profilitec Corp.
 472 Meeting Street, Suite C, No. 301 -
 Charleston, SC 29403, USA
 Ph: +1 855 290 9591
 e-mail: customerservice@profilitec.com