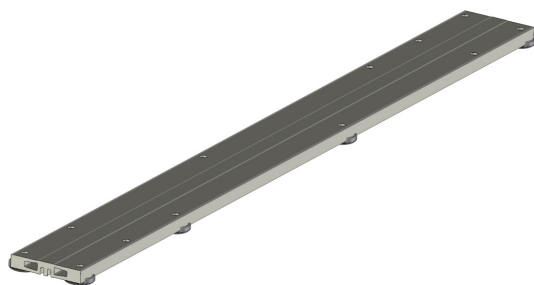


SYSTEM DESCRIPTION

Showertec Linear is a range of linear channels, 100% made in Italy, for floor-level, barrier-free showers. The channel is made of three elements: **Body** (channel body), **Cover** (removable and adjustable grids), and **Frame** (optional). This feature boosts aesthetic combinations, as Cover and Frame are two separate elements, which can be combined. To complete the system, you'll find the **Tray that is pre-sloped (2% slope)**, available in several sizes. Ready to be tiled.

SHOWERTEC LINEAR - STL-CT

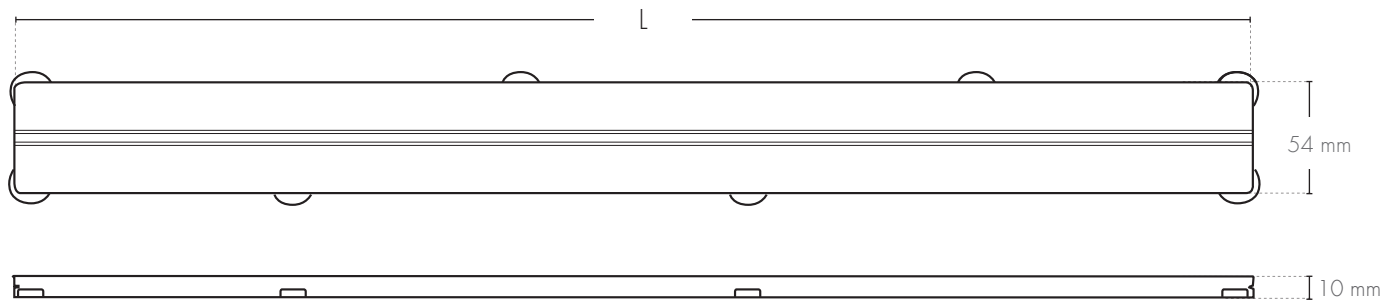
PRODUCT DESCRIPTION



Cover invisible STL-CT is a tileable grid with "invisible" effect. The upper part of the aluminum cover is coated with a specific non-woven fabric that facilitates gluing the tile. The system is equipped with plastic Plastic tab, conceived to rest on the support inlets of the **STL-B* channel body**; they guarantee uniform support to the cover, increasing the system's stability and load resistance. The support areas positioning allows for the smooth flow of water.

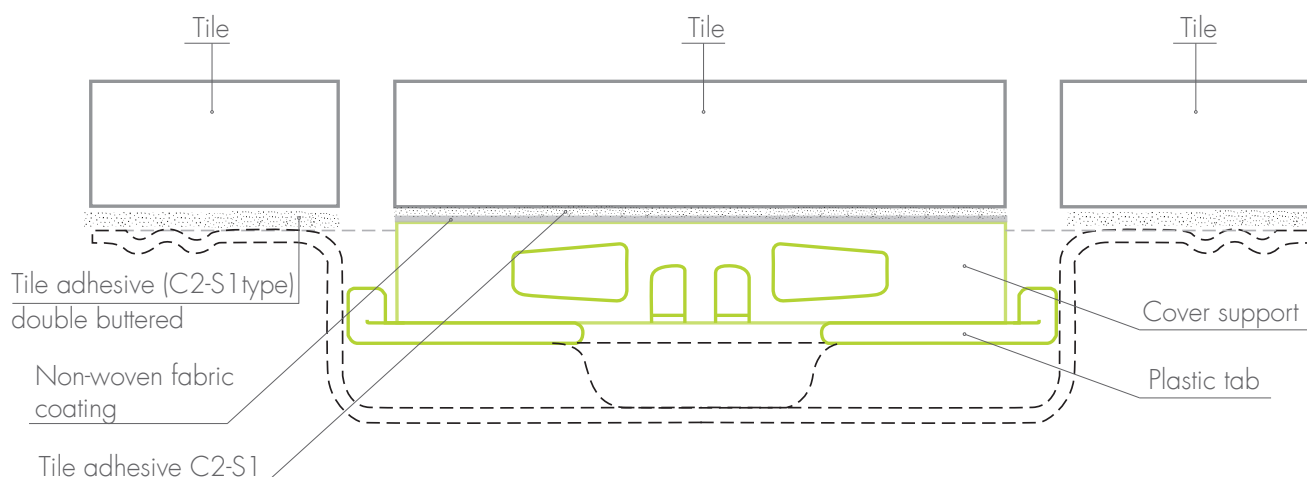
The **STL-CT** cover is designed for linear channels in the Showertec Linear STL system, available in sizes **600, 700, 800, 900, 1000, and 1200 mm**.

TECHNICAL DRAWINGS STL-CT



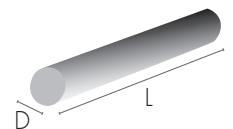
STL-CT, seamless tiled effect cover

L = Available lengths: 600 mm / 700 mm / 800 mm / 900 mm / 1000 mm / 1200 mm



CODE STL-CT

| Article | Length (mm) | Description | pc ■ | Pkg DxL (mm) |
|-------------|-------------|--------------------------------------|------|--------------|
| STL-CT 600 | 600 | Fully tileable seamless Cover | 1 pc | ø90 x 630 |
| STL-CT 700 | 700 | Fully tileable seamless Cover | 1 pc | ø90 x 730 |
| STL-CT 800 | 800 | Fully tileable seamless Cover | 1 pc | ø90 x 830 |
| STL-CT 900 | 900 | Fully tileable seamless Cover | 1 pc | ø90 x 930 |
| STL-CT 1000 | 1000 | Fully tileable seamless Cover | 1 pc | ø90 x 1030 |
| STL-CT 1200 | 1200 | Fully tileable seamless Cover | 1 pc | ø90 x 1230 |



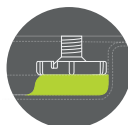
TECHNICAL FEATURES

Class K3: load resistance of the cover >300 kg, according to EN1253 standard
AASS test: 1000 hours salt spray test with acetic acid in compliance with ISO9227:2012

COVER INVISIBLE FEATURES AND ADVANTAGES



The Aluminum covers are made with **ALU+ treatment**, which guarantees high corrosion resistance and is commonly used in the naval sector.



The bottom of the channel presents **support areas** for the cover's plastic tab: their position is conceived to increase the resistance to the cover's loads without reducing the system's water flow capacity.



Minimalist essentiality with the channel body fully integrated into the floor

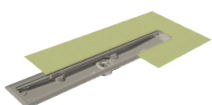


Tool supplied for an easy lifting of the cover

OTHER COMPONENTS

BODY, FRAME AND TRAY

BODY



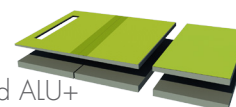
- Horizontal drain and siphon
- Vertical drain

FRAME



- Wall frame
- 13 finishes in Stainless Steel and ALU+

TRAY



- Sloped trays
- Extensions
- Risers
- Ramp

Profilitec S.p.A.
 Via Scotte, 3 - 36033 Isola Vicentina (Vicenza), ITALY
 Tel: +39 0444 268311
 e-mail: profilitec@profilitec.com (ITA)

Profilitec Corp.
 472 Meeting Street, Suite C, No. 301 -
 Charleston, SC 29403, USA
 Ph: +1 855 290 9591
 e-mail: customerservice@profilitec.com