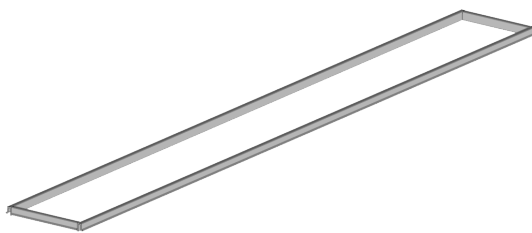


**SYSTEM DESCRIPTION**

Showertec Linear is a range of linear channels, 100% made in Italy, for floor-level, barrier-free showers. The channel is made of three elements: **Body** (channel body), **Cover** (removable and adjustable grids), and **Frame** (optional). This feature boosts aesthetic combinations, as Cover and Frame are two separate elements, which can be combined. To complete the system, you'll find the **Tray that is pre-sloped (2% slope)**, available in several sizes. Ready to be tiled.

**SHOWERTEC LINEAR - STL-F\***

**PRODUCT DESCRIPTION**

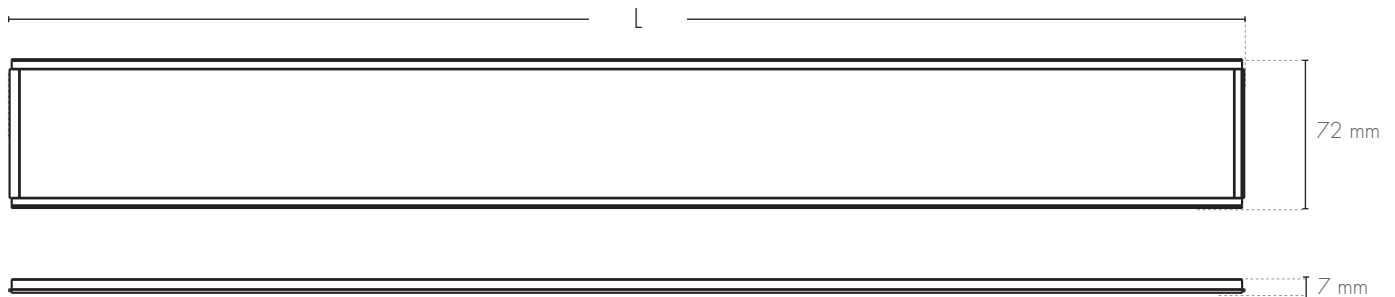


Decorative frame **STL-F** is a range of metal frames for channels in the Showertec Linear STL system. Frames are available in **AISI 316 stainless steel or in aluminum with Alu+ treatment**, in the same wide range of colors and finishes (\*) as the covers (grids) of the Showertec Linear STL system, so as to create single-color tone-on-tone combinations or in two colors with tiles, covers or other bathroom elements. Decorative frame **STL-F** frames are made of four elements grouped by means of specific supports, through which it is easy to adjust the installation to tile thicknesses up to **20 mm**.

The STL-F frame is available in all sizes of the Showertec Linear STL system 600, 700, 800, 900, 1000, and 1200 mm.

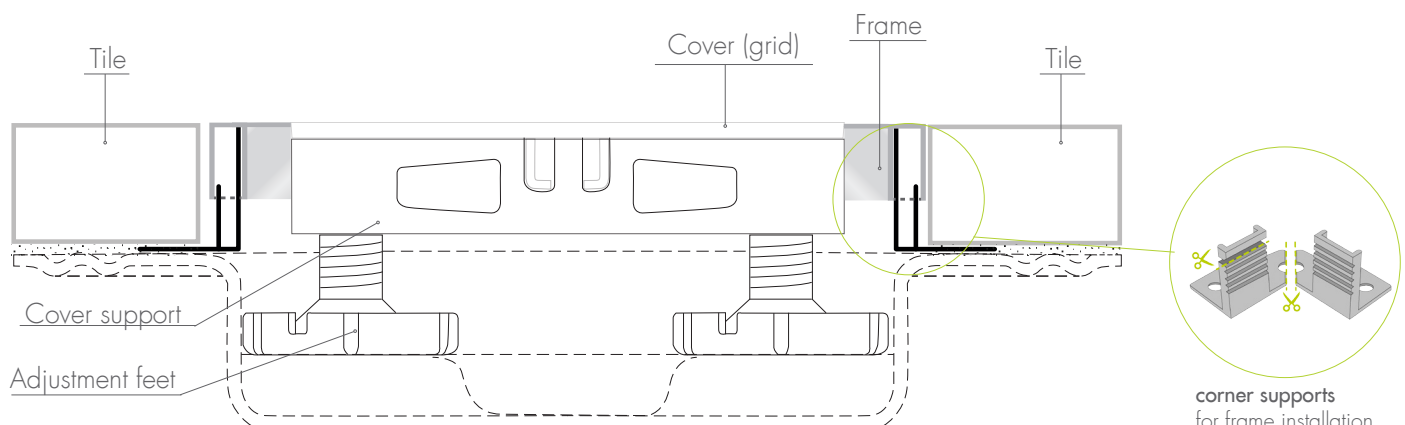
(\*): the stainless steel frame is only available in the polished finish.

**TECHNICAL DRAWINGS STL-F\***



STL-F\*, Frame decorative

L = Available lengths: 614 mm / 714 mm / 814 mm / 914 mm / 1014 mm / 1214 mm





STL-F\* CODE - STAINLESS STEEL

Article	Length (mm)	Description	pc	Pkg DxD (mm)
STL-F 600	614	Frame in Stainless Steel AISI 316 - Polished	1 pc	ø45 x 630
STL-F 700	714	Frame in Stainless Steel AISI 316 - Polished	1 pc	ø45 x 730
STL-F 800	814	Frame in Stainless Steel AISI 316 - Polished	1 pc	ø45 x 830
STL-F 900	914	Frame in Stainless Steel AISI 316 - Polished	1 pc	ø45 x 930
STL-F 1000	1014	Frame in Stainless Steel AISI 316 - Polished	1 pc	ø45 x1030
STL-F 1200	1214	Frame in Stainless Steel AISI 316 - Polished	1 pc	ø45 x 1230

STL-F\* CODE - ALUMINUM

ANODIZED ALUMINUM ALU+

Article	Length (mm)	Description	pc	Pkg DxD (mm)
STL-F 600 *	614	Frame in Anodized Aluminum Alu+ - *AT/*AR/*AO	1 pc	ø45 x 630
STL-F 700 *	714	Frame in Anodized Aluminum Alu+ - *AT/*AR/*AO	1 pc	ø45 x 730
STL-F 800 *	814	Frame in Anodized Aluminum Alu+ - *AT/*AR/*AO	1 pc	ø45 x 830
STL-F 900 *	914	Frame in Anodized Aluminum Alu+ - *AT/*AR/*AO	1 pc	ø45 x 930
STL-F 1000 *	1014	Frame in Anodized Aluminum Alu+ - *AT/*AR/*AO	1 pc	ø45 x1030
STL-F 1200 *	1214	Frame in Anodized Aluminum Alu+ - *AT/*AR/*AO	1 pc	ø45 x 1230

Finishes: \*AT = Titanium  / \*AR = Copper  / \*AO = Gold 


BRIGHT POLISHED BRUSHED ALUMINUM ALU+

Article	Length (mm)	Description	pc	Pkg DxD (mm)
STL-F 600 *	614	Frame in Bright pol. Brushed Alu+ - *ASSB/*ATSB/*ARSB/*AOSB	1 pc	ø45 x 630
STL-F 700 *	714	Frame in Bright pol. Brushed Alu+ - *ASSB/*ATSB/*ARSB/*AOSB	1 pc	ø45 x 730
STL-F 800 *	814	Frame in Bright pol. Brushed Alu+ - *ASSB/*ATSB/*ARSB/*AOSB	1 pc	ø45 x 830
STL-F 900 *	914	Frame in Bright pol. Brushed Alu+ - *ASSB/*ATSB/*ARSB/*AOSB	1 pc	ø45 x 930
STL-F 1000 *	1014	Frame in Bright pol. Brushed Alu+ - *ASSB/*ATSB/*ARSB/*AOSB	1 pc	ø45 x1030
STL-F 1200 *	1214	Frame in Bright pol. Brushed Alu+ - *ASSB/*ATSB/*ARSB/*AOSB	1 pc	ø45 x 1230

Finishes: \*ASSB = Chrome  / \*ATSB = Titanium  / \*ARSB = Copper  / \*AOSB = Gold 

BRIGHT POLISHED ALUMINUM ALU+

Article	Length (mm)	Description	pc	Pkg DxD (mm)
STL-F 600 *	614	Frame in Bright polished Aluminum Alu+ - *AORB	1 pc	ø45 x 630
STL-F 700 *	714	Frame in Bright polished Aluminum Alu+ - *AORB	1 pc	ø45 x 730
STL-F 800 *	814	Frame in Bright polished Aluminum Alu+ - *AORB	1 pc	ø45 x 830
STL-F 900 *	914	Frame in Bright polished Aluminum Alu+ - *AORB	1 pc	ø45 x 930
STL-F 1000 *	1014	Frame in Bright polished Aluminum Alu+ - *AORB	1 pc	ø45 x1030
STL-F 1200 *	1214	Frame in Bright polished Aluminum Alu+ - *AORB	1 pc	ø45 x 1230

Finishes: \*AORB = Pink Gold 

BRUSHED ALUMINUM ALU+

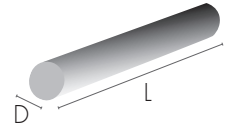
Article	Length (mm)	Description	pc	Pkg DxD (mm)
STL-F 600 *	614	Frame in Brushed Aluminum Alu+ - *AGRS/*AMSB	1 pc	ø45 x 630
STL-F 700 *	714	Frame in Brushed Aluminum Alu+ - *AGRS/*AMSB	1 pc	ø45 x 730
STL-F 800 *	814	Frame in Brushed Aluminum Alu+ - *AGRS/*AMSB	1 pc	ø45 x 830
STL-F 900 *	914	Frame in Brushed Aluminum Alu+ - *AGRS/*AMSB	1 pc	ø45 x 930
STL-F 1000 *	1014	Frame in Brushed Aluminum Alu+ - *AGRS/*AMSB	1 pc	ø45 x1030
STL-F 1200 *	1214	Frame in Brushed Aluminum Alu+ - *AGRS/*AMSB	1 pc	ø45 x 1230

Finishes: \*AGRS = Graphite  / \*AMSB = Antique Bronze 

POWDER COATED ALUMINUM ALU+

Article	Length (mm)	Description	pc	Pkg DxL (mm)
STL-F 600 *	614	Frame in Powder coated Aluminum Alu+ - *AM11/*A65	1 pc	ø45 x 630
STL-F 700 *	714	Frame in Powder coated Aluminum Alu+ - *AM11/*A65	1 pc	ø45 x 730
STL-F 800 *	814	Frame in Powder coated Aluminum Alu+ - *AM11/*A65	1 pc	ø45 x 830
STL-F 900 *	914	Frame in Powder coated Aluminum Alu+ - *AM11/*A65	1 pc	ø45 x 930
STL-F 1000 *	1014	Frame in Powder coated Aluminum Alu+ - *AM11/*A65	1 pc	ø45 x 1030
STL-F 1200 *	1214	Frame in Powder coated Aluminum Alu+ - *AM11/*A65	1 pc	ø45 x 1230

Finishes: \*AM11 = Matt White  / \*A65 = Embossed Matt Black 



FRAME DECORTIVE FEATURES AND ADVANTAGES



Our **stainless steel frames** are made with **AISI 316**, top-notch material for its anti-corrosion properties even in marine or industrial environments with very aggressive agents.



The Aluminum frames are made with **ALU+ treatment**, which guarantees high corrosion resistance and is commonly used in the naval sector.



Frames may be freely combined with **covers (grids)**, in any **color combination**.



**Support pedestals** for the installation of the Frame, adaptable according to the tile height.



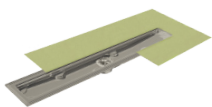
The edge underneath allows to **align the tile and maintain a correct and uniform** distance between the tile and the cover



A single piece for **lateral and corner** frame support

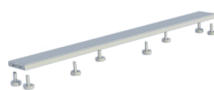
OTHER COMPONENTS

DRAIN, COVER and TRAY



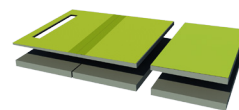
**BODY**

- Horizontal drain and siphon
- Vertical drain



**COVER**

- Tileable grid
- Invisible grid
- 16 finishes



**TRAY**

- Sloped trays
- Extensions
- Risers
- Ramp

Profilitec S.p.A.  
Via Scotte, 3 - 36033 Isola Vicentina (Vicenza), ITALY  
Tel: +39 0444 268311  
e-mail: profilitec@profilitec.com (ITA)

Profilitec Corp.  
472 Meeting Street, Suite C, No. 301 -  
Charleston, SC 29403, USA  
Ph: +1 855 290 9591  
e-mail: customerservice@profilitec.com