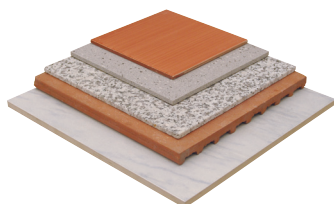
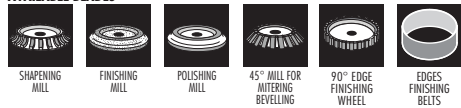


BI-BULLDOG ADVANCED



MACHINES FOR SPECIAL JOBS

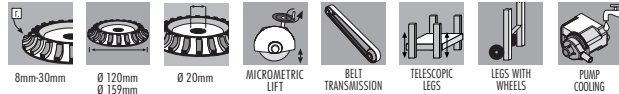
AVAILABLE BLADES



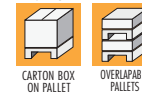
ACCESSORIES



TECHNICAL CHARACTERISTICS



PACKAGE



- For bullnosing and beveling. Create 1/2 Bullnose, 45° bevel (Jolly) on: marble, granite, porcelain, single and double fired.
- Maximum depth of shaping/radius: 30 mm (1 3/16").
- Maximum length of shaping: 120 cm (47 1/4").
- Tile width: minimum 4 cm (1 1/2"); maximum 60 cm (23 5/8").
- Connect more machines in line thanks to the special accessories.
- "Self-adjusting" diamond wheels (patented) for easy and quick adjustment.
- Three levels of finishing: rough, finished, polished.

- Gear ratio of motor to wheel 1 ÷ 1.6. Drive belt type poly V.
- Heavy duty water pumps provides superior wheel cooling.
- Provided with telescopic legs with wheels kit.
- Supplied with: milling bullnose wheel radius 10 mm (3/8"), universal table, key kit with wrench, dressing stone, user and maintenance manual.

MODEL SPECIFICATIONS

Part No.	Barcode	Box	Lightning Bolt	M	Motor	Motor	Wheel	Wheel
428	8024648005878	1	230 V 50 Hz	Single-phase	1,5 HP / 1 kW	2800	-	4480
428 60	8024648062093	1	230 V 60 Hz	Single-phase	1,5 HP / 1 kW	3660	-	5370
428 USA	8024648062086	1	110 V 60 Hz	Single-phase	1,5 HP / 1 kW	3660	-	5370
428 GB	8024648062079	1	110 V 50 Hz	Single-phase	1,5 HP / 1 kW	2800	-	4480

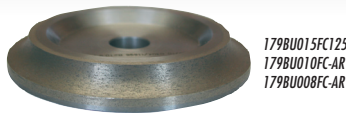
CUTTING SPECIFICATIONS AND MACHINE DIMENSIONS/WEIGHT

Model	Profile	Wheel	Depth	Radius	Length	Width	Height	Weight	Dimensions	Weight
BI-BULLDOG ADV		30 mm 1 3/16"	30 mm 1 3/16"	-	-	120 cm 47 1/4"	∞	113x80xh 70 cm 299.1 lbs	44 1/2"x31 1/2"xh 27 1/2"	136 Kg 299.1 lbs
		20 mm 3/4"	20 mm 3/4"	-	-					
		15 mm 5/8"	15 mm 5/8"	-	-					
		10 mm 3/8"	10 mm 3/8"	-	-					
		8 mm 5/16"	8 mm 5/16"	-	-					
		V45°	-	-	15 mm 5/8"					
		90°	30 mm 1 3/16"	-	-					154 Kg 339.8 lbs



1/2 BULLNOSE DIAMOND WHEELS

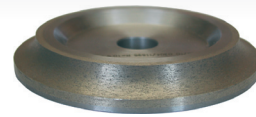
MADE IN ITALY!



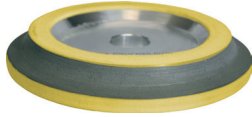
179BU015FC125
179BU010FC-AR
179BU008FC-AR



179BULL30
179BULL20
179BULL15-125
179BULL10



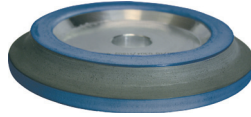
179BU30RF
179BU20RF
179BU15RF
179BU10RF
179BU8RF



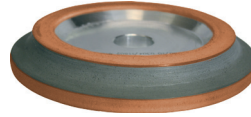
179BU30LA 179BU15LA 179BU8LA
179BU20LA 179BU10LA



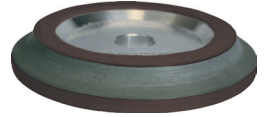
179BU30LB 179BU15LB 179BU8LB
179BU20LB 179BU10LB



179BU30LC 179BU15LC 179BU10LC



179BU30LD 179BU15LD 179BU10LD



179BU30LE 179BU15LE

1/2 BULLNOSE MILLING DIAMOND WHEELS CONTINUOUS RIM

Part No.	Barcode	Box	Profile	Diagram 1	Diagram 2	Diagram 3	Diagram 4	Diagram 5	Diagram 6	Diagram 7	Diagram 8	Diagram 9	Diagram 10	Diagram 11	Diagram 12
179BU015FC125	8024648067906	1		15 mm	5/8"	125 mm	5"	20 mm	25/32"	-	-	-	-	-	-
179BU010FC-AR	8024648067920	1		10 mm	3/8"	120 mm	4 3/4"	20 mm	25/32"	-	-	-	-	-	-
179BU008FC-AR	8024648067265	1		8 mm	5/16"	115 mm	4 1/2"	20 mm	25/32"	-	-	-	-	-	-

1/2 BULLNOSE SEGMENTED DIAMOND WHEELS FOR SHAPING

Part No.	Barcode	Box	Profile	Diagram 1	Diagram 2	Diagram 3	Diagram 4	Diagram 5	Diagram 6	Diagram 7	Diagram 8	Diagram 9	Diagram 10	Diagram 11	Diagram 12
179BULL30	8024648061690	1		30 mm	1 3/16"	160 mm	6 1/4"	20 mm	25/32"	-	-	-	-	-	-
179BULL20	8024648060563	1		20 mm	3/4"	150 mm	5 7/8"	20 mm	25/32"	-	-	-	-	-	-
179BULL15-125	8024648067227	1		15 mm	5/8"	130 mm	5 1/8"	20 mm	25/32"	-	-	-	-	-	-
179BULL10	8024648011398	1		10 mm	3/8"	120 mm	4 3/4"	20 mm	25/32"	-	-	-	-	-	-

1/2 BULLNOSE CONTINUOUS RIM DIAMOND WHEELS FOR FINISHING

Part No.	Barcode	Box	Profile	Diagram 1	Diagram 2	Diagram 3	Diagram 4	Diagram 5	Diagram 6	Diagram 7	Diagram 8	Diagram 9	Diagram 10	Diagram 11	Diagram 12
179BU30RF	8024648061874	1		30 mm	1 3/16"	160 mm	6 1/4"	20 mm	25/32"	170/200	-	-	-	-	-
179BU20RF	8024648061751	1		20 mm	3/4"	150 mm	5 7/8"	20 mm	25/32"	170/200	-	-	-	-	-
179BU15RF125	8024648013873	1		15 mm	5/8"	125 mm	5"	20 mm	25/32"	170/200	-	-	-	-	-
179BU10RF	8024648011701	1		10 mm	3/8"	120 mm	4 3/4"	20 mm	25/32"	170/200	-	-	-	-	-
179BU8RF	8024648013880	1		8 mm	5/16"	115 mm	4 1/2"	20 mm	25/32"	170/200	-	-	-	-	-

1/2 BULLNOSE DIAMOND WHEELS FOR POLISHING

Part No.	Barcode	Box	Profile	Diagram 1	Diagram 2	Diagram 3	Diagram 4	Diagram 5	Diagram 6	Diagram 7	Diagram 8	Diagram 9	Diagram 10	Diagram 11	Diagram 12
179BU30LA	8024648061829	1		30 mm	1 3/16"	160 mm	6 1/4"	20 mm	25/32"	400	17x17xh 5 cm	6 5/8"x6 5/8"xh 2"	1,8 Kg	3.9 lbs	
179BU30LB	8024648061836	1		30 mm	1 3/16"	160 mm	6 1/4"	20 mm	25/32"	800	17x17xh 5 cm	6 5/8"x6 5/8"xh 2"	1,8 Kg	3.9 lbs	
179BU30LC	8024648061843	1		30 mm	1 3/16"	160 mm	6 1/4"	20 mm	25/32"	1500	17x17xh 5 cm	6 5/8"x6 5/8"xh 2"	1,8 Kg	3.9 lbs	
179BU30LD	8024648061850	1		30 mm	1 3/16"	160 mm	6 1/4"	20 mm	25/32"	1800	17x17xh 5 cm	6 5/8"x6 5/8"xh 2"	1,8 Kg	3.9 lbs	
179BU30LE	8024648061867	1		30 mm	1 3/16"	160 mm	6 1/4"	20 mm	25/32"	3500	17x17xh 5 cm	6 5/8"x6 5/8"xh 2"	1,8 Kg	3.9 lbs	
179BU20LA	8024648061706	1		20 mm	3/4"	150 mm	5 7/8"	20 mm	25/32"	400	17x17xh 5 cm	6 5/8"x6 5/8"xh 2"	1,3 Kg	2.8 lbs	
179BU20LB	8024648061713	1		20 mm	3/4"	150 mm	5 7/8"	20 mm	25/32"	800	17x17xh 5 cm	6 5/8"x6 5/8"xh 2"	1,3 Kg	2.8 lbs	
179BU20LC	8024648061720	1		20 mm	3/4"	150 mm	5 7/8"	20 mm	25/32"	1500	17x17xh 5 cm	6 5/8"x6 5/8"xh 2"	1,3 Kg	2.8 lbs	
179BU20LD	8024648061737	1		20 mm	3/4"	150 mm	5 7/8"	20 mm	25/32"	1800	17x17xh 5 cm	6 5/8"x6 5/8"xh 2"	1,3 Kg	2.8 lbs	
179BU20LE	8024648061744	1		20 mm	3/4"	150 mm	5 7/8"	20 mm	25/32"	3500	17x17xh 5 cm	6 5/8"x6 5/8"xh 2"	1,3 Kg	2.8 lbs	
179BU15LA	8024648013897	1		15 mm	5/8"	125 mm	4 7/8"	20 mm	25/32"	400	13x13xh 4 cm	5 3/8"x5 3/8"xh 1 5/8"	330 gr	11.6 oz	
179BU15LB	8024648013927	1		15 mm	5/8"	125 mm	4 7/8"	20 mm	25/32"	800	13x13xh 4 cm	5 3/8"x5 3/8"xh 1 5/8"	330 gr	11.6 oz	
179BU15LC	8024648054364	1		15 mm	5/8"	125 mm	4 7/8"	20 mm	25/32"	1500	13x13xh 4 cm	5 3/8"x5 3/8"xh 1 5/8"	330 gr	11.6 oz	
179BU15LD	8024648054371	1		15 mm	5/8"	125 mm	4 7/8"	20 mm	25/32"	1800	13x13xh 4 cm	5 3/8"x5 3/8"xh 1 5/8"	330 gr	11.6 oz	
179BU15LE	8024648054388	1		15 mm	5/8"	125 mm	4 7/8"	20 mm	25/32"	3500	13x13xh 4 cm	5 3/8"x5 3/8"xh 1 5/8"	330 gr	11.6 oz	
179BU10LA	8024648013903	1		10 mm	3/8"	120 mm	4 3/4"	20 mm	25/32"	400	13x13xh 4 cm	5 3/8"x5 3/8"xh 1 5/8"	330 gr	11.6 oz	
179BU10LB	8024648013934	1		10 mm	3/8"	120 mm	4 3/4"	20 mm	25/32"	800	13x13xh 4 cm	5 3/8"x5 3/8"xh 1 5/8"	330 gr	11.6 oz	
179BU10LC	8024648017550	1		10 mm	3/8"	120 mm	4 3/4"	20 mm	25/32"	1500	13x13xh 4 cm	5 3/8"x5 3/8"xh 1 5/8"	330 gr	11.6 oz	
179BU10LD	8024648017543	1		10 mm	3/8"	120 mm	4 3/4"	20 mm	25/32"	1800	13x13xh 4 cm	5 3/8"x5 3/8"xh 1 5/8"	330 gr	11.6 oz	
179BU8LA	8024648013910	1		8 mm	5/16"	115 mm	4 1/2"	20 mm	25/32"	400	13x13xh 4 cm	5 3/8"x5 3/8"xh 1 5/8"	330 gr	11.6 oz	
179BU8LB	8024648013941	1		8 mm	5/16"	115 mm	4 1/2"	20 mm	25/32"	800	13x13xh 4 cm	5 3/8"x5 3/8"xh 1 5/8"	330 gr	11.6 oz	

MACHINES FOR SPECIAL JOBS



179BULL45°



179BU16SC
179BU30SC



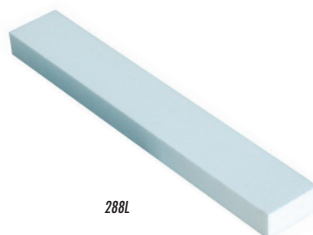
179BUN100



179BUN800



179BUPNA



288L

MACHINES FOR SPECIAL JOBS

SEGMENTED DIAMOND WHEEL 45° PROFILE FOR JOLLY AND BEVEL

Part No.	Barcode	Box	Profile	Wheel 1	Wheel 2	Wheel 3	Diamond	Box	Weight
179BULL45°	8024648011411	1		15 mm 5/8"	120 mm 4 3/4"	20 mm 25/32"	D 252	13x13xh 4 cm 5 3/8"x5 3/8"xh 1 5/8"	830 gr 29.30 oz

FLAT (90° EDGE) SEGMENTED DIAMOND WHEEL (SHAPING)

Part No.	Barcode	Box	Profile	Wheel 1	Wheel 2	Wheel 3	Diamond	Box	Weight
179BU16SC	8024648016904	1		16 mm 5/8"	120 mm 4 3/4"	20 mm 25/32"	D252	13x13xh 4 cm 5 3/8"x5 3/8"xh 1 5/8"	900 gr 31.8 oz
179BU30SC	8024648061881	1		32 mm 1 1/4"	120 mm 4 3/4"	20 mm 25/32"	D252	13x13xh 4 cm 5 3/8"x5 3/8"xh 1 5/8"	1,4 Kg 3.1 lbs

FLAT (90° EDGE) DIAMOND BAND (FINISHING AND POLISHING)

Part No.	Barcode	Box	Profile	Wheel 1	Wheel 2	Wheel 3	Diamond	Box	Weight
179BUN100	8024648016775	1		38 mm 1 1/2"	100 mm 4"	-	D100	13x13xh 4 cm 5 3/8"x5 3/8"xh 1 5/8"	100 gr 3.4 oz
179BUN400	8024648016782	1		38 mm 1 1/2"			D400		
179BUN800	8024648016799	1		38 mm 1 1/2"			D800		

RUBBER DRUM HOLDER FOR DIAMOND BAND

Part No.	Barcode	Box	Description	Box	Weight
179BUPNA	8024648016935	1	Rubber drum holder for diamond band Ø 100 mm h 38 mm - 1 1/2"	13x13xh 4 cm 5 3/8"x5 3/8"xh 1 5/8"	500 gr 17 oz

DRESSING/SHARPENING STONES

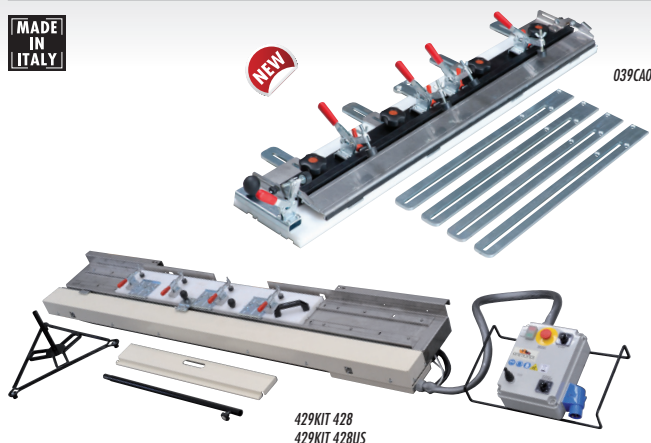
Part No.	Barcode	Box	Description	Box	Weight
288 L	8024648013965	6	Dressing stone 30x10x200 mm (1 3/16"x13/32"x7 7/8")	10x20xh 2 cm 4"x8"xh 25/32"	450 gr 15.9 oz

ACCESSORIES FOR BULLDOG AND BI-BULLDOG

MADE IN ITALY!

NEW

039CA00AB



429KIT 428
429KIT 428US



428PRO3A



429KIT 427AD
429KIT 427US

Removable tank kit and pump



Manual feed kit with wheel

MACHINES FOR SPECIAL JOBS

TABLES FOR BULLDOG ADV, BI-BULLDOG ADV

Part No.	Barcode	Box	Description	Dimensions	Weight
039CA00AB	8024648058553	1	"universal table" for tiles max length 80 cm, max width 60 cm; min width 4 cm	90x25xh 9 cm 35 1/2"x9 7/8"xh 3 1/2"	7,5 Kg 16.5 lbs
039CA00ABB	8024648082763	1	"universal table" for tiles max length 120 cm, max width 60 cm; min width 4 cm	137x25xh 9 cm 54"x9 7/8"xh 3 1/2"	9,5 Kg 21 lbs

SIDE EXTENSIONS FOR BULLDOG ADV AND BI-BULLDOG ADV

Part No.	Barcode	Box	Description	Dimensions	Weight
428PRO3A	8024648062161	1	Side extensions for bulldog adv and bi-bulldog adv - pair	100x49xh 12 cm 39" 3/8"x19 1/4"xh 4 3/4"	13 Kg 28.6 lbs

MANUAL FEED KIT WITH WHEEL FOR BULLDOG ADV AND BI-BULLDOG ADV

Part No.	Barcode	Box	Description	Dimensions	Weight
429KIT 427AD	8024648071194	1	Automation kit for ADV 230V 50/60 Hz	240x60xh 50 cm 94"x23"xh 2"	86 Kg
429KIT 427US	8024648071781	1	Automation kit for ADV 110V 50/60 Hz		190 lbs
429KIT 428	8024648071200	1	Automation kit for ADV 230V 50/60 Hz		90 Kg
429KIT 428US	8024648071798	1	Automation kit for ADV 110V 50/60 Hz		198 lbs

MANUAL FEED KIT WITH WHEEL FOR BULLDOG ADV E BI-BULLDOG ADV

Part No.	Barcode	Box	Description	Dimensions	Weight
419AVBU BULL	8024648073785	1	Manual feed kit with wheel for Bulldog Adv	-	-
419AVBU BIBU	8024648073778	1	Manual feed kit with wheel for Bi-Bulldog Adv	-	-

REMOVABLE TANK KIT AND PUMP FOR BULLDOG ADV E BI-BULLDOG ADV

Part No.	Barcode	Box	Description	Dimensions	Weight
429KITVA230	8024648071835	1	Removable tank kit and pump for Bulldog Adv 230V 50 Hz	-	-
429KITVA220H6	8024648075093	1	Removable tank kit and pump for Bulldog Adv 230V 60 Hz	-	-
429KITVA110	8024648071828	1	Removable tank kit and pump for Bulldog Adv 110V 50 Hz	-	-
429KITVA110/6	8024648081278	1	Removable tank kit and pump for Bulldog Adv 110V 60 Hz	-	-
429KITV 230	8024648072108	1	Removable tank kit and pump for Bi-Bulldog Adv 230V 50 Hz	-	-
429KITV 230BB	8024648071811	1	Removable tank kit and pump for Bi-Bulldog Adv 230V 60 Hz	-	-
429KITV 110BB	8024648071804	1	Removable tank kit and pump for Bi-Bulldog Adv 110V 50 Hz	-	-
429KITV 110B6	8024648081261	1	Removable tank kit and pump for Bi-Bulldog Adv 110V 60 Hz	-	-

ACCESSORIES/MACHINES COMBINATIONS

Part No.	BULLDOG Description	BULLDOG ADV	BI-BULLDOG ADV	BULLDOG ADV WITH WHEEL FEED KIT	BI-BULLDOG ADV WITH WHEEL FEED KIT	BULLDOG ADV AUTO	BI-BULLDOG ADV AUTO
039CA00AB	"universal table" for tiles max length 80 cm (31 1/2"), max width 60 cm (23 5/8"); min width 4 cm (1 1/2")	standard	-	-	-	-	-
039CA00ABB	"universal table" for tiles max length 120 cm (31 1/2"), max width 60 cm (23 5/8"); min width 4 cm (1 1/2")	•*	standard	standard	standard	standard	standard
428PRO3A	Coppia prolunghe per Bulldog adv e Bi-Bulldog adv	•	standard	standard	standard	standard	standard
429KIT 427AD	Automation kit for Bulldog Adv	•	-	-	•	standard	-
429KIT 428	Automation kit for Bi-Bulldog Adv	-	•	-	-	-	standard
419AVBU BULL	Manual feed kit with wheel for Bulldog Adv	•	-	standard	-	-	-
419AVBU BIBU	Manual feed kit with wheel for Bi-Bulldog Adv	-	•	-	standard	-	-
429KITVA230	Removable tank kit and pump for Bulldog Adv 230V 50 Hz	•	-	•	-	standard	-
429KITVA220H6	Removable tank kit and pump for Bulldog Adv 230V 60 Hz	•	-	•	-	standard	-
429KITVA110	Removable tank kit and pump for Bulldog Adv 110V 50 Hz	•	-	•	-	standard	-
429KITVA110/6	Removable tank kit and pump for Bulldog Adv 110V 60 Hz	•	-	•	-	standard	-
429KITV 230	Removable tank kit and pump for Bi-Bulldog Adv 230V 50 Hz	-	•	-	•	-	standard
429KITV 230BB	Removable tank kit and pump for Bi-Bulldog Adv 230V 60 Hz	-	•	-	•	-	standard
429KITV 110BB	Removable tank kit and pump for Bi-Bulldog Adv 110V 50 Hz	-	•	-	•	-	standard
429KITV 110B6	Removable tank kit and pump for Bi-Bulldog Adv 110V 60 Hz	-	•	-	•	-	standard

* The "universal" table length 120 cm can be mounted on Bull-Dog Adv only in combination with the side extensions (cod.428PRO3A)