

## GROUTING TOOLS



### GROUTING TOOLS

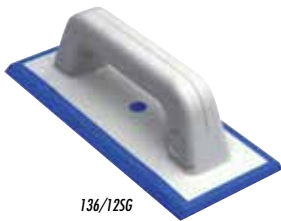
- M2 ANTIABRASION RUBBER GROUT FLOATS
- M3 FOAM RUBBER GROUT FLOATS
- M4 FOAM AND STIFF RUBBER GROUT RAKES / SQUEEGEE
- M5 FLOAT WITH SCRUB PAD / JOINT CLEANER
- M6 GROUT-JOINT SMOOTHING AND BROOMS

Our range of grouting tools offers a wide portfolio of solutions for the installation of both cement and epoxy based grouts. The 5 rubber grout floats models, characterized by the innovative dual profile for optimal performance both with low and high density grout, are available in various sizes and consistencies. Furthermore, 3 models of foam rubber grout floats, of which one equipped with pole for working standing up. Both lines include models with interchangeable rubber. To complete the offer of grouting tools, the 7 grout-rakes/squeegees models: available with double foam rubber or single stiff rubber, in painted or stainless steel. Last but not least: float with interchangeable scrub pads (available in 5 different levels of abrasiveness), tools to clean and smooth the joints and even brooms with angled handle for a more correct posture.



# ANTIABRASION RUBBER GROUT FLOATS

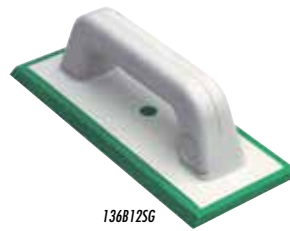
MADE IN ITALY



136/12SG



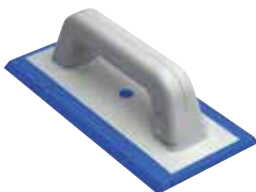
136/24SG



136B12SG



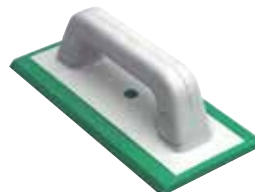
136B24SG



13695X245SG



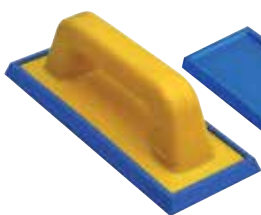
BOX



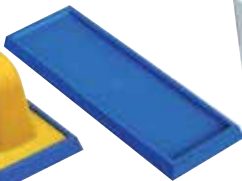
13695X245BSG



BOX



13695X245C



136GM02D



BOX

### PACKAGE



DISPLAY BOX



CARTON BOX

## ANTIABRASION RUBBER GROUT FLOATS

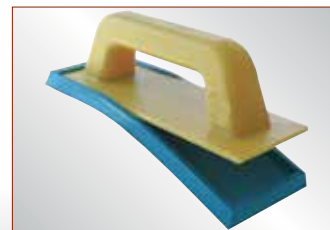
- For grouting of floors and walls.
- Injection rubber.
- Ergonomic handle, antiabrasion rubber.

- The dual profile rubber (18°o 42°) allows optimal performance both with low density and high density grout, with both narrow and large joints.

Part No.	Barcode	Quantity	Description	Interchangeable	Handle	Rubber	Weight	Dimensions	Weight	Dimensions	Weight	Dimensions	
136/12SG	8024648058591	12	"Blue" soft rubber. Dual profile*	-	-	115x250 mm	4 1/2"x10"	336 gr	11.8 oz	35x27xh31 cm	13 3/4"x10 5/8"xh 12 1/4"	4,4 Kg	9.7 lbs
136/24SG	8024648060198	24	"Blue" soft rubber. Dual profile*	-	•	115x250 mm	4 1/2"x10"	336 gr	11.8 oz	39x35xh31 cm	15 3/8"x13 3/4"xh 12 1/4"	8,5 Kg	18.7 lbs
136B12SG	8024648060204	12	"Green" hard rubber. Dual profile*	-	-	115x250 mm	4 1/2"x10"	336 gr	11.8 oz	35x27xh31 cm	13 3/4"x10 5/8"xh 12 1/4"	4,4 Kg	9.7 lbs
136B24SG	8024648060211	24	"Green" hard rubber. Dual profile*	-	•	115x250 mm	4 1/2"x10"	336 gr	11.8 oz	39x35xh31 cm	15 3/8"x13 3/4"xh 12 1/4"	8,5 Kg	18.7 lbs
13695X245SG	8024648060228	24	"Blue" soft rubber. Dual profile*	-	•	100x245 mm	4"x9 5/8"	306 gr	10.8 oz	39x35xh31 cm	15 3/8"x13 3/4"xh 12 1/4"	7,7 Kg	16.9 lbs
13695X245BSG	8024648060235	24	"Green" hard rubber. Dual profile*	-	•	100x245 mm	4"x9 5/8"	306 gr	10.8 oz	39x35xh31 cm	15 3/8"x13 3/4"xh 12 1/4"	7,7 Kg	16.9 lbs
13695X245C	8024648000484	24	"Azzurrina" soft rubber. Interchangeable	•	•	95x245 mm	3 3/4"x9 5/8"	330 gr	11.6 oz	39x35xh31 cm	15 3/8"x13 3/4"xh 12 1/4"	8,3 Kg	18.3 lbs

## REPLACEMENT FOAM RUBBER

Part No.	Barcode	Quantity	Description	Dimensions	Weight	Dimensions	Weight	Dimensions		
136GM02D	8024648000545	10	Replacement rubber pad for 136 95X245C	95x245 mm	150 gr	5.3 oz	27x15xh 10 cm	10 5/8"x6"xh 4"	1,6 Kg	3.5 lbs





136N



BOX



136RC03A



147



136NECO/20



BOX



136MAXIN

136RC01A



197SC



197CF



197180CM

PACKAGE



FOAM RUBBER GROUT FLOATS

- For grouting of floors and walls.
- Ergonomic handle, medium density foam rubber.

- Suitable for low density grouts and for joints up to 3 mm (1/8").
- For item 136N: Quick Change interchangeable foam rubber.

Part No.	Barcode	Box	Description	Inter-changeable	Image	Weight	Dimensions	Weight	
136N	8024648000514	15	"Black" foam rubber "EASY-LOCK"	•		300 gr   10.6 oz	130x290 mm   5 1/8"x11 7/16"	39x35xh 31 cm   15 3/8"x13 3/4"xh 12 1/4"	4,9 Kg   10.8 lbs
136NECO/20	8024648014474	20	"Black" foam rubber	-		200 gr   7 oz	115x250 mm   4 1/2"x10"	39x35xh 31 cm   15 3/8"x13 3/4"xh 12 1/4"	4,4 Kg   9.7 lbs
136MAXIN	8024648004543	5	"Black" foam rubber	•		650 gr   23 oz	600x110 mm   23 5/8"x4 3/8"	80x33xh 21 cm   31 1/2"x13"xh 8 1/4"	4,1 Kg   9 lbs

REPLACEMENT FOAM RUBBER

Part No.	Barcode	Box	Description	Image	Weight	Dimensions	Weight	
136RC03A	8024648087904	6	Replacement rubber for art. 136N "EASY-LOCK"		180 gr   6.3 oz	130x290 mm   5 1/8"x11 7/16"	31x10xh 14 cm   12 1/4"x4"xh 5 1/2"	1,2 Kg   2.6 lbs
136RC01A	8024648004550	5	Replacement part for 136MAXIN		400 gr   14.1oz	600x110 mm   23 5/8"x4 3/8"	61x13xh 10 cm   24"x5"xh 4"	2,4 Kg   5.2 lbs

ANODIZED ALUMINUM POLE (FOR ITEM 136MAXIN)

- Superior strength, available in multiple lengths. Also available in two-piece sectional version.

Part No.	Barcode	Box	Description	Ø	Image	Weight	Dimensions	Weight
197CF	8024648000316	12	With hole	27 mm   1 1/16"		420 gr   14.8 oz	140x20xh 10 cm   55"x7 7/8"xh 4"	5,5 Kg   12.1 lbs
197SC	8024648014511	10	Sectional with hole			530 gr   18.7 oz	71x23xh 15 cm   28"x9"xh 6"	6,7 Kg   14.8 lbs
197180CM	8024648000644	12	With hole			600 gr   21.2 oz	180x20xh 10 cm   70"x7 7/8"xh 4"	7,2 Kg   15.9 lbs

GROUT FLOAT 28 cm (11")

- For grouting of walls. Plastic handle, soft rubber blade.

- Suitable for low density grouts and for small grout joints.

Part No.	Barcode	Box	Description	Image	Weight	Dimensions	Weight	
147	8024648000569	12	Rubber trowel with plastic handle		200 gr   7 oz	280 mm   11"	33x33xh 10 cm   13"x13"xh 4"	2,8 Kg   6.2 lbs



①



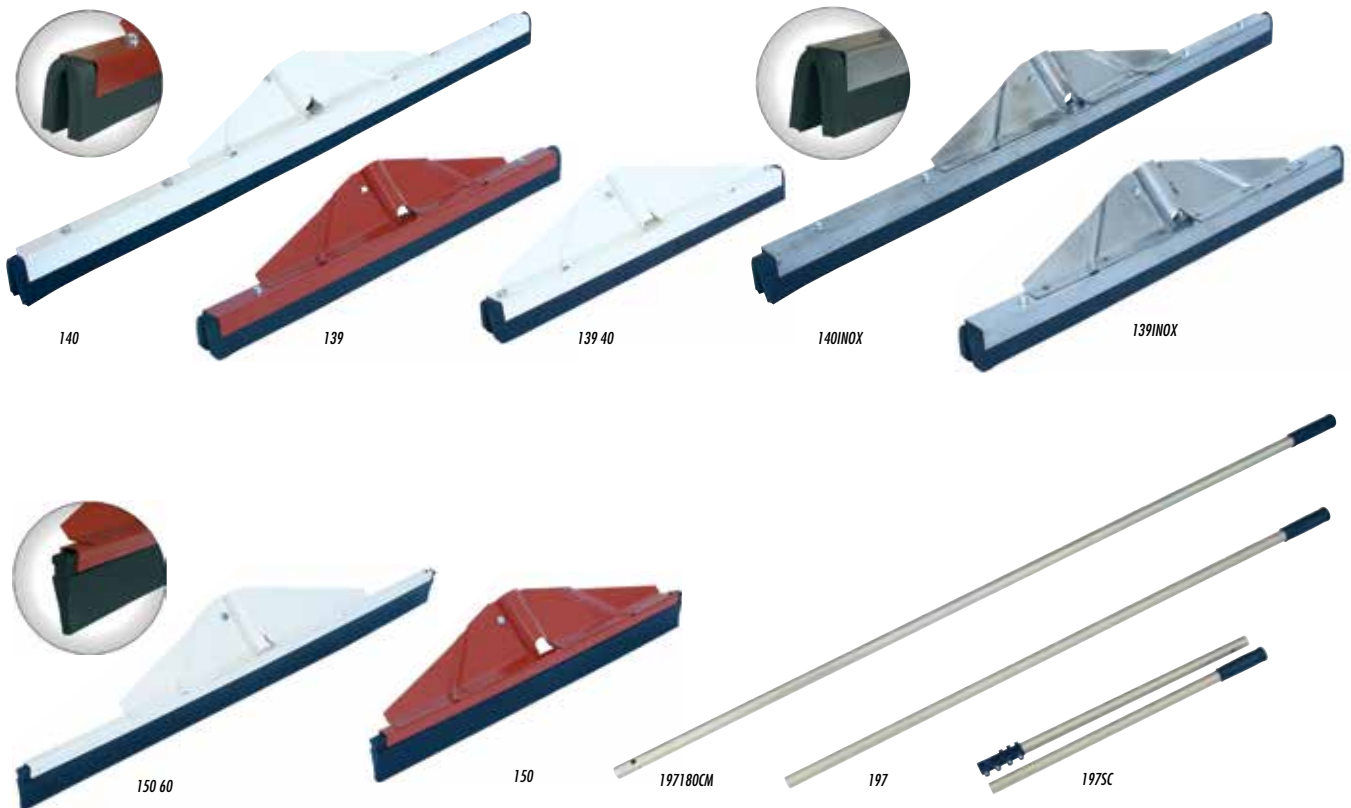
②



OK

# FOAM AND STIFF RUBBER GROUT RAKES / SQUEEGEE

MADE IN ITALY



PACKAGE



CARTON BOX

## REPLACEABLE DOUBLE RUBBER RAKES

- Available in painted or stainless steel with special flexible design to improve shock resistance.
- Handle housing Ø 26 mm (10").
- The double foam rubber allows greater liquid gathering.
- Replaceable foam rubber.

Part No.	Barcode	Box	Diagram	Weight	Dimensions	Dimensions	Weight
140	8024648000422	12	75 cm   29 1/2"	600 gr   21.2 oz	80x33xh 21 cm	31 1/2"x13"xh 8 1/4"	8,0 Kg   17.6 lbs
139	8024648000408	15	50 cm   19 11/16"	500 gr   17.6 oz	58x30xh 25 cm	22 7/8"x11 3/4"xh 9 7/8"	7,9 Kg   17.4 lbs
139 40	8024648000415	15	40 cm   15 3/4"	400 gr   14.1 oz	58x30xh 25 cm	22 7/8"x11 3/4"xh 9 7/8"	6,4 Kg   14.1 lbs

## STAINLESS STEEL REPLACEABLE DOUBLE RUBBER RAKES

Part No.	Barcode	Box	Diagram	Weight	Dimensions	Dimensions	Weight
140INOX	8024648000460	12	75 cm   29 1/2"	600 gr   21.2 oz	80x33xh 21 cm	31 1/2"x13"xh 8 1/4"	8 Kg   17.6 lbs
139INOX	8024648000453	15	50 cm   19 11/16"	500 gr   17.6 oz	58x30xh 25 cm	22 7/8"x11 3/4"xh 9 7/8"	6,4 Kg   14.1 lbs

## STIFF RUBBER RAKES

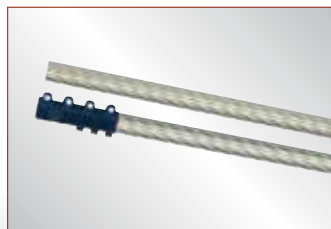
- Made of painted steel with special flexible design to improve shock resistance.
- Handle housing Ø 26 mm (10").
- The stiff rubber makes them suitable for medium and high density grouts.

Part No.	Barcode	Box	Diagram	Weight	Dimensions	Dimensions	Weight
150 60	8024648000439	12	60 cm   23 5/8"	500 gr   17.6 oz	80x33xh 21 cm	31 1/2"x13"xh 8 1/4"	6,8 Kg   15 lbs
150	8024648000446	15	40 cm   15 3/4"	400 gr   14.1 oz	58x30xh 25 cm	22 7/8"xh 9 7/8"	6,4 Kg   14.1 lbs

## ANODIZED ALUMINUM POLE

- Superior strength. Sectional version and multiple length solid versions are available.

Part No.	Barcode	Box	Description	Ø	Length	Weight	Dimensions	Dimensions	Weight
197	8024648000637	12	Without hole	27 mm 1 1/16"	133 cm	420 gr   14.8 oz	140x20xh 10 cm	55"x7 7/8"xh 4"	5,5 Kg   12.1 lbs
197SC	8024648014511	12	Sectional with hole		52"	530 gr   18.7 oz	71x23xh 15 cm	28"x9"xh 6"	6,7 Kg   14.8 lbs
197180CM	8024648000644	12	With hole		180 cm   70 7/8"	600 gr   21.2 oz	180x20xh 10 cm	70"x7 7/8"xh 4"	7,2 Kg   15.9 lbs



GROUTING TOOLS

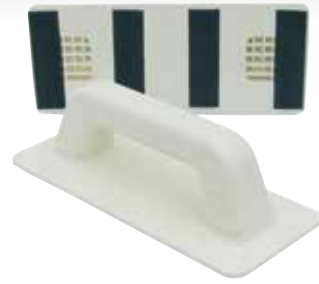
MADE IN ITALY



226



80X



306IV01D



227M

227N

227V

227B



275



275RIC

PACKAGE



FLOAT WITH ABRASIVE PADS

- Ergonomic handle.
- Pads are held in place with velcro.

- Pad depth 20 mm (3/4").
- Supplied with: 1 black pad + 1 white pad.

Part No.	Barcode	Box Icon	Description	Weight Icon	Dimensions Icon	Weight	Dimensions	Weight
226	8024648000583	12	"Finish" with 2 pads (black and white)	•	120x250 mm	300 gr	39x35x31 cm	4 Kg
306IV01D	80246480005304	12	"Finish" handle with velcro	-	4 3/4"x10"	180 gr	15 3/8"x13 3/4"xh 12 1/4"	2,6 Kg
						10.6 oz		8.8 lbs
						6.4 oz		5.7 lbs

REPLACEMENT PADS

Part No.	Barcode	Box Icon	Description	Weight Icon	Dimensions Icon	Weight	Dimensions	Weight	
227M	8024648059093	10	Brown pad (very high abrasiveness)	120x250xh 20 mm	4 3/4"x10"xh 3/4"	80 gr	5x25x11 cm	800 gr	
227N	8024648000590	10	Black pad (high abrasiveness)						2.8 oz
227V	8024648071385	10	Green pad (medium abrasiveness)			25 gr	0.9 oz	10"x10"xh 4 3/8"	250 gr
227B	8024648000606	10	White pad (low abrasiveness)						

GROUTSAW

- For joint cleaning, removal of old grout, loose grout, moldy or discoloured grout.
- Electro-welded wolfram carbide blades.

- The blades can be overlapped to accommodate larger joint sizes.
- Supplied with: 2 wolfram carbide blades.

Part No.	Barcode	Box Icon	Description	Weight Icon	Dimensions Icon	Weight	Dimensions	Weight
275	8024648007896	5	"Abratughe" with 2 blades	80 gr	27x15xh 10 cm	2.8 oz	10 5/8"x6"xh 4"	500 gr
275RIC	8024648007902	10	Wolfram carbide blade	5 gr	-	0.2 oz	-	50 gr



# GROUT-JOINT SMOOTHING AND BROOMS

MADE IN ITALY



PACKAGE



CARTON BOX

## JOINT FINISHING POLE WITH INTERCHANGEABLE TIPS

- Used to create a grout joint, of uniform width and depth, that is well compacted and smooth.
- Removes possible air bubbles inside the joint.
- The specific tip provides maximum compaction while ensuring that the depth remains uniform relative to the surface of the tile.
- Telescoping pole.
- Supplied with: chrome-plated spheres  $\varnothing$  30-27-22-17 mm ( $\varnothing$  1 3/16" - 1 1/16" - 7/8" - 11/16").

Part No.	Barcode	Icon	Description	Weight	Length	Width	Height	Volume
398	8024648000552	2	"Pallino" joint finishing pole	900 gr 31.8 oz	125x10xh 8 cm	49 1/4"x4"xh 3 1/8"		2,3 Kg 5 lbs

PACKAGE



DISPLAY BOX

## BROOMS

- The broom head's angle is ergonomically correct to provide maximum cleaning with minimal fatigue. The aluminum pole  $\varnothing$  27 mm (1 1/16") is flexible to provide a natural springing motion which reduces impact shock while improving efficiency.

Part No.	Barcode	Icon	Description	Weight	Length	Width	Height	Volume
348A	8024648000613	12	"Battista" soft bristles (without handle)	400 gr 14.1 oz	39x35xh 31 cm	15 3/8"x13 3/4"xh 12 1/4"		5,2 Kg 11.5 lbs
348B	8024648000620	12	"Battista" stiff bristle (without handle)					

## ANODIZED ALUMINUM POLE

- Superior strength. Sectional version and multiple length solid versions are available.

Part No.	Barcode	Icon	Description	$\varnothing$	Length	Weight	Volume	Volume	
197	8024648000637	12	Without hole	27 mm 1 1/16"	133 cm	420 gr 14.8 oz	140x20xh 10 cm	55"x7 7/8"xh 4"	5,5 Kg 12.1 lbs
197SC	8024648014511	10	Sectional with hole		52"	530 gr 18.7 oz	71x23xh 15 cm	28"x9"xh 6"	6,7 Kg 14.8 lbs
197180CM	8024648000644	12	With hole		180 cm   70 7/8"	600 gr 21.2 oz	180x20xh 10 cm	70"x7 7/8"xh 4"	7,2 Kg 15.9 lbs



GROUTING TOOLS