

BLANKE

BLANKE SECUMAT

BLANKE SECUMAT is a tear proof rolled uncoupling underlayment that provides a secure bonding surface for ceramic tile and natural stone installations on both interior floor and walls. The BLANKE SECUMAT also provides crack isolation protection that helps prevent damage to the tile covering caused by lateral substrate movement. This light weight, easy-to-install underlayment features low elevation and requires less thinset that other rolled uncoupling products. The BLANKE SECUMAT is an ideal underlayment for both new installations and for renovations over existing substrates.

Material features:

BLANKE SECUMAT is constructed from a fiberglass reinforcing mesh embedded between two layers of polyester fabric.

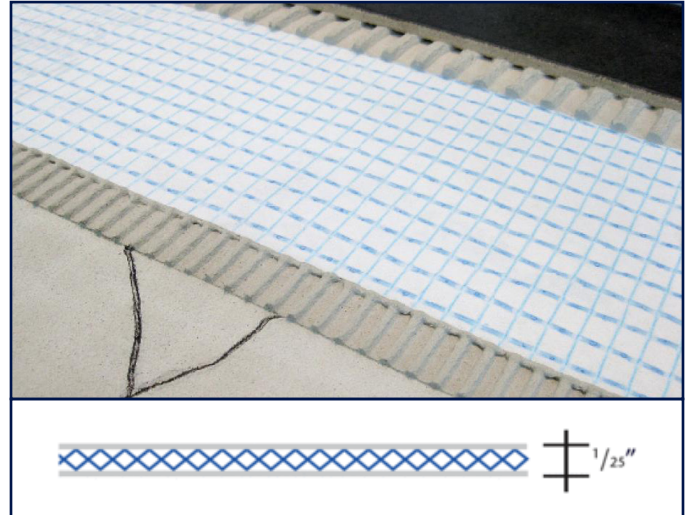
Substrates:

Substrate must be flat, dry, clean, and with a load bearing capacity that is sufficient for expected traffic flows. Uneven areas must be leveled out. Any loose material must be ground off. Primers for moisture sensitive substrate and self-levelers should be applied as needed. Transition height issues should be dealt with prior to applying the uncoupling layer.

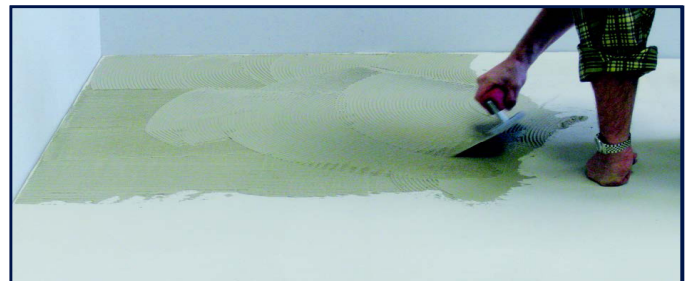


1. Substrate must be solid, flat, load-bearing and free from bond-inhibitors. Any loose material must be ground off. Primers for moisture sensitive substrate and self-levelers should be applied as needed.

INSTALLATION INSTRUCTIONS



- Mudbeds / Dry packs / Mortar screeds
- Green cement (2- 5 days as soon as slab can be walked on)
- Concrete (cured minimum 3 months)
- Gypsum based screeds
- Most floor heating systems
- Existing ceramic tile (must be solidly bonded and intact)
- Existing natural stone (must be solidly bonded and intact)
- Cement and lime based plaster
- Wallboard

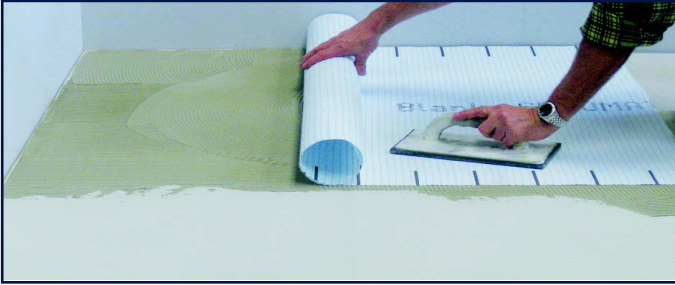


2. Using a utility knife, dry cut the mat to fit the area where the tile will be installed. Be sure to allow a minimum of 1/4" gap where the installation meets vertical surfaces, thresholds and different floor types. Apply a normal mix of latex-modified thinset mortar (mid-grade quality or higher) to the substrate with a 5/16" V-notched trowel.

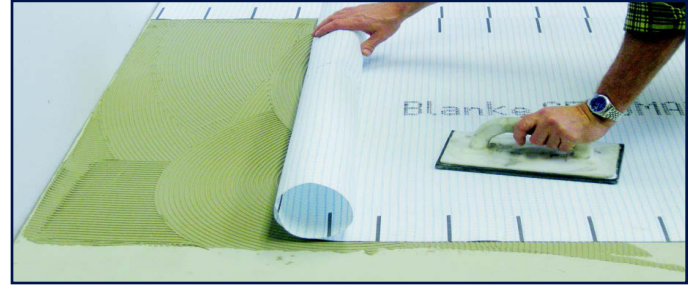
BLANKE

Blanke • SECUMAT

INSTALLATION INSTRUCTIONS



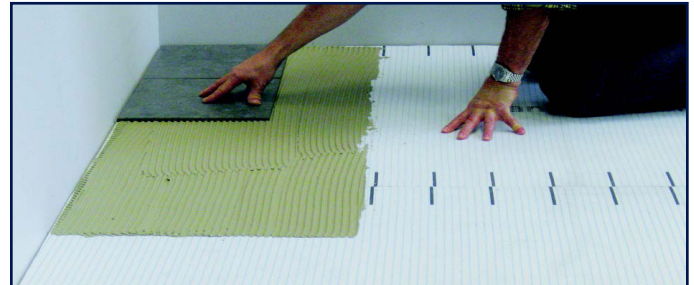
3. Using the flat side of the trowel, press the mat into the thinset ensuring that the mat is free of air pockets and crimps in the fabric. Start at one end and continue working in one direction to avoid air pockets.



4. Butt the edges of adjacent sections tightly together.



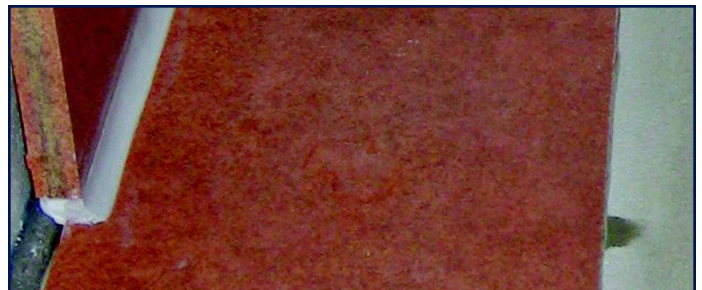
5. Cuts can be easily made using a knife or a scissors.



6. Allow the thinset to set-up until hard. Traffic on the BLANKE SECUMAT should be kept to a minimum while the thinset is curing. Apply latex modified thinset (mid-grade quality or higher) and install tile following the thinset manufacturer installation instructions and in accordance with industry practices in the same way as tile is in-stalled on backerboard and similar underlayments.



7. Grout the tile after allowing the curing period as recommended by the grout manufacturer. Follow the manufacturer installation instructions and industry practices when grouting.



8. The BLANKE SECUMAT does not eliminate the need for movement joints in the tile surface and at the perimeter of the installation (see EJ171-07). The BLANKE FLOOREX and BLANKE CORNEX are prefabricated movement joints specifically designed for this purpose.