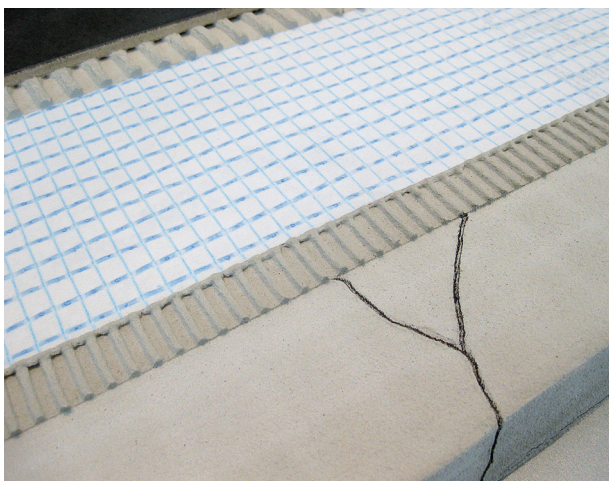




## DATA SHEET

### BLANKE SECUMAT

BLANKE SECUMAT is a tear-proof rolled uncoupling underlayment that provides a secure bonding surface for ceramic tile and natural stone installations on both interior floors and walls.



#### Characteristics

- > Provides uncoupling crack isolation properties
- > Very low installation height
- > Easy to cut
- > Fast installation time

#### Description

BLANKE SECUMAT minimizes tile assembly thickness and provides crack isolation protection that helps prevent damage to the tile covering caused by lateral substrate movement. This lightweight, easy-to-install underlayment features low elevation and requires less thinset than other rolled uncoupling products.

#### Application area

Substrates must be clean, load bearing and without height offset. Calcium sulphate, mastic asphalt, cement screeds, concrete, old tile and natural stone coverings, glued parquet floors, wood substrates, mixed substrates, cement and lime cement plasters, gypsum plasters, plasterboard as well as heated constructions are suitable substrates. The subsurface must be dry and free of layers that reduce adhesion. Leveling to achieve an even surface has to be done prior to installing BLANKE SECUMAT.

#### Installation

Apply loosely mixed modified thinset mortar to the substrate using a 5/16" v-notched trowel. Apply BLANKE SECUMAT to the substrate and embed mat with float or roller. Adjacent rows of SECUMAT are butted end to end. Work thin set mortar into the surface of BLANKE SECUMAT and set tile.

#### Technical Data

Width:	3.28 ft.
Length:	164 ft. / 49.2 ft.
Thickness:	1/25"
Color:	white and blue
Tear strength:	468 N
Weight:	41 lbs per roll (large) 12.5 lbs per roll (small)

**Attention:** The proper and successful application of our products is outside our control. Therefore, we can only guarantee the quality of our products within the scope of our terms and conditions. However, we cannot be held responsible for the successful application of our product. This data sheet shall render all previous technical information about this product invalid. We reserve the right to changes based on technical advancements. Information that exceed the scope of this bulletin and is provided by our staff, requires our written confirmation

#### Blanke Corporation

5901 Goshen Springs Road, STE A1  
Norcross, GA 30071

P (770) 936-9211  
F (770) 936-9511

E [tech@blankecorp.com](mailto:tech@blankecorp.com)  
I [www.blankecorp.com](http://www.blankecorp.com)

Edited: KS 11/05/21