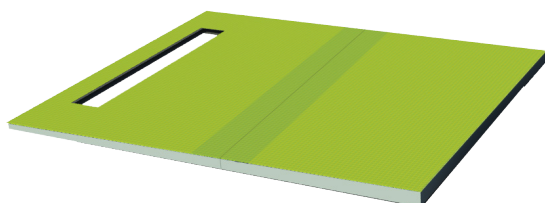


## SYSTEM DESCRIPTION

Showertec Linear is a range of linear channels, 100% made in Italy, for floor-level, barrier-free showers. The channel is made of three elements: **Body** (channel body), **Cover** (removable and adjustable grids), and **Frame** (optional). This feature boosts aesthetic combinations, as Cover and Frame are two separate elements, which can be combined. To complete the system, you'll find the Tray that is pre-sloped (2% slope), available in several sizes. Ready to be tiled.

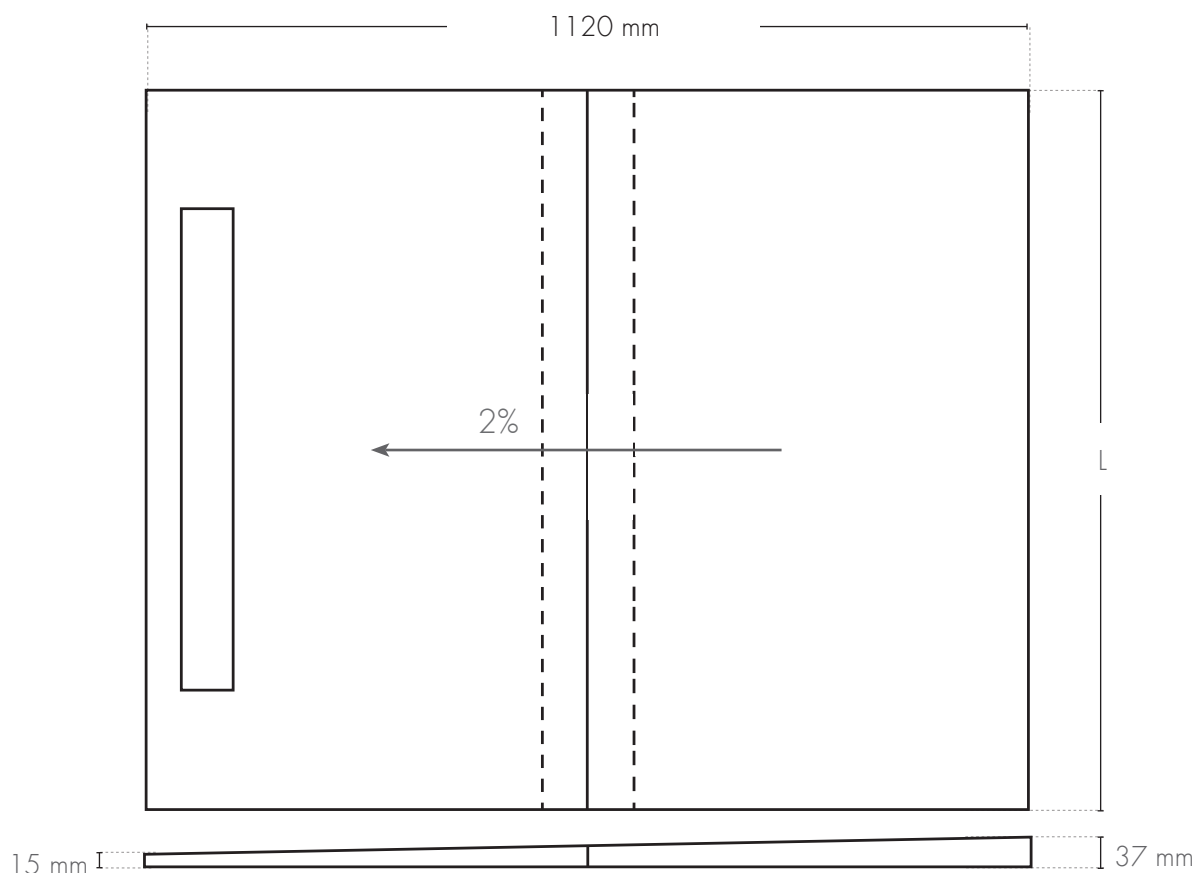
## SHOWERTEC LINEAR - STL-TRAY

### PRODUCT DESCRIPTION



**STL-TRAY** is a pre-sloped shower tray for the channels in the Showertec Linear STL channel series. It is made of waterproof material and coated with a layer of embossed fiber-cement which increases resistance and allows a tight grip of tile glues. **STL-TRAY** is available in two widths (91 cm / 132 cm) and can be completed with extensions (see **STL-EXT**) and ramps (see **STL-RAMP**); the version with an increased thickness of 53 mm with raised panels (see **STL-TRAY-R**) is also available.

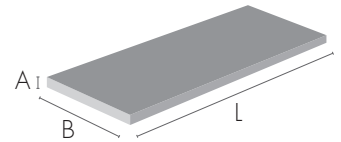
### TECHNICAL DRAWINGS STL-TRAY



L = Available widths: 910 mm / 1320 mm

STL-TRAY CODE

Article	Length (mm)	Description	pc	Pkg AxBxL (mm)
STL-TRAY91/112	910x1120	Fiber-reinforced cementitious <b>bonding surface</b>	1 pc	70x600x954
STL-TRAY132/112	1320 x 1120	Fiber-reinforced cementitious <b>bonding surface</b>	1 pc	70x600x1360



TECHNICAL FEATURES

Thermal conductivity (for XPS foam):  $0.04 \text{ m} / 0.035 \text{ W} / \text{mK} = 1.143 \text{ m}^2\text{K} / \text{W}$ ,

Resistance to low/high temperatures:  $-20^\circ\text{C} / +80^\circ\text{C}$  ( $-4^\circ\text{F} / 176^\circ\text{F}$ )

Waterproof: ASTM E331

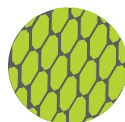
Can be cut on size

Extensible with the accessory Extension

TRAYS AND ACCESSORIES FEATURES AND ADVANTAGES



The **Trays** are waterproof and a fully-fledged shield against any infiltration.



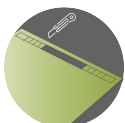
Fiber-reinforced cementitious layer makes the **Trays** more resistant, durable and improves the grip of thin-set.



The **Trays** are waterproof and a fully-fledged shield against any infiltration.



Wide range of accessories for more versatility. **Raised panels, extensions** and **ramps** are also available.



**Pre-cut indications** marked on Trays, ideal to adapt the drain system hole to the width of the channel.

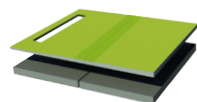
OTHER COMPONENTS

ACCESSORIES for TRAY



EXTENSION

- Tray extension



RAISER PANEL

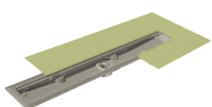
- Raised panels compatible with trays and extensions



RAMP

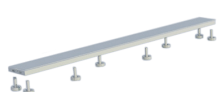
- Sloped ramp for renovations

BODY, COVER and FRAME



BODY

- Horizontal drain and siphon  
- Vertical drain



COVER

- Tileable grid  
- Invisible grid  
- 16 finishes



FRAME

- Wall frame  
- 13 finishes in Steel and Alu+

Profilitec S.p.A.  
Via Scotte, 3 - 36033 Isola Vicentina (Vicenza), ITALY  
Tel: +39 0444 268311  
e-mail: profilitec@profilitec.com (ITA)

Profilitec Corp.  
472 Meeting Street, Suite C, No. 301 -  
Charleston, SC 29403, USA  
Ph: +1 855 290 9591  
e-mail: customerservice@profilitec.com

 **profilitec**  
positive profile